



9,836 SF

OFFICE FOR SUBLEASE

MILLENNIUM PLACE EAST

25111 COUNTRY
CLUB BLVD
NORTH OLMSTED, OH

CBRE

PROPERTY OVERVIEW

Millennium Place East, at 25111 Country Club Boulevard in North Olmsted, Ohio, is an iconic office property offering prime commercial opportunity.



Available 9,836 RSF



Lease Expires April 30, 2028



Suite Number 25115



\$16.00 PRSF



BUILDING HIGHLIGHTS



Renovated Lobby



Outdoor Patio Seating



Abundant Parking



24-Hour Fitness Center



Proximity to I-90

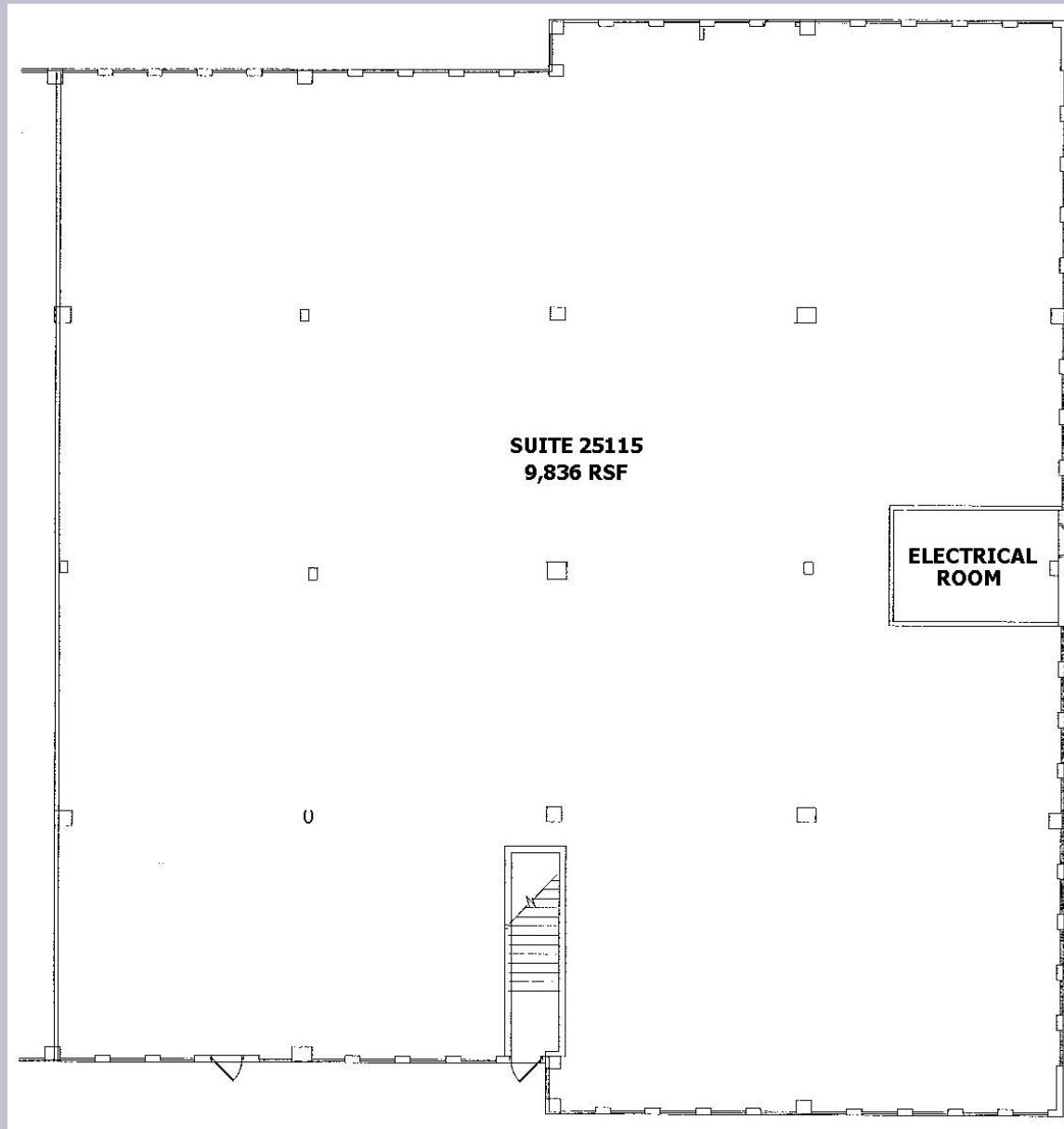


Building 69,230 RSF

PROPERTY PHOTOS



FLOOR PLAN

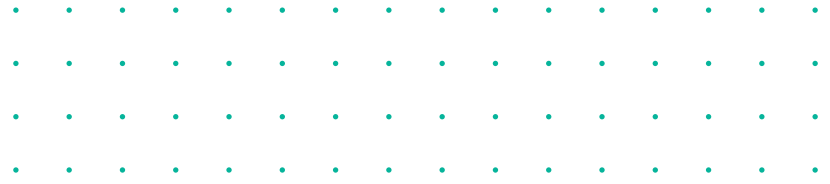


DEMOGRAPHICS

DEMOGRAPHIC COMPREHENSIVE	1 MILE	3 MILES	5 MILES
Population			
2025 Population	7,924	62,366	171,902
2030 Population - Projection	7,788	61,484	170,061
2025 Daytime Population	11,736	62,660	179,22
Generations			
Generation Alpha	8.7%	9.0%	8.8%
Generation Z	18.9%	18.1%	19.5%
Millennials	26.0%	22.2%	22.0%
Generation X	18.0%	19.1%	19.6%
Baby Boomers	23.0%	24.8%	23.8%
Greatest Generations	5.4%	6.9%	6.4%
Household Income			
Average Household Income	\$93,646	\$124,818	\$125,844
Median Household Income	\$68,767	\$93,194	\$91,063
Housing Value			
Median Home Price	\$215,140	\$245,372	\$260,032
Average Home Price	\$228,941	\$277,015	\$304,203



2 5 1 1 1
C O U N T R Y
C L U B B L V D



Maddie Levand
Associate
+1 216 496 0717
maddie.levand@cbre.com

© 2026 CBRE, Inc. All rights reserved. This information has been obtained from sources believed reliable but has not been verified for accuracy or completeness. You should conduct a careful, independent investigation of the property and verify all information. Any reliance on this information is solely at your own risk. CBRE and the CBRE logo are service marks of CBRE, Inc. All other marks displayed on this document are the property of their respective owners, and the use of such logos does not imply any affiliation with or endorsement of CBRE. Photos herein are the property of their respective owners. Use of these images without the express written consent of the owner is prohibited.

