

FOR SALE
LONGS POINT
Woodland Park, CO 80863



Property Information

Sundance at Shining Mountain Filing 4

Site	1.42 Acres (11 Lots Available)
Secondary Type	Residential
Proposed Use	Single Family Development
Existing Utilities	Approved Plan
Topography	Sloping
Zoning	A-1_PUD

SALE: \$950,000.00

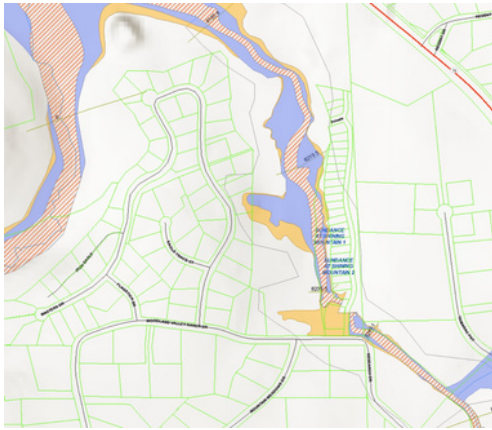


For more information:
COLE UNDERWOOD
(719)200-4610
cole@coleunderwood.com

FOR SALE

LONGS POINT

Woodland Park, CO 80863



Location

Off of Research Drive & Minutes from HWY 67

Aerial & Demographics

- Shining Mountain Golf Course
- Trout Creek
- Mule Creek
- Lovell Gulch Trailhead

This listing is for the remaining lots with Sundance at Shining Mountain Filing 4. There are 11 remaining lots, 8 of which are ready for permit and building of current approved plans. The other 3 lots still need to go through the platting process but all is ready to file and finish. Lots are easy to build on with few requiring tree mitigation.



For more information:
COLE UNDERWOOD
(719)200-4610
cole@coleunderwood.com