

33775 FORD ROAD  
GARDEN CITY, MICHIGAN

RETAIL FOR SALE  
1,500 Square Feet Available

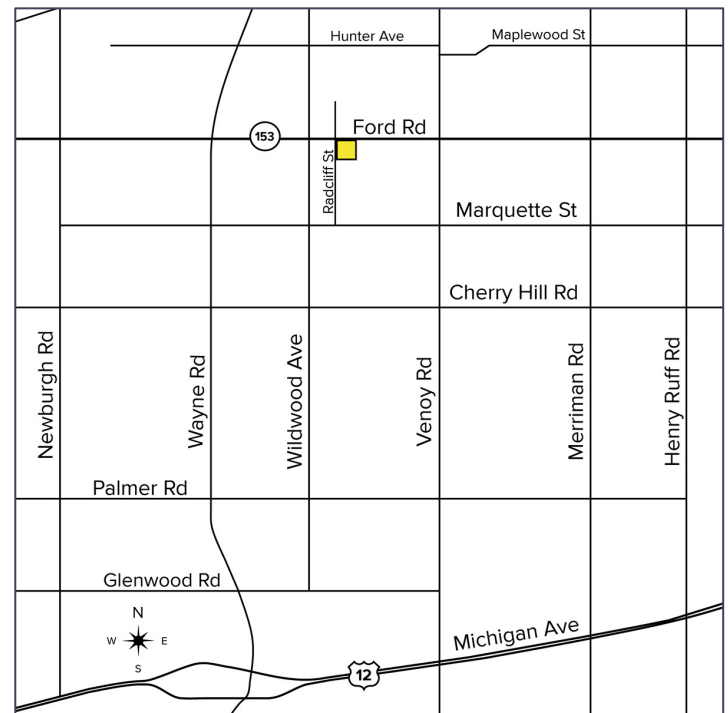


**SIGNATURE  
ASSOCIATES**  
KNOW SIGNATURE | KNOW RESULTS



## PROPERTY FEATURES

- 1,500 square feet available
- Excellent opportunity for development of this 0.42 acre corner-site on high traffic Ford Road next to McDonald's
- 20 parking spaces
- Building and pylon signage
- Zoned C-3
- Sale Price: \$440,000 (\$293.33/sq. ft.)



For more information, please contact:

**JUSTIN GAFFREY**  
(248) 799 3143  
jgaffrey@signatureassociates.com

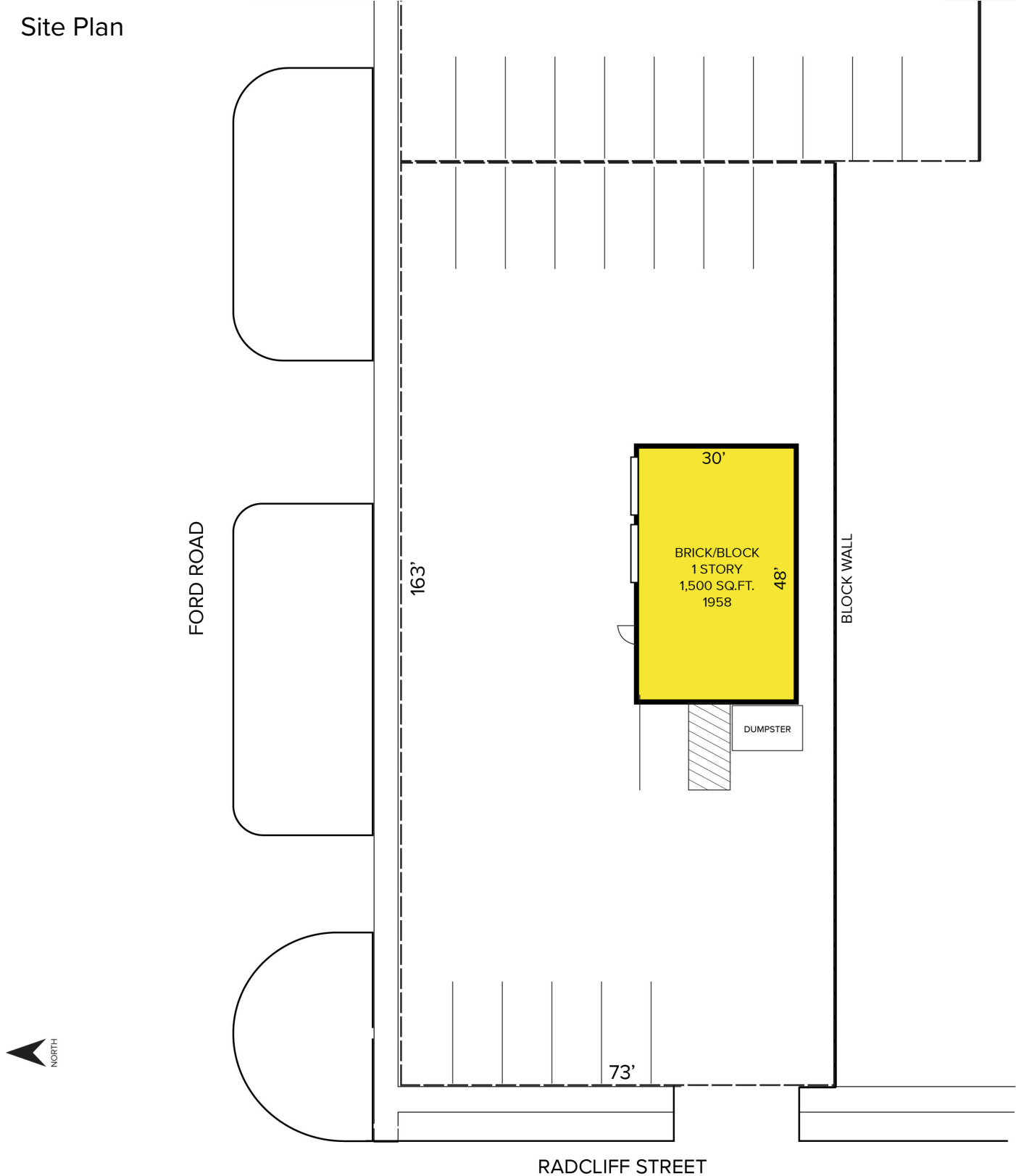
**SIGNATURE ASSOCIATES**  
One Towne Square, Suite 1200  
Southfield, MI 48076  
www.signatureassociates.com

# 33775 Ford Road – Garden City, Michigan

Retail For Sale

1,500  
Square Feet  
AVAILABLE

## Site Plan



For more information, please contact:  
**JUSTIN GAFFREY**  
(248) 799 3143  
jgaffrey@signatureassociates.com

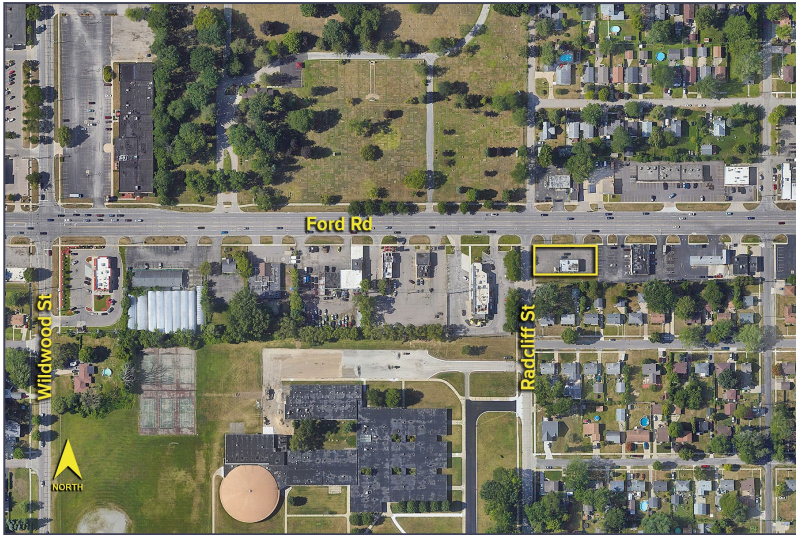
**SIGNATURE ASSOCIATES**  
One Towne Square, Suite 1200  
Southfield, MI 48076  
www.signatureassociates.com

Information is subject to verification and no liability for errors or omissions is assumed. Price is subject to change and listing withdrawal.

# 33775 Ford Road – Garden City, Michigan

## Retail For Sale

1,500  
Square Feet  
AVAILABLE

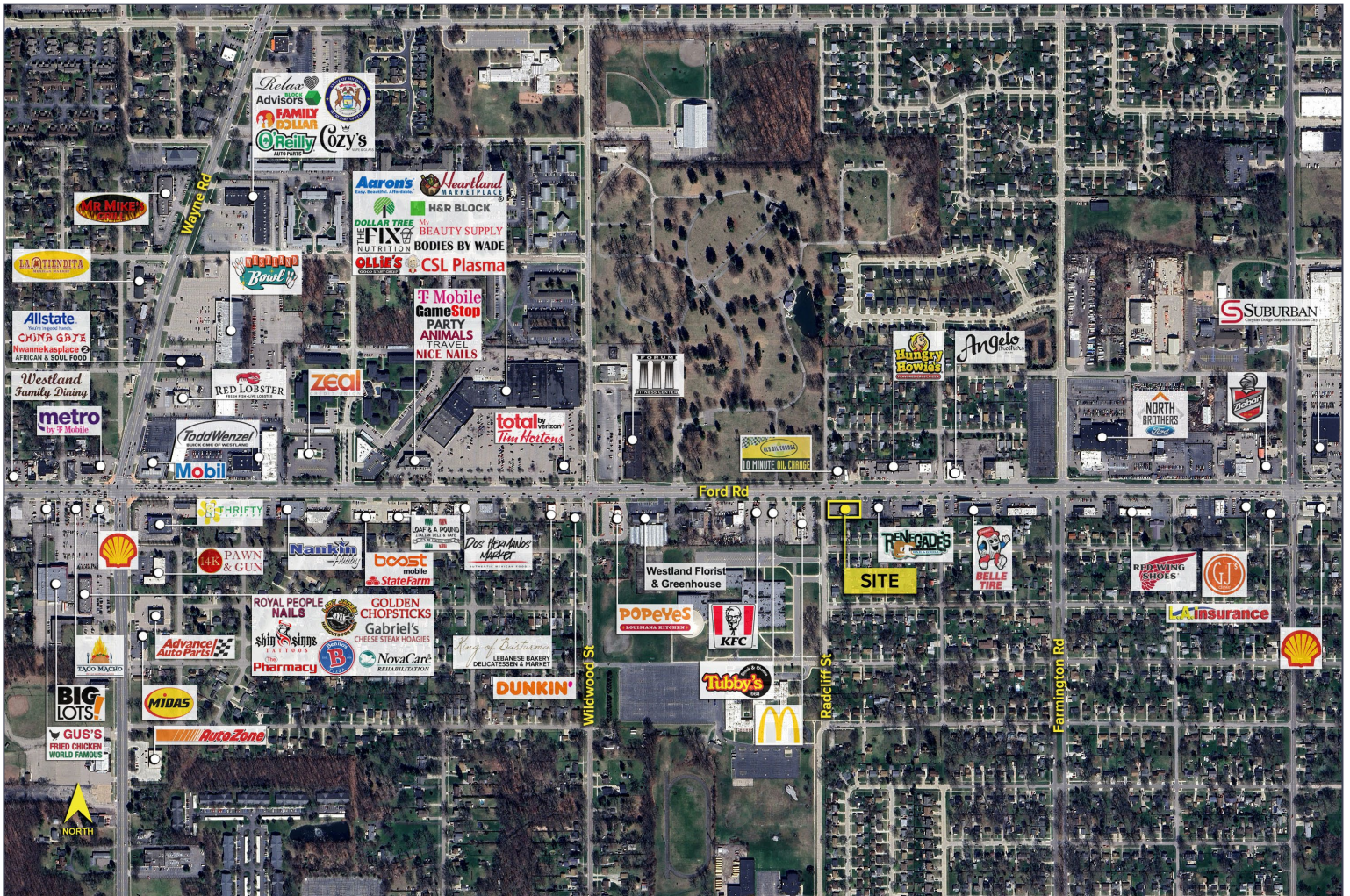


### DEMOGRAPHICS

|        | POPULATION | MED. HH INCOME |
|--------|------------|----------------|
| 1 MILE | 12,659     | \$59,312       |
| 3 MILE | 115,594    | \$64,137       |
| 5 MILE | 267,369    | \$69,383       |

### TRAFFIC COUNTS (TWO-WAY)

|        |                            |
|--------|----------------------------|
| 6,454  | Wildwood St. N of Ford Rd. |
| 6,300  | Wildwood St. W of Ford Rd. |
| 41,421 | Ford Rd. E of Wildwood St. |
| 41,344 | Ford Rd. W of Wildwood St. |



For more information, please contact:

**JUSTIN GAFFREY**  
(248) 799 3143  
jgaffrey@signatureassociates.com

**SIGNATURE ASSOCIATES**  
One Towne Square, Suite 1200  
Southfield, MI 48076  
www.signatureassociates.com