

710

N. MARIPOSA

ST. Burbank,
CA



±5,850 SF INDUSTRIAL
BUILDING FOR LEASE

CBRE

THE HIGHLIGHTS



Excellent Location Near
Burbank Blvd. & Victory Blvd.



Very Clean,
Like New Space



Fully
Sprinklered



HVAC
in the Warehouse



Large
Skylights



1 Ground Level Door
at 12'X16'



18' Minimum
Clearance Height



11 Parking
Stalls



Spacious Rear Warehouse Area
with Skylights



Virtually Staged
Break Room Area



Bright Second-Story Offices Offering
Pleasant Views and Ample Natural Light

PROPERTY DETAILS

RENTABLE SF:
±5,850 SF

LAND SF:
±9,413 SF

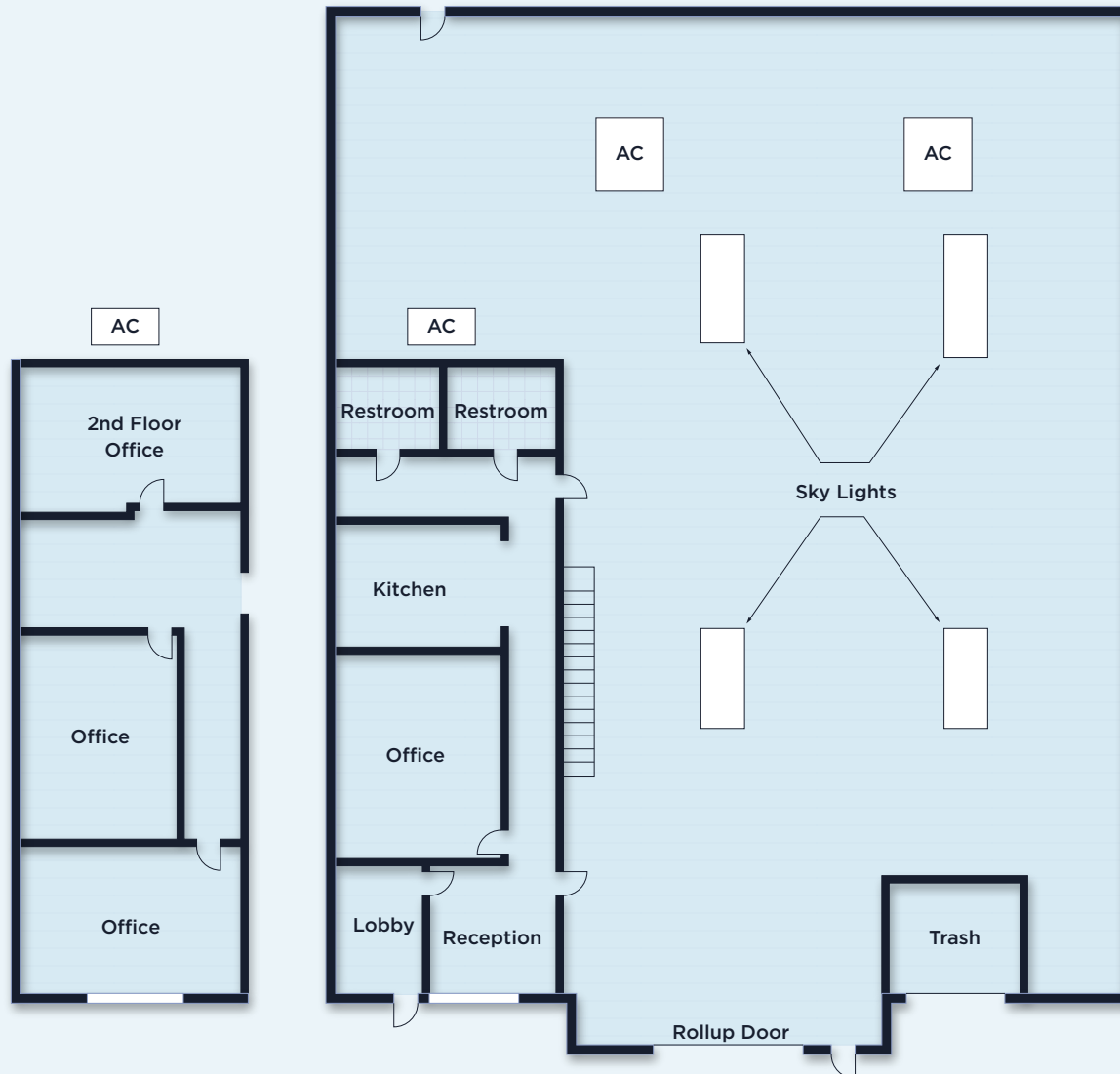
YEAR BUILT:
1997

ZONING:
M2

OFFICE SF:
±1,800 SF
(with 900 SF Mezzanine)

POWER:
**400 Amps, 480 Volt,
3 Phase 4 Wire**

CLEARANCE
HEIGHT:
18' Clearance



Rent **\$2.25 NNN**
with **\$0.23 OpEx**

THE LOCATION



Van Nuys Airport

SEIZE THE ADVANTAGE: Free Standing Industrial Building Located Near the Hollywood Burbank Airport



Hollywood Burbank Airport



710
N. MARIPOSA
ST. Burbank, CA



Hollywood Burbank Airport

10-Min Drive to Hollywood Burbank Airport

710
N. MARIPOSA ST.



LAX

Los Angeles International Airport

710

N. MARIPOSA

ST. Burbank,
CA



FOR MORE INFORMATION, PLEASE CONTACT:

GREGORY BARSAMIAN

Senior Vice President

Lic. 00873206

+1 818 406 3658

gregory.barsamian@cbre.com

ABRAHAM KIM

Senior Associate

Lic. 02077431

+1 213 613 3347

abraham.kim@cbre.com

© 2024 CBRE, Inc. All rights reserved. This information has been obtained from sources believed reliable, but has not been verified for accuracy or completeness. You should conduct a careful, independent investigation of the property and verify all information. Any reliance on this information is solely at your own risk. CBRE and the CBRE logo are service marks of CBRE, Inc. All other marks displayed on this document are the property of their respective owners. Photos herein are the property of their respective owners and use of these images without the express written consent of the owner is prohibited.

CBRE