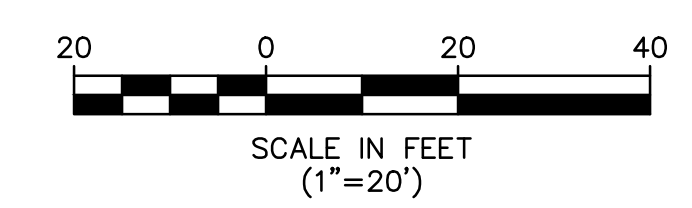


**KEY MAP**  
1" = 200'+-

**NOTE:**  
THIS PLAN SHALL BE USED FOR  
SOIL EROSION & SEDIMENT CONTROL  
MEASURES - ONLY !

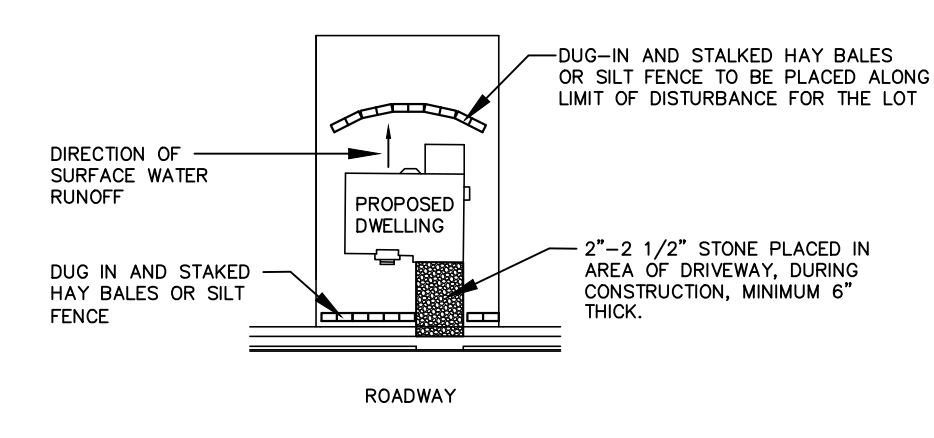
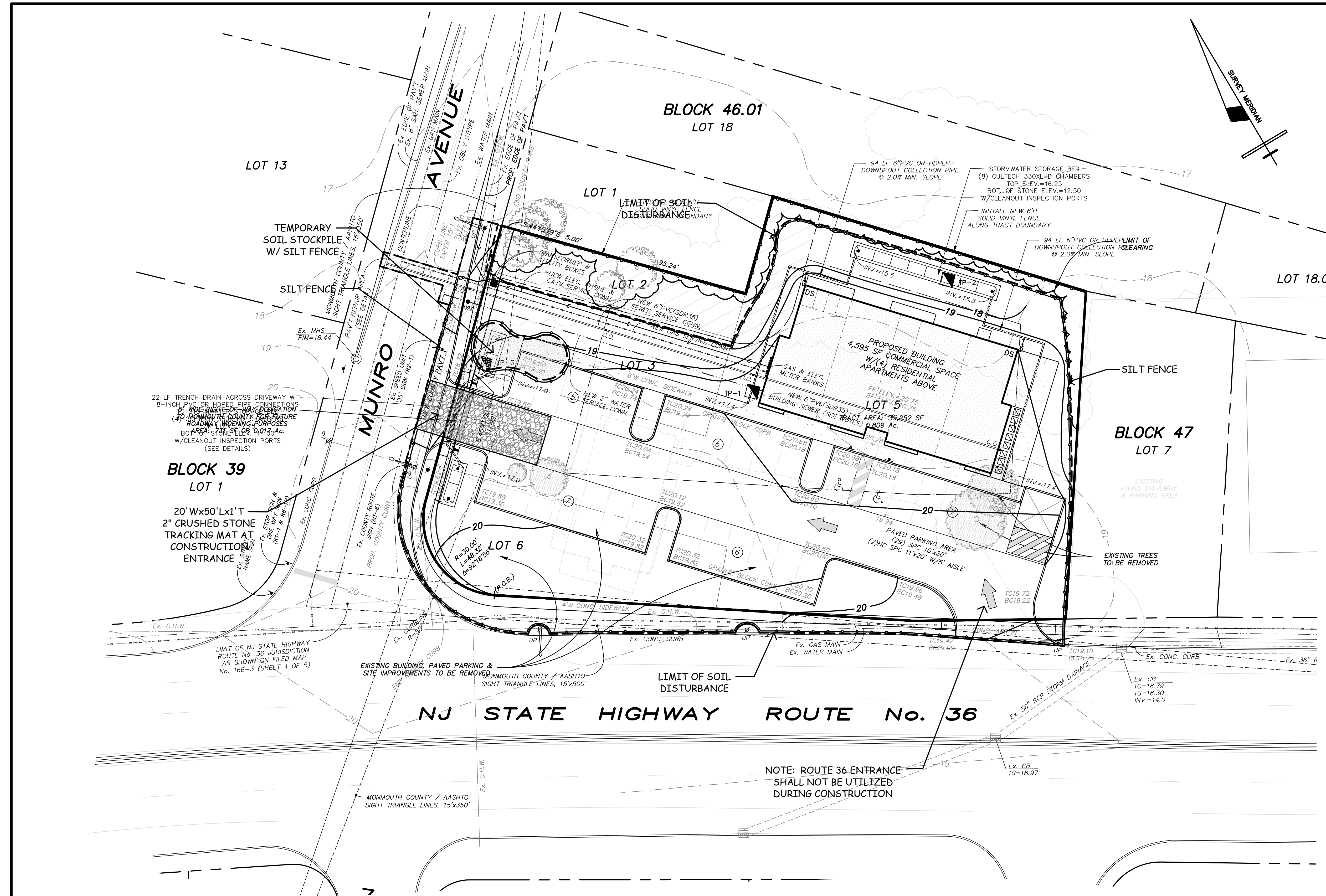
**OWNER / APPLICANT:**  
MICHAEL MARGARELLA  
623 COOPER ROAD  
ATLANTIC HIGHLANDS, NJ 07716



No.	DATE	REVISION	BY
6	9-01-24	REV. PER TOWNSHIP 7-31-24 RESOLUTION COMPLIANCE REVIEW	ARS
5	6-01-24	REV. FOR TOWNSHIP LAND USE BOARD - RESOLUTION COMPLIANCE	ARS
4	12-01-23	REV. FOR TOWNSHIP LAND USE BOARD - RESOLUTION COMPLIANCE	ARS
3	7-22-22	REV. PER TOWNSHIP ENGINEER'S 6-30-21 COMPLETENESS REVIEW	ARS
2	10-01-21	REV. PER TOWNSHIP ENGINEER'S 6-30-21 COMPLETENESS REVIEW	ARS
1	8-05-21	REV. PER FSCD 5-24-21 PROJECT REVIEW	ARS

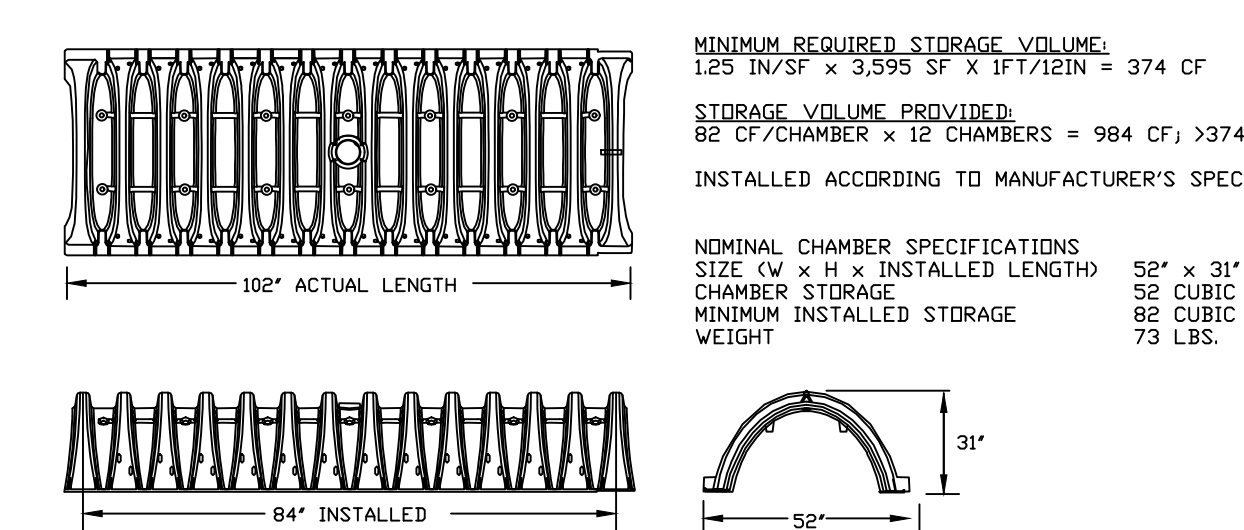
**EASTERN CIVIL ENGINEERING, LLC**  
CIVIL ENGINEERING - SURVEYING & MAPPING - LAND USE PLANNING - SITE DESIGN  
31 GRAND TOUR, HIGHLANDS NJ 07732 PHONE: 732.872.7736

SOIL EROSION & SEDIMENT CONTROL PLAN FOR		PROJECT NO.:	
<b>MICHAEL MARGARELLA</b>		2001813	
BLOCK 47 LOTS 2, 3, 5 & 6		DESIGN BY:	
TAX MAP SHEET No. 15		ARS	
HAZLET TOWNSHIP, MONMOUTH COUNTY, NEW JERSEY		DATE:	
		3-01-21	
		SCALE:	
		1" = 30'	
		SHEET NO.:	
		7 of 9	

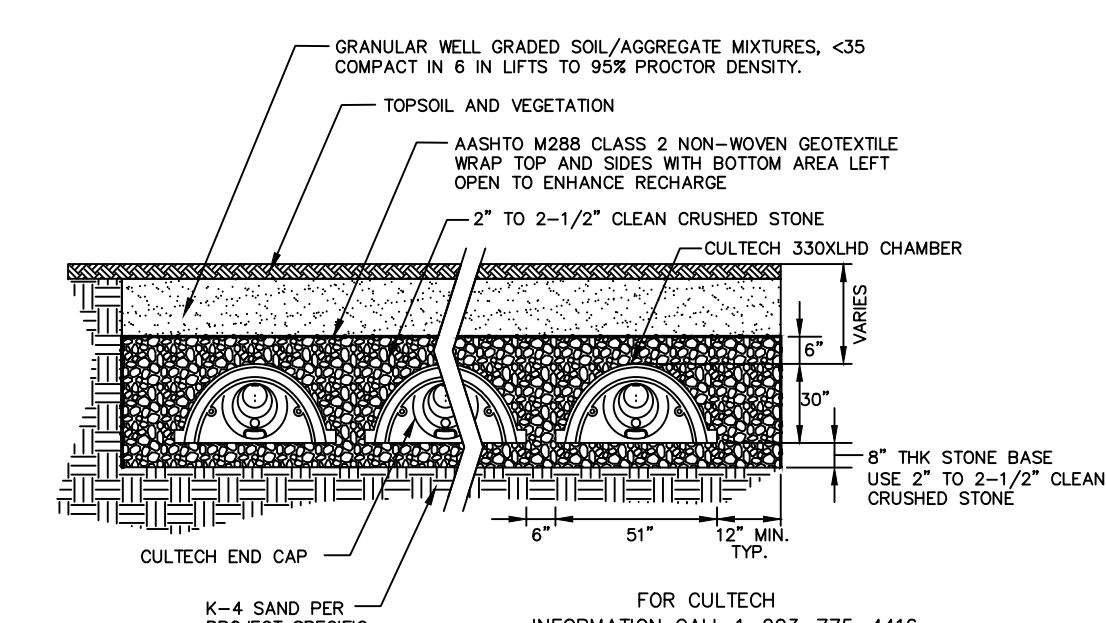


**TYPICAL LOT DETAIL**  
N.T.S.

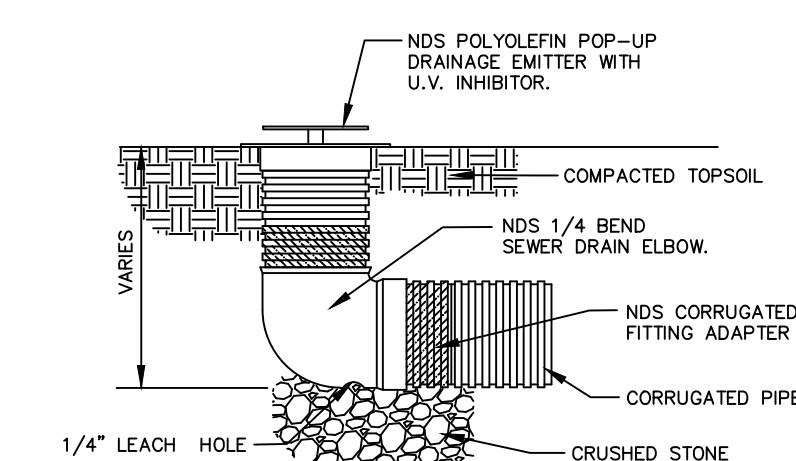
**NOTE:**  
RESPONSIBILITY FOR PLACEMENT AND MAINTENANCE OF SOIL EROSION MEASURES ON ANY GIVEN LOT BELONGS TO THE PERSON(S) DOING THE DISTURBANCE OR CONSTRUCTION. SEE S&S/C PLAN VIEW FOR ADDITIONAL CONTROL MEASURES.



**CULTECH RECHARGER 330XLHD STORMWATER CHAMBER**  
N.T.S.



**CULTECH 330XLHD CHAMBER SYSTEM TYPICAL CROSS SECTION DETAIL**  
N.T.S.



**TYPICAL POP-UP DRAINAGE EMITTER**  
N.T.S.