

±84 ACRES FOR SALE | CASA GRANDE AZ

SWC SELMA HWY & TOLTEC BUTTES RD

LOCATION	This property is located at the southwest corner of Selma Highway and Toltec Buttes Road in Casa Grande, Arizona
SIZE	±84.4 Acres
PRICE	Submit
PARCEL	402-05-0100
TAXES	\$3,984.54 (2024)
ZONING	UR (City of Casa Grande)
UTILITIES	Water: Arizona Water Company Power: Electrical District #2 Gas: Southwest Gas Corporation Irrigation: Central Arizona Irrigation District

CONTACT FOR MORE INFORMATION

Kirk P. McCarville, CCIM
kmccarville@landadvisors.com
520.251.0348

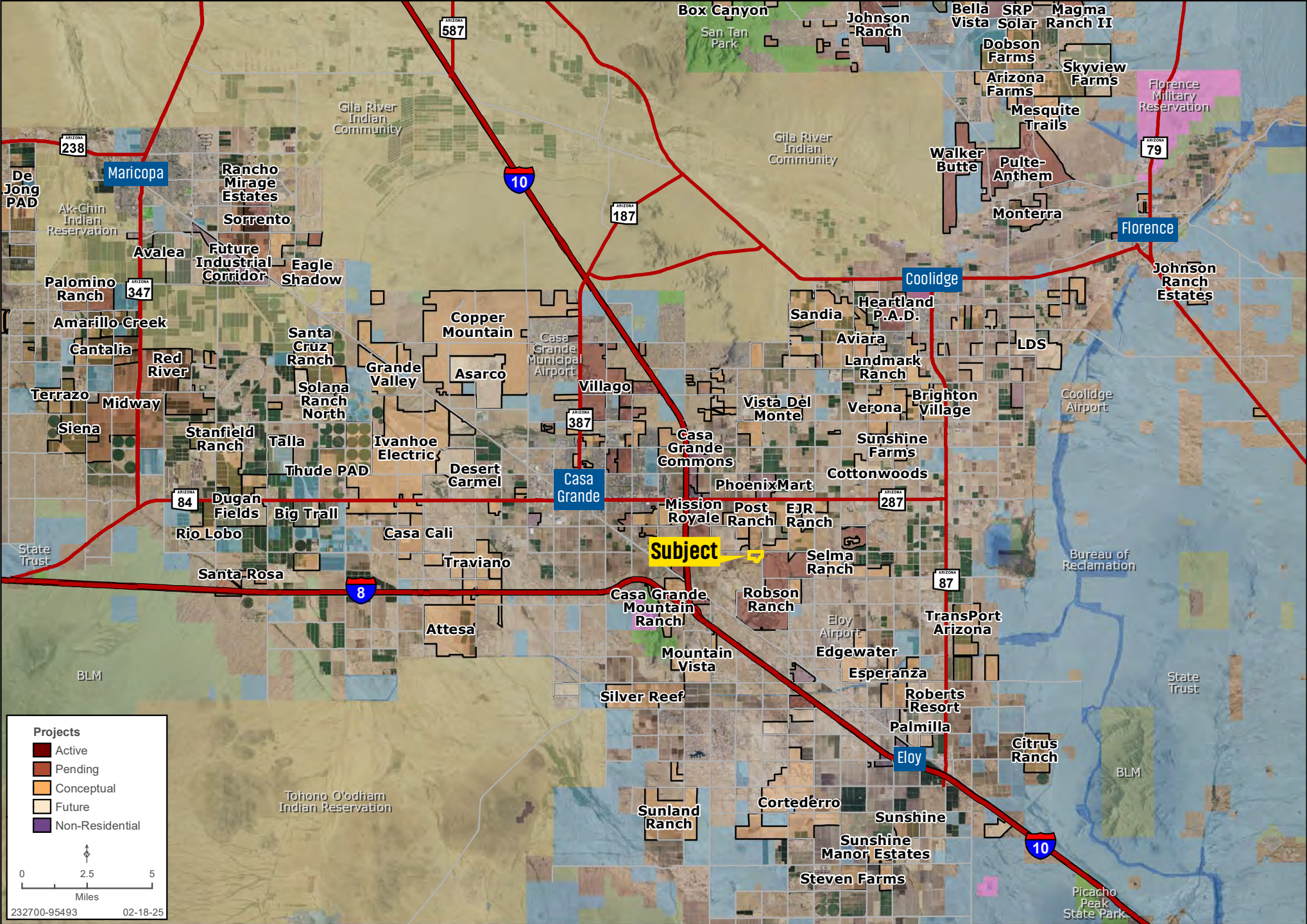
Trey Davis
tdavis@landadvisors.com
602.363.3901

 Land Advisors[®]
ORGANIZATION

520.251.0348 | LandAdvisors.com

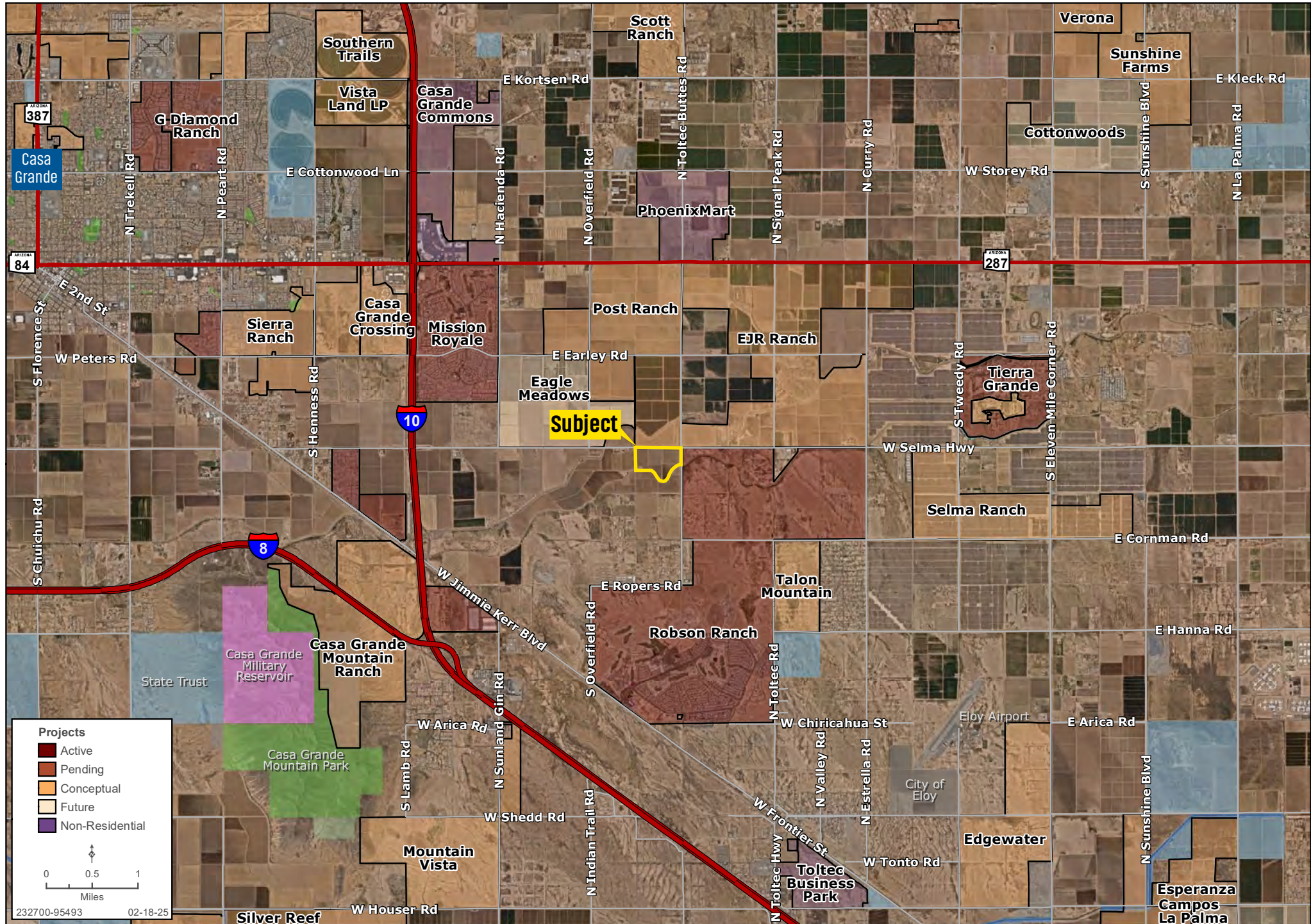
REGIONAL

Kirk P. McCarville, CCIM | Trey Davis | 520.251.0348 | landadvisors.com



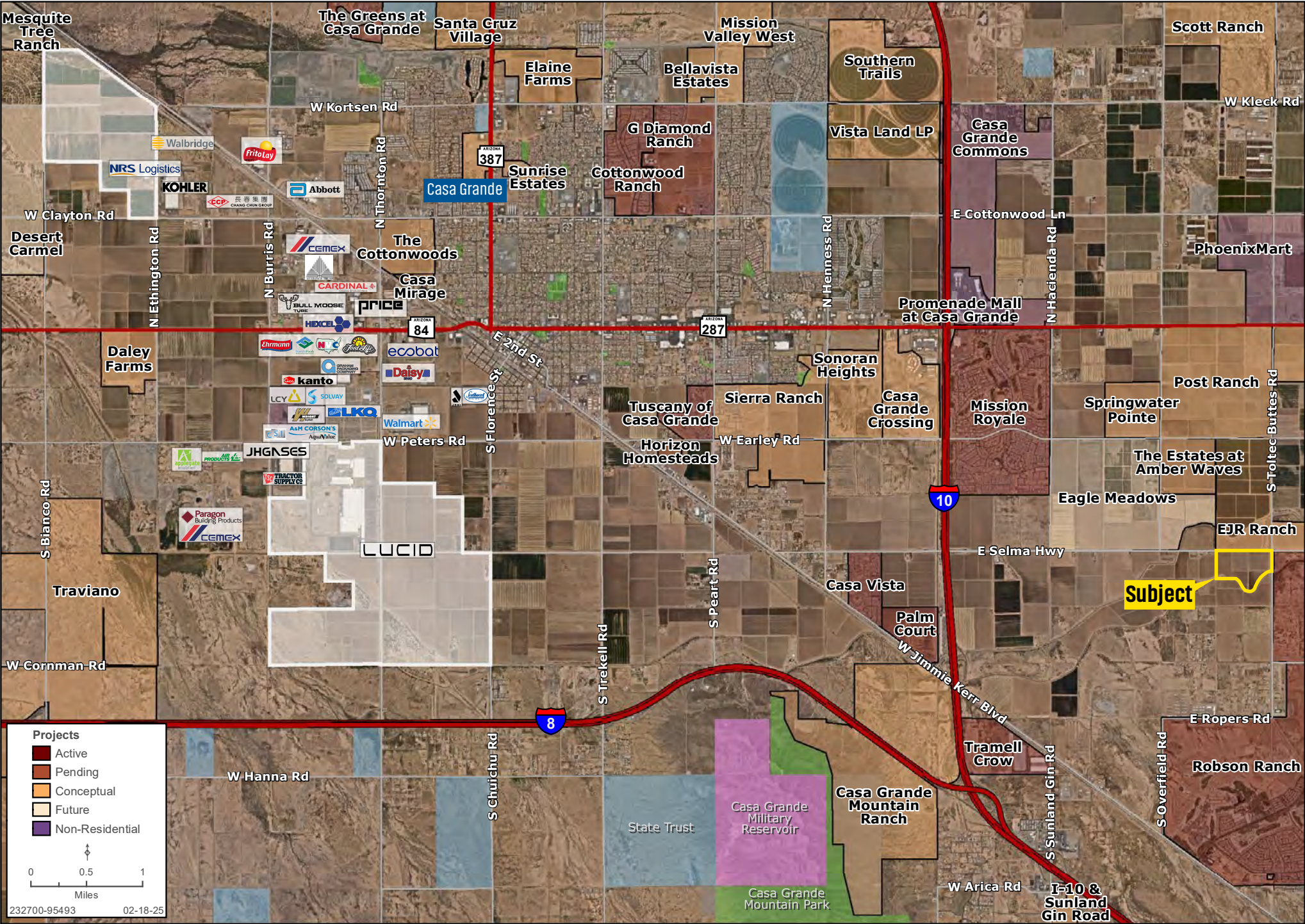
DEVELOPMENT

Kirk P. McCarville, CCIM | Trey Davis | 520.251.0348 | landadvisors.com



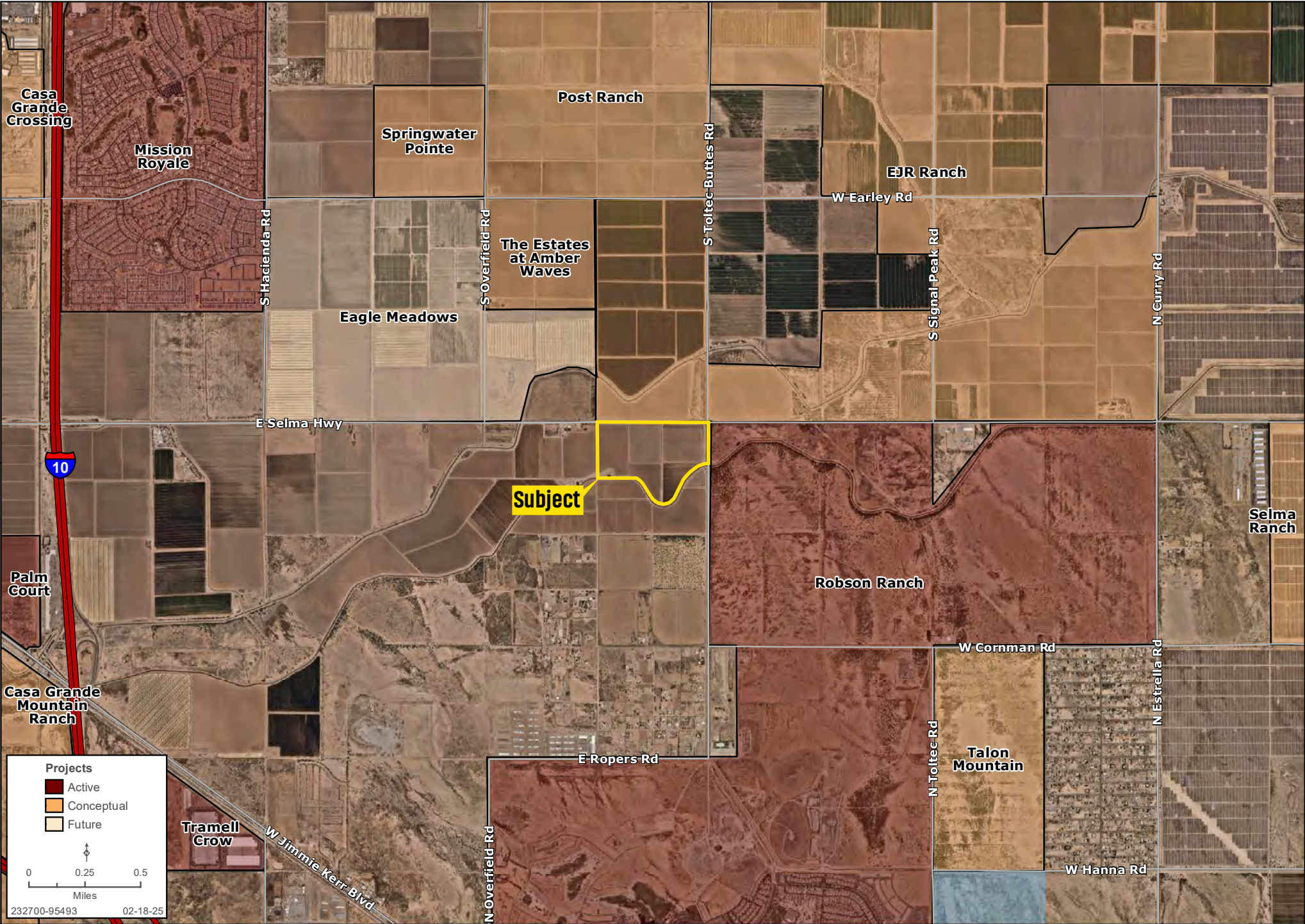
CORPORATE NEIGHBORS

Kirk P. McCarville, CCIM | Trey Davis | 520.251.0348 | landadvisors.com



AREA

Kirk P. McCarville, CCIM | Trey Davis | 520.251.0348 | landadvisors.com



DETAIL

Kirk P. McCarville, CCIM | Trey Davis | 520.251.0348 | landadvisors.com



PINAL COUNTY HIGHLIGHTS | [CLICK THE LINKS BELOW FOR MORE INFORMATION](#)



[New Jobs](#)

[Coming to](#)
[Pinal County](#)



[Labor](#)

[Report](#)



[Casa Grande](#)

[Incentive](#)
[Package](#)



[Pinal County](#)

[Incentive](#)
[Package](#)



[4Q24](#)

[Market](#)
[Insights](#)



[About](#)

[Land Advisors](#)
[Organization](#)

The information in this document and any attachments regarding any property has been obtained from sources believed reliable, but we have not verified it and we make no guarantee, warranty, or representation as to its accuracy or completeness, and we do not undertake to update or correct any of the information presented. Any projections, opinions, assumptions, or estimates ("forward-looking statements") used are, for example, only and do not represent the current or future performance of the property and actual results may differ materially from such forward-looking statement due to, without limitation, changes in: (i) the market, (ii) governmental legal, regulatory or permitted use changes, and (iii) other factors. You and your advisors should conduct a careful, independent investigation of the property to determine to your satisfaction the property's suitability for your needs. Any reliance on this information is at your own risk and is subject to change, prior sale or complete withdrawal. AZPinal232700 - 02.19.2025.



LandAdvisors.com