

20 UNIT MULTI-FAMILY CONDOS

Pomona, California

3 STORY MULTI-FAMILY RESIDENTIAL PROJECT WITH OPEN PARKING GARAGE

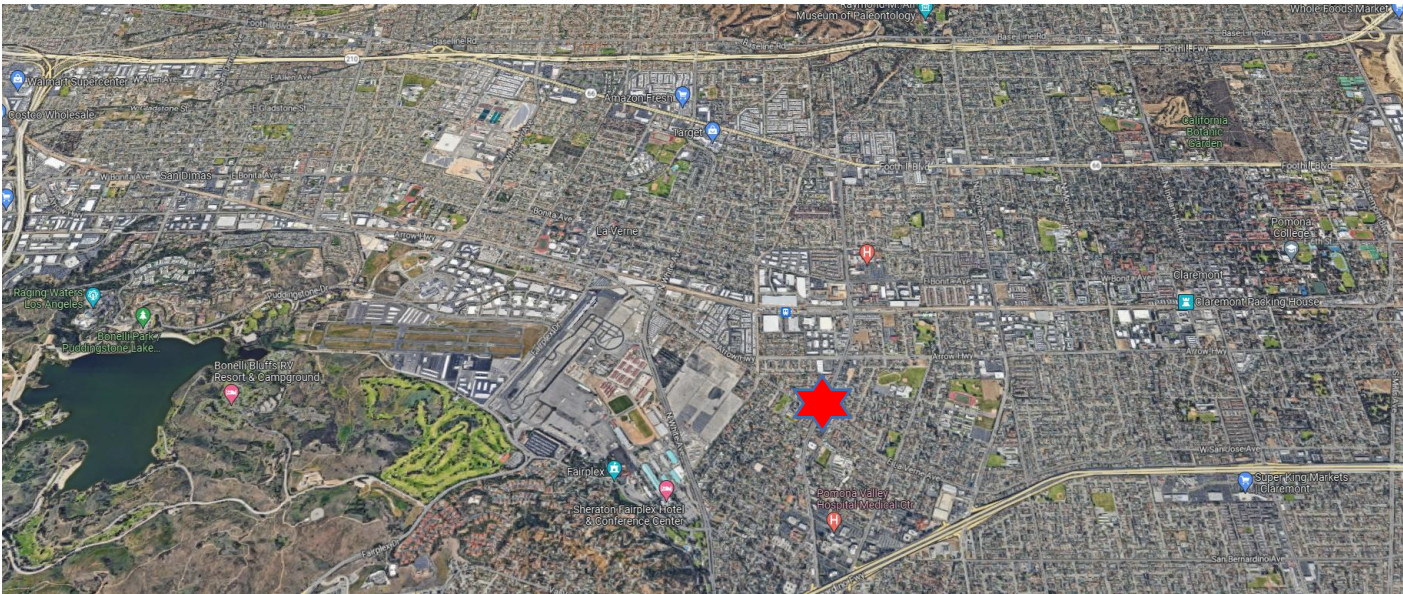




POMONA

7th largest city in Los Angeles County

On January 6, 1888, Pomona was incorporated as a City and became a charter City in 1911. Today, Pomona is the seventh largest city in Los Angeles County, with a population of over 151,000 residents. Pomona boasts a progressive economy, business opportunity, and a strong workforce with attractive shopping, recreational, and real estate offerings. The Pomona Valley had been a fruitful valley in the past and is now fruitful from the strength and efforts of its people. With a vision to promote harmonious diversity and economic prosperity, Pomona is a vibrant community with progressive citizens leading, testing the limits of progress, and striving to provide a high quality of life for all of Pomona.



NEIGHBORHOOD AROUND



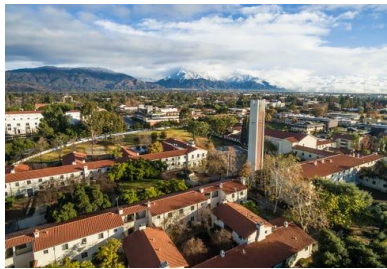
Fairplex



Mountain Meadows Golf



Pomona Valley Hospital



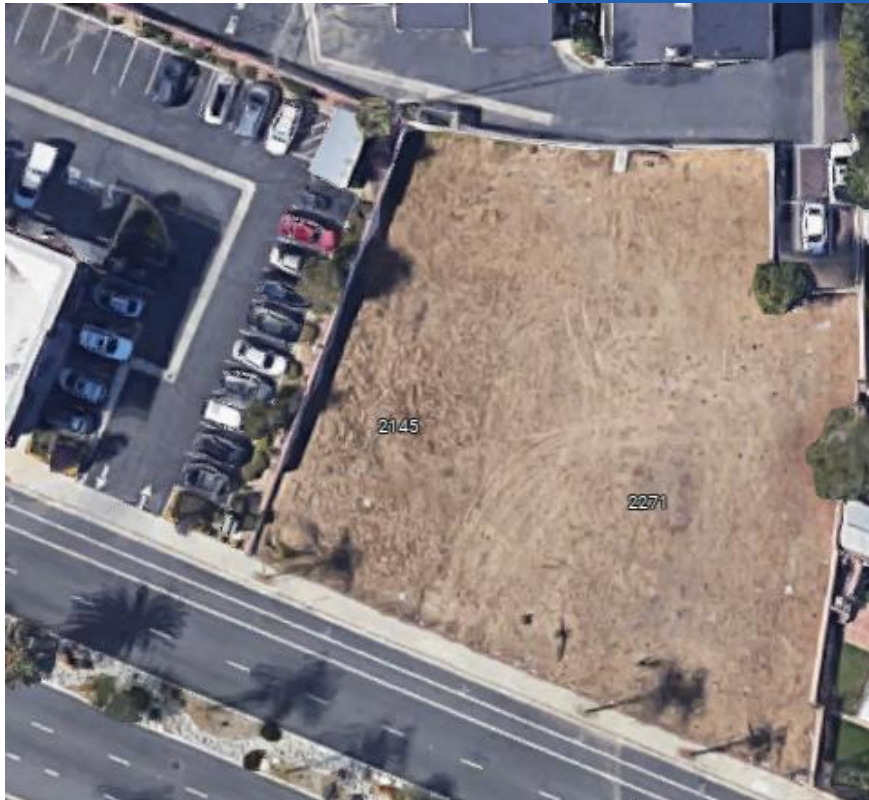
Pomona College



Casa Colina Hospital



university of La Verne



Key terms

TOTOAL BUILDING AREA: 35,003 S.F

TOTOAL LIVING AREA: 17,492 S.F

TOTOAL UNITS : 20 UNITS, INCLUDE 6 STUDIO, 2 1B1B, 12 2B2B

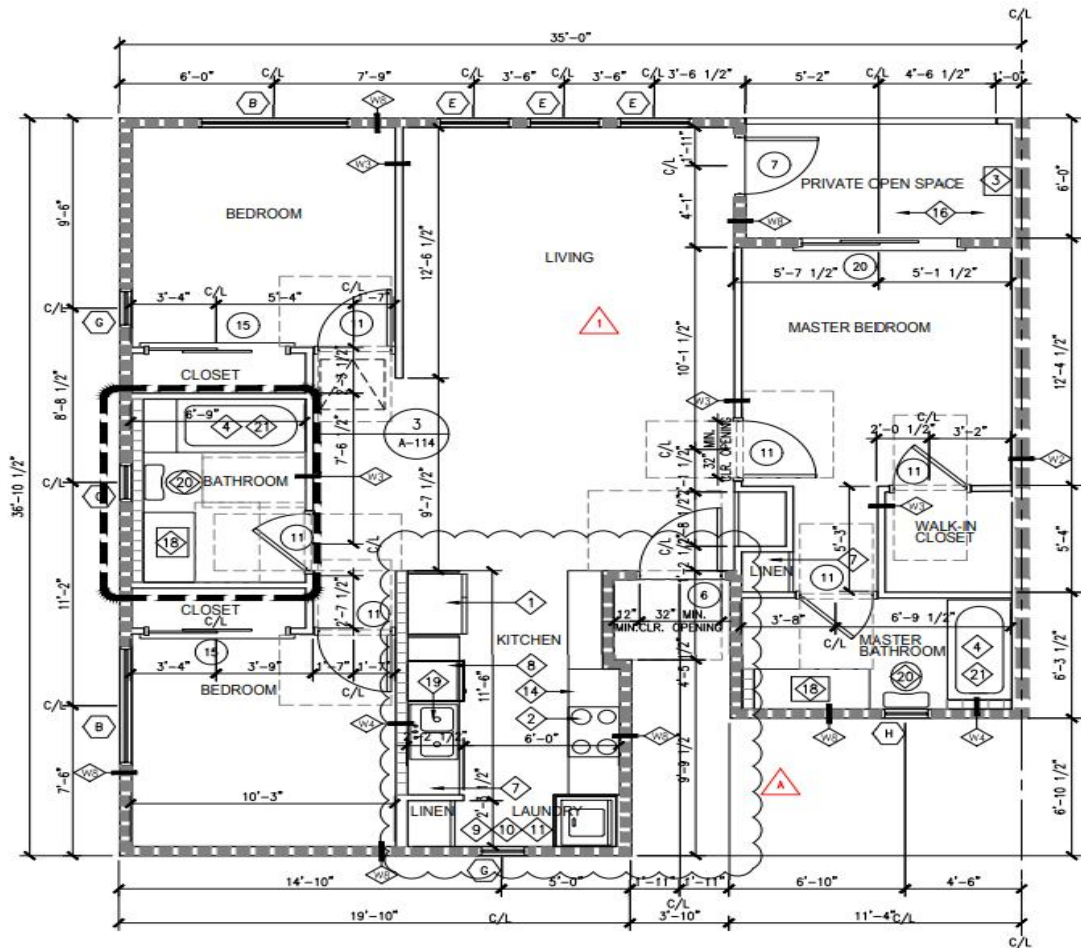
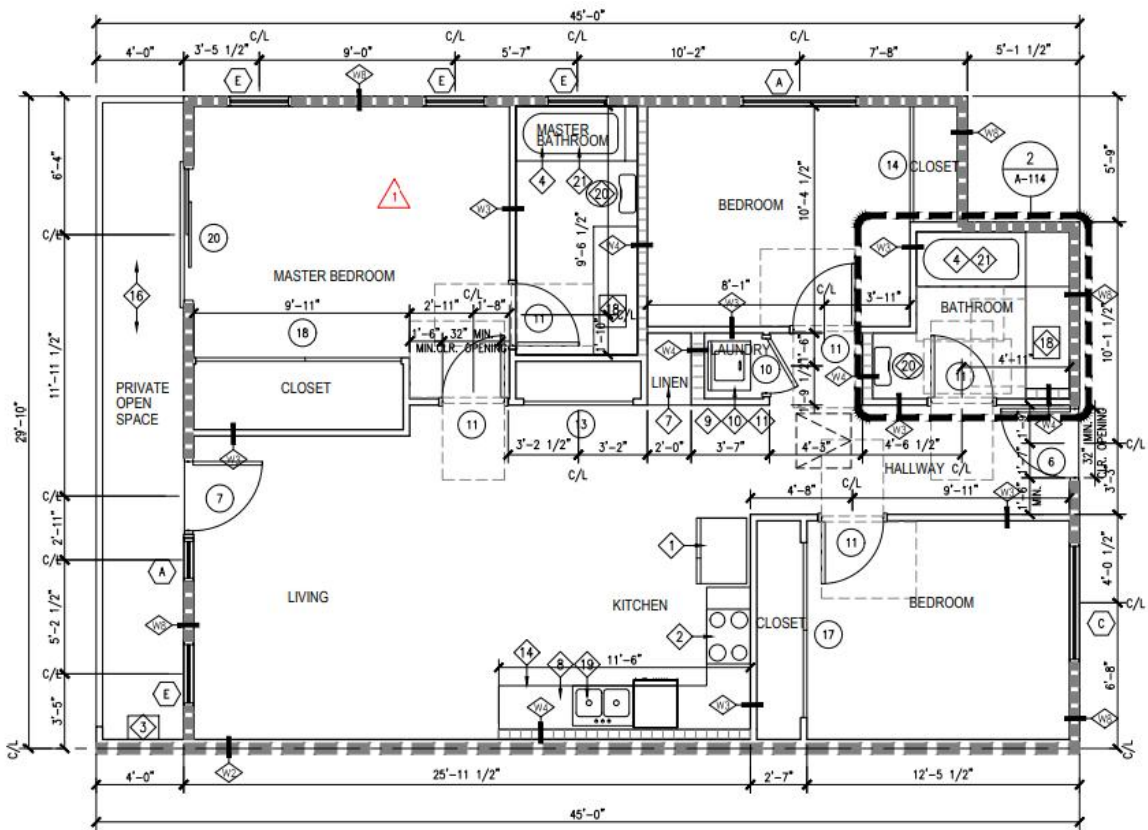
TOTOAL PLAN TYPE : 5

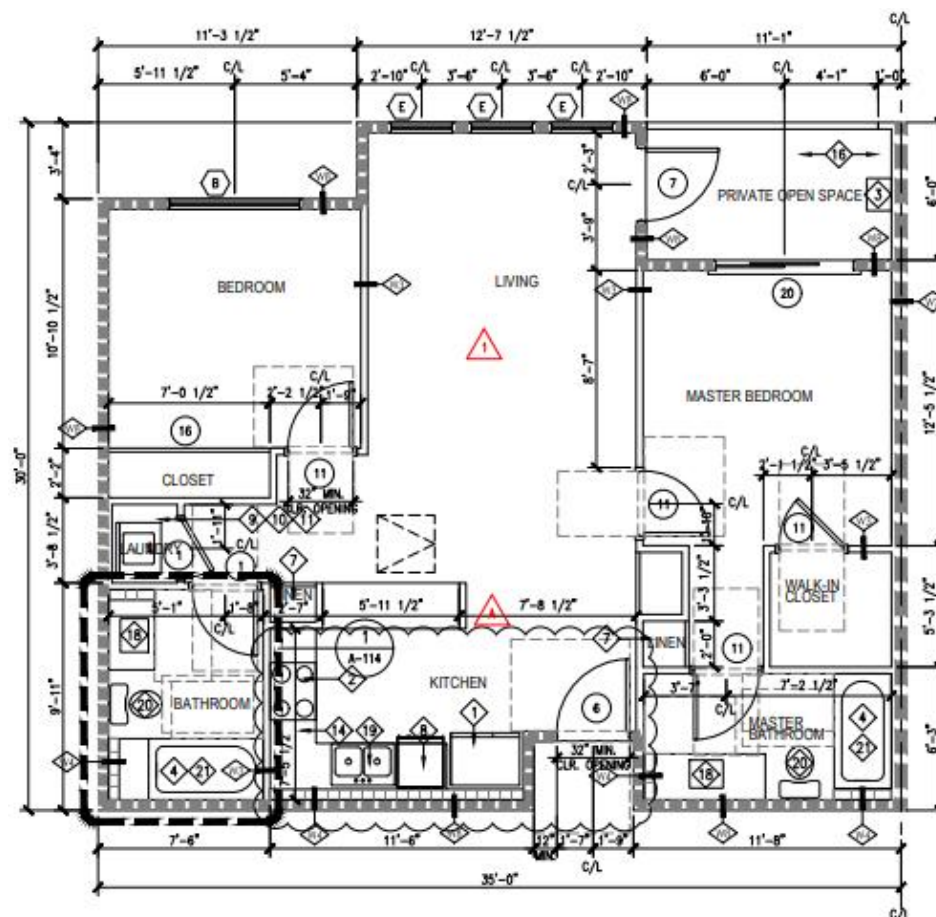
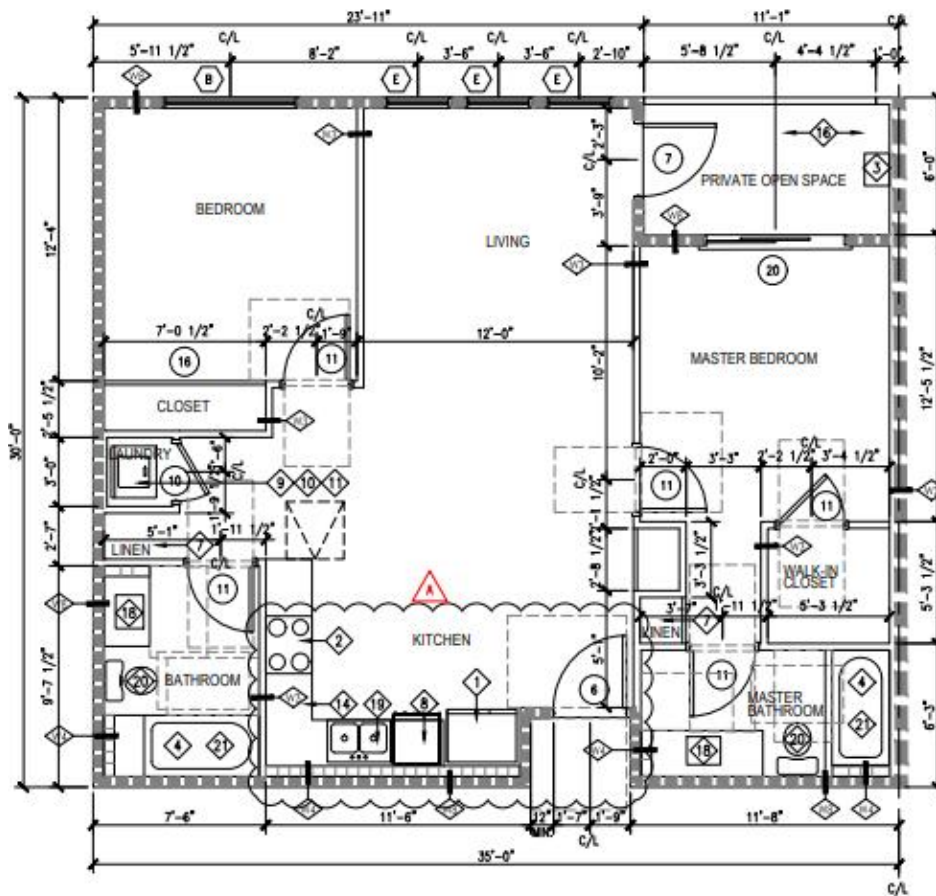
TOTAL PARKING SPACE : 38



Rendering
3 STORY MULTI-
FAMILY RESIDENTIAL
PROJECT WITH OPEN
PARKING GARAGE









The Gabriel

Monthly Rent

\$2,380 - \$4,425

Bedrooms

1 - 3 bd

Square Feet

658 - 1,397 sq ft



Monterey Station

Monthly Rent

\$1,750 - \$2,700

Bedrooms

Studio - 2 bd

Square Feet

384 - 1,075 sq ft



El Sereno

Monthly Rent

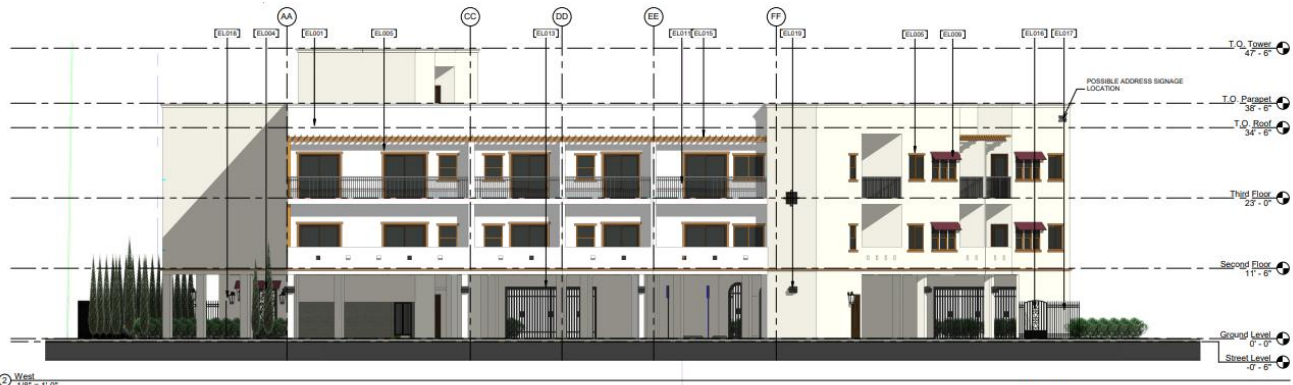
\$1,965 - \$2,465

Bedrooms

1 - 2 bd

Square Feet

500 - 1,021 sq ft



NOTE:

1. ROOFING MATERIAL CLASS A, TPO SINGLE PLY ROOFING.
2. STREET FRONT RAILINGS SHALL HAVE 20% TRANSPARENCY DISTRIBUTED EVENLY THROUGHOUT RAILING.



