

28 West 27th Street, New York, NY 10001 (Unit#501)

Between Fifth and Sixth Avenue | NoMad



Approximate Size: Unit #501 (750 SF)

Asking Rent: \$39 PSF

Site status: Move in Condition, white box

Possession: IMD

Term: 1-10 year, plus option

Frontage: 59 feet

Ceiling Height: 10 feet

Neighbors:

Madison Square Park, Korean Town, Penn Station, Virgin Hotel, Empire State Building, Herald Square, CVS, Fashion Institute

Comments:

Private Office For Rent; High Ceiling; Quality Hardwood Floor Large Windows With Great Light

*Location Close to All

*24/7

*Imd Occupancy

Remarks:

Ideal for Tech, Media, PR, Advertising

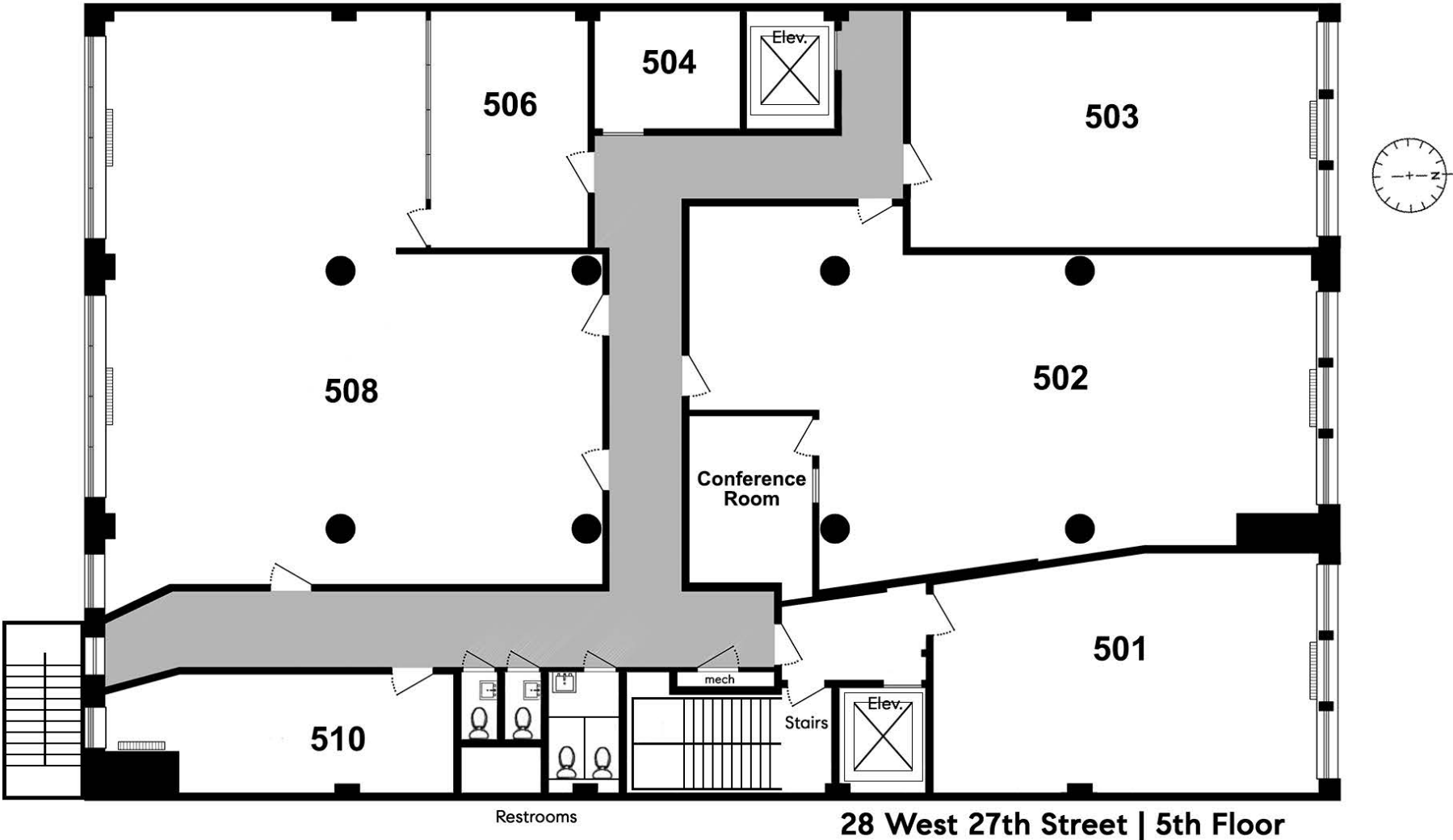
All units can be combined or divided

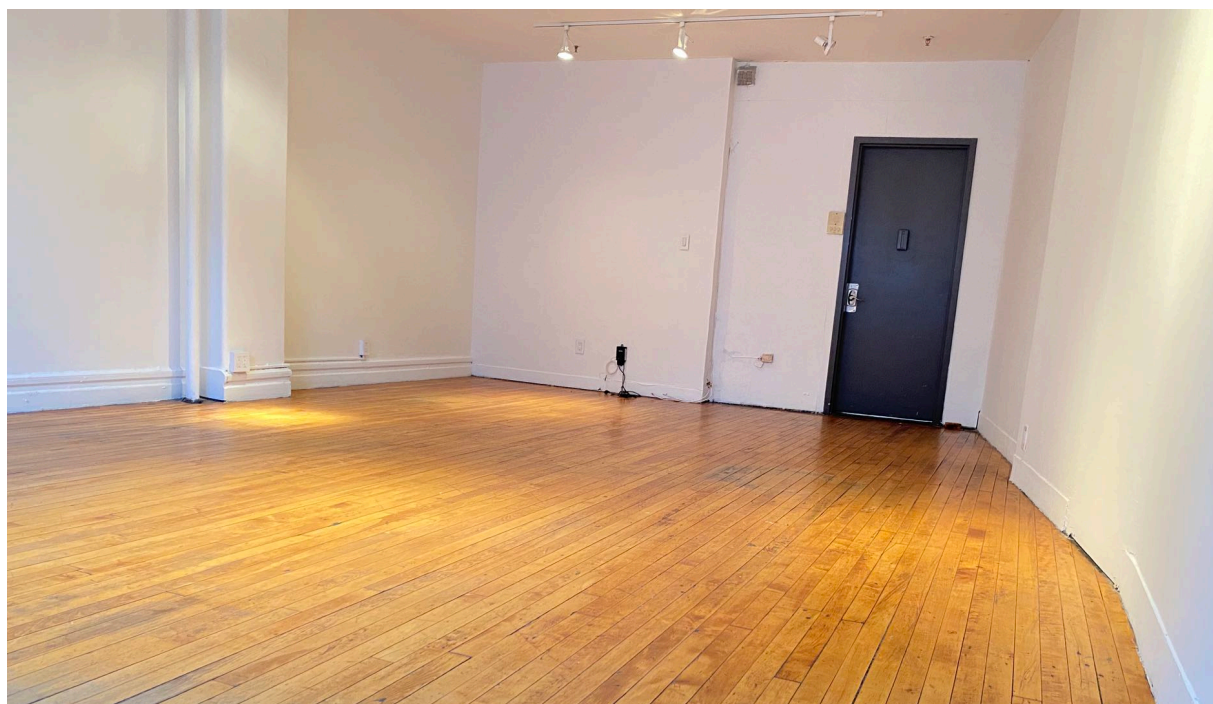
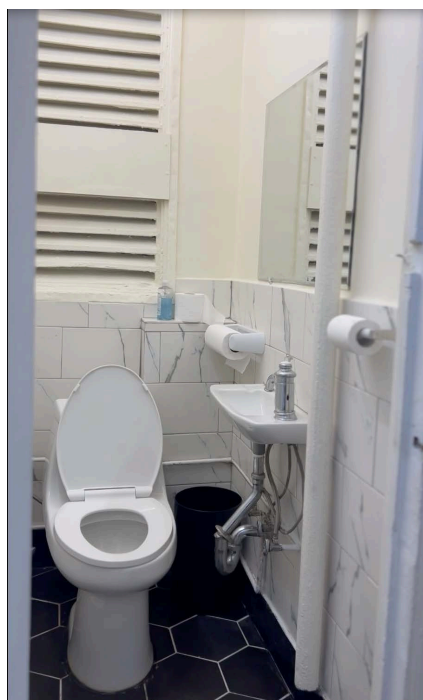
Call for inquiry

Transportation:

Subway, MTA, Riders paradise

Floor Plan





Unit 5 0 1

All information supplied is from sources deemed reliable and is furnished subject to errors, omissions, modifications, removal of the listing from sale or lease, and to any listing conditions, including the rates and manner of payment of commissions for particular offerings imposed by Compass. Any square footage or dimensions set forth are approximate.



Building image

NoMad
 (Between Lexington and 6th Avenues,
 North of 25th Street and South of 30th Street)

