

FOR LEASE OR BUILD-TO-SUIT

135th & Greenwood
Olathe, Kansas



SITE SUMMARY

- 55,000 SF Outlot
- Anchored by Walmart, Hobby Lobby and Academy Sports
- Zoned C-2
- Excellent Visibility & Access from 135th Street



A MEMBER OF
CHAINLINKS
RETAIL ADVISORS

Bob Johnson

bjohnson@rhjohnson.com | 816.268.2450

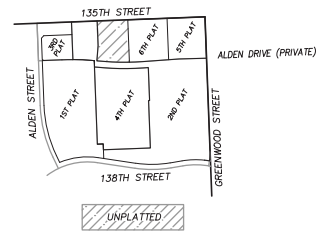
Bryan Jantsch

bjantsch@rhjohnson.com | 816.268.2455

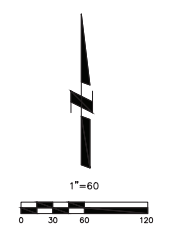
4520 Madison Avenue, Suite 300 • Kansas City, MO 64111 • 816.561.5551 • rhjohnson.com

While this information is deemed correct, no representation is made as to the accuracy thereof. This information is subject to errors, omissions and change of terms at any time. The property may be withdrawn from the market without notice.

SITE PLAN



LOCATION MAP



SALES MAP

PROJECT NO. 17-0004			
ALDEN CENTER 135TH STREET & ALDEN STREET			
Payne & Brockway P.A.			
CIVIL ENGINEERS & LAND SURVEYORS 450 SOUTH KANSAS AVE. OLAHIE, KANSAS 66661 PH: 913.782.4800 FAX: 913.782.0907 WWW.PAYNEBROCKWAY.COM			
DATE 8/30/18	SCALE HOR: 1"=60' VERT: N/A	SHEET 1	OF 1



Academy
SPORTS + OUTDOORS

HOBBY
LOBBY

HEALTH
GENESIS
CLUBS

Walmart

HCA
MIDWEST
HEALTH

METCALF
DISCOUNT
LIQUOR

TIRE
PLUS

Wendy's
OLD FASHIONED
HAMBURGERS

verizon
CHIPOTLE
MEXICAN
BURRITOS

MENARDS

mazuma
Credit Union

GREENWOOD

26,743 VPD

135TH STREET

55,000 SF
LEASE OR BTS

Summary Profile

2010-2020 Census, 2025 Estimates with 2030 Projections
 Calculated using Weighted Block Centroid from Block Groups



Lat/Lon: 38.8837/-94.7517

135th & Greenwood Olathe, KS 66062	1 mi radius	3 mi radius	5 mi radius
Population			
2025 Estimated Population	12,421	99,585	236,349
2030 Projected Population	12,517	98,362	239,693
2020 Census Population	13,883	102,112	226,200
2010 Census Population	10,853	94,670	201,152
Projected Annual Growth 2025 to 2030	0.2%	-0.2%	0.3%
Historical Annual Growth 2010 to 2025	1.0%	0.3%	1.2%
2025 Median Age	38.1	36.9	37.5
Households			
2025 Estimated Households	4,928	38,133	91,620
2030 Projected Households	5,068	38,442	94,913
2020 Census Households	4,695	37,225	85,217
2010 Census Households	3,696	34,195	75,116
Projected Annual Growth 2025 to 2030	0.6%	0.2%	0.7%
Historical Annual Growth 2010 to 2025	2.2%	0.8%	1.5%
Race and Ethnicity			
2025 Estimated White	76.5%	75.4%	75.1%
2025 Estimated Black or African American	5.4%	6.6%	6.2%
2025 Estimated Asian or Pacific Islander	10.3%	7.0%	8.5%
2025 Estimated American Indian or Native Alaskan	0.2%	0.3%	0.3%
2025 Estimated Other Races	7.5%	10.7%	10.0%
2025 Estimated Hispanic	7.8%	11.1%	10.3%
Income			
2025 Estimated Average Household Income	\$171,390	\$143,605	\$144,796
2025 Estimated Median Household Income	\$126,430	\$113,947	\$117,766
2025 Estimated Per Capita Income	\$68,051	\$55,070	\$56,212
Education (Age 25+)			
2025 Estimated Elementary (Grade Level 0 to 8)	0.8%	1.6%	1.7%
2025 Estimated Some High School (Grade Level 9 to 11)	1.6%	2.3%	2.5%
2025 Estimated High School Graduate	12.1%	13.7%	13.6%
2025 Estimated Some College	18.4%	19.5%	17.3%
2025 Estimated Associates Degree Only	5.0%	7.5%	7.2%
2025 Estimated Bachelors Degree Only	41.5%	34.7%	35.1%
2025 Estimated Graduate Degree	20.6%	20.7%	22.6%
Business			
2025 Estimated Total Businesses	269	2,758	8,736
2025 Estimated Total Employees	2,209	32,927	137,037
2025 Estimated Employee Population per Business	8.2	11.9	15.7
2025 Estimated Residential Population per Business	46.2	36.1	27.1

©2026, Sites USA, Chandler, Arizona, 480-491-1112 Demographic Source: Applied Geographic Solutions 11/2025, TIGER Geography - RS1

This report was produced using data from private and government sources deemed to be reliable. The information herein is provided without representation or warranty.

