

1330 HOWARD STREET

FOR LEASE | HARD CORNER STANDALONE COMMERCIAL BUILDING

TCP
TOUCHSTONE
COMMERCIAL PARTNERS



WWW.TCPRE.COM

ZACH HAUPERT zhaupert@tcpre.com
D 415.539.1121 | C 415.812.1219

MICHAEL SANBERG msanberg@tcpre.com
D 415.539.1103 | C 415.697.6088

1330 HOWARD STREET

PROPERTY SUMMARY

ADDRESS

1330 Howard Street, San Francisco, CA 94103

AVAILABLE SPACE

Second Floor +/- 4,844 Square Feet

Ground Floor +/- 7,792 Square Feet

Lower Level +/- 3,450 Square Feet

TOTAL +/- 16,086 Square Feet

**Floors can be Leased Together or Separately*

RENTAL RATE

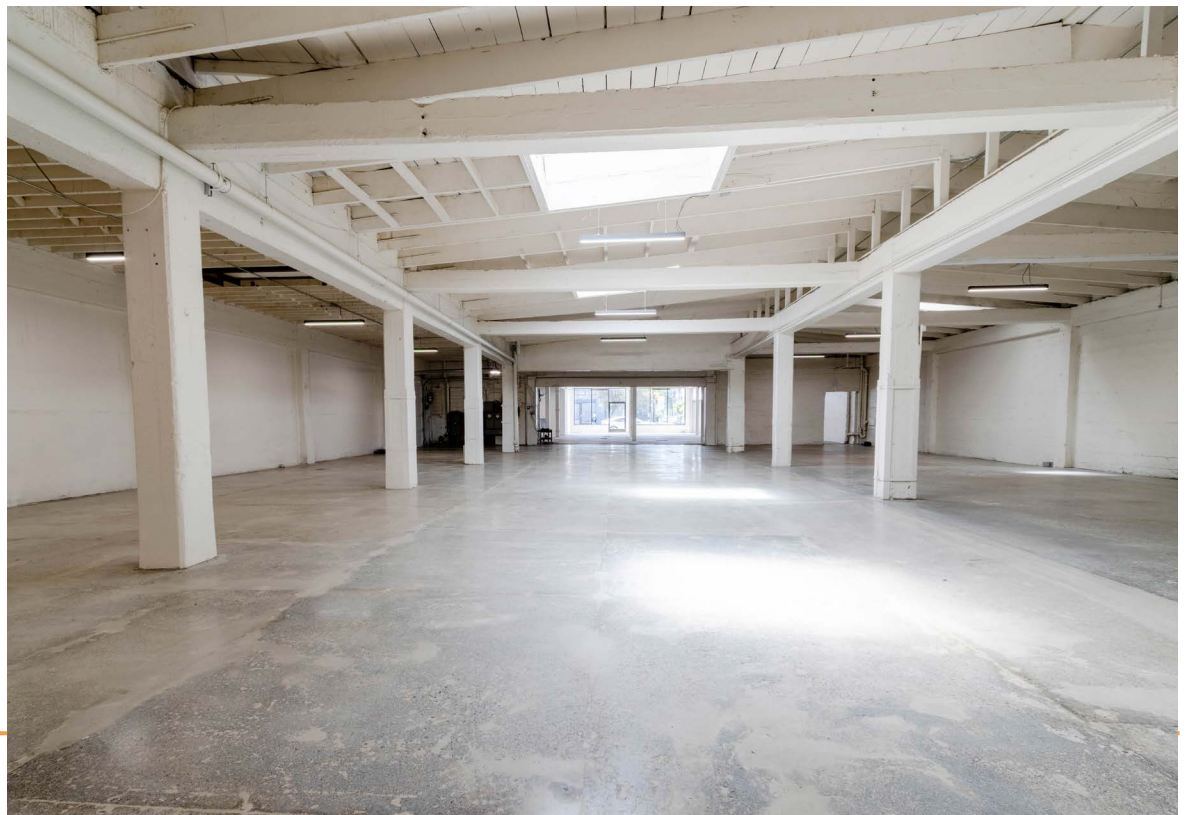
\$27 / Square Foot / Year, Industrial Gross

AVAILABLE

Immediately

BUILDING ATTRIBUTES

- + Brick & Timber Building Flex / Warehouse
- + Build to Suit Available (Great For Commissary Kitchen)
- + Three (3) Drive-In Roll-Up Doors
- + Heavy Power: 3 Phase, 1,000 Amps
- + Four (4) Restrooms
- + Freight Elevator Services Lower Level
- + Walkable to Mission St, Civic Center, BART, Muni, & Other SOMA Amenities

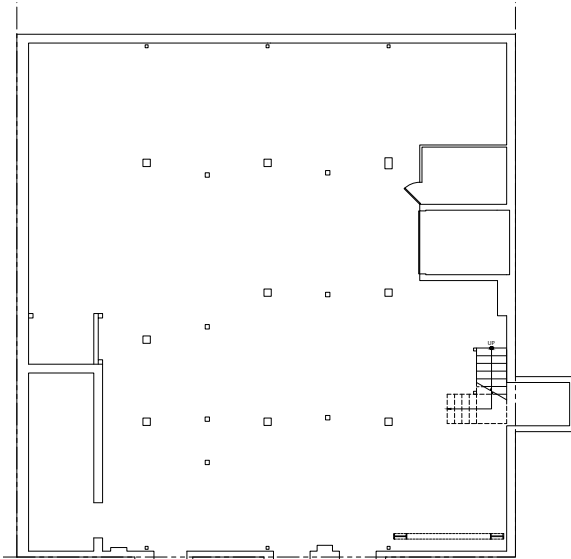


1330 HOWARD STREET

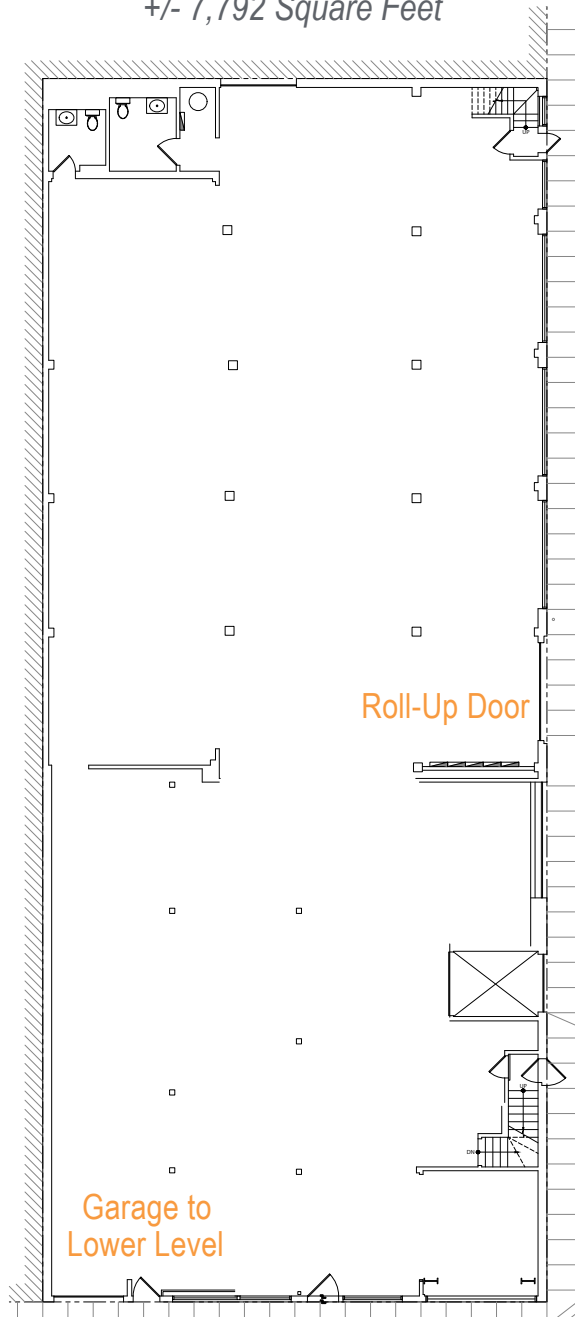
Floor Plans

+/- 16,086 Square Feet

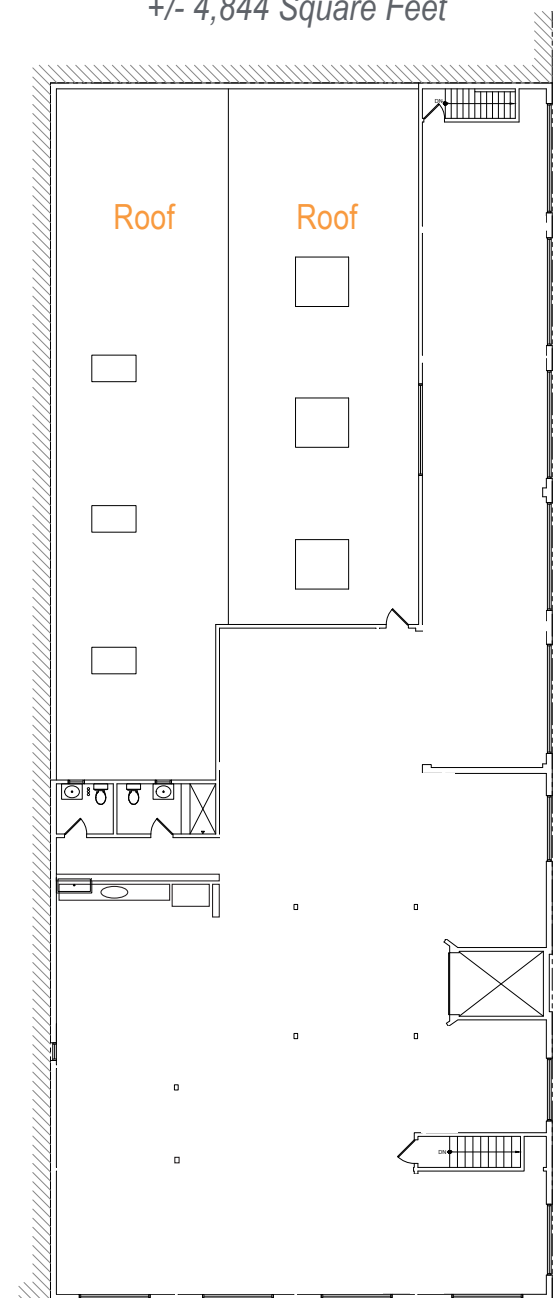
Lower Level +/- 3,450 Square Feet



Ground Floor +/- 7,792 Square Feet



Second Floor +/- 4,844 Square Feet



1330 HOWARD STREET

LOCATION OVERVIEW

Desirable South of Market location, walkable to many amenities and to surrounding neighborhoods.



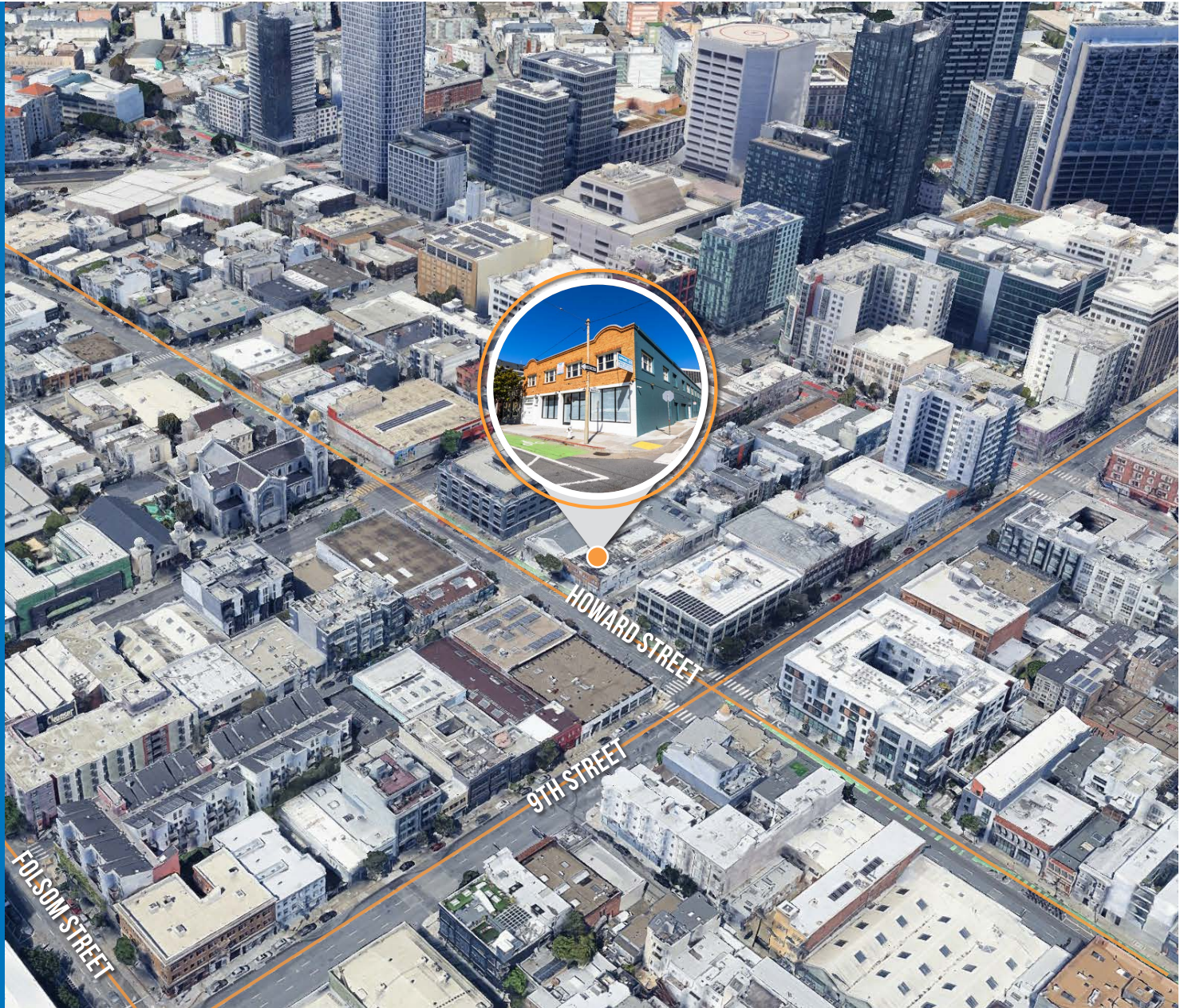
06 MIN to 10th St Muni
09 MIN to Van Ness Station
10 MIN to Civic Center BART



05 MIN to Hayes Valley
10 MIN to Union Square
15 MIN to Financial District



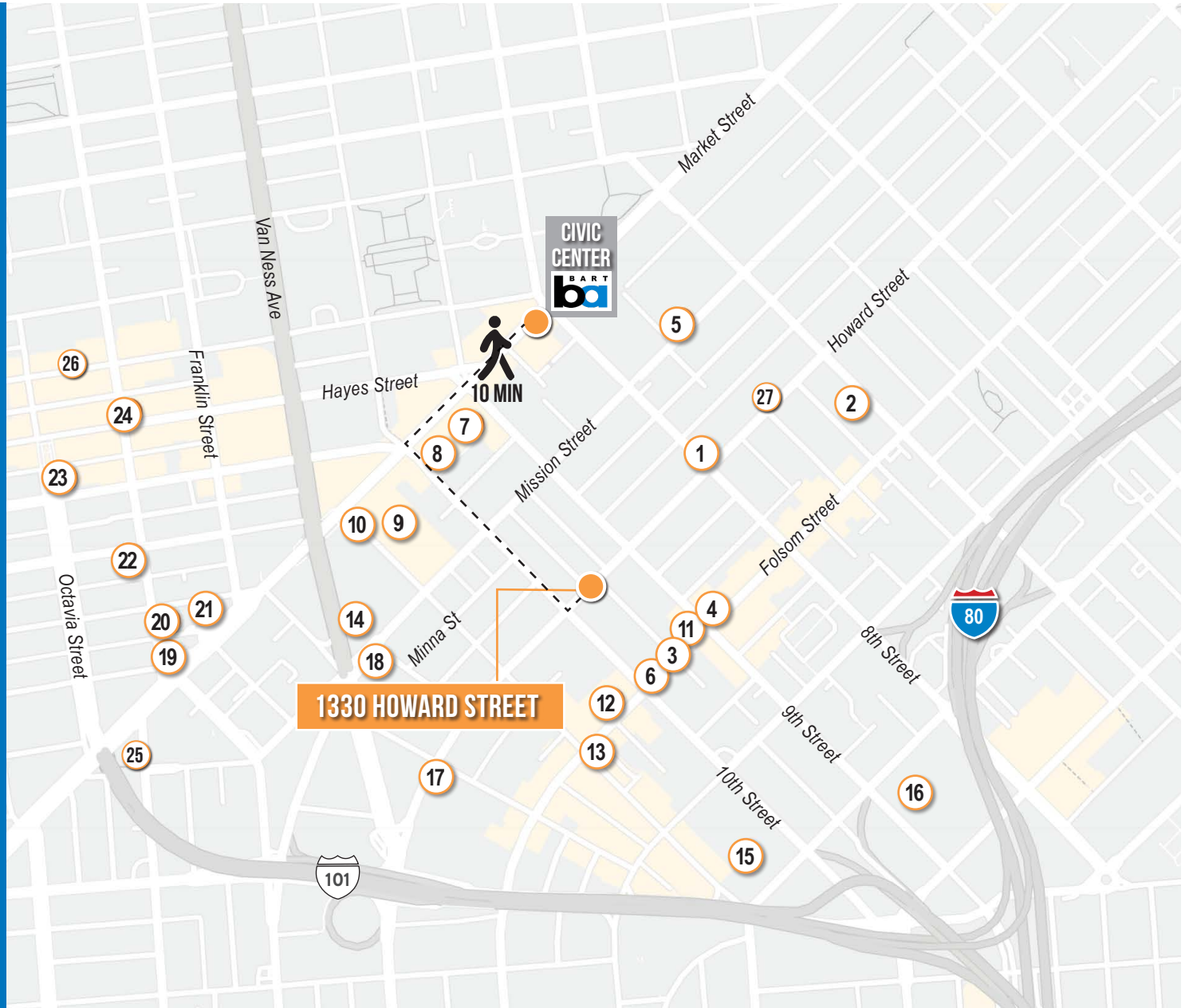
03 MIN to 101 On-Ramp
05 MIN to 80 On-Ramp
06 MIN to 280 On-Ramp



1330 HOWARD STREET

NEARBY AMENITIES

- 1.....Harvest Urban Market
- 2.....Sightglass Coffee
- 3.....Dento Piano Cafe and Bar
- 4.....Azucar Lounge
- 5.....City Beer Store
- 6.....Sextant Coffee Roasters
- 7.....Walgreens
- 8.....Microsoft
- 9.....Square
- 10.....Uber
- 11.....Northern China BBQ
- 12.....Extra Space Storage
- 13.....Basil Canteen
- 14.....Blue Bottle Coffee
- 15.....Costco
- 16.....Trader Joe's
- 17.....1601 Bar & Kitchen
- 18.....Zaoh Sushi Restaurant
- 19.....Espetus Churrascaria
- 20.....Hotel Biron
- 21.....Zuni Cafe
- 22.....Rich Table
- 23.....Biergarten
- 24.....Absinthe Brasserie & Bar
- 25.....Martuni's
- 26.....Birba
- 27.....Enterprise Brewing Co



1330 HOWARD STREET



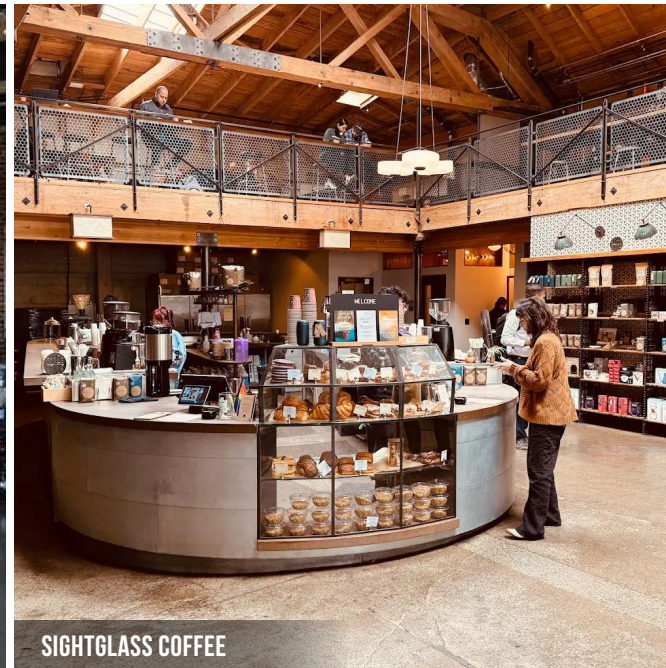
AZUCAR LOUNGE



ENTERPRISE BREWING CO



BASIL CANTEEN



SIGHTGLASS COFFEE



DENTO SAKE & CRAFT BEER

1330 HOWARD
STREET



Corp. Lic. 01112906
www.tcpre.com

ZACH HAUPERT

D 415.539.1121 C 415.812.1219
zhaupert@tcpre.com DRE # 01822907

MICHAEL SANBERG

D 415.539.1103 C 415.697.6088
msanberg@tcpre.com DRE # 01930041

This document has been prepared by Touchstone Commercial Partners for advertising and general information only. Touchstone Commercial Partners makes no guarantees, representations or warranties of any kind, expressed or implied, regarding the information including, but not limited to, warranties of content, accuracy and reliability. Any interested party should undertake their own inquiries as to the accuracy of the information. Touchstone Commercial Partners excludes unequivocally all inferred or implied terms, conditions and warranties arising out of this document and excludes all liability for loss and damages arising there from. This publication is the copyrighted property of Touchstone Commercial Partners and/or its licensor(s). ©2025. All rights reserved.