

1554 & 1574 CEDAR GROVE ROAD

CONLEY, GA
30288

For Sale
3.635± Acres IOS

BRIAN BRATTON, SIOR

Senior Vice President
404.942.2028
bbratton@kingindustrial.com

STEVE RATCHFORD, SIOR, CCIM

Senior Vice President
404.942.2003
sratchford@kingindustrial.com

King Industrial
Realty, Inc.

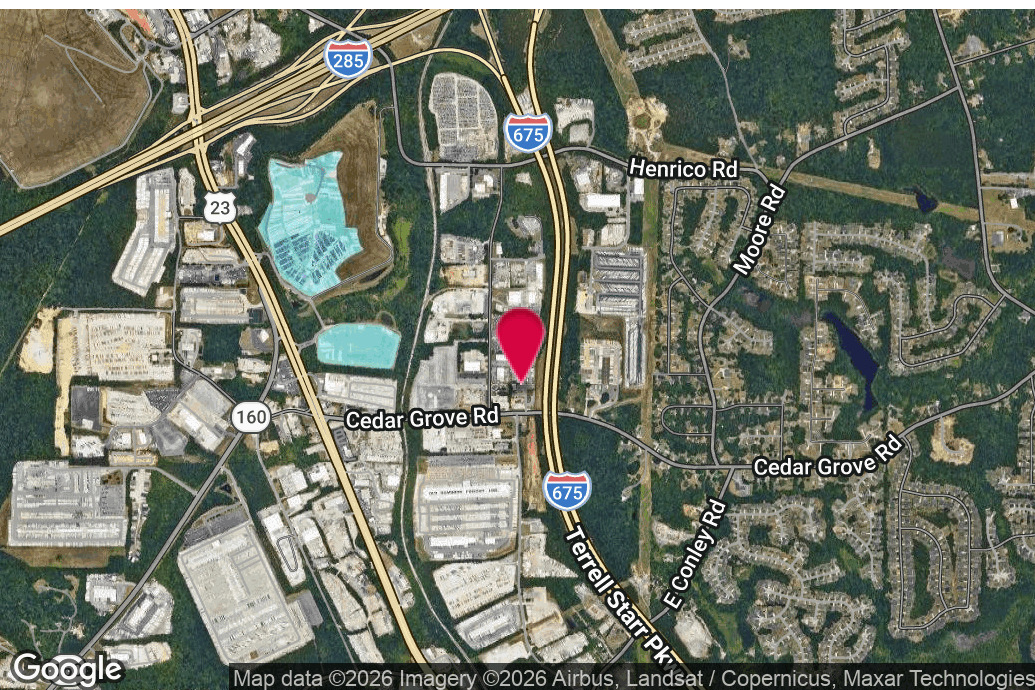
Industrial • Commercial • Investment
404.942.2000 | kingindustrial.com

Bonsal Road

(I 675)

Cedar Grove Road

FOR SALE
IOS
3.635± ACRES



PROPERTY HIGHLIGHTS

- 1 Truck Maintenance Building Totaling 8,490±SF
- 1,000+/- SF Office Space
- 1,500± Shed
- (3) 16'h x 10'w Drive-In Doors
- (1) 14'h x 10'w Drive-In Door
- Oil Change Pit
- Paved & Fenced Lot
- Zoned M

BRIAN BRATTON, SIOR

Senior Vice President

404.942.2028

bbratton@kingindustrial.com

STEVE RATCHFORD, SIOR, CCIM

Senior Vice President

404.942.2003

sratchford@kingindustrial.com

Every effort has been made to provide accurate information, but no liability is assumed for errors or omissions.

king Industrial
Realty, Inc.

CORFAC
INTERNATIONAL

Industrial • Commercial • Investment
404.942.2000 | kingindustrial.com

ADDITIONAL PHOTOS



BRIAN BRATTON, SIOR

Senior Vice President

404.942.2028

bbratton@kingindustrial.com

STEVE RATCHFORD, SIOR, CCIM

Senior Vice President

404.942.2003

sratchford@kingindustrial.com

king Industrial
Realty, Inc. **CORFAC**
INTERNATIONAL

Industrial • Commercial • Investment
404.942.2000 | kingindustrial.com

Every effort has been made to provide accurate information, but no liability is assumed for errors or omissions.

ADDITIONAL PHOTOS



BRIAN BRATTON, SIOR

Senior Vice President

404.942.2028

bbratton@kingindustrial.com

STEVE RATCHFORD, SIOR, CCIM

Senior Vice President

404.942.2003

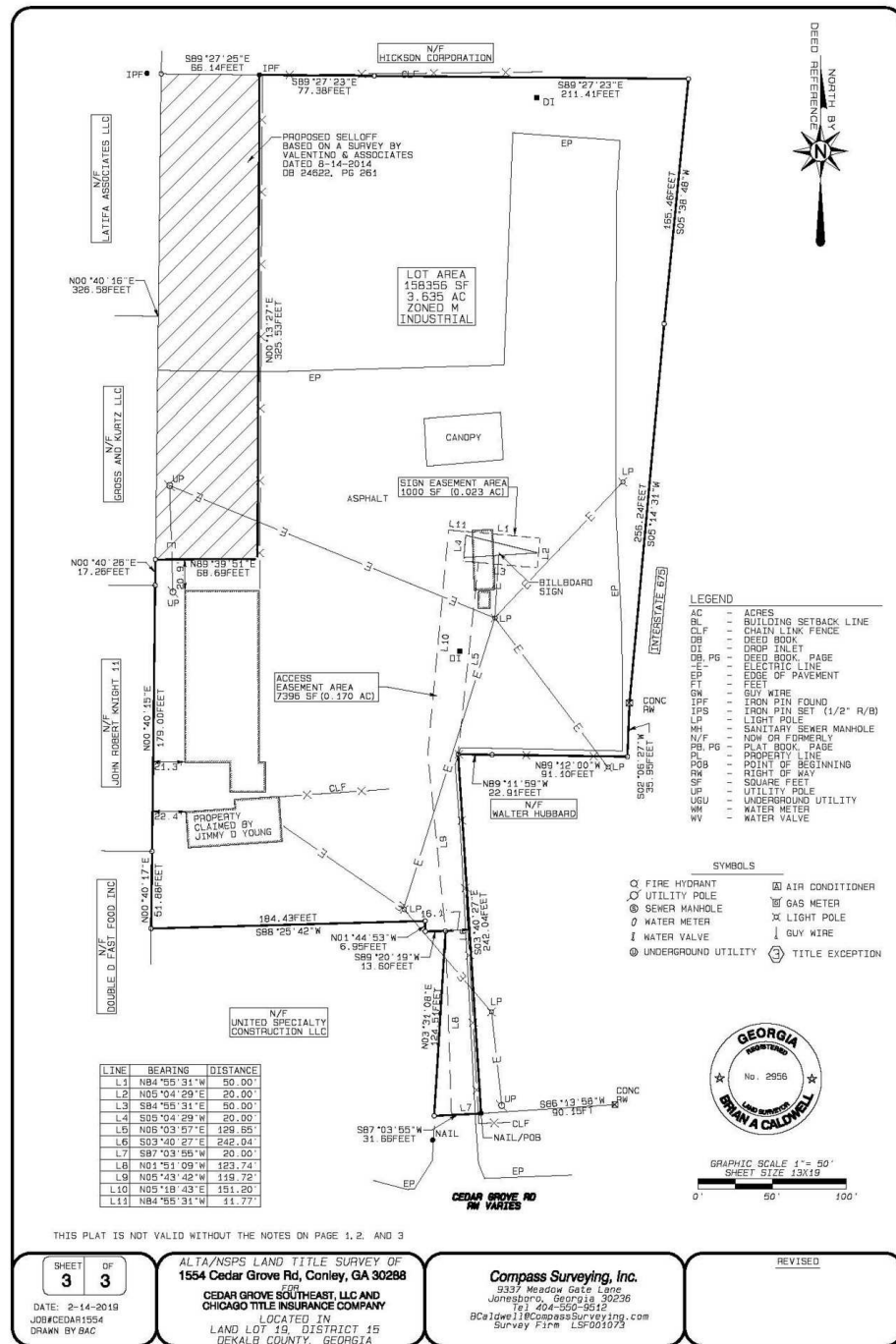
sratchford@kingindustrial.com

king Industrial
Realty, Inc. **CORFAC**
INTERNATIONAL

Industrial • Commercial • Investment
404.942.2000 | kingindustrial.com

Every effort has been made to provide accurate information, but no liability is assumed for errors or omissions.

SURVEY



BRIAN BRATTON, SIOR

Senior Vice President

404.942.2028

bbratton@kingindustrial.com

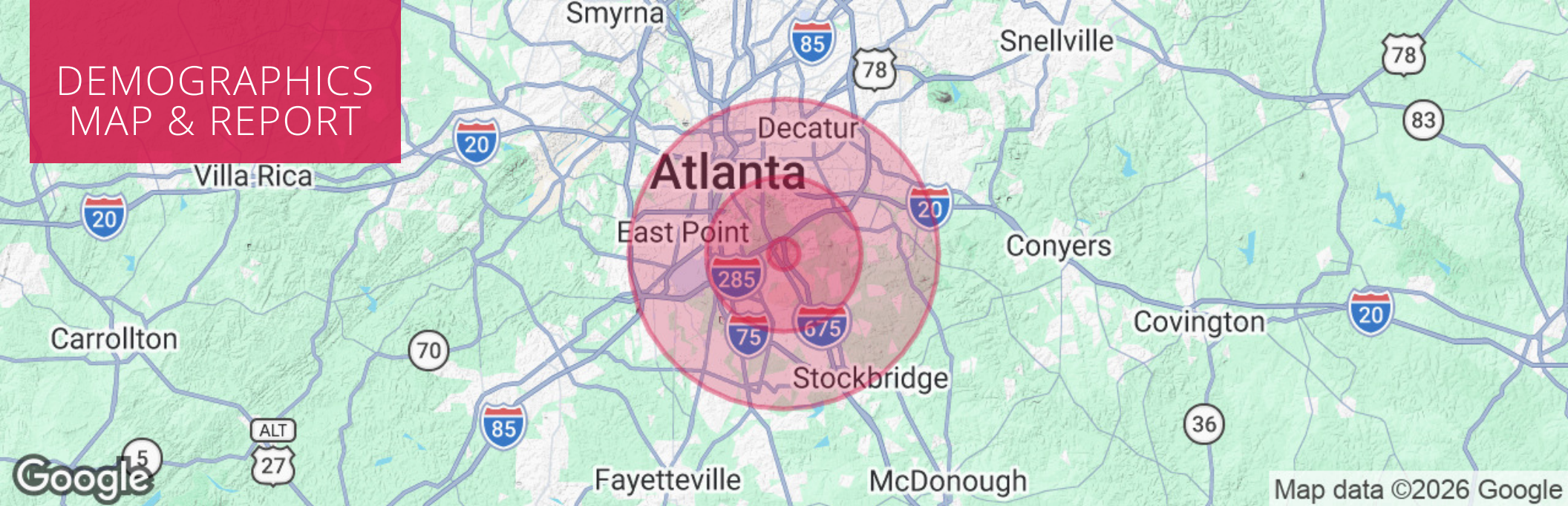
STEVE RATCHFORD, SIOR, CCIM

Senior Vice President

404.942.2003

sratchford@kingindustrial.com

DEMOGRAPHICS MAP & REPORT



POPULATION

	1 MILE	5 MILES	10 MILES
Total Population	2,598	154,837	920,194
Average Age	39	38	38
Average Age (Male)	38	36	37
Average Age (Female)	40	39	39

HOUSEHOLDS & INCOME

	1 MILE	5 MILES	10 MILES
Total Households	883	56,428	377,306
# of Persons per HH	2.9	2.7	2.4
Average HH Income	\$95,507	\$77,826	\$96,475
Average House Value	\$413,385	\$281,460	\$389,486

BRIAN BRATTON, SIOR

Senior Vice President

404.942.2028

bbratton@kingindustrial.com

STEVE RATCHFORD, SIOR, CCIM

Senior Vice President

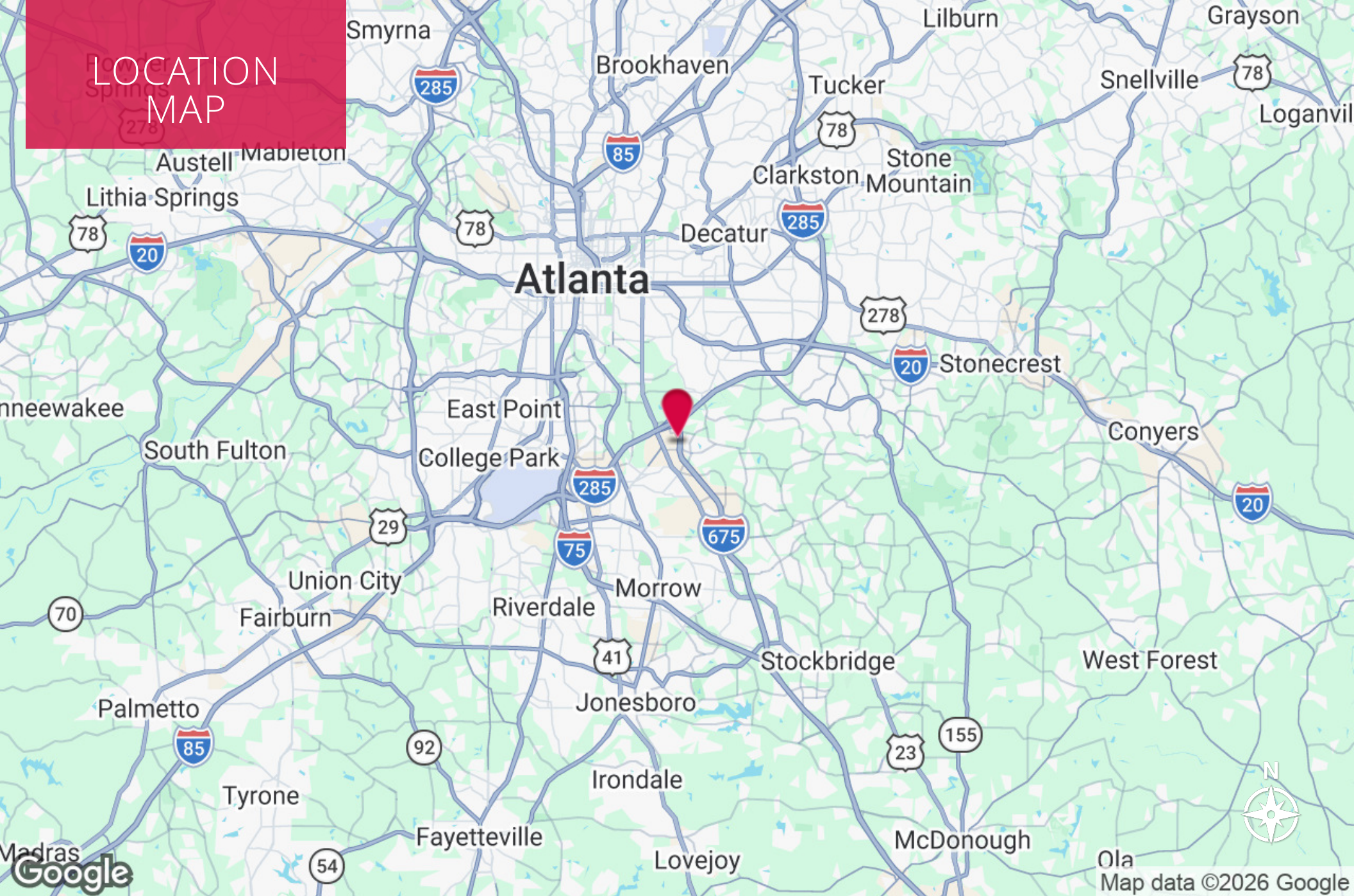
404.942.2003

sratchford@kingindustrial.com



Industrial • Commercial • Investment
404.942.2000 | kingindustrial.com

LOCATION MAP



BRIAN BRATTON, SIOR

Senior Vice President

404.942.2028

bbratton@kingindustrial.com

STEVE RATCHFORD, SIOR, CCIM

Senior Vice President

404.942.2003

sratchford@kingindustrial.com



Industrial • Commercial • Investment
404.942.2000 | kingindustrial.com

EXCLUSIVELY LISTED BY:

BRIAN BRATTON, SIOR

Senior Vice President
bbratton@kingindustrial.com
404.942.2028

STEVE RATCHFORD, SIOR, CCIM

Senior Vice President
sratchford@kingindustrial.com
404.942.2003

(I 675)

Cedar Grove Road

King Industrial
Realty, Inc.

Industrial • Commercial • Investment
404.942.2000 | kingindustrial.com