



# GLADES END

## Area Information

### Schools

Colonial Elementary School  
Read Mountain Middle School  
Lord Botetourt High School

### Tax Rate

\$.79 per \$100

### Water

Aqua Virginia Inc.

### Electric

Appalachian Power

[www.botetourtva.gov](http://www.botetourtva.gov)

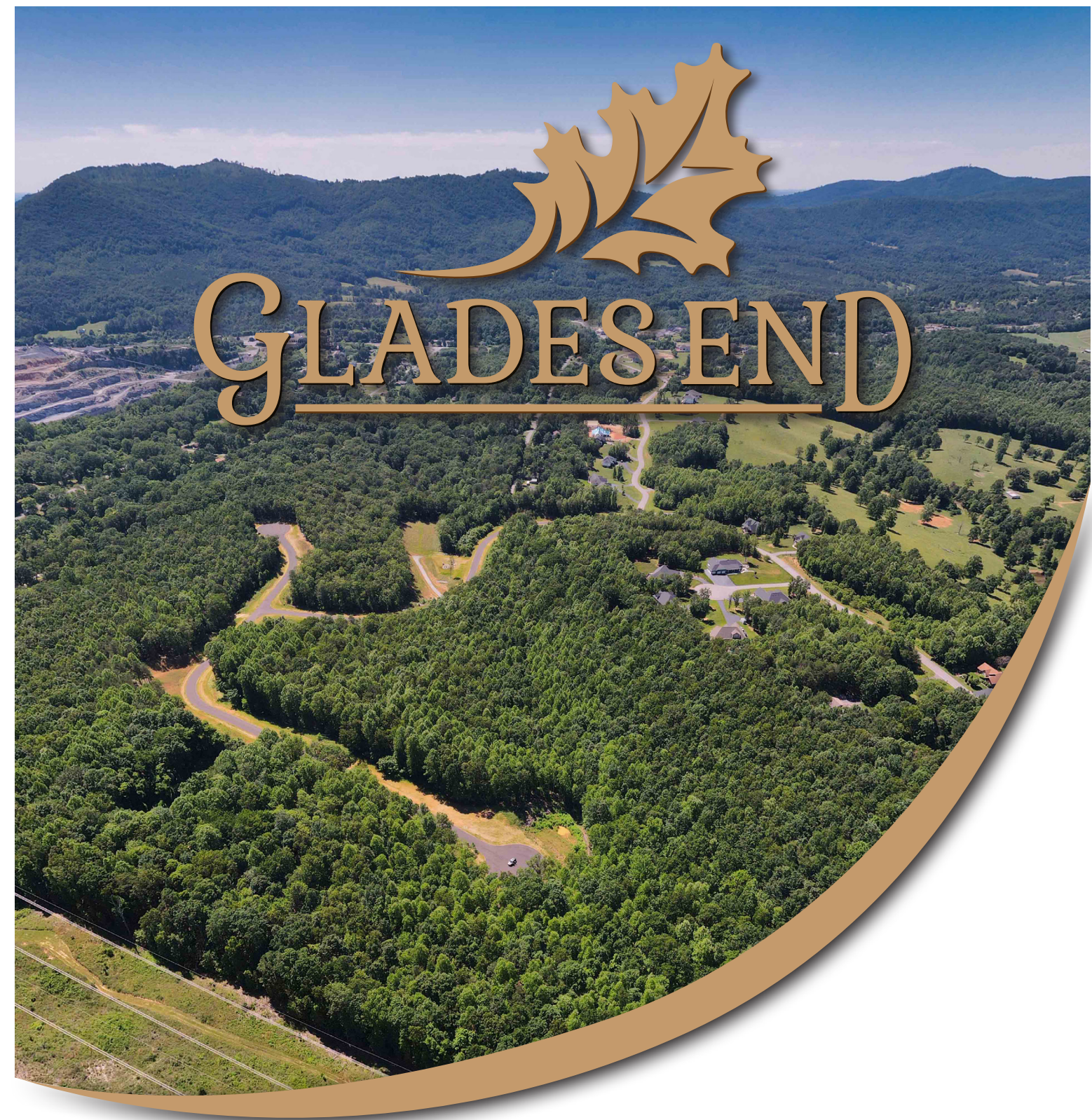
### POA Fees

\$50/year

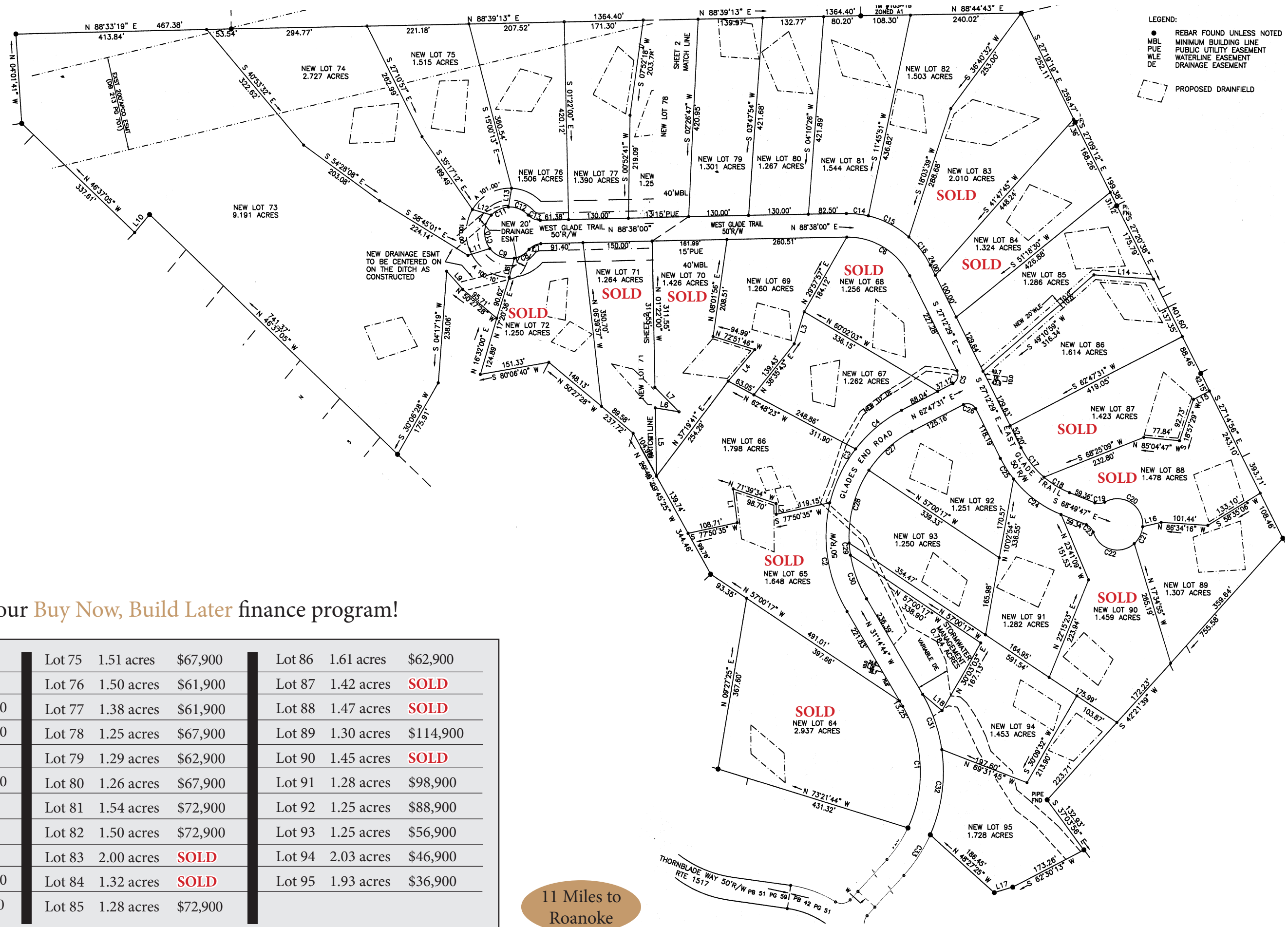


[facebook.com/countrysidehomes](https://facebook.com/countrysidehomes)

Offered by Countryside Land Company Lc  
[virginialanddirect.com](http://virginialanddirect.com) | [land@countrysideinc.biz](mailto:land@countrysideinc.biz) | 540-886-6155



## PREMIUM BUILDING SITES IN BOTETOURT COUNTY



Ask about our **Buy Now, Build Later** finance program!

Lot 64	2.93 acres	<b>SOLD</b>	Lot 75	1.51 acres	\$67,900	Lot 86	1.61 acres	\$62,900
Lot 65	2.91 acres	<b>SOLD</b>	Lot 76	1.50 acres	\$61,900	Lot 87	1.42 acres	<b>SOLD</b>
Lot 66	1.64 acres	\$67,900	Lot 77	1.38 acres	\$61,900	Lot 88	1.47 acres	<b>SOLD</b>
Lot 67	1.26 acres	\$62,900	Lot 78	1.25 acres	\$67,900	Lot 89	1.30 acres	\$114,900
Lot 68	1.25 acres	<b>SOLD</b>	Lot 79	1.29 acres	\$62,900	Lot 90	1.45 acres	<b>SOLD</b>
Lot 69	1.26 acres	\$67,900	Lot 80	1.26 acres	\$67,900	Lot 91	1.28 acres	\$98,900
Lot 70	1.42 acres	<b>SOLD</b>	Lot 81	1.54 acres	\$72,900	Lot 92	1.25 acres	\$88,900
Lot 71	1.26 acres	<b>SOLD</b>	Lot 82	1.50 acres	\$72,900	Lot 93	1.25 acres	\$56,900
Lot 72	1.25 acres	<b>SOLD</b>	Lot 83	2.00 acres	<b>SOLD</b>	Lot 94	2.03 acres	\$46,900
Lot 73	9.19 acres	\$77,900	Lot 84	1.32 acres	<b>SOLD</b>	Lot 95	1.93 acres	\$36,900
Lot 74	2.72 acres	\$46,900	Lot 85	1.28 acres	\$72,900			

11 Miles to  
Roanoke