



FOR LEASE

Retail on Pearl Street

888 Pearl Street
Eugene OR 97401

AVAILABLE

- 1,062 square feet
- Large retail area
- Restroom
- \$2,124 per month triple net, including utilities
Triple nets currently \$535 per month

Evans
Elder
Brown &
Seubert

COMMERCIAL REAL ESTATE

Jeff Elder
jeff@eebcre.com

Ashley Hope Wells
ashley@eebcre.com

541.345.4860

Licensed in the State of Oregon.

Pearl Street Retail

888 Pearl Street | Eugene OR 97401

Evans
Elder
Brown &
Seubert

COMMERCIAL REAL ESTATE

CONTACT

**Jeff
Elder**

jeff@eebcre.com

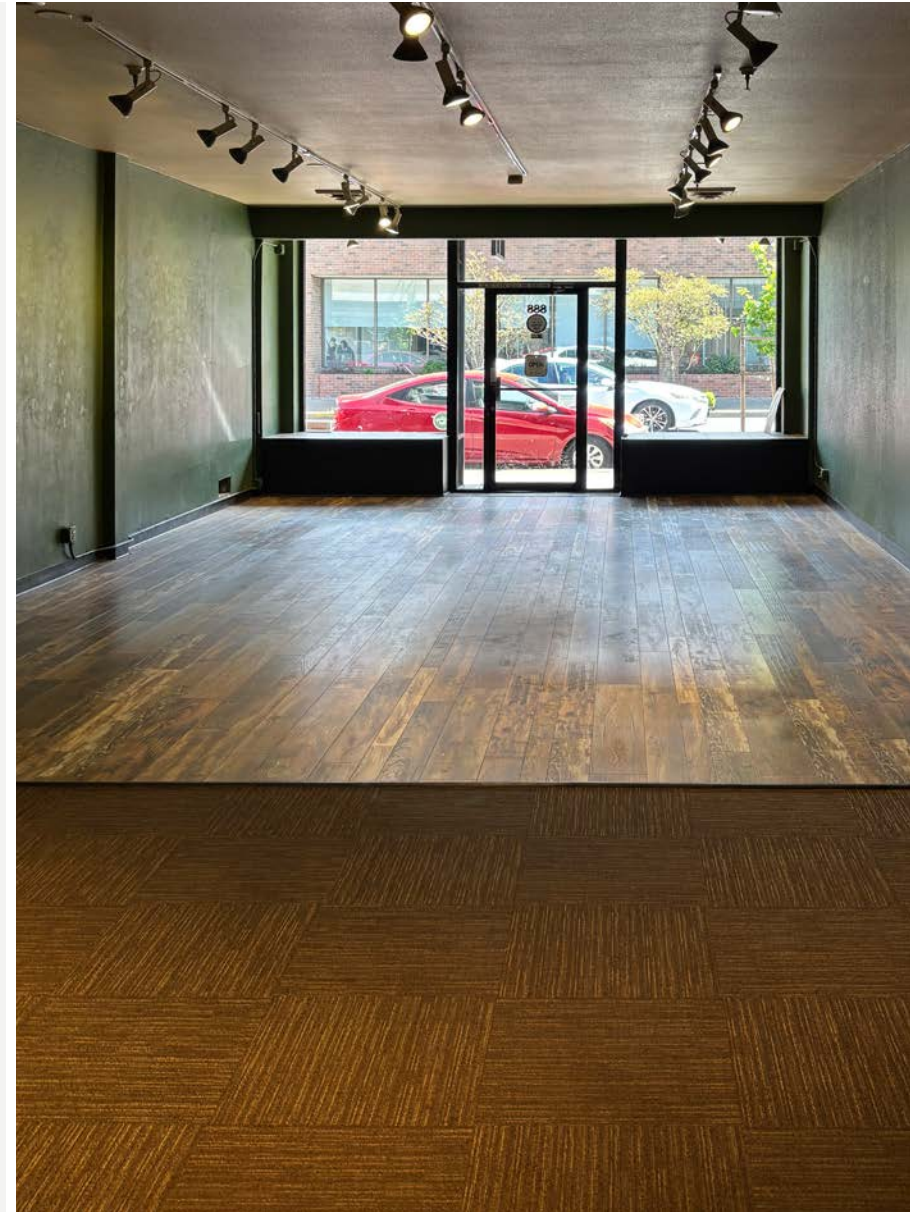
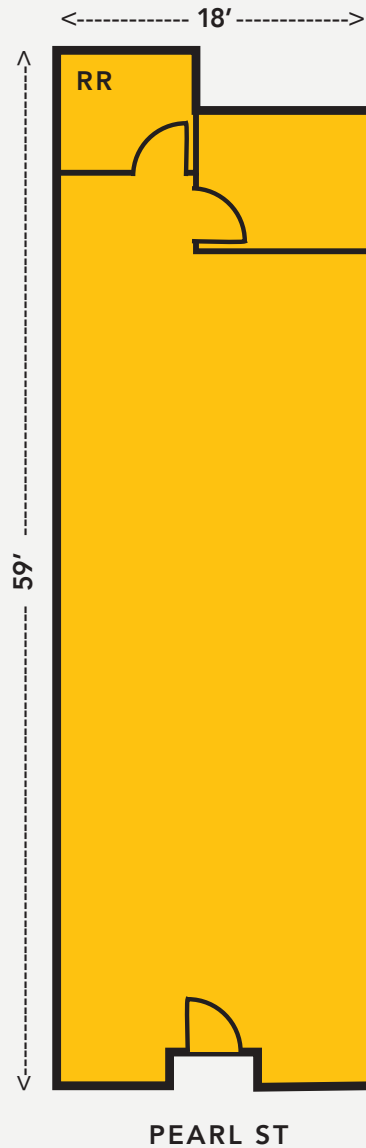
**Ashley
Hope
Wells**

ashley@eebcre.com

541.345.4860

101 East Broadway
Suite #101
Eugene, OR 97401

Licensed in the
State of Oregon.



Downtown Retail Space

888 Pearl Street | Eugene OR 97401

Evans
Elder
Brown &
Seubert

COMMERCIAL REAL ESTATE

CONTACT

Jeff
Elder

jeff@eebcre.com

Ashley
Hope
Wells

ashley@eebcre.com

541.345.4860

101 East Broadway
Suite #101
Eugene, OR 97401

Licensed in the
State of Oregon.

