

315 UNIVERSITY AVE WESTWOOD, MA

 ATLANTIC PROPERTIES



For More Information:

ROBERT PHINNEY

Vice President

rphinney@atlanticproperties.com

781-424-3099

Ben Stout, CCIM

Managing Partner

bstout@atlanticproperties.com

781-248-6774

PETER FARNUM

Senior Vice President

pfarnum@atlanticproperties.com

617-504-5657

Eddie Fettuccia

Associate

efettuccia@atlanticproperties.com

781-264-4082



ATLANTIC PROPERTIES



PROPERTY DESCRIPTION

Office /Medical office space available nearby University Station. 1st floor space available with flexible floor plans.

PROPERTY HIGHLIGHTS

- Located in Vibrant Business Area
- ADA Compliant Building
- Amenity Rich Area
- Ample on-site parking available

OFFERING SUMMARY

- Lease Rate: \$25.00/SF/YR (NNN)
- Lease Term: Negotiable
- Suites Available: 102 & 103. Can be leased as small as 2,500 SF or as large as 7,500 SF total.
- Building Size: 30,000 SF

AVAILABLE SUITES

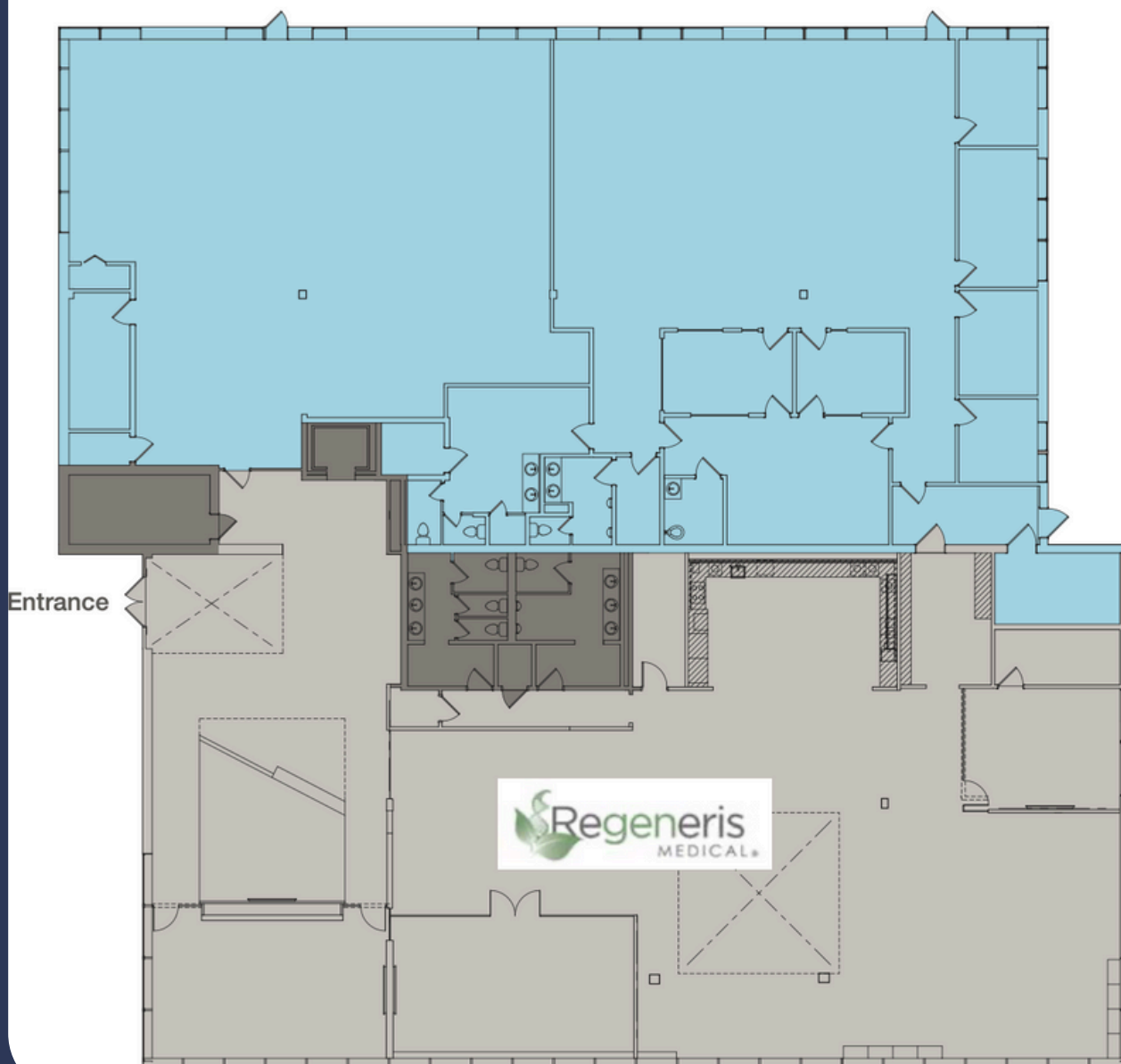
- Various Suites Available
- Up to 7,500 SF Available

First Floor Space Available

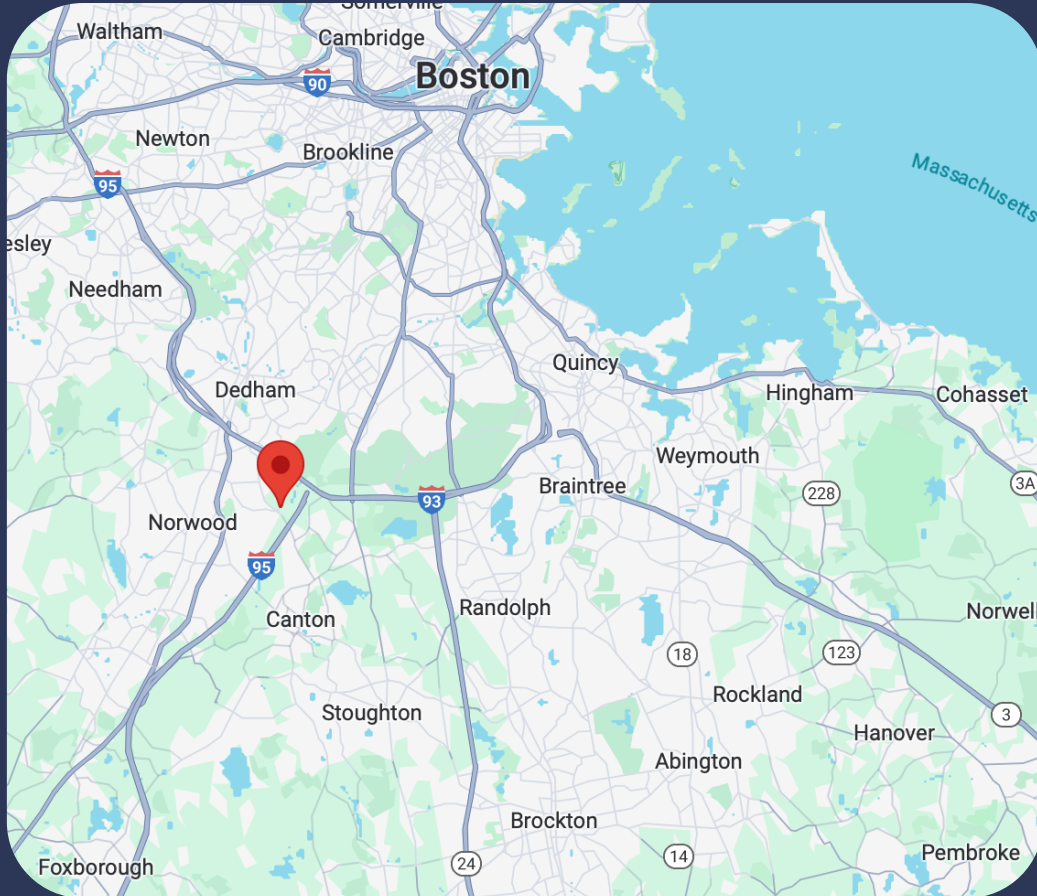
FIRST FLOOR

3,000-7,500 SF Available

Drive-Thru Capability



315 University Ave, Westwood, MA



Mass Pike

15 Minutes

Logan Airport

35 Minutes

I-495

20 Minutes



Back Bay Station

8 Minutes

South Station

15 Minutes

Providence Station

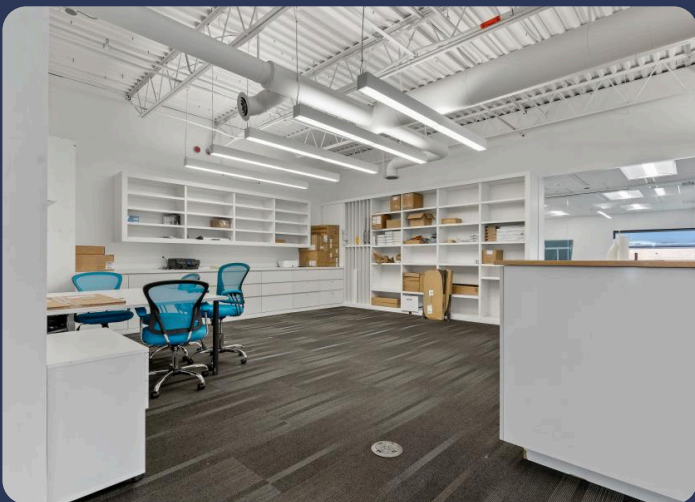
22 Minutes

315 University Ave, Westwood, MA, 02090

www.atlanticproperties.com

ADDITIONAL PHOTOS

Office/Medical Office Space For Lease



www.atlanticproperties.com