

Property For Lease

2280 Grand Ave

2280 Grand Ave Baldwin, NY 11510



For More Information:



Christopher Pesce

Associate Broker
Douglas Elliman Commercial - Long Island
631.858.2470
christopher.pesce@elliman.com



Kenneth Hester

Licensed Real Estate Salesperson
Douglas Elliman Commercial - Long Island
516.641.0342
kenneth.hester@elliman.com



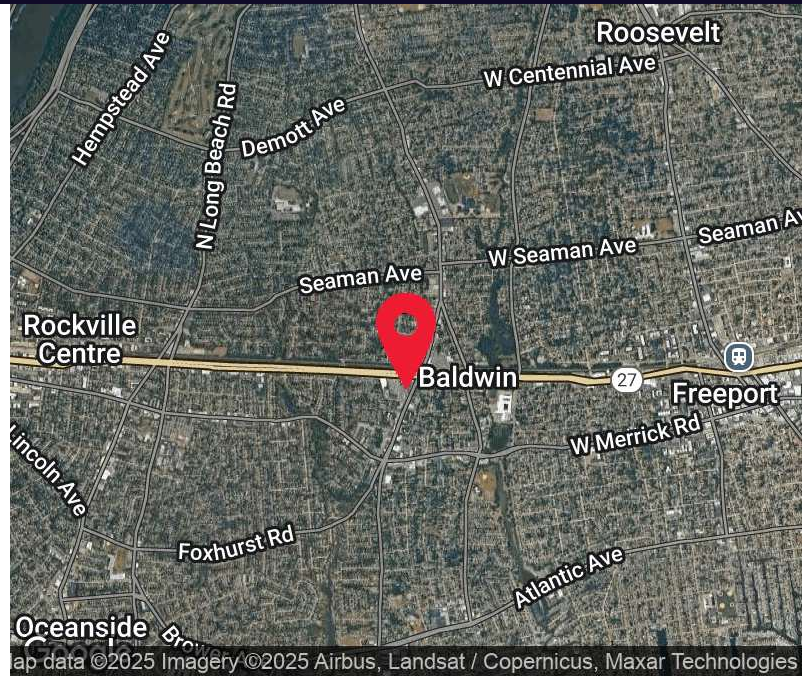
WWW.ELLIMANCOMMERCIAL.COM

THE PROPERTY CONTAINED WITHIN THIS DOCUMENT IS BEING EXCLUSIVELY REPRESENTED BY DOUGLAS ELLIMAN REAL ESTATE COMMERCIAL DIVISION, 550 SMITHTOWN BYPASS STE. 117 SMITHTOWN, NY 11787 631.858.2405 © 2023 DOUGLAS ELLIMAN COMMERCIAL OF LI, LLC. ALL MATERIAL PRESENTED HEREIN IS INTENDED FOR INFORMATION PURPOSES ONLY. WHILE THIS INFORMATION IS BELIEVED TO BE CORRECT, IT IS REPRESENTED SUBJECT TO ERRORS, OMISSIONS, CHANGES OR WITHDRAWAL WITHOUT NOTICE. ALL PROPERTY INFORMATION, INCLUDING, BUT NOT LIMITED TO SQUARE FOOTAGE, ROOM COUNT, ZONING IN THE LISTING SHOULD BE VERIFIED BY YOUR OWN ATTORNEY, ARCHITECT OR ZONING EXPERT. IF YOUR PROPERTY IS CURRENTLY LISTED WITH ANOTHER REAL ESTATE BROKER, PLEASE DISREGARD THIS OFFER. IT IS NOT OUR INTENTION TO SOLICIT THE OFFERINGS OF OTHER REAL ESTATE BROKERS. WE COOPERATE WITH THEM FULLY. EQUAL HOUSING OPPORTUNITY.



Office Property For Lease

2280 Grand Ave Baldwin, NY 11510



Offering Summary

Lease Rate:	Price Upon Request
Available SF:	380 - 3,572 SF
Lot Size:	30,239 SF
Number of Units:	29
Year Built:	1972
Traffic Count:	11,748

Property Overview

A prime commercial space available for lease in Baldwin, NY. This modern property features a spacious layout, ideal for a range of business needs. With ample parking and high visibility, it offers excellent accessibility for both customers and employees. The interior boasts versatile, well-lit spaces, perfect for creating a welcoming environment. The property's strategic location ensures proximity to major transportation routes, enhancing its appeal to a wide audience. Don't miss this opportunity to elevate your business in this dynamic and thriving community.

FLOOR PLANS ARE APPROXIMATE

Property Highlights

- Spacious layout conducive to various business needs
- Ample parking for customers and employees
- High visibility in a prime commercial location
- Versatile and well-lit interior spaces

For More Information:

Christopher Pesce



Associate Broker
Douglas Elliman Commercial - Long Island
631.858.2470
christopher.pesce@elliman.com

Kenneth Hester



Licensed Real Estate Salesperson
Douglas Elliman Commercial - Long Island
516.641.0342
kenneth.hester@elliman.com

 **DouglasElliman**
Commercial



WWW.ELLIMANCOMMERCIAL.COM

THE PROPERTY CONTAINED WITHIN THIS DOCUMENT IS BEING EXCLUSIVELY REPRESENTED BY DOUGLAS ELLIMAN REAL ESTATE COMMERCIAL DIVISION, 550 SMITHTOWN BYPASS STE. 117 SMITHTOWN, NY 11787 631.858.2405 © 2023 DOUGLAS ELLIMAN COMMERCIAL OF LI, LLC. ALL MATERIAL PRESENTED HEREIN IS INTENDED FOR INFORMATION PURPOSES ONLY. WHILE THIS INFORMATION IS BELIEVED TO BE CORRECT, IT IS REPRESENTED SUBJECT TO ERRORS, OMISSIONS, CHANGES OR WITHDRAWAL WITHOUT NOTICE. ALL PROPERTY INFORMATION, INCLUDING, BUT NOT LIMITED TO SQUARE FOOTAGE, ROOM COUNT, ZONING IN THE LISTING SHOULD BE VERIFIED BY YOUR OWN ATTORNEY, ARCHITECT OR ZONING EXPERT. IF YOUR PROPERTY IS CURRENTLY LISTED WITH ANOTHER REAL ESTATE BROKER, PLEASE DISREGARD THIS OFFER. IT IS NOT OUR INTENTION TO SOLICIT THE OFFERINGS OF OTHER REAL ESTATE BROKERS. WE COOPERATE WITH THEM FULLY. EQUAL HOUSING OPPORTUNITY.



Office Property For Lease

2280 Grand Ave Baldwin, NY 11510



For More Information:

Christopher Pesce

Associate Broker
Douglas Elliman Commercial - Long Island
631.858.2470
christopher.pesce@elliman.com

Kenneth Hester

Licensed Real Estate Salesperson
Douglas Elliman Commercial - Long Island
516.641.0342
kenneth.hester@elliman.com

Douglas Elliman
Commercial



WWW.ELLIMANCOMMERCIAL.COM

THE PROPERTY CONTAINED WITHIN THIS DOCUMENT IS BEING EXCLUSIVELY REPRESENTED BY DOUGLAS ELLIMAN REAL ESTATE COMMERCIAL DIVISION, 550 SMITHTOWN BYPASS STE. 117 SMITHTOWN, NY 11787 631.858.2405 © 2023 DOUGLAS ELLIMAN COMMERCIAL OF LI, LLC. ALL MATERIAL PRESENTED HEREIN IS INTENDED FOR INFORMATION PURPOSES ONLY. WHILE THIS INFORMATION IS BELIEVED TO BE CORRECT, IT IS REPRESENTED SUBJECT TO ERRORS, OMISSIONS, CHANGES OR WITHDRAWAL WITHOUT NOTICE. ALL PROPERTY INFORMATION, INCLUDING, BUT NOT LIMITED TO SQUARE FOOTAGE, ROOM COUNT, ZONING IN THE LISTING SHOULD BE VERIFIED BY YOUR OWN ATTORNEY, ARCHITECT OR ZONING EXPERT. IF YOUR PROPERTY IS CURRENTLY LISTED WITH ANOTHER REAL ESTATE BROKER, PLEASE DISREGARD THIS OFFER. IT IS NOT OUR INTENTION TO SOLICIT THE OFFERINGS OF OTHER REAL ESTATE BROKERS. WE COOPERATE WITH THEM FULLY. EQUAL HOUSING OPPORTUNITY.



Office Property For Lease

2280 Grand Ave Baldwin, NY 11510



Lease Information

Lease Type:	MG	Lease Term:	Negotiable
Total Space:	380 - 3,572 SF	Lease Rate:	Price Upon Request

Available Spaces

Suite	Tenant	Size (SF)	Lease Type	Lease Rate	Description
Suite 208	Available	3,572 SF	Modified Gross	Price Upon Request	This spacious and versatile commercial property features a highly functional layout ideal for medical practices, professional offices, or co-working setups. The floor plan offers 18 private rooms, three bathrooms, and multiple open areas designed for flexible use.
Suite 209	Available	893 SF	Modified Gross	Price Upon Request	This space consists of 5 private offices and waiting area making it an ideal fit for a dentist office.
Suite 301	Available	1,233 SF	Modified Gross	Price Upon Request	This space consists of Three private office, one conference room, and a waiting area making it an ideal fit for a professional office.

For More Information:



Christopher Pesce

Associate Broker
Douglas Elliman Commercial - Long Island
631.858.2470
christopher.pesce@elliman.com



Kenneth Hester

Licensed Real Estate Salesperson
Douglas Elliman Commercial - Long Island
516.641.0342
kenneth.hester@elliman.com



WWW.ELLIMANCOMMERCIAL.COM

THE PROPERTY CONTAINED WITHIN THIS DOCUMENT IS BEING EXCLUSIVELY REPRESENTED BY DOUGLAS ELLIMAN REAL ESTATE COMMERCIAL DIVISION, 550 SMITHTOWN BYPASS STE. 117 SMITHTOWN, NY 11787 631.858.2405 © 2023 DOUGLAS ELLIMAN COMMERCIAL OF LI, LLC. ALL MATERIAL PRESENTED HEREIN IS INTENDED FOR INFORMATION PURPOSES ONLY. WHILE THIS INFORMATION IS BELIEVED TO BE CORRECT, IT IS REPRESENTED SUBJECT TO ERRORS, OMISSIONS, CHANGES OR WITHDRAWAL WITHOUT NOTICE. ALL PROPERTY INFORMATION, INCLUDING, BUT NOT LIMITED TO SQUARE FOOTAGE, ROOM COUNT, ZONING IN THE LISTING SHOULD BE VERIFIED BY YOUR OWN ATTORNEY, ARCHITECT OR ZONING EXPERT. IF YOUR PROPERTY IS CURRENTLY LISTED WITH ANOTHER REAL ESTATE BROKER, PLEASE DISREGARD THIS OFFER. IT IS NOT OUR INTENTION TO SOLICIT THE OFFERINGS OF OTHER REAL ESTATE BROKERS. WE COOPERATE WITH THEM FULLY. EQUAL HOUSING OPPORTUNITY.



Office Property For Lease

2280 Grand Ave Baldwin, NY 11510



Suite	Tenant	Size (SF)	Lease Type	Lease Rate	Description
Suite 303A	Available	390 SF	Modified Gross	Price Upon Request	This space consists of an open space and a waiting area making it an ideal fit for a professional office.
Suite 309	Available	1,790 SF	Modified Gross	Price Upon Request	This space consists of 5 private offices, a large open pit area, and a break area for the staff making it an ideal fit for a call center.
Suite 312	Available	380 SF		Price Upon Request	This space consists of 2 private offices and a waiting room making it an ideal fit for a professional office.
Suite 314	Available	880 SF	Modified Gross	Price Upon Request	This space consists of 4 private offices with a large open area making it an ideal fit for a professional office
Suite 303	Available	1,150 SF	Modified Gross	Price Upon Request	-
Suite 203	Available	452 SF	Modified Gross	Price Upon Request	One private office and large waiting area

For More Information:



Christopher Pesce

Associate Broker
Douglas Elliman Commercial - Long Island
631.858.2470
christopher.pesce@elliman.com



Kenneth Hester

Licensed Real Estate Salesperson
Douglas Elliman Commercial - Long Island
516.641.0342
kenneth.hester@elliman.com



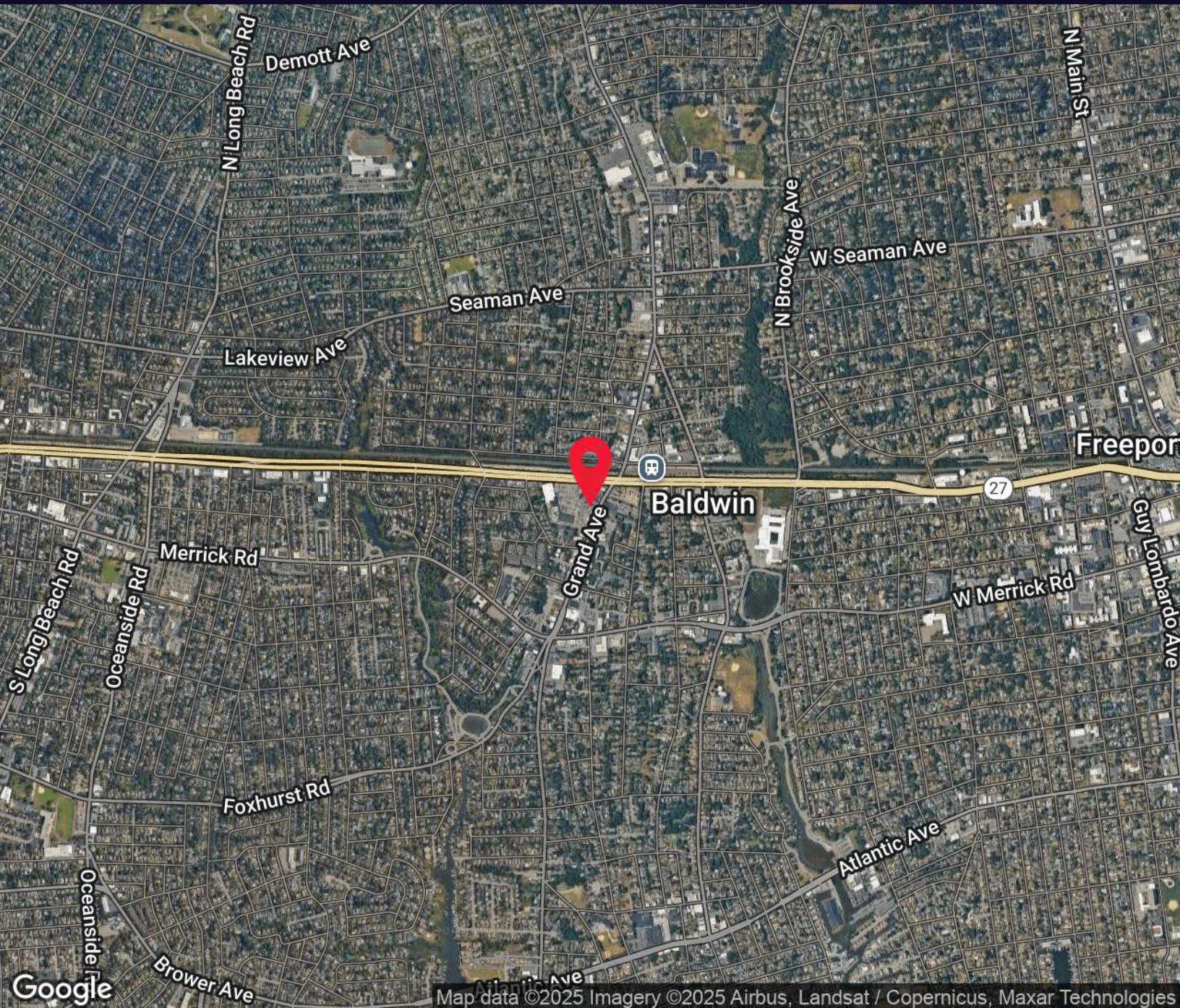
WWW.ELLIMANCOMMERCIAL.COM

THE PROPERTY CONTAINED WITHIN THIS DOCUMENT IS BEING EXCLUSIVELY REPRESENTED BY DOUGLAS ELLIMAN REAL ESTATE COMMERCIAL DIVISION, 550 SMITHTOWN BYPASS STE. 117 SMITHTOWN, NY 11787 631.858.2405 © 2023 DOUGLAS ELLIMAN COMMERCIAL OF LI, LLC. ALL MATERIAL PRESENTED HEREIN IS INTENDED FOR INFORMATION PURPOSES ONLY. WHILE THIS INFORMATION IS BELIEVED TO BE CORRECT, IT IS REPRESENTED SUBJECT TO ERRORS, OMISSIONS, CHANGES OR WITHDRAWAL WITHOUT NOTICE. ALL PROPERTY INFORMATION, INCLUDING, BUT NOT LIMITED TO SQUARE FOOTAGE, ROOM COUNT, ZONING IN THE LISTING SHOULD BE VERIFIED BY YOUR OWN ATTORNEY, ARCHITECT OR ZONING EXPERT. IF YOUR PROPERTY IS CURRENTLY LISTED WITH ANOTHER REAL ESTATE BROKER, PLEASE DISREGARD THIS OFFER. IT IS NOT OUR INTENTION TO SOLICIT THE OFFERINGS OF OTHER REAL ESTATE BROKERS. WE COOPERATE WITH THEM FULLY. EQUAL HOUSING OPPORTUNITY.



Office Property For Lease

2280 Grand Ave Baldwin, NY 11510



For More Information:



Christopher Pesce

Associate Broker
Douglas Elliman Commercial - Long Island
631.858.2470
christopher.pesce@elliman.com



Kenneth Hester

Licensed Real Estate Salesperson
Douglas Elliman Commercial - Long Island
516.641.0342
kenneth.hester@elliman.com

 **DouglasElliman**
Commercial



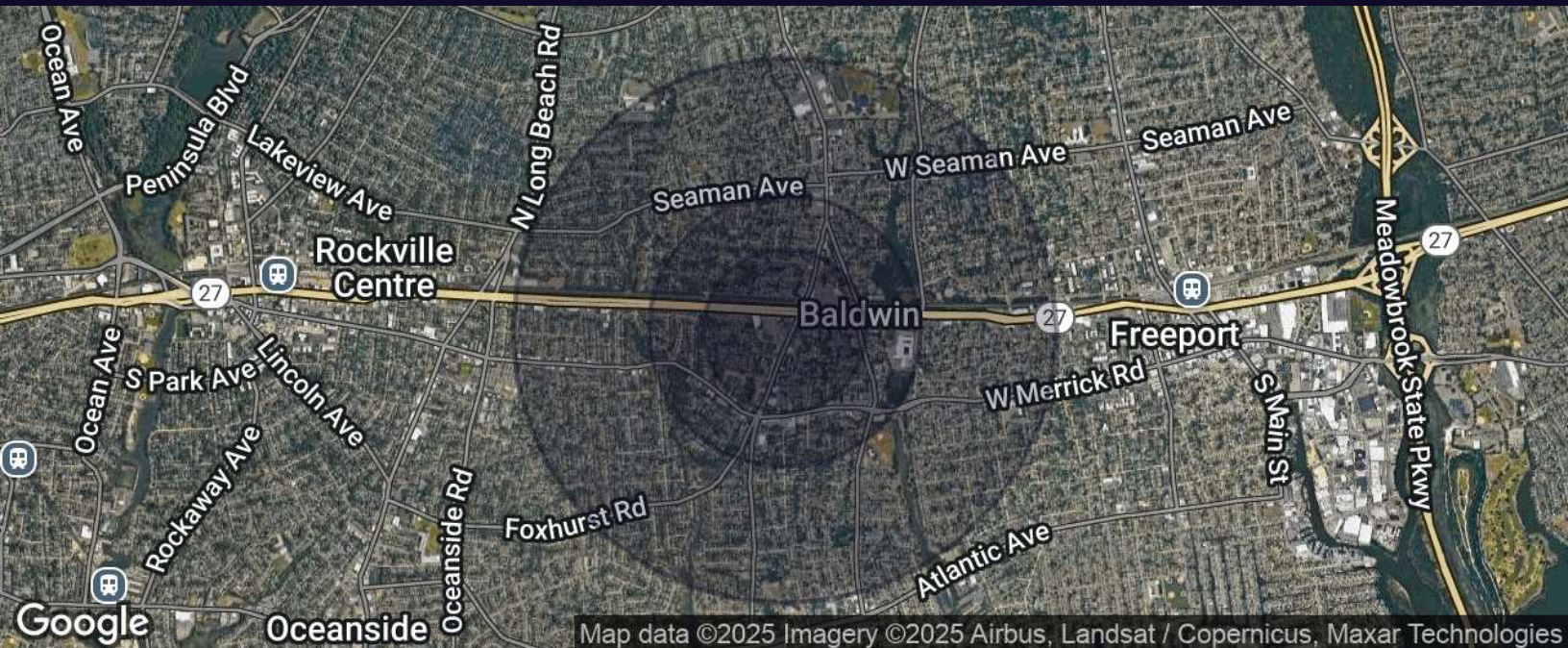
WWW.ELLIMANCOMMERCIAL.COM

THE PROPERTY CONTAINED WITHIN THIS DOCUMENT IS BEING EXCLUSIVELY REPRESENTED BY DOUGLAS ELLIMAN REAL ESTATE COMMERCIAL DIVISION, 550 SMITHTOWN BYPASS STE. 117 SMITHTOWN, NY 11787 631.858.2405 © 2023 DOUGLAS ELLIMAN COMMERCIAL OF LI, LLC. ALL MATERIAL PRESENTED HEREIN IS INTENDED FOR INFORMATION PURPOSES ONLY. WHILE THIS INFORMATION IS BELIEVED TO BE CORRECT, IT IS REPRESENTED SUBJECT TO ERRORS, OMISSIONS, CHANGES OR WITHDRAWAL WITHOUT NOTICE. ALL PROPERTY INFORMATION, INCLUDING, BUT NOT LIMITED TO SQUARE FOOTAGE, ROOM COUNT, ZONING IN THE LISTING SHOULD BE VERIFIED BY YOUR OWN ATTORNEY, ARCHITECT OR ZONING EXPERT. IF YOUR PROPERTY IS CURRENTLY LISTED WITH ANOTHER REAL ESTATE BROKER, PLEASE DISREGARD THIS OFFER. IT IS NOT OUR INTENTION TO SOLICIT THE OFFERINGS OF OTHER REAL ESTATE BROKERS. WE COOPERATE WITH THEM FULLY. EQUAL HOUSING OPPORTUNITY.



Office Property For Lease

2280 Grand Ave Baldwin, NY 11510



Population	0.3 Miles	0.5 Miles	1 Mile
Total Population	2,277	5,877	25,210
Average Age	40	40	41
Average Age (Male)	38	39	40
Average Age (Female)	41	42	43

Households & Income	0.3 Miles	0.5 Miles	1 Mile
Total Households	743	1,847	7,724
# of Persons per HH	3.1	3.2	3.3
Average HH Income	\$145,638	\$158,457	\$182,270
Average House Value	\$559,810	\$585,874	\$613,250

For More Information:



Christopher Pesce

Associate Broker
Douglas Elliman Commercial - Long Island
631.858.2470
christopher.pesce@elliman.com



Kenneth Hester

Licensed Real Estate Salesperson
Douglas Elliman Commercial - Long Island
516.641.0342
kenneth.hester@elliman.com

DouglasElliman
Commercial



WWW.ELLIMANCOMMERCIAL.COM

THE PROPERTY CONTAINED WITHIN THIS DOCUMENT IS BEING EXCLUSIVELY REPRESENTED BY DOUGLAS ELLIMAN REAL ESTATE COMMERCIAL DIVISION, 550 SMITHTOWN BYPASS STE. 117 SMITHTOWN, NY 11787 631.858.2405 © 2023 DOUGLAS ELLIMAN COMMERCIAL OF LI, LLC. ALL MATERIAL PRESENTED HEREIN IS INTENDED FOR INFORMATION PURPOSES ONLY. WHILE THIS INFORMATION IS BELIEVED TO BE CORRECT, IT IS REPRESENTED SUBJECT TO ERRORS, OMISSIONS, CHANGES OR WITHDRAWAL WITHOUT NOTICE. ALL PROPERTY INFORMATION, INCLUDING, BUT NOT LIMITED TO SQUARE FOOTAGE, ROOM COUNT, ZONING IN THE LISTING SHOULD BE VERIFIED BY YOUR OWN ATTORNEY, ARCHITECT OR ZONING EXPERT. IF YOUR PROPERTY IS CURRENTLY LISTED WITH ANOTHER REAL ESTATE BROKER, PLEASE DISREGARD THIS OFFER. IT IS NOT OUR INTENTION TO SOLICIT THE OFFERINGS OF OTHER REAL ESTATE BROKERS. WE COOPERATE WITH THEM FULLY. EQUAL HOUSING OPPORTUNITY.



WE ARE COMMERCIAL REAL ESTATE

Commercial real estate involves more than just property listings. To get the most effective results, you need to partner with a company that has a full complement of services and an in-depth team of professionals to help with all of your needs. Douglas Elliman's team of commercial real estate experts is committed to unrivaled performance standards when working with tenants, investors, purchasers and owners. We represent all major property types including office, industrial, retail, apartment and land. We treat each assignment with commitment and focus, from a single transaction in a local market to national and multi-market assignments. We help negotiate contracts, coordinate construction and provide both property management as well as ongoing advisory service to satisfy your changing real estate needs. Our breadth of market knowledge, unprecedented network and use of innovative technology extend to all types of property transactions.

For More Information:



Christopher Pesce

Associate Broker
631.858.2470
christopher.pesce@elliman.com



Kenneth Hester

Licensed Real Estate Salesperson
516.641.0342
kenneth.hester@elliman.com

Office: 631.858.2405
Fax: 631.543.0851
550 Smithtown Bypass
Smithtown, NY 11787