

# Wayne Plaza

Prime Location Retail Center in Wayne, MI



51863 Schoenherr Road  
Suite 102, Shelby Township,  
MI 48315

Phone: 586-228-2232

Email:

Larry@Hrgproperty.com

Jordan@Hrgproperty.com

## General Information:

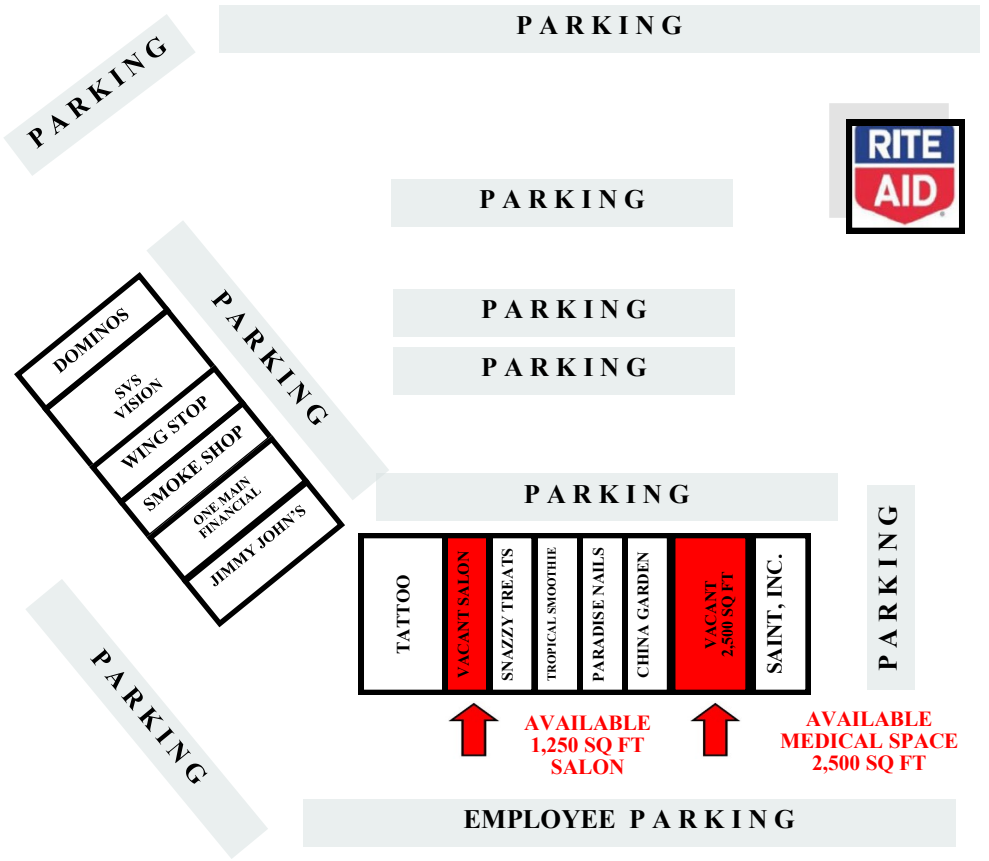
- SITE ADDRESS: 35115-35173 Michigan Ave. Wayne, MI
- Total Structure Size: 25,587 Square Feet
- Busy Shopping & Dining District
- Former medical space available
- Fully built out salon available
- Great Location / High Visibility
- Generous # of Parking Spaces
- HIGH Traffic Volumes
- Current Tenants: Jimmy John's, Domino's, T-Mobile, Wing Stop, SVS Vision, Tropical Smoothie & Others.

# LEASE PLAN-OVERVIEW



51863 Schoenherr Road  
Suite 102, Shelby Township,  
MI 48315

Phone: 586-228-2232  
Email: Larry@Hrgproperty.com  
Jordan@Hrgproperty.com



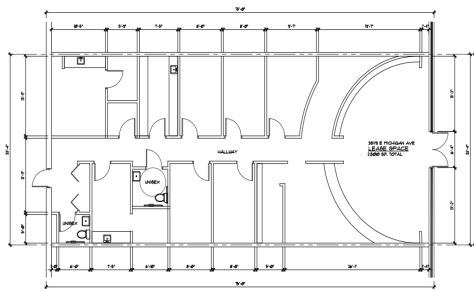
## BUSINESSES IN & AROUND WAYNE PLAZA



# INTERIOR PHOTOS



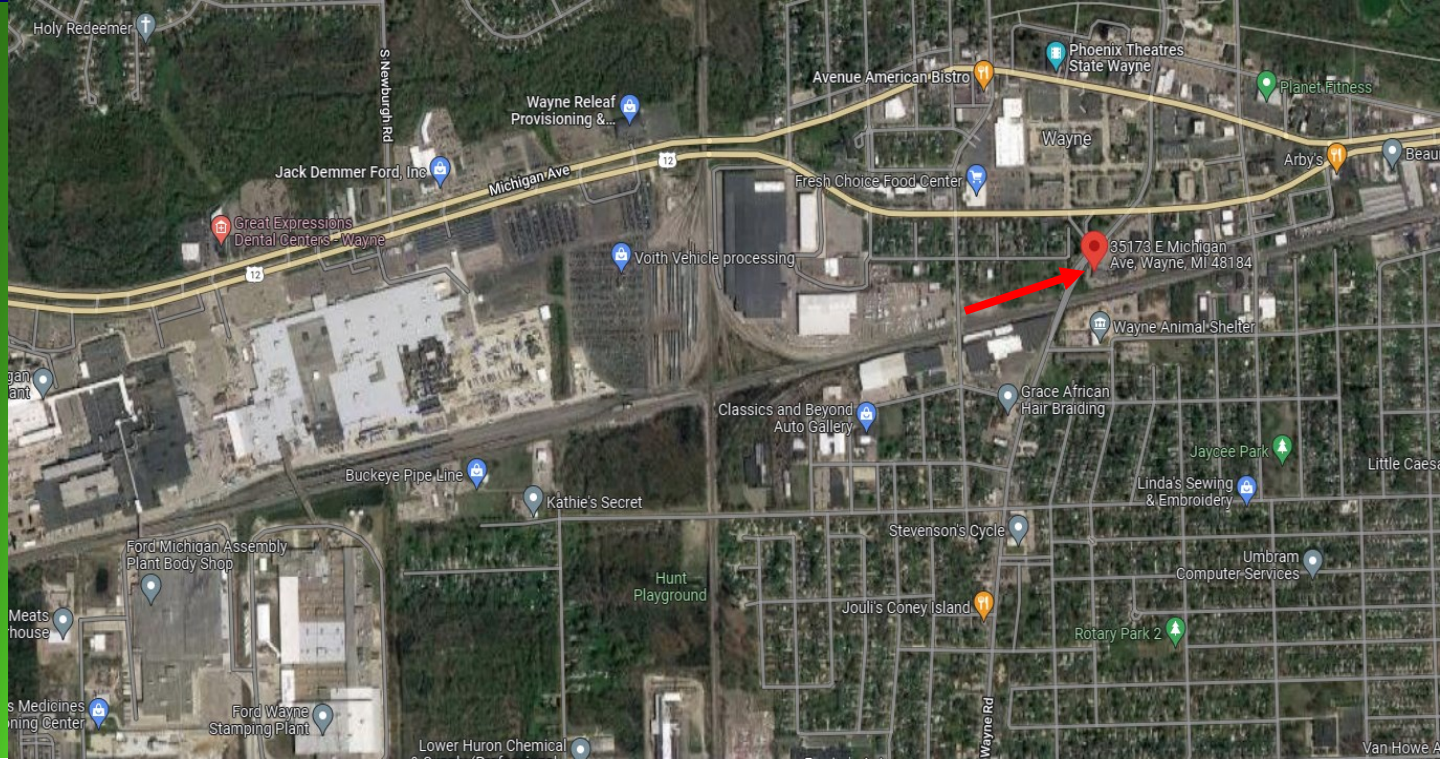
**SALON AVAILABLE**



**MEDICAL SPACE  
AVAILABLE**

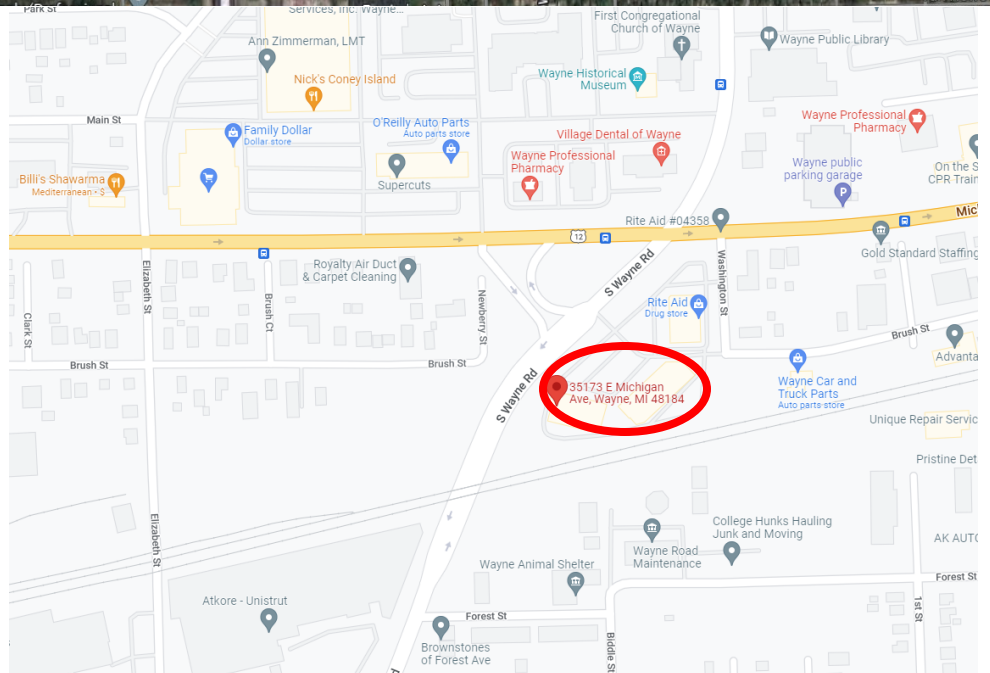


# MAPS



51863 Schoenherr Road  
Suite 102, Shelby Township,  
MI 48315

Phone: 586-228-2232  
Email: [Larry@Hrgproperty.com](mailto:Larry@Hrgproperty.com)  
[Jordan@Hrgproperty.com](mailto:Jordan@Hrgproperty.com)



## OVERVIEW

- FORD Motor Company Assembly Plant is operating just WEST of Downtown Wayne.
- AMAZON Distribution Center including several national retailers & fast food restaurants operating within a 2 miles radius of center.

WEBSITE : [www.HRGproperty.com](http://www.HRGproperty.com)