



**3,848 SF RETAIL
SPACE AVAILABLE**

20540 108TH AVE SE, KENT, WA

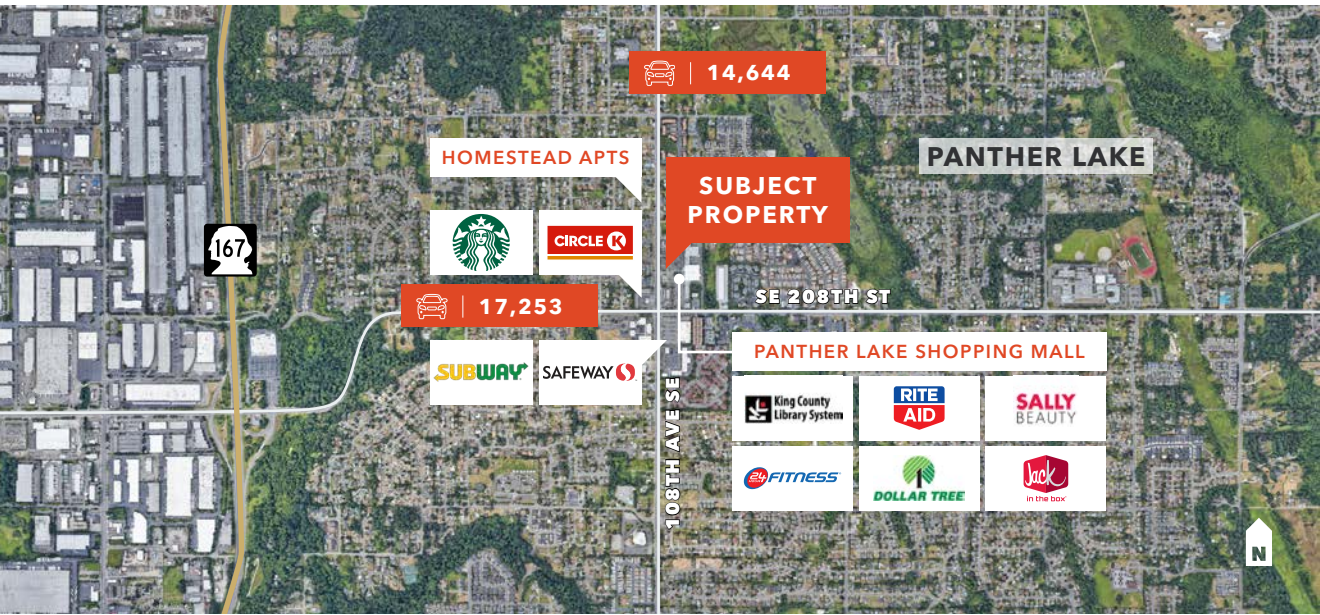
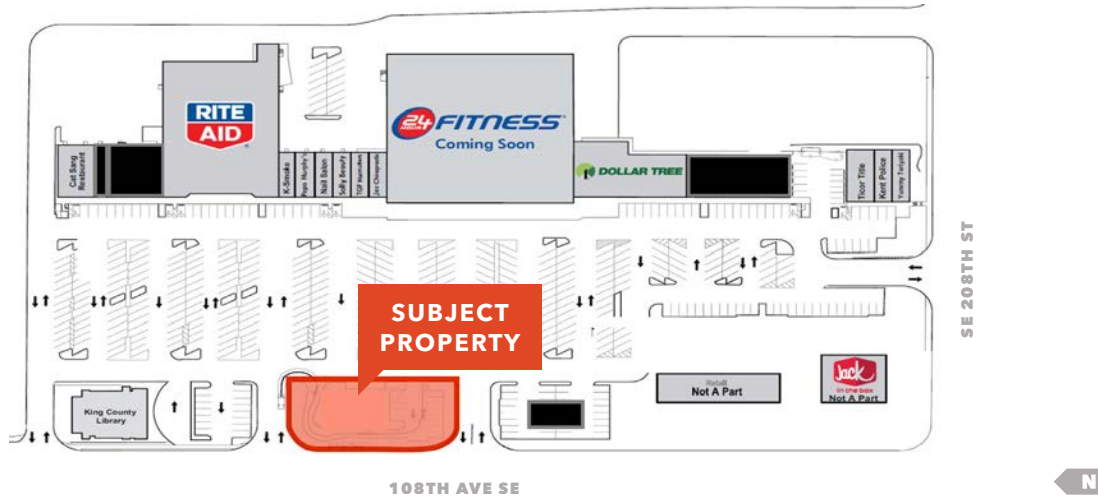
RYAN JONES
425.450.1117
ryan.jones@kidder.com

km Kidder
Mathews

FOR SUBLEASE

3,848 SF Retail Space

20540 108TH AVE SE, KENT, WA



Prime Location on Kent East Hill

3,848 SF retail space available for sublease

EASY access to Hwy-167

HIGH VISIBILITY from 108th Ave SE with excellent signage

DRIVE-THRU available

DEDICATED surface parking

COMBINED traffic count of 31,897 vehicles per day

DEMOGRAPHICS

2020	1 Mile	3 Miles	5 Miles
Population	4,238	35,672	95,965
Median HH Income	\$94,118	\$75,140	\$71,808
Employment	1,331	53,861	125,262

RYAN JONES
425.450.1117
ryan.jones@kidder.com

KIDDER.COM

This information supplied herein is from sources we deem reliable. It is provided without any representation, warranty, or guarantee, expressed or implied as to its accuracy. Prospective Buyer or Tenant should conduct an independent investigation and verification of all matters deemed to be material, including, but not limited to, statements of income and expenses. Consult your attorney, accountant, or other professional advisor.

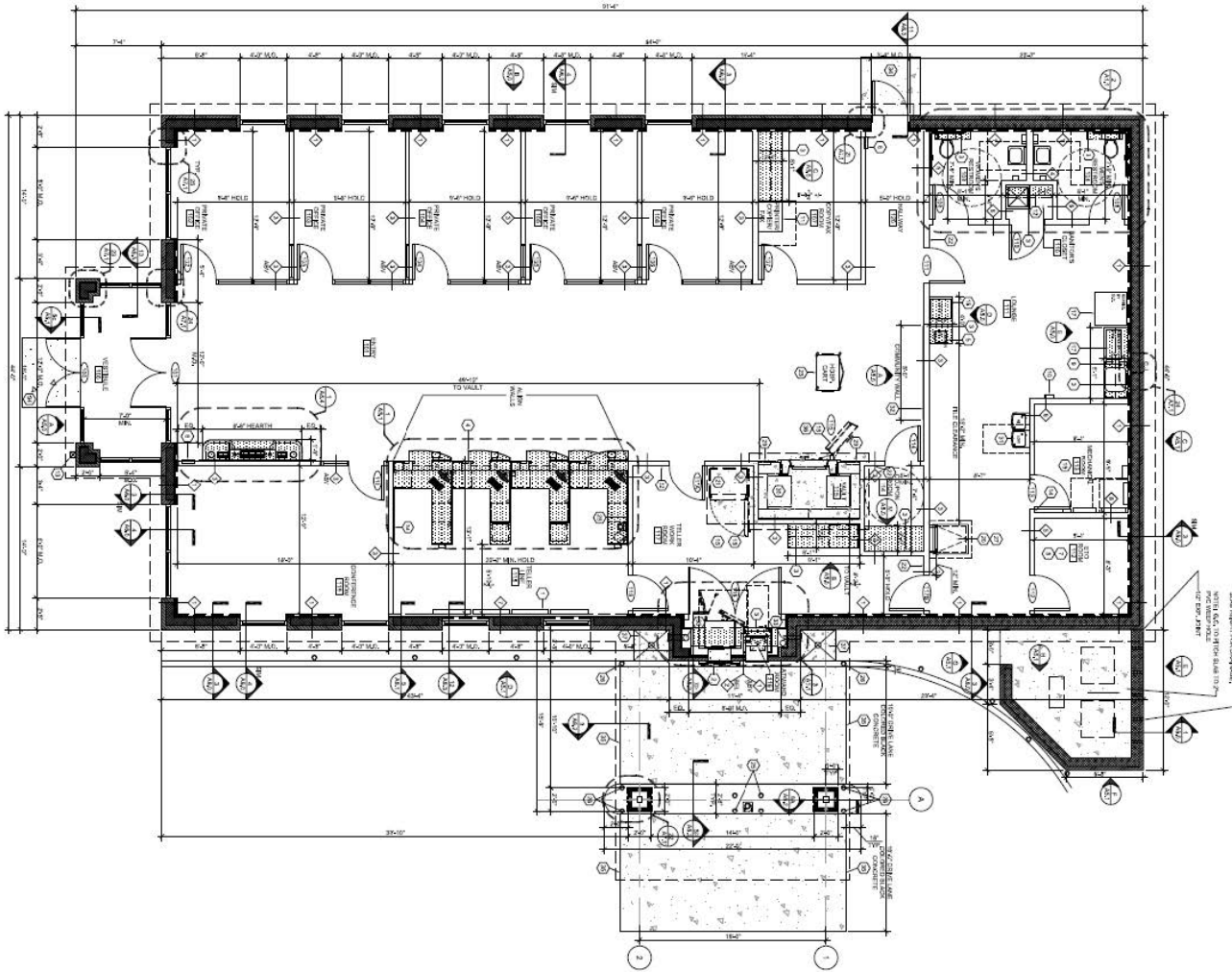


FOR SUBLEASE

3,848 SF Retail Space

20540 108TH AVE SE, KENT, WA

Floor Plan



3,848

SQUARE FEET

\$26.00

PSF - LEASE RATE

RYAN JONES

425.450.1117

ryan.jones@kidder.com

KIDDER.COM

This information supplied herein is from sources we deem reliable. It is provided without any representation, warranty, or guarantee, expressed or implied as to its accuracy. Prospective Buyer or Tenant should conduct an independent investigation and verification of all matters deemed to be material, including, but not limited to, statements of income and expenses. Consult your attorney, accountant, or other professional advisor.

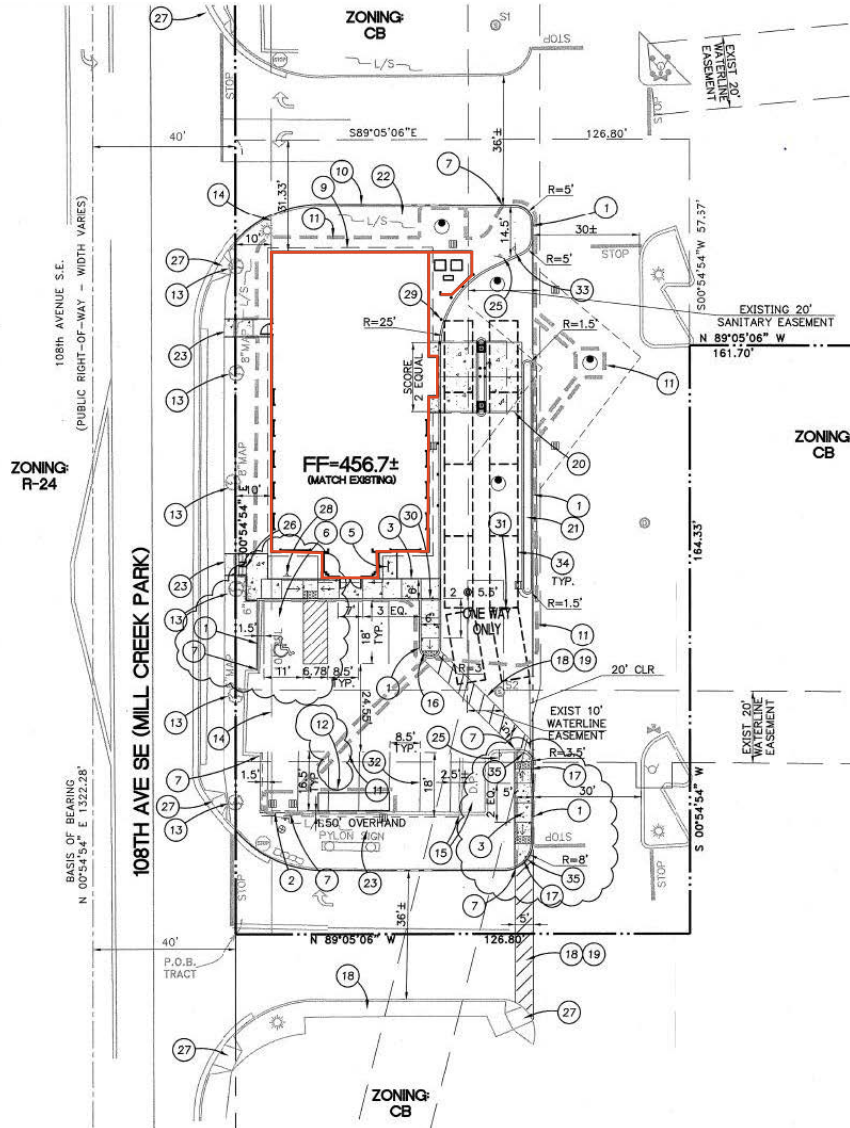


FOR SUBLEASE

3,848 SF Retail Space

20540 108TH AVE SE, KENT, WA

Site Plan



RYAN JONES
425.450.1117
ryan.jones@kidder.com

KIDDER.COM

This information supplied herein is from sources we deem reliable. It is provided without any representation, warranty, or guarantee, expressed or implied as to its accuracy. Prospective Buyer or Tenant should conduct an independent investigation and verification of all matters deemed to be material, including, but not limited to, statements of income and expenses. Consult your attorney, accountant, or other professional advisor.

