

For Lease
±23,149 SF

Cedar Business Park



901 E. Cedar Street, Ontario, CA 91761

Property Features:

- ▶ 2008 CTU Free Standing Building
- ▶ Easy Access off 60 Fwy at Euclid or Grove Exit
- ▶ Private Fenced Yard
- ▶ Zone: Light Industrial (IL)
- ▶ Two-Story Office Space - ±3,000 SF:
 - ±1,500 SF on the 1st Floor
 - ±1,500 SF on the 2nd Floor
- ▶ 24' Clear Height
- ▶ 400 Amps, 277/480 Volt, 3 Phase Power



Edward Lee 李明 憲
edward@ashwill.com
Lic. 01295146
(626) 363-7827

Greg Ashwill
greg@ashwill.com
Lic. 00943299
(626) 363-7828

**Ashwill
Associates**

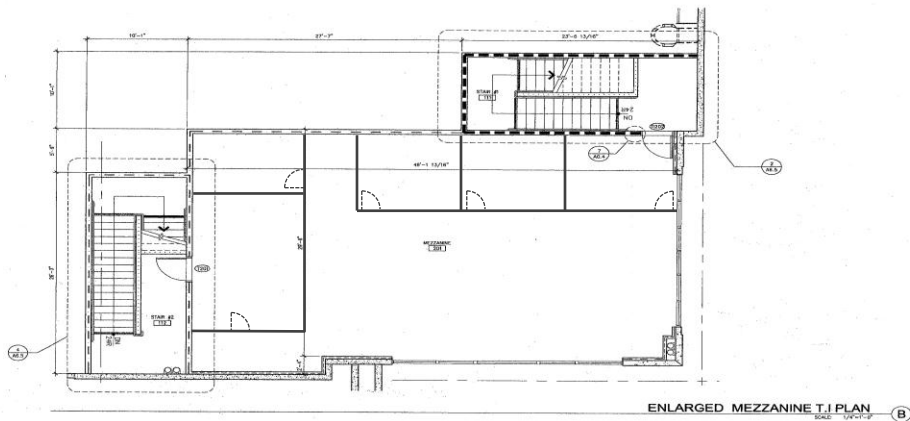
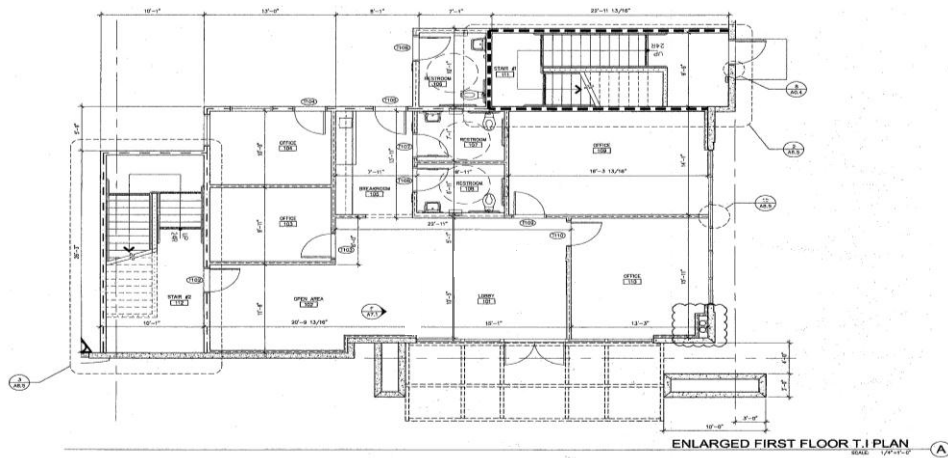
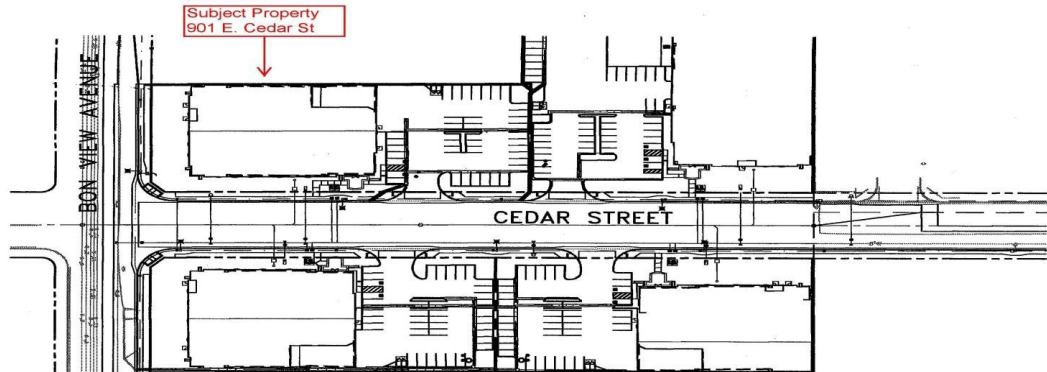
COMMERCIAL REAL ESTATE

21680 Gateway Center Drive, Suite 310
Diamond Bar, CA 91765

www.ashwill.com

For Lease
±23,149 SF

Cedar Business Park



901 E. Cedar Street, Ontario, CA 91761

Edward Lee 李明憲
edward@ashwill.com
Lic. 01295146
(626) 363-7827

Greg Ashwill
greg@ashwill.com
Lic. 00943299
(626) 363-7828

**Ashwill
Associates**

COMMERCIAL REAL ESTATE
21680 Gateway Center Drive, Suite 310
Diamond Bar, CA 91765
www.ashwill.com