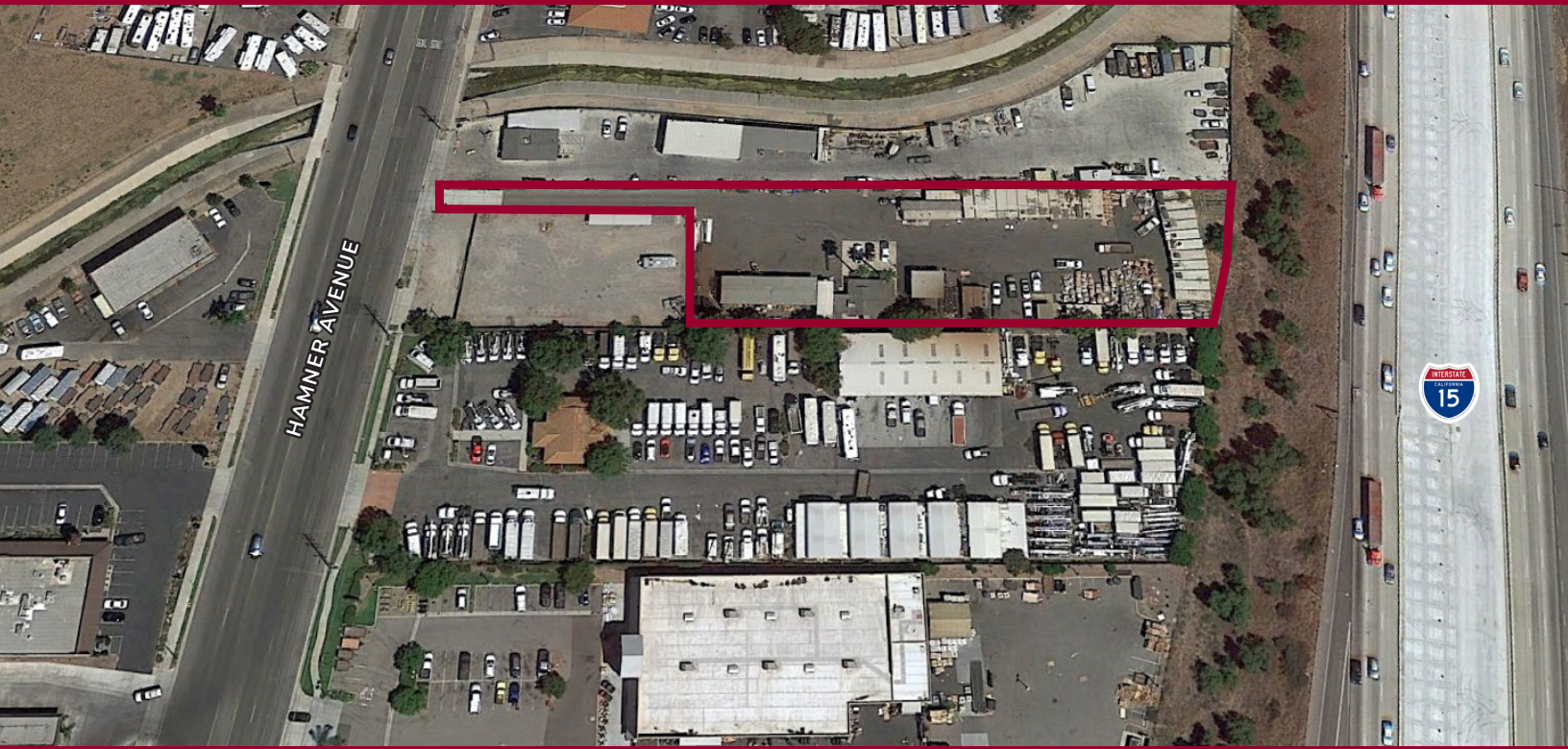


FOR LEASE/SALE
±1.29 ACRE YARD

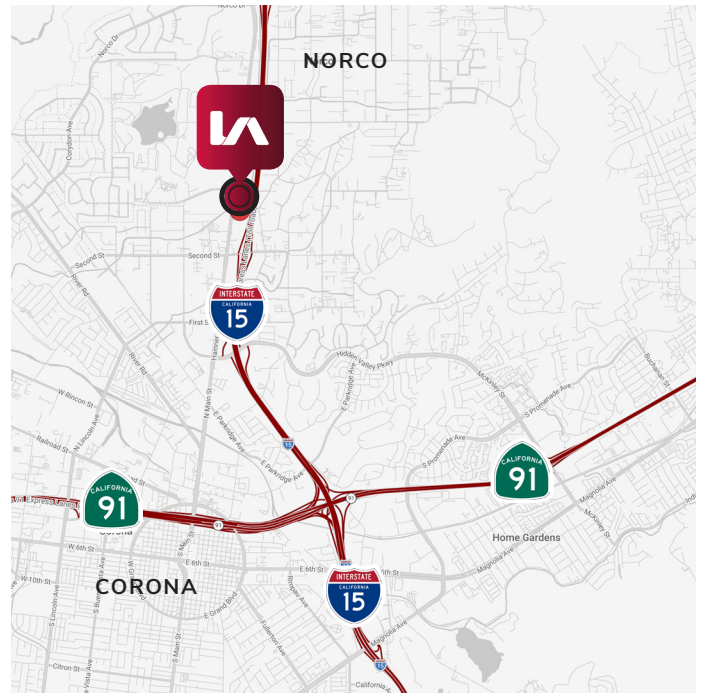
2259 HAMNER AVENUE
NORCO, CA 92860



PROPERTY HIGHLIGHTS

- ±1,000 SF Office/House & ±400 SF Office Trailer
- Great Yard with New Asphalt Paving
- Fully Fenced & Secured
- Separate Offices & Pole Sheds
- Norco Auto Mall Specific Plan Zoning
- Currently Approved for a Plumbing Yard
- Close Proximity to I-15 & CA-91 Freeways

LOCATION MAP



JOHN MULROONEY

jmulrooney@lee-assoc.com

D 909.373.2928

DRE #00839176

MARK WHITE

mwhite@lee-assoc.com

D (909) 373-2727

DRE #01827595

LEE & ASSOCIATES - ONTARIO

3535 Inland Empire Boulevard

Ontario, CA 91764

(909) 989-7771

Corporate ID: 00976995

LEE & ASSOCIATES

COMMERCIAL REAL ESTATE SERVICES

FOR LEASE/SALE
±1.29 ACRE YARD

2259 HAMNER AVENUE
NORCO, CA 92860



JOHN MULROONEY

jmulrooney@lee-assoc.com

D 909.373.2928

DRE #00839176

MARK WHITE

mwhite@lee-assoc.com

D (909) 373-2727

DRE #01827595

LEE & ASSOCIATES - ONTARIO

3535 Inland Empire Boulevard
Ontario, CA 91764
(909) 989-7771

Corporate ID: 00976995



LEE & ASSOCIATES

COMMERCIAL REAL ESTATE SERVICES

lee-associates.com

All information furnished regarding property for sale, rental or financing is from sources deemed reliable, but no warranty or representation is made to the accuracy thereof and same is submitted to errors, omissions, change of price, rental or other conditions prior to sale, lease or financing or withdrawal without notice. No liability of any kind is to be imposed on the broker herein.