

# Doodlebug – Unit A

3630 W. CALIFORNIA AVE., SALT LAKE CITY, UT 84104

## For Lease

### Property Highlights

- 16,300 Total Square Feet
  - 2,601 Office Square Feet
  - 13,699 Warehouse Square Feet
- Three (3) Dock High Doors (9'x10') Equipped with Bumpers
  - Two (2) Equipped with EOD Levelers
- Three (3) 10'x14' Ground Level Doors with Ramps
- 28' Clear Height
- 250 Amps / 480 / 277 3 Phase Power Supply
- Fluorescent Lighting in the Warehouse
- ESFR Fire Suppression System
- Concrete Tilt Construction / Built in 2009
- Gas Forced Air Heat in the Warehouse
- Skylights in the Warehouse
- New LED Lighting in the Office
- New Paint and New Carpet
- Zoned: M-1 (light manufacturing)
- Prime California Avenue Frontage
- Minutes to Salt Lake City International Airport
- Excellent Access to Bangerter Highway, Highway 201, I-80, I-215 and I-15

For information, please contact:

#### Lucas M. Burbank

Executive Managing Director

t 801-578-5522

lburbank@newmarkmw.com

#### Kelsie Akiyama

Senior Associate

t 801-578-5504

kakiyama@newmarkmw.com

#### Chase Omana

Associate

t 801-746-4771

comana@newmarkmw.com

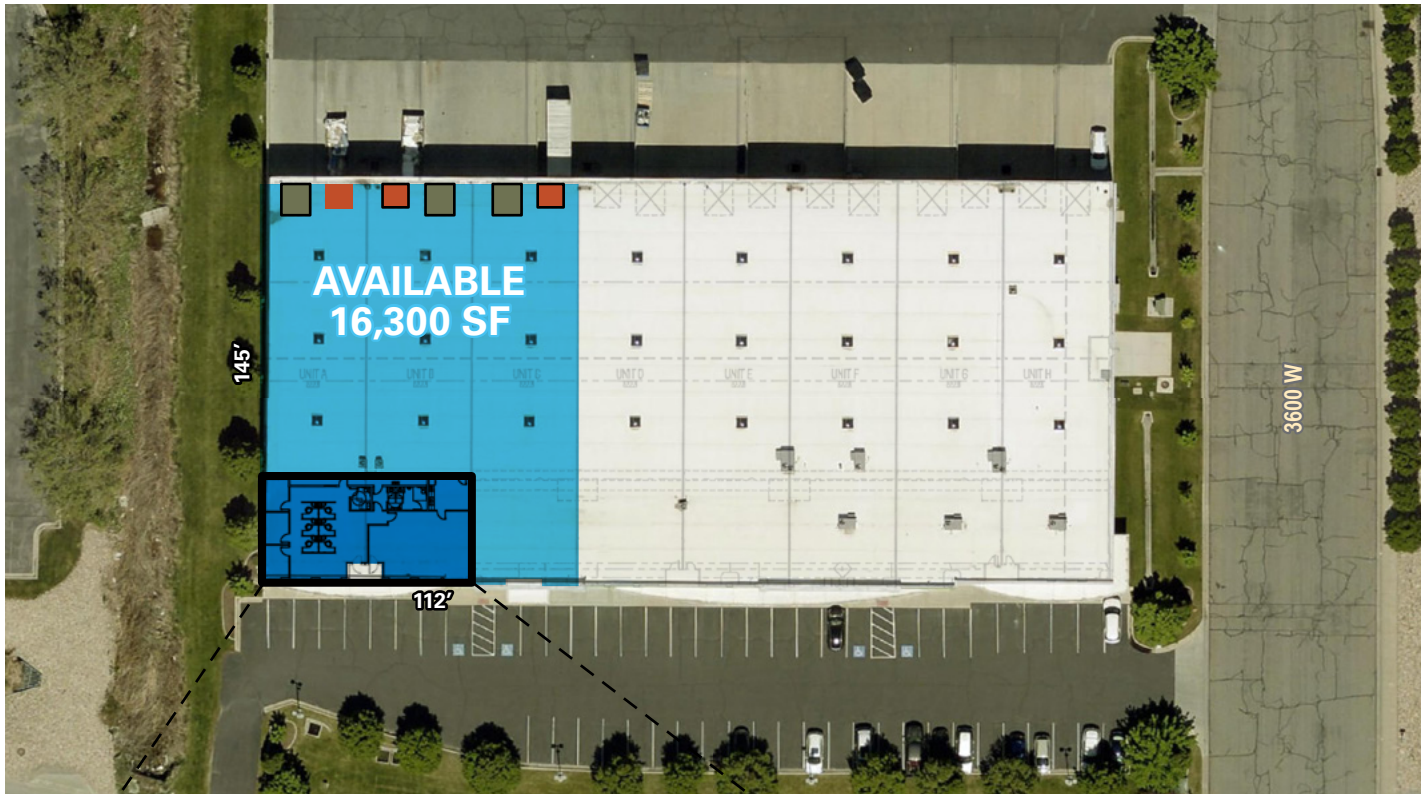
# NEWMARK



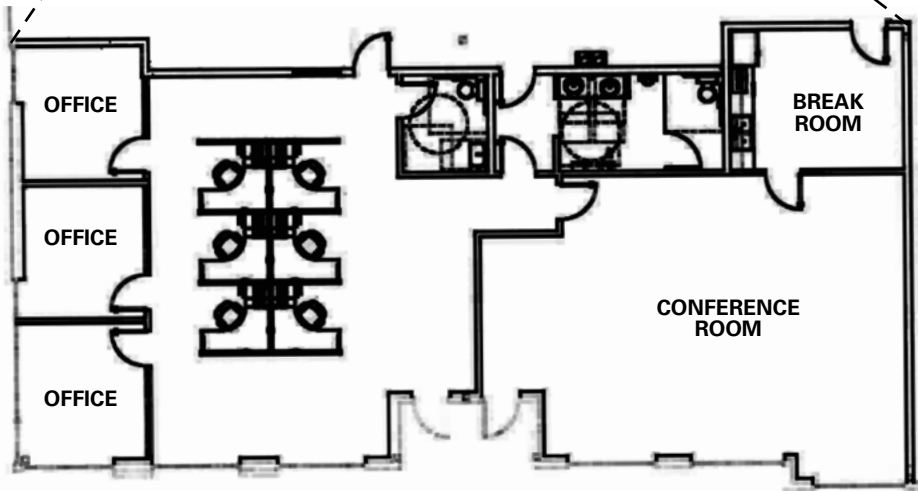
## MOUNTAIN WEST

[newmarkmw.com](http://newmarkmw.com)

The information contained herein has been obtained from sources deemed reliable but has not been verified and no guarantee, warranty or representation, either express or implied, is made with respect to such information. Terms of sale or lease and availability are subject to change or withdrawal without notice.



Office Plan



- Three (3) 10'x14' Ground Level Doors with Ramps
- Two (2) Dock High Doors (9'x10') Equipped with Bumpers and EOD Levelers
- One (1) Dock High Door (9'x10') Equipped with Bumpers

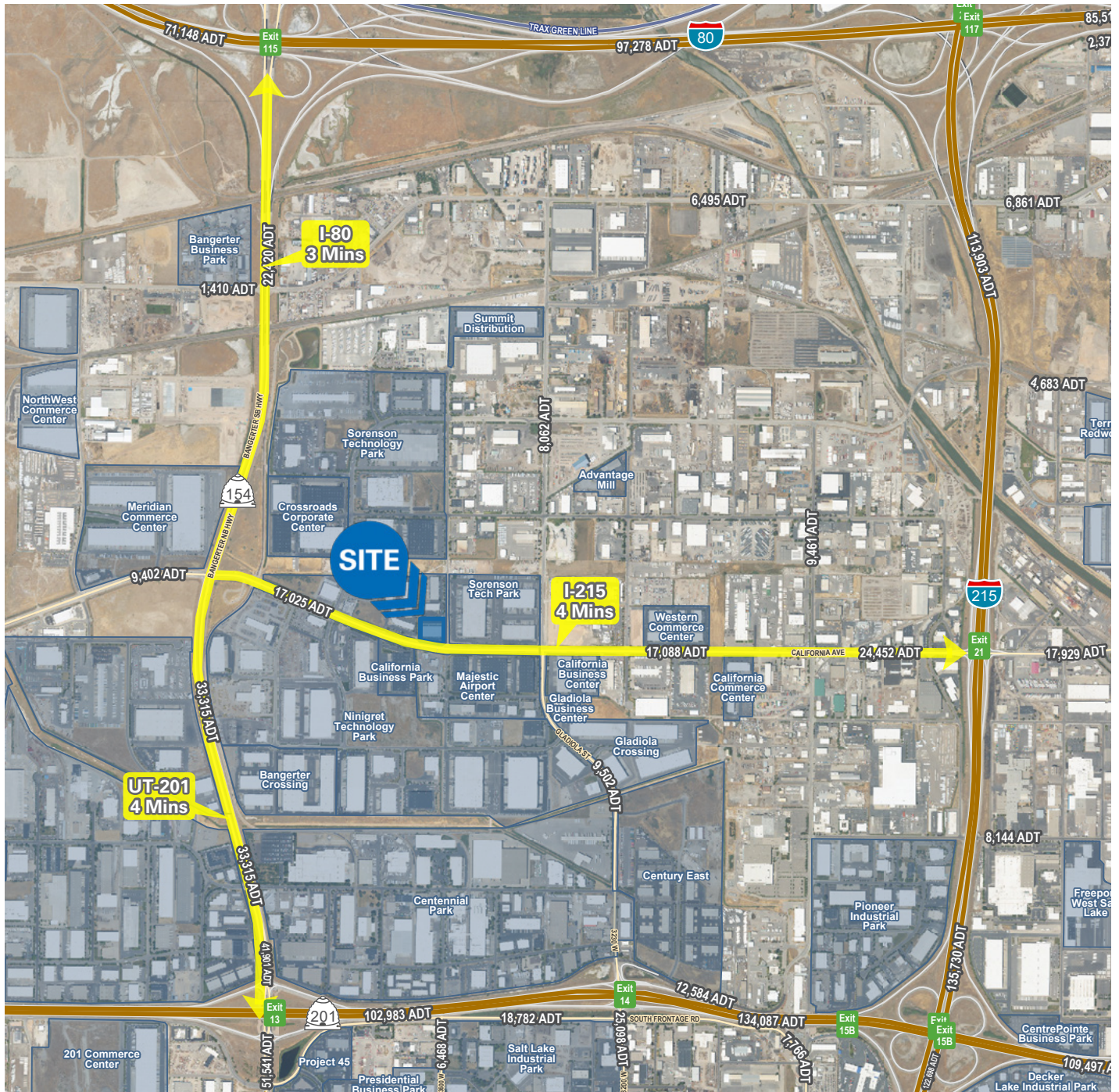
For information, please contact:

**Lucas M. Burbank**  
Executive Managing Director  
t 801-578-5522  
lburbank@newmarkmw.com

**Kelsie Akiyama**  
Senior Associate  
t 801-578-5504  
kakiyama@newmarkmw.com

**Chase Omana**  
Associate  
t 801-746-4771  
comana@newmarkmw.com





For information, please contact:

**Lucas M. Burbank**  
Executive Managing Director  
t 801-578-5522  
lburbank@newmarkmw.com

**Kelsie Akiyama**  
Senior Associate  
t 801-578-5504  
kakiyama@newmarkmw.com

**Chase Omana**  
Associate  
t 801-746-4771  
comana@newmarkmw.com



[newmarkmw.com](http://newmarkmw.com)

The information contained herein has been obtained from sources deemed reliable but has not been verified and no guarantee, warranty or representation, either express or implied, is made with respect to such information. Terms of sale or lease and availability are subject to change or withdrawal without notice.