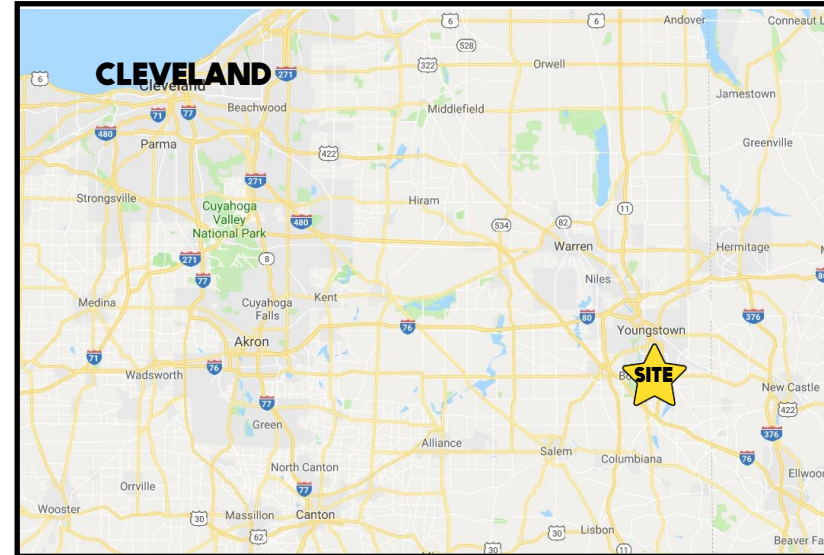


LOCATION

Boardman Poland Rd, Boardman, OH 44512



HIGHLIGHTS

- Owner/operators must see!! Established restaurant in Boardman/Poland, OH
- Turnkey multi-faceted opportunity: restaurant, bar, wine shop, and banquet rooms
- Well positioned along US 224 @South Ave/ Tiffany Blvd/I680
- Attractive assignable lease with options

TRAFFIC

Boardman Poland Rd = 32,730 VPD
South Ave = 19,553 VPD
Tiffany Blvd = 12,353 VPD

CONTACT

DON THOMAS

501.269.3827

dthomas@platzrealtygroup.com

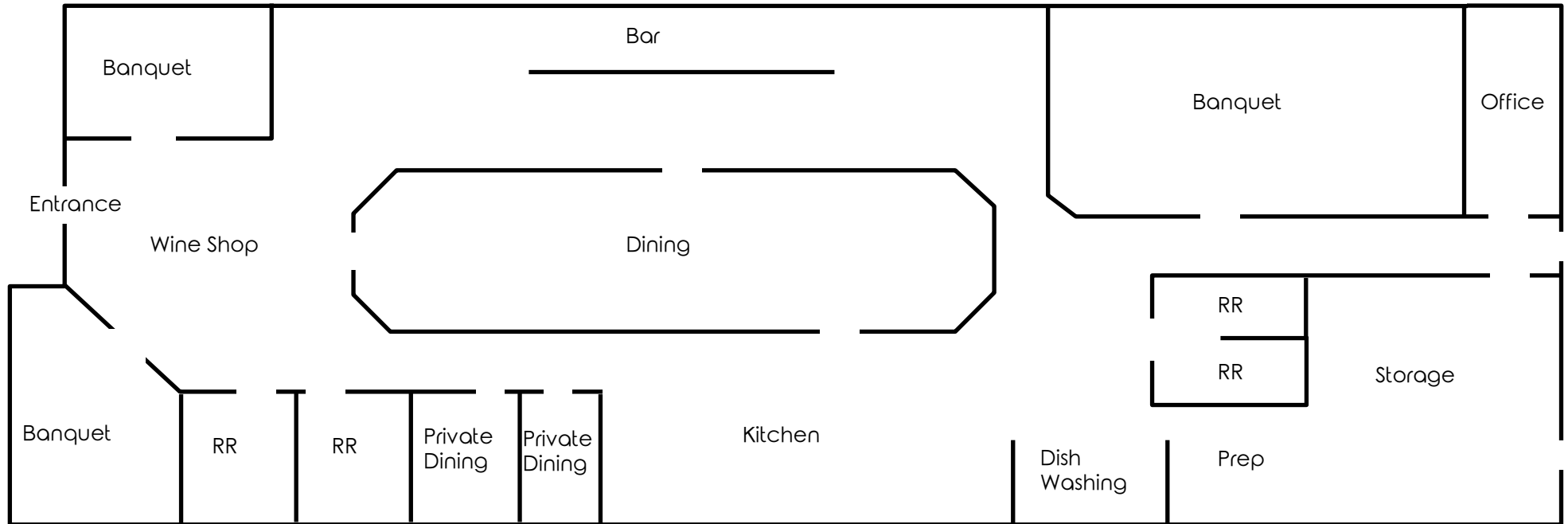
Office: 330.757.4889 | Fax: 330.294.5622 | 3830 Starr Centre Dr, Suite 2, Canfield, OH 44406

www.PLATZREALTYGROUP.com



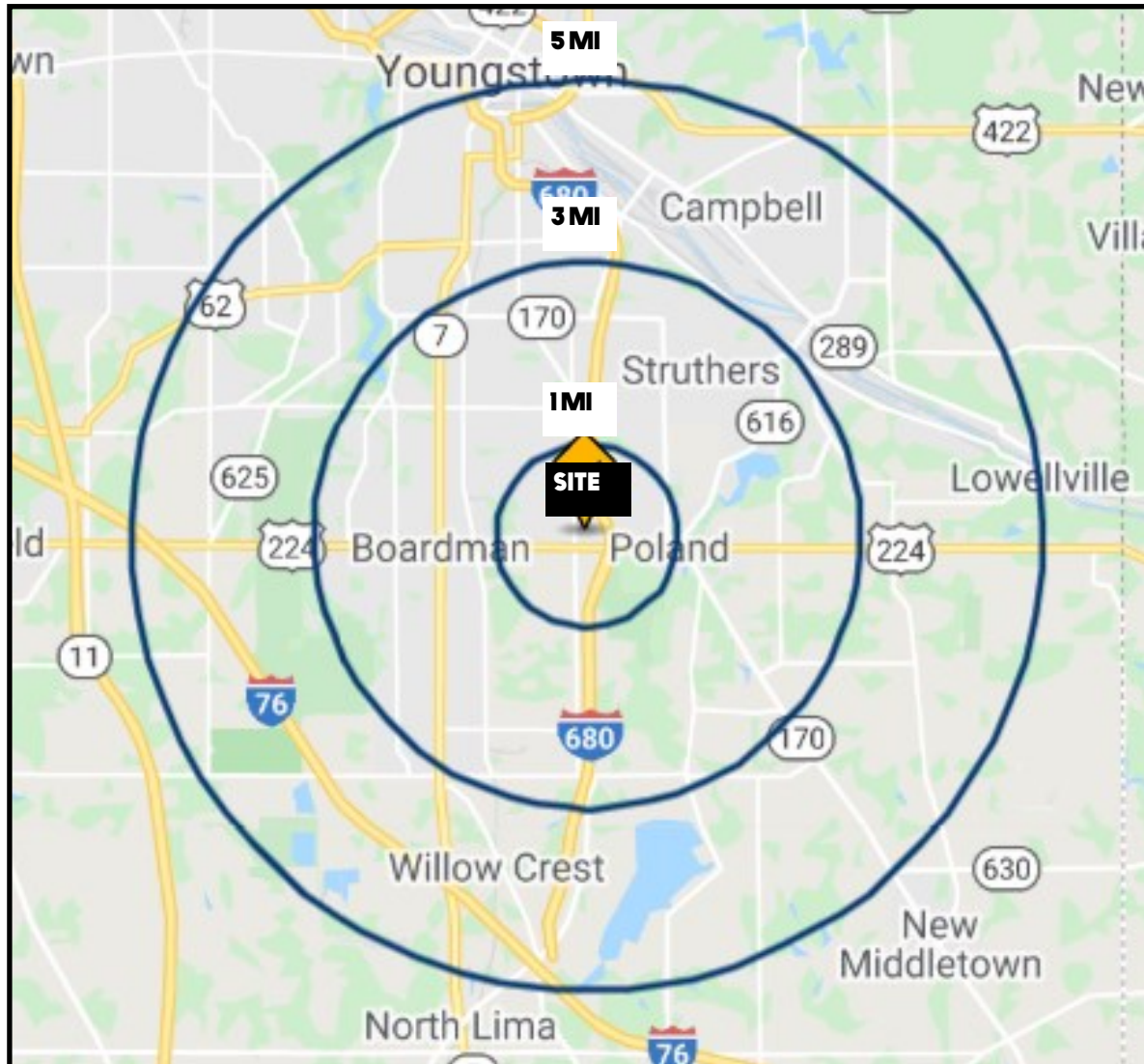
Office: 330.757.4889 | Fax: 330.294.5622 | 3830 Starr Centre Dr, Suite 2, Canfield, OH 44406

www.PLATZREALTYGROUP.com



Office: 330.757.4889 | Fax: 330.294.5622 | 3830 Starr Centre Dr, Suite 2, Canfield, OH 44406

www.PLATZREALTYGROUP.com



DEMOGRAPHICS	1 MI	3 MI	5 MI
POPULATION	5,243	61,731	111,180
HOUSEHOLDS	2,239	26,142	46,878
AVERAGE AGE	44	42	42
MEDIAN HH INCOME	\$72,832	\$55,752	\$49,144

SITE INFORMATION

LOCATION	Boardman Township; Mahoning County
CURRENT USE	Restaurant / Bar / Banquet Hall / Wine Shop
SIZE	15,264 SF
YEAR RENOVATED	2008
SIGNAGE	Pylon and building
LEASE	Attractive assignable lease with options
PRICE	\$2,999,999 - includes business, liquor license, bar, & restaurant assets REDUCED \$2,849,999

Office: 330.757.4889 | Fax: 330.294.5622 | 3830 Starr Centre Dr, Suite 2, Canfield, OH 44406

www.PLATZREALTYGROUP.com