

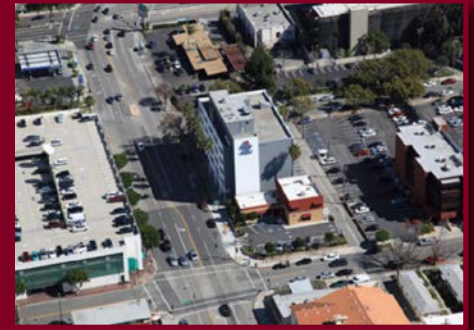
# TOLUCA LAKE CENTER

## 3808 W. RIVERSIDE DRIVE

### BURBANK, CA

# Medical

## Space For Lease



**AVAILABLE:** Suite 200 - 2,347 RSF (Available 5/1/26)  
Suite 503 - 847 RSF (Available Now)

**RENTAL RATE:** Negotiable, FSG

- BUILDING FEATURES:**
- ▶ 3/1,000 Parking at Current Building Rates
  - ▶ Building Renovations Complete
  - ▶ Close to St. Joseph's Hospital & Studios
  - ▶ Many Amenities Within Walking Distance
  - ▶ Easy Access to 134 Freeway

**FOR LEASING INQUIRIES CONTACT:**

**JENNIFER DONALDSON**  
818.933.0347  
LICENSE ID #01317737  
jdonaldson@lee-re.com

Lee & Associates® - LA North/Ventura, Inc.  
CORPORATE ID #01191898  
A Member of the Lee & Associates Group of Companies

15060 Ventura Blvd, Suite 100  
Sherman Oaks, CA 91403  
P: 818-986-9800 F: 818-783-9260  
www.leelanorth.com

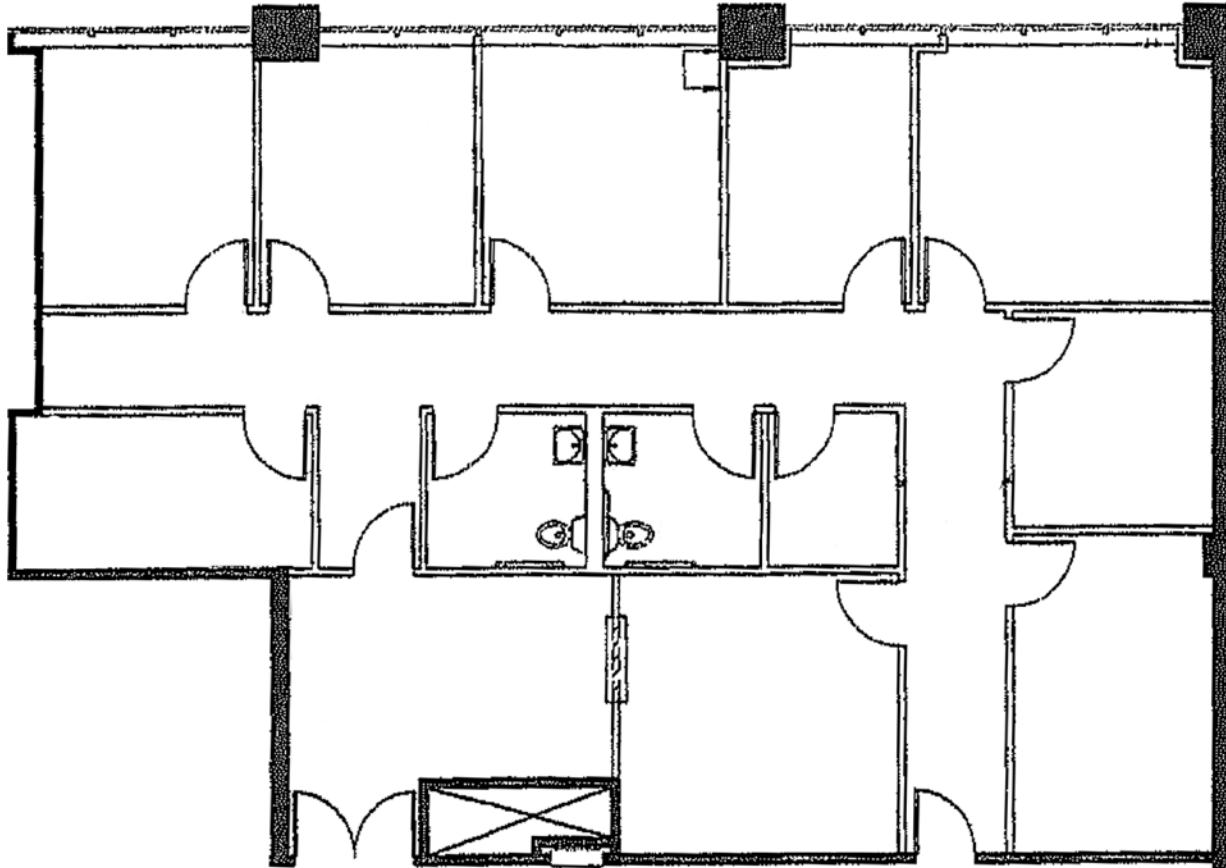
No warranty or representation is made to the accuracy of the foregoing information. Terms of sale or lease and availability are subject to change or withdrawal without notice.

**LEE & ASSOCIATES**  
COMMERCIAL REAL ESTATE SERVICES

**TOLUCA LAKE CENTER**  
**3808 W. RIVERSIDE DRIVE**  
**BURBANK, CA**

**Medical**  
Space For Lease

**SUITE 200 - 2,347 RSF**



**FOR LEASING INQUIRIES CONTACT:**

**JENNIFER DONALDSON**  
818.933.0347  
LICENSE ID #01317737  
jdonaldson@lee-re.com

Lee & Associates® - LA North/Ventura, Inc.  
CORPORATE ID #01191898  
*A Member of the Lee & Associates Group of Companies*

15060 Ventura Blvd, Suite 100  
Sherman Oaks, CA 91403  
P: 818-986-9800 F: 818-783-9260  
www.leelanorth.com

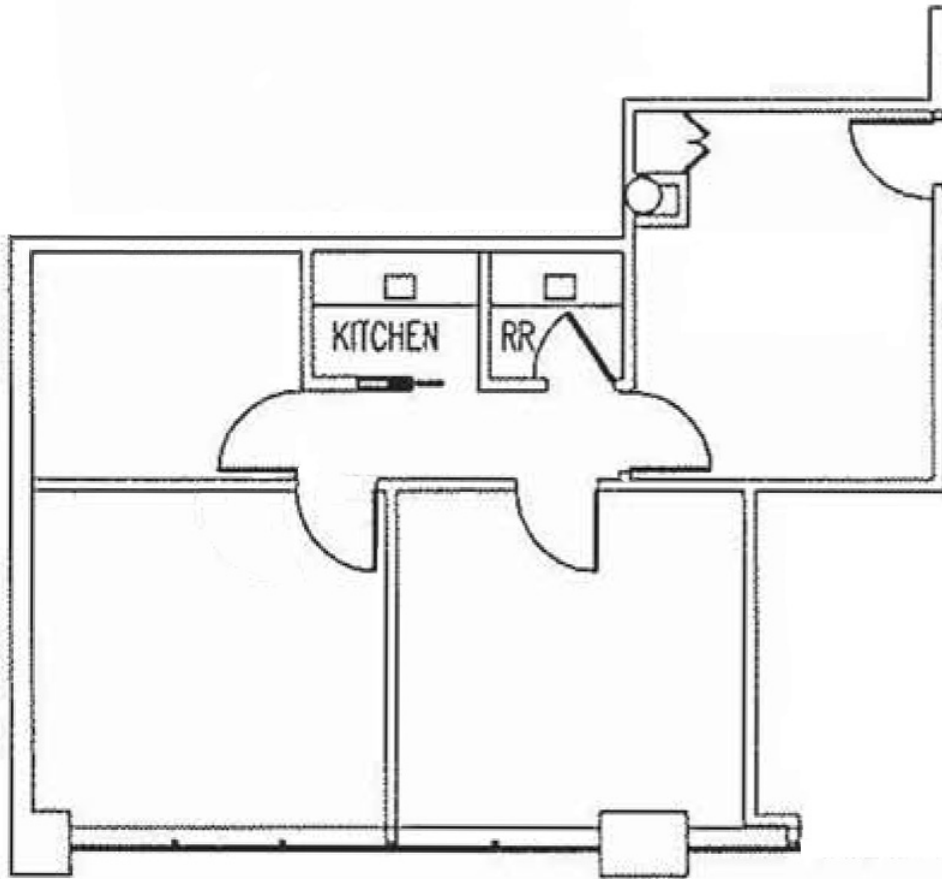
No warranty or representation is made to the accuracy of the foregoing information. Terms of sale or lease and availability are subject to change or withdrawal without notice.

**LEE & ASSOCIATES**  
COMMERCIAL REAL ESTATE SERVICES

**TOLUCA LAKE CENTER**  
**3808 W. RIVERSIDE DRIVE**  
**BURBANK, CA**

**Medical**  
Space For Lease

**SUITE 503 - ±847 RSF**



**FOR LEASING INQUIRIES CONTACT:**

**JENNIFER DONALDSON**  
818.933.0347  
LICENSE ID #01317737  
jdonaldson@lee-re.com

Lee & Associates® - LA North/Ventura, Inc.  
CORPORATE ID #01191898  
*A Member of the Lee & Associates Group of Companies*

15060 Ventura Blvd, Suite 100  
Sherman Oaks, CA 91403  
P: 818-986-9800 F: 818-783-9260  
www.leelanorth.com

**No warranty or representation is made to the accuracy of the foregoing information. Terms of sale or lease and availability are subject to change or withdrawal without notice.**

**LEE & ASSOCIATES**  
COMMERCIAL REAL ESTATE SERVICES

# TOLUCA LAKE CENTER

## 3808 W. RIVERSIDE DRIVE

### BURBANK, CA

# Medical

## Space For Lease



FOR LEASING INQUIRIES CONTACT:

JENNIFER DONALDSON  
818.933.0347  
LICENSE ID #01317737  
jdonaldson@lee-re.com

Lee & Associates® - LA North/Ventura, Inc.  
CORPORATE ID #01191898  
A Member of the Lee & Associates Group of Companies

15060 Ventura Blvd, Suite 100  
Sherman Oaks, CA 91403  
P: 818-986-9800 F: 818-783-9260  
www.leelanorth.com

No warranty or representation is made to the accuracy of the foregoing information. Terms of sale or lease and availability are subject to change or withdrawal without notice.

 LEE &  
ASSOCIATES  
COMMERCIAL REAL ESTATE SERVICES