



QUEEN CITY SQUARE

**CONFIDENTIAL - TENANT OPERATING!
PLEASE DO NOT DISTURB!**

FOR LEASE
FIRST FLOOR SALON/RETAIL SPACE



PROPERTY HIGHLIGHTS

- Queen City Square is a state-of-the-art office center located in the heart of downtown Cincinnati's business district.
- 800 SF turn-key salon in immaculate condition
- **Tenant operating - Please do not disturb!**
- (5) total work stations, (2) private with wash sinks
- Also includes reception desk and seating area
- Off-site, common restrooms in place, not part of GLA
- Interior building signage available
- Salon space available in the prominent office building in the central business district with thousands of employees daily and immediate access to Atrium Office Towers and First Financial Center

NEIGHBORING TENANTS

Wild Eggs, Kidd Coffee, Bakes Place, The Market at Queen City Square, KeyBank Retail Branch, Walgreen's, Skyline and Anderson's Deli

AVAILABLE SF

800 SF

LEASE RATE

Call for Pricing



NEIGHBORHOOD DEMOGRAPHICS



POPULATION



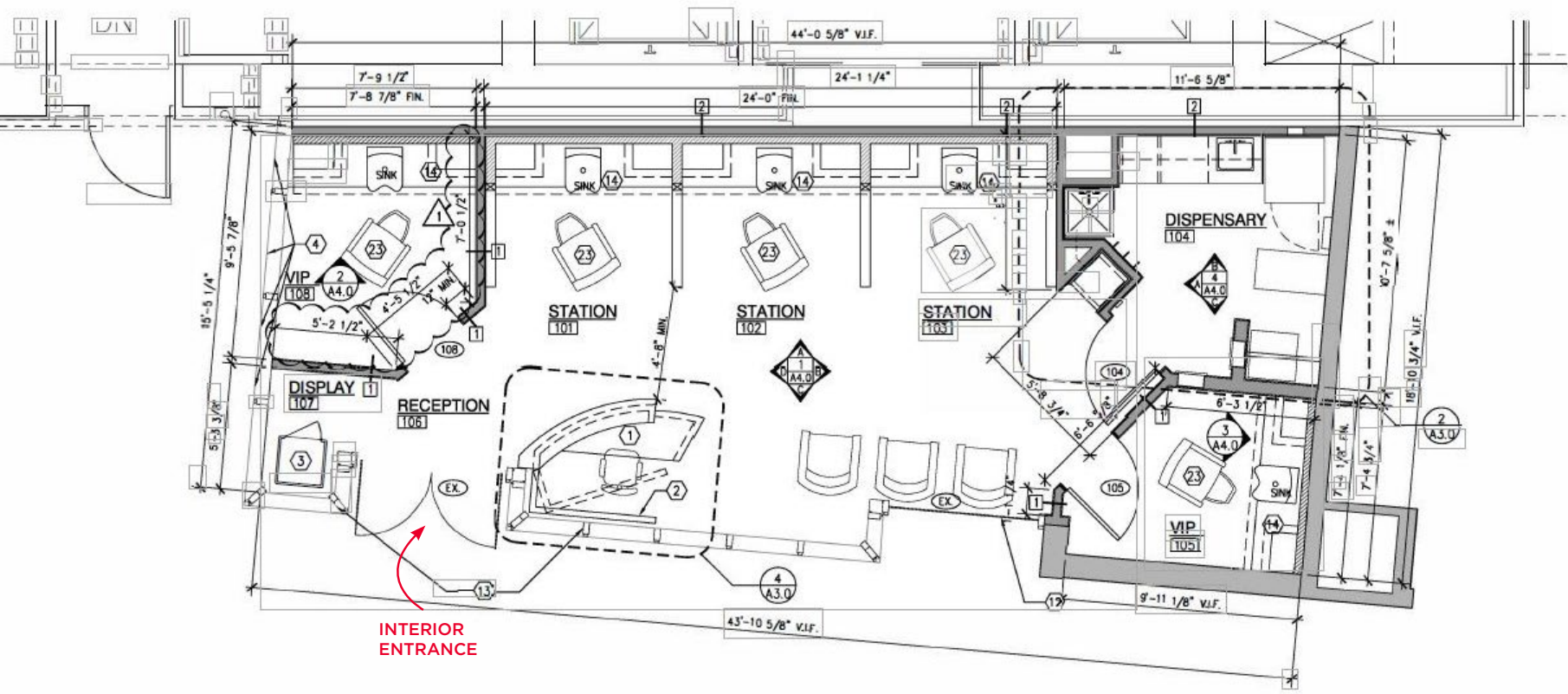
AVERAGE
HOUSEHOLD INCOME



AVG DAYTIME
POPULATION

	POPULATION	AVERAGE HOUSEHOLD INCOME	AVG DAYTIME POPULATION
1 Mile	17,013	\$109,344	68,542
3 Miles	135,868	\$71,190	182,096
5 Miles	292,804	\$79,285	285,777

FLOOR PLAN



← ← THIRD STREET ← ←





RESTAURANTS & HOSPITALITY

IN THE **NEIGHBORHOOD**

Numerous retail stores, private clubs, shops, hotels and parks are located within close proximity to the building. The Queen City Club, University Club and the award-winning Residence Inn Cincinnati Downtown/The Phelps and Lytle Park Hotel/Autograph Collection all call Queen City Square neighbors!





QUEEN CITY SQUARE

FOR MORE INFORMATION, CONTACT:

TERRY OHNMEIS

Director

+1 513 763 3059

terry.ohnmeis@cushwake.com

ROB MURPHY

Director

+1 513 763 3033

rob.p.murphy@cushwake.com



**CUSHMAN &
WAKEFIELD**