



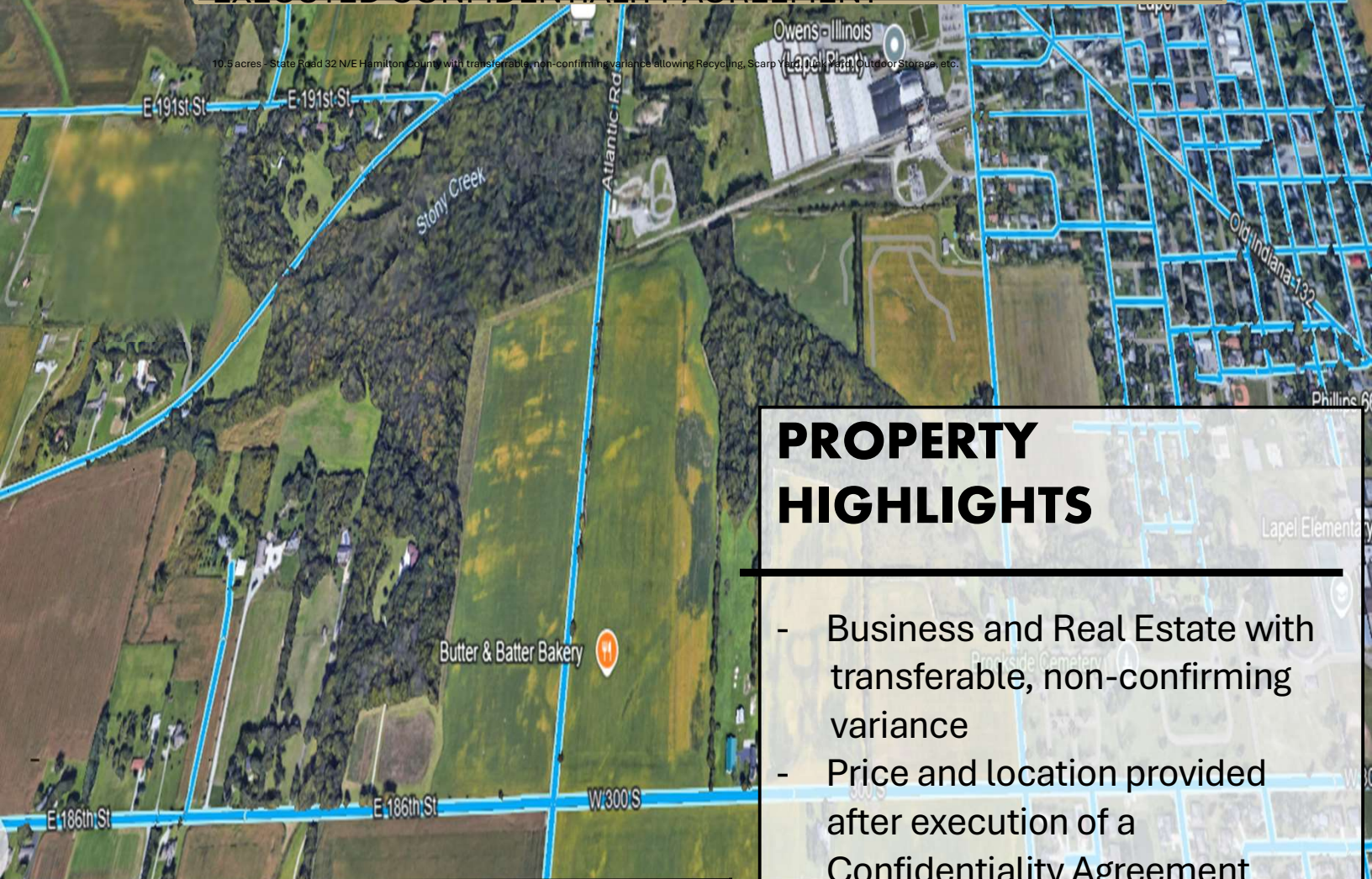
**COMMERCIAL**

Getoo Café + Market

Lapel High School

**NORTHEAST HAMILTON COUNTY:**

**BUSINESS AND REAL ESTATE ON OVER 10.5 ACRES WITH TRANSFERRABLE, NON-CONFORMING VARIANCE ALLOWING SCRAP YARD, AUTO RECYCLING, ETC.**



**PROPERTY HIGHLIGHTS**

- Business and Real Estate with transferable, non-conforming variance
- Price and location provided after execution of a Confidentiality Agreement
- 10.5 acres
- **Variance allows for scrap yard, outdoor storage and parking, auto recycling & more**



Contact:

**317-703-5880**

**SCOTT SCHULER**

[SSchuler@c21cre.com](mailto:SSchuler@c21cre.com)