

# PARKRIDGE FOUR

10375 Park Meadows Drive, Lone Tree, CO 80124



## PROPERTY HIGHLIGHTS

- ON-SITE DELI, TRAINING/CONFERENCE CENTER, FITNESS CENTER
- INCREDIBLE MOUNTAIN VIEWS
- LEED GOLD
- EASY ACCESS TO I-25 AND C-470
- WALK TO LINCOLN LIGHT RAIL STATION
- EXECUTIVE COVERED PARKING
- 4.4:1,000 PARKING
- FITWEL RATED



For leasing information please contact:

Matt Smith | 303.996.8460  
msmith@premisescommercial.com

**PREMISES**  
PREMISES COMMERCIAL REAL ESTATE LLC  
WWW.PREMISESCOMMERCIAL.COM

# PARKRIDGE FOUR

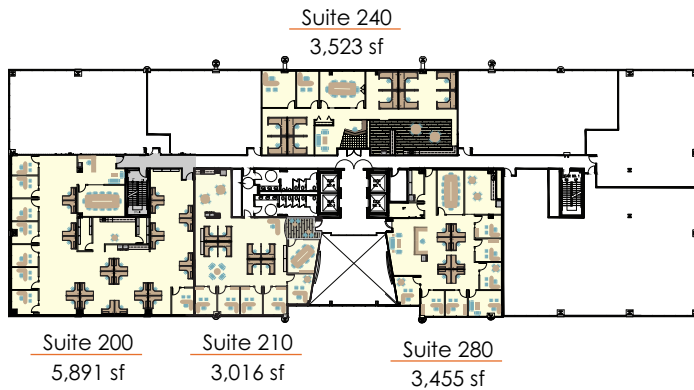
10375 Park Meadows Drive, Lone Tree, CO 80124

## AVAILABLE SUITES

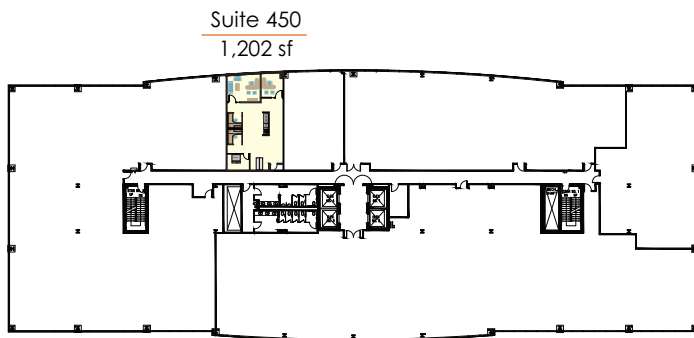
First Floor



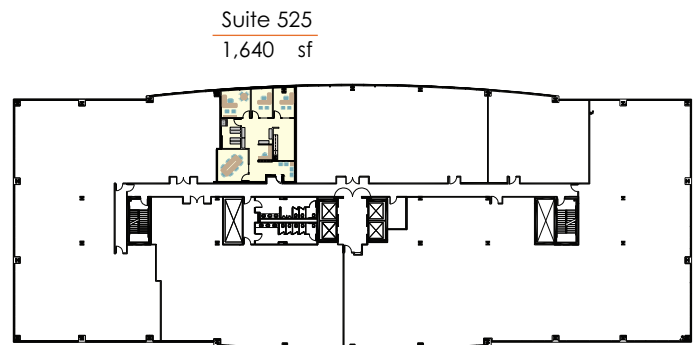
Second Floor



Third Floor



Fourth Floor



Fifth Floor

[WWW.PREMISESCOMMERCIAL.COM](http://WWW.PREMISESCOMMERCIAL.COM)

The information contained herein, while not guaranteed, has been secured from sources we believe to be reliable. Different brokerage relationships are available which include Seller/Landlord Agency, Buyer/Tenant Agency and Transaction Broker. Premises Commercial Real Estate, LLC is acting in this capacity as Landlord's/Sublessor's Agent, unless otherwise agreed, and owes its fiduciary allegiance to Landlord/Sublessor as defined by Colorado Real Estate Commission.