



2010 & 2050 WEST CHESTER PIKE

**MEDICAL SPACE
AVAILABLE FOR LEASE!**



**2010 & 2050 West
Chester Pike
Havertown, PA 19083**

PROPERTY OVERVIEW

1,500 Sq Ft Available for Lease at
2010 West Chester Pike

2,980 Sq Ft / 2nd Floor (Full Floor)
Medical Space Available for Lease at
2050 West Chester Pike



PRIME LOCATION



ABUNDANT ON-SITE PARKING



**INSTITUTIONAL OWNERSHIP AND PROPERTY
MANAGEMENT**



ANCHORED BY A SURGERY CENTER



ASKING RENT INCLUDES TENANT



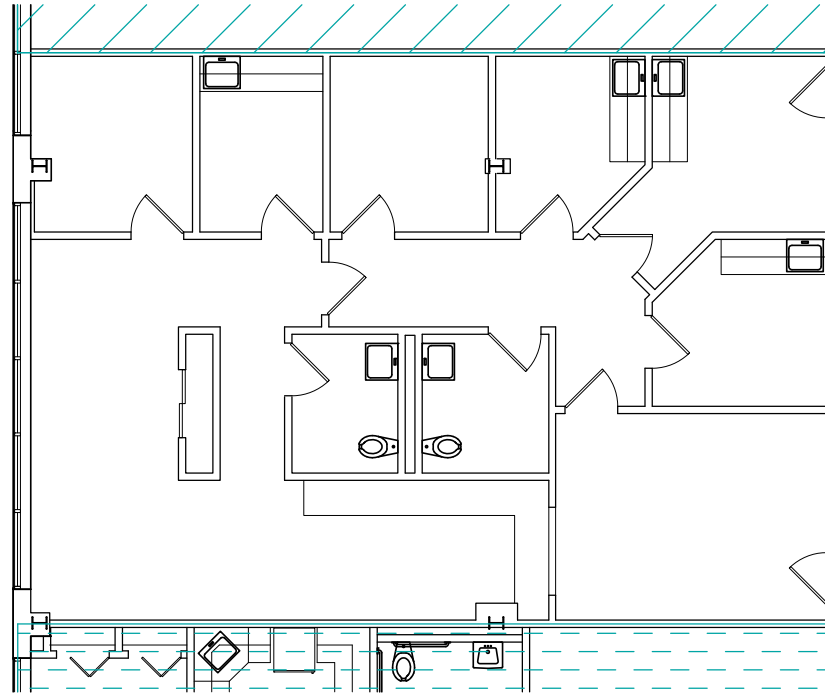
IMPROVEMENT PACKAGE



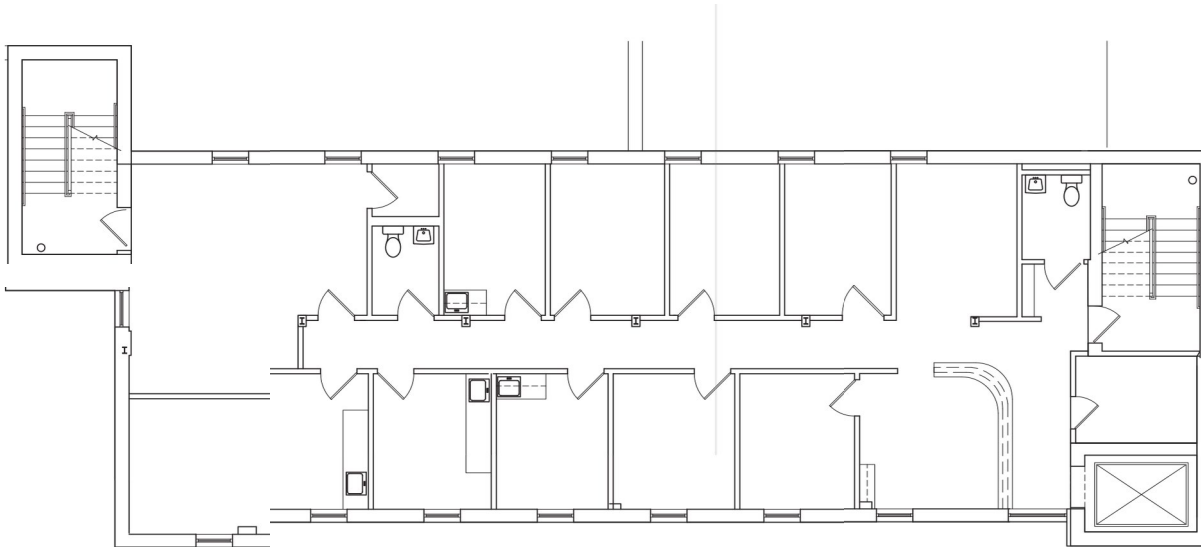
**HIGHLY VISIBLE PROPERTY ALONG WEST CHESTER
PIKE (+- 47,000 VEHICLES PER DAY)**



SITE PLAN



2010 West Chester Pike
1,500 SQ FT



2050 West Chester Pike
2,980 SQ FT

LOCATION OVERVIEW



DON GRIMES

Managing Director
610-601-4204
dgrimes@sshco.com

BRENDAN SCHNEIDER

Vice President
610-601-4207
bschneider@sshco.com



Neither owner nor SSH Real Estate makes any guarantees, warranties or representations, express or implied, as to the completeness or accuracy as to the information contained herein. Any projections, opinions, assumptions or estimates used are for example only. There may be differences between potential projected and actual, and those differences may be material. The property may be withdrawn without notice. Neither owner nor SSH accepts any liability for any loss or damage suffered by any party resulting from reliance on this information. If the recipient of this information has signed a confidentiality agreement regarding this matter, this information is subject to the terms of that agreement.