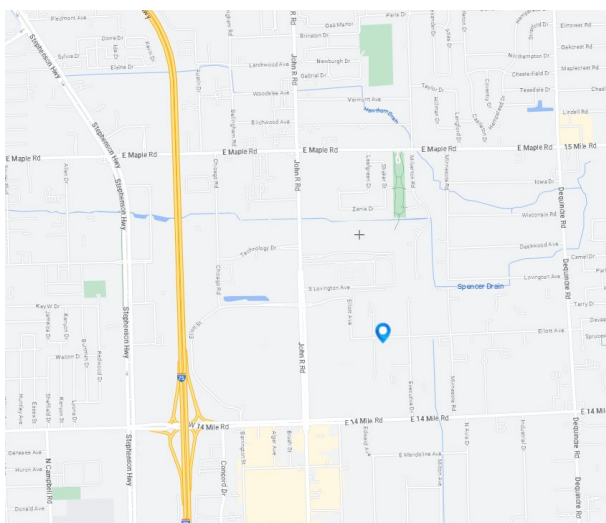




FOR LEASE

450 Robbins

Troy, MI



Property Highlights

- 19,045 SF Available For Lease
- One (1) Interior Truckwell
- Buss Duct Bars
- Airlines
- Ample Parking
- 18' Ceiling Height

For information, please contact:

Geoff Hill
Executive Managing Director
t 248-350-1492
geoff.hill@nmrk.com

Chris Hill
Director
t 248-350-1192
chris.hill@nmrk.com

Teddy O'Keefe
Associate
t 248-447-2715
teddy.okeefe@nmrk.com

27725 Stansbury Blvd, Suite 300
Farmington Hills, MI 48334



nmrk.com

NEWMARK

The information contained herein has been obtained from sources deemed reliable but has not been verified and no guarantee, warranty or representation, either express or implied, is made with respect to such information. Terms of sale or lease and availability are subject to change or withdrawal without notice.

Lease

450 Robbins Dr Troy, MI 48083



Pricing Information:

Lease Rate Range:	\$8.95-\$8.95 NNN
Lease Type:	NNN
Sale Price:	N/A
Price per SF:	N/A
Real Estate Taxes psf:	\$0.00
Building Insurance psf:	\$0.00
CAM psf:	N/A

Property Details:

Total Building Area:	19,045 sf	Parcel ID:	20-36-376-039
Min/Max Available:	19,045 sf	Parking Description:	
Office Area:	2,487 sf	Rail Served:	No
Property Type:	General Industrial	Cranes:	No
Tenancy:	Single-tenant	Heat:	Gas Units
Year Built:	01/01/1976	Clear Height Min/Max:	18.0'
Year Renovated:		Grade/Dock Doors:	1 / 1
Zoning:	M-1	Sprinkler:	Yes
Site/Parcel Area:	1.39 acres	Power:	1,000 amps, 240 volt

Comments:

Great manufacturing or warehousing building, 1 interior truckwell, parking lot repairs in 2024, buss duct, airlines.

Geoffrey Hill

248.350.1492

Geoff.Hill@nrmk.com

Chris Hill

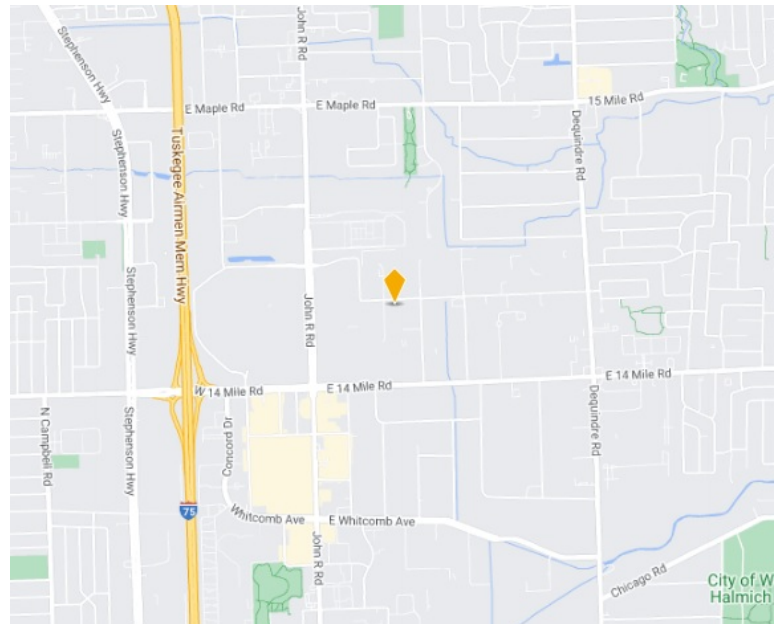
248.350.1192

Chris.Hill@nrmk.com

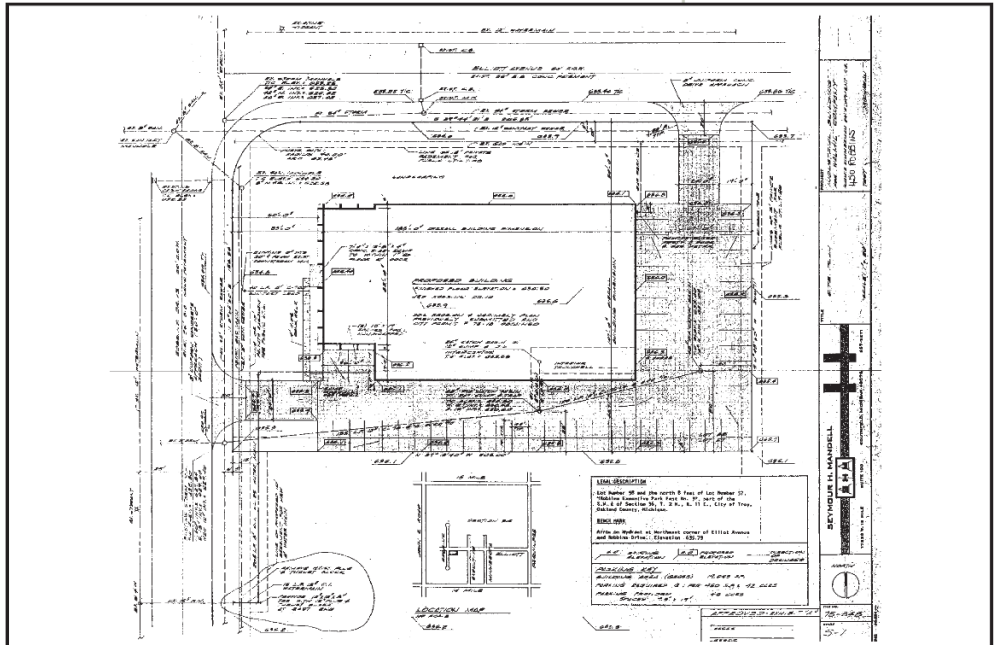
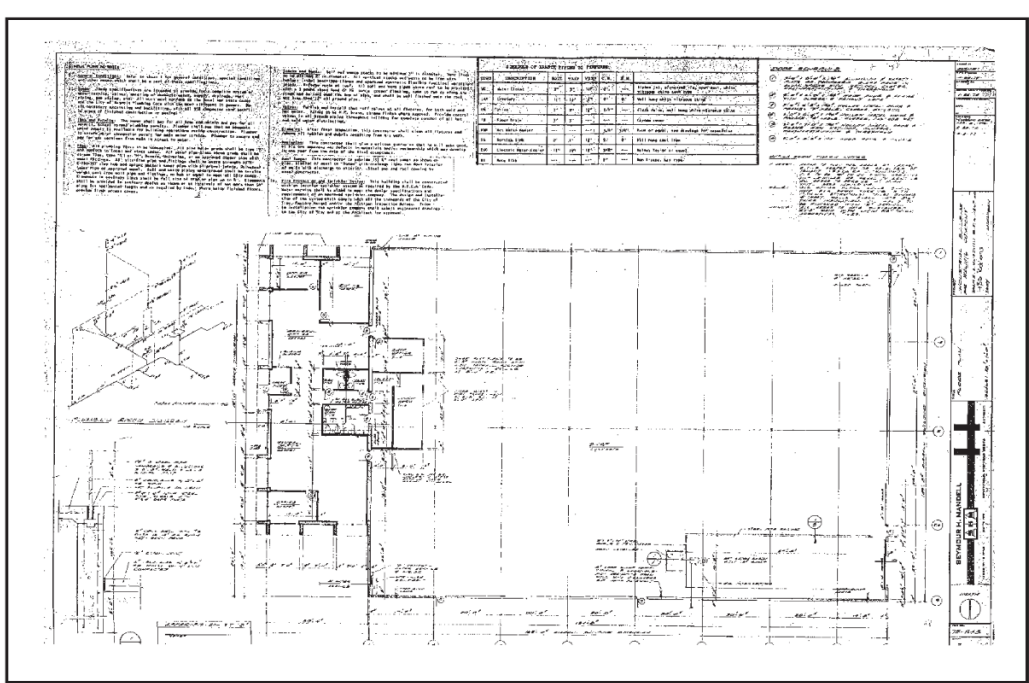
Teddy O'Keefe

248.320.5216

Teddy.Keefe@nrmk.com



450 Robbins, Troy



CONTACT

Geoff Hill
 Executive Managing Director
 t 248-350-1492
 geoff.hill@nmrk.com

Chris Hill
 Director
 t 248-350-1192
 chris.hill@nmrk.com

Teddy O'Keefe
 Associate
 t 248-447-2715
 teddy.okeefe@nmrk.com