



CUSHMAN &
WAKEFIELD

CLASS A OFFICE FOR
LEASE

**COMMERCIAL
TOWER**
At Executive Airport

2101 W Commercial Blvd
Fort Lauderdale, FL 33309

*Unmatched Accessibility
in the Heart of Broward*





PROPERTY HIGHLIGHTS


Position your business at Commercial Tower — a modern, 5-story Class A office building in the heart of Fort Lauderdale. Featuring sleek marble entryways, lake views, and flexible suite options ranging from ±1,000 to ±9,212 SF, this professionally managed property provides a refined and efficient environment for growing companies.


Tenants benefit from a recently renovated lobby, on-site conference center, and abundant parking — all just minutes from I-95, the Florida Turnpike, and Fort Lauderdale Executive Airport. Commercial Tower is where modern business meets everyday convenience.


I-95 Ideally situated between the Florida Turnpike and I-95, offering easy accessibility.

 Class A building with brand new spec suites available.


 Minutes to Cypress Creek Tri-Rail station, Ft. Lauderdale/ Hollywood International Airport, and Ft. Lauderdale Executive Airport.

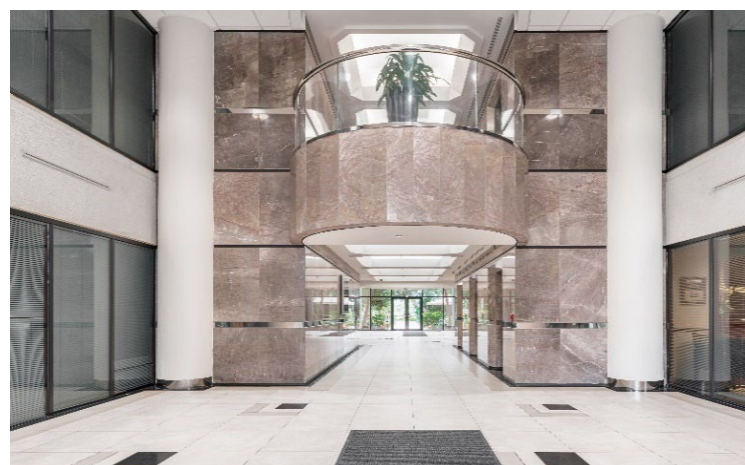
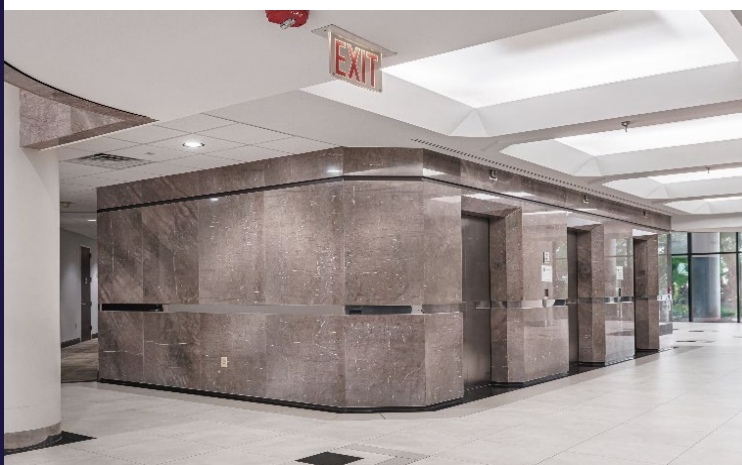
 Renovated marble lobby with upgraded finishes.

 Close proximity to retail, dining, and banking options.

 New state-of-the-art tenant conference center.

 4/1,000 SF parking ratio. Covered parking is available.

 Brand new elevators and modernized building systems.



TIME IS MONEY. SAVE BOTH!

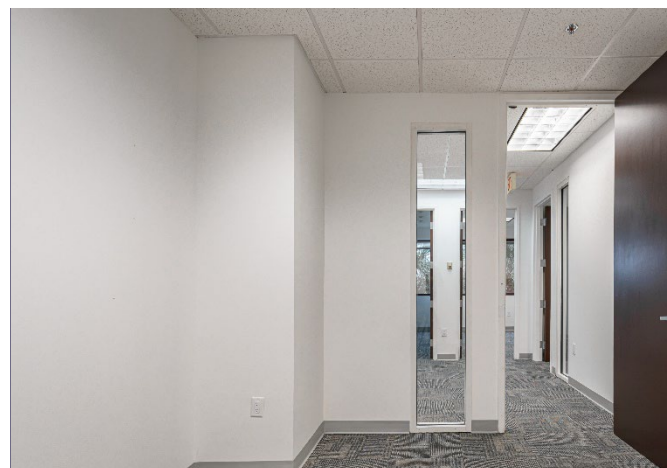
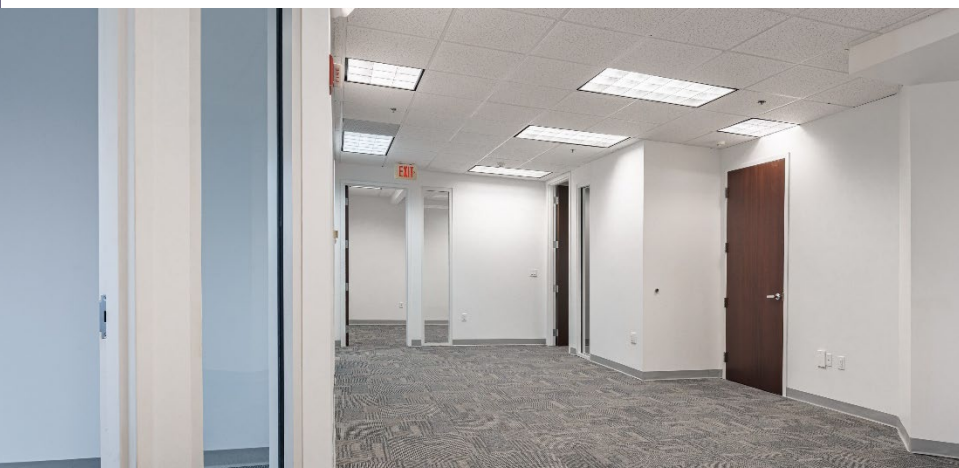
FOURTH FLOOR - BRAND NEW CONTIGUOUS SPEC SUITES AVAILABLE OFFERING FLEXIBILITY TO MEET YOUR NEEDS



Availability: 1,000 SF – 9,212 SF

Suite 1600	853 SF	Suite 4200-A	2,695 SF
Suite 1400	3,156 SF	Suite 4400-B	3,665 SF
Suite 2000	3,287 SF	Suite 5200	1,562 SF
Suite 2600	1,870 - 8,800 SF	Suite 5350	1,550 SF

Rental Rate: \$17.50 NNN



LOCATION! LOCATION! LOCATION!



OUTSTANDING LOCATION AND ACCESSIBILITY

- Within one hour drive of roughly 92% of South Florida's population
- Daily traffic count surrounding the Portfolio exceeds 400,000 VPD
- Proximate to Downtown Fort Lauderdale, Ft. Lauderdale International Airport, and .5 mile south of Fort Lauderdale's Executive Airport
- 2.6 miles west of the Commercial Boulevard exit off I-95 and 1.7 miles east of the Commercial Boulevard exit of the Florida Turnpike



2.4 MILES



2.9 MILES



1.3 MILES



3.6 MILES



13.6 MILES

ACCESS TO **5.3M PEOPLE** WITHIN A ONE HOUR DRIVE

For more information, please contact:



DONNA KORN
 Managing Director
 +1 954 938 2610
 donna.korn@cushwake.com



BEAU LADWIG
 Director
 +1 954 938 2610
 beau.ladwig@cushwake.com



CUSHMAN & WAKEFIELD

cushmanwakefield.com

©2026 Cushman & Wakefield. All rights reserved. The information contained in this communication is strictly confidential. This information has been obtained from sources believed to be reliable but has not been verified. NO WARRANTY OR REPRESENTATION, EXPRESS OR IMPLIED, IS MADE AS TO THE CONDITION OF THE PROPERTY (OR PROPERTIES) REFERENCED HEREIN OR AS TO THE ACCURACY OR COMPLETENESS OF THE INFORMATION CONTAINED HEREIN, AND SAME IS SUBMITTED SUBJECT TO ERRORS, OMISSIONS, CHANGE OF PRICE, RENTAL OR OTHER CONDITIONS, WITHDRAWAL WITHOUT NOTICE, AND TO ANY SPECIAL LISTING CONDITIONS IMPOSED BY THE PROPERTY OWNER(S). ANY PROJECTIONS, OPINIONS OR ESTIMATES ARE SUBJECT TO UNCERTAINTY AND DO NOT SIGNIFY CURRENT OR FUTURE PROPERTY PERFORMANCE. PD-191542-V1