

# 204 Marsh Avenue

Reno, Nevada 89509



## Property Information

Perfect office location in Midtown on the corner of Plumas and Marsh. This building is undergoing a major transformation including all new windows, new landscaping, a new parking lot on the North side of the building, repaving the South parking lot, new exterior paint and modern finishes to the exterior. The interior will have new luxury vinyl plank flooring, smooth texturing, and modern finishes throughout. 204 Marsh is walking distance to many of Reno's favorite retail amenities including The Cheese Board, Full Belly Deli, Old World Coffee Lab, Great Full Gardens, SUP and many more.

- + Professional Office Building
- + Lease Rate: \$2.50 PSF, FS
- + Suite 100 Available for Lease
  - 1,847 SF
- + Elevator Served
- + Private Parking Lot

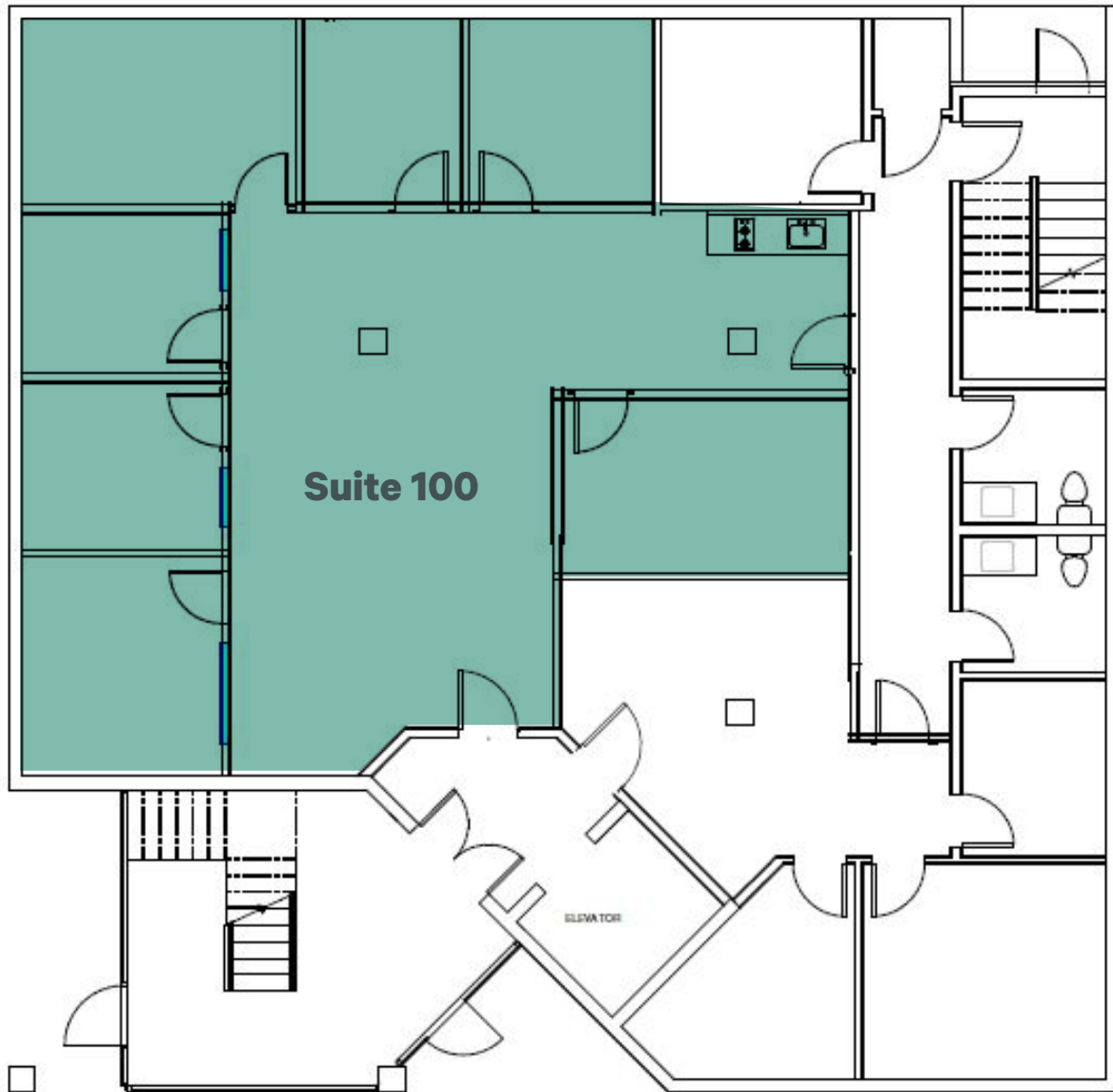


# Floor Plans

## First Floor

Suite 100

+ Option 1 - 1,847 SF







## Contact Us

### Leahna Chapman

Associate  
+1 775 823 6937  
leahna.chapman@cbre.com  
Lic. 0183267

### David Woods, CCIM

Senior Vice President  
+1 775 321 4459  
david.woods@cbre.com  
Lic. 0072655

### Matt Grimes, CCIM

Senior Vice President  
+1 775 356 6290  
matt.grimes@cbre.com  
Lic. 0072644

© 2024 CBRE, Inc. All rights reserved. This information has been obtained from sources believed reliable, but has not been verified for accuracy or completeness. You should conduct a careful, independent investigation of the property and verify all information. Any reliance on this information is solely at your own risk. CBRE and the CBRE logo are service marks of CBRE, Inc. All other marks displayed on this document are the property of their respective owners, and the use of such logos does not imply any affiliation with or endorsement of CBRE. Photos herein are the property of their respective owners. Use of these images without the express written consent of the owner is prohibited.