

# OFFICE SPACE FOR LEASE

6400 VILLAGE PKWY, DUBLIN, CA 94568



±1,540 SF - ±1,795 RSF available

Office/Medical/Dental uses allowed

Tenant improvement allowance

Well-maintained professional building

Walk to dining and shopping establishments

Convenient location to I-580, I-680, and West  
Dublin/Pleasanton BART station

*For more leasing  
information contact*

**SIMON VOGT, SIOR**  
925.905.1112  
simon.vogt@kidder.com  
LIC N°01879314

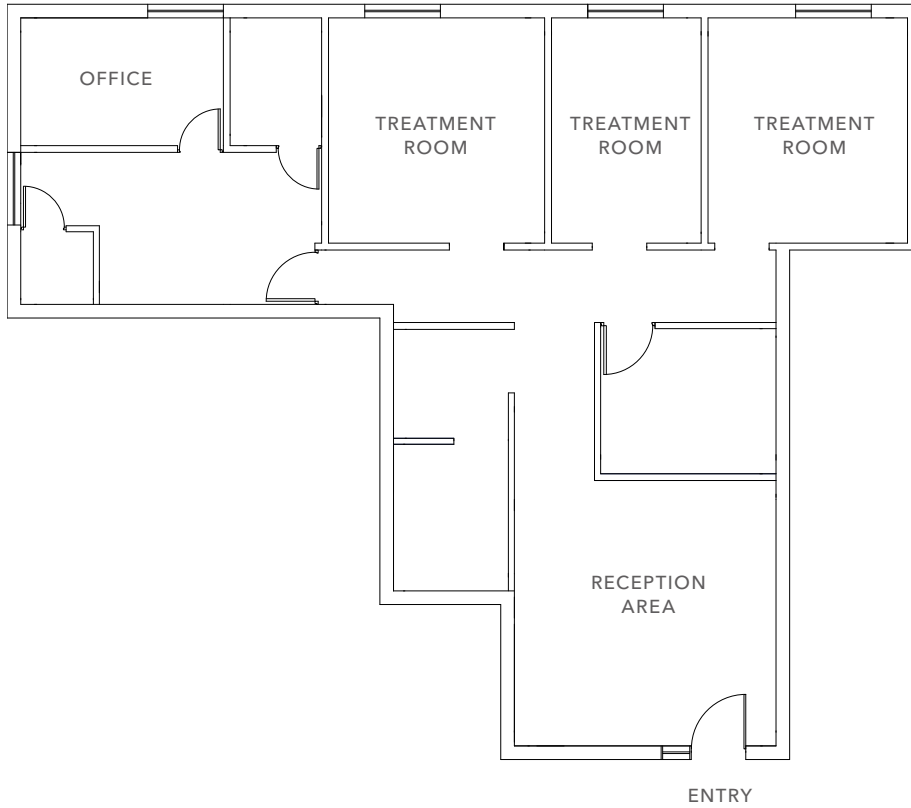
**KIDDER.COM**

This information supplied herein is from sources we deem reliable. It is provided without any representation, warranty, or guarantee, expressed or implied as to its accuracy. Prospective Buyer or Tenant should conduct an independent investigation and verification of all matters deemed to be material, including, but not limited to, statements of income and expenses. Consult your attorney, accountant, or other professional advisor.

**km Kidder  
Mathews**

# SUITE 100

DENTAL SPACE



***±1,540 RSF***

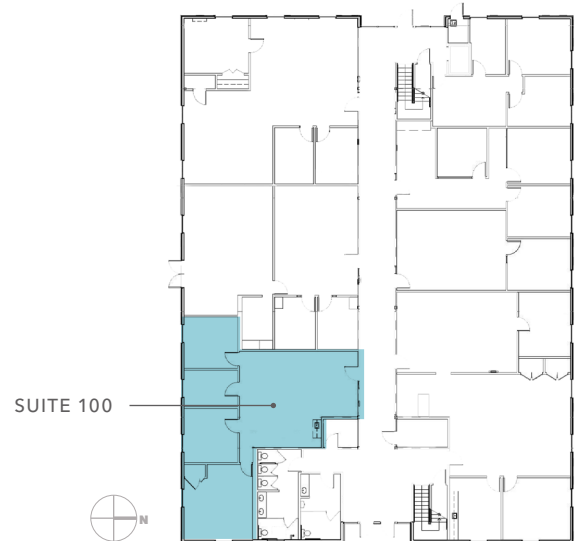
TOTAL AREA

***NOW***

AVAILABLE

***CONTACT***

BROKER FOR PRICING



**SIMON VOGT, SIOR**

925.905.1112

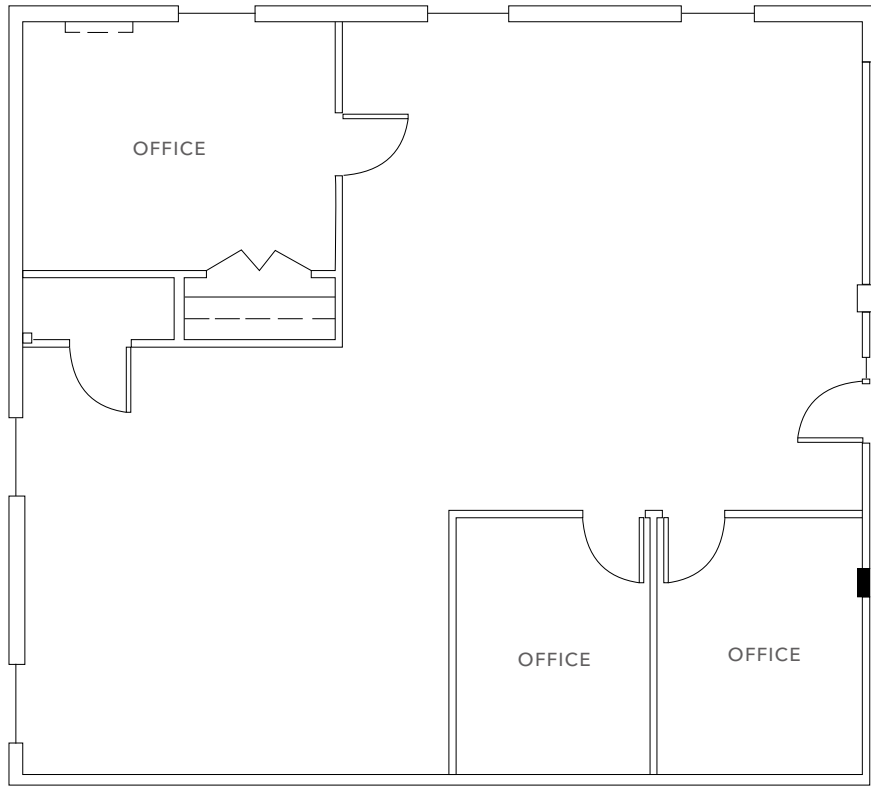
simon.vogt@kidder.com

LIC N°01879314

**KIDDER.COM**

This information supplied herein is from sources we deem reliable. It is provided without any representation, warranty, or guarantee, expressed or implied as to its accuracy. Prospective Buyer or Tenant should conduct an independent investigation and verification of all matters deemed to be material, including, but not limited to, statements of income and expenses. Consult your attorney, accountant, or other professional advisor.

# SUITE 104



*±1,795 RSF*

TOTAL AREA

*NOW*

AVAILABLE

*CONTACT*

BROKER FOR PRICING

SUITE 104



**SIMON VOGT, SIOR**

925.905.1112

simon.vogt@kidder.com

LIC N°01879314

**KIDDER.COM**

This information supplied herein is from sources we deem reliable. It is provided without any representation, warranty, or guarantee, expressed or implied as to its accuracy. Prospective Buyer or Tenant should conduct an independent investigation and verification of all matters deemed to be material, including, but not limited to, statements of income and expenses. Consult your attorney, accountant, or other professional advisor.



# SUITE 200

***±1,723 RSF***

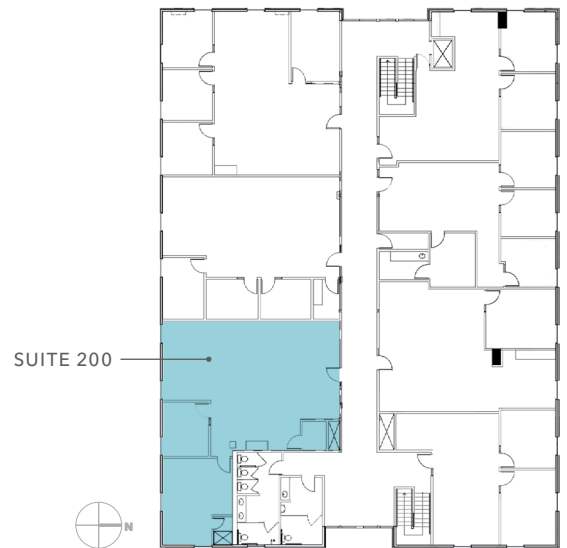
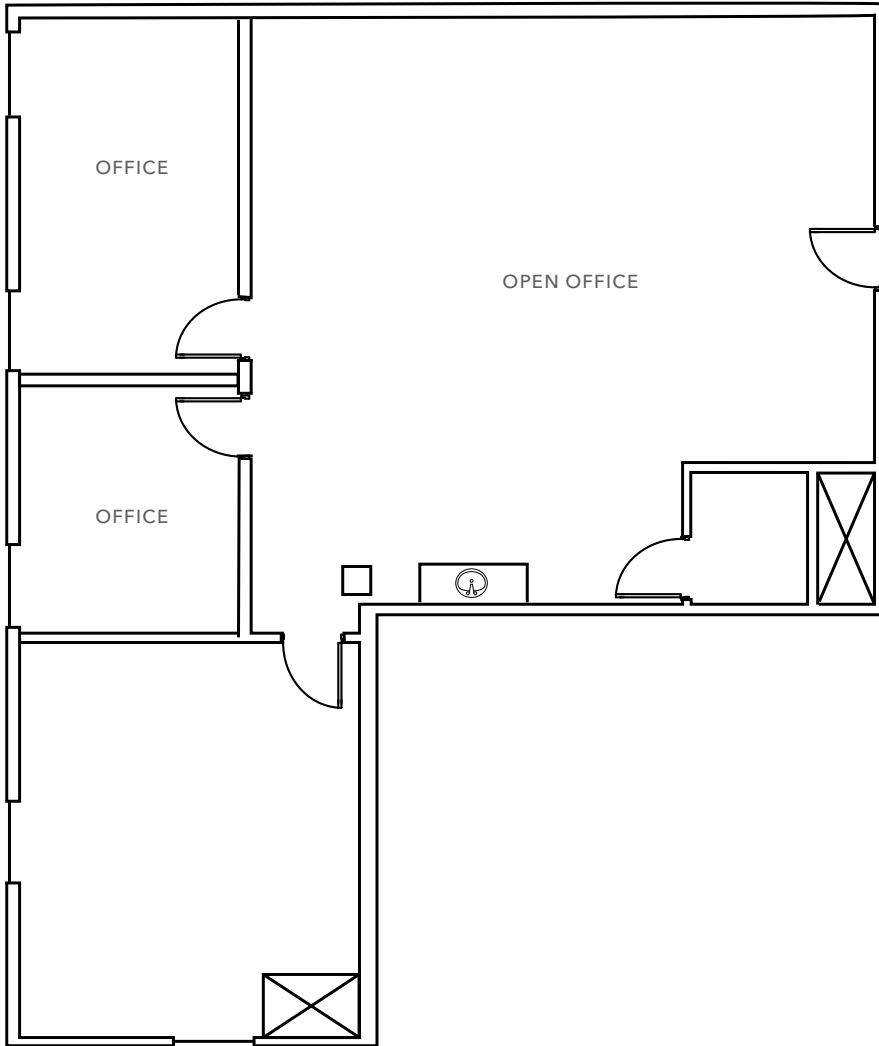
TOTAL AREA

***NOW***

AVAILABLE

***CONTACT***

BROKER FOR PRICING



**SIMON VOGT, SIOR**

925.905.1112

simon.vogt@kidder.com

LIC N°01879314

**KIDDER.COM**

This information supplied herein is from sources we deem reliable. It is provided without any representation, warranty, or guarantee, expressed or implied as to its accuracy. Prospective Buyer or Tenant should conduct an independent investigation and verification of all matters deemed to be material, including, but not limited to, statements of income and expenses. Consult your attorney, accountant, or other professional advisor.



