



CBRE

5101 FLORIN PERKINS ROAD



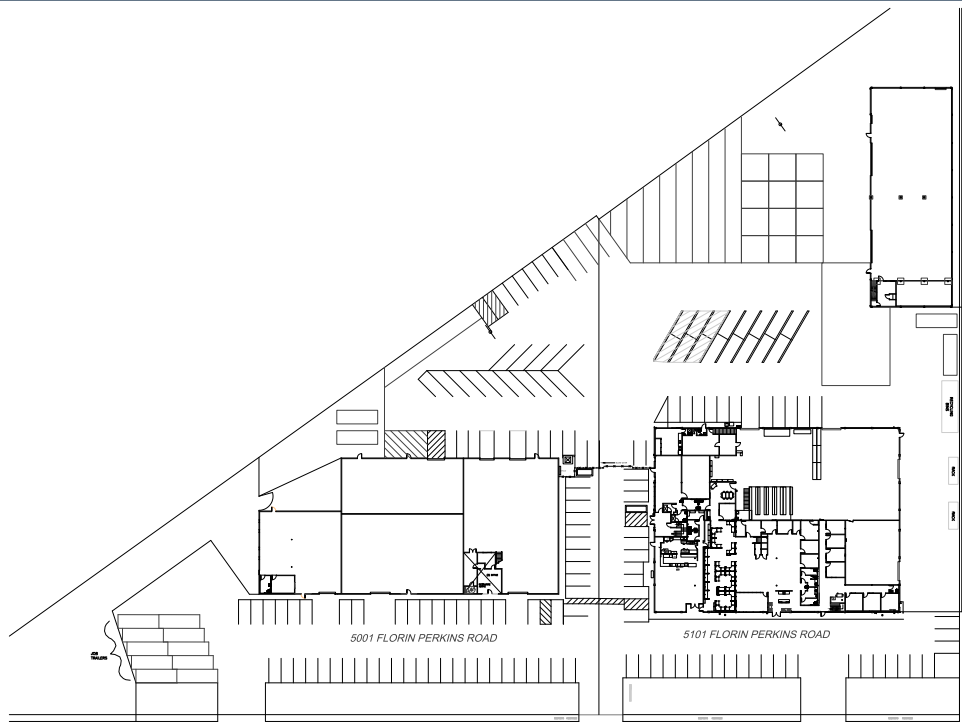
**±26,830 SF ON ±2.27 ACRES
FOR LEASE**

BUILDING SPECIFICATIONS

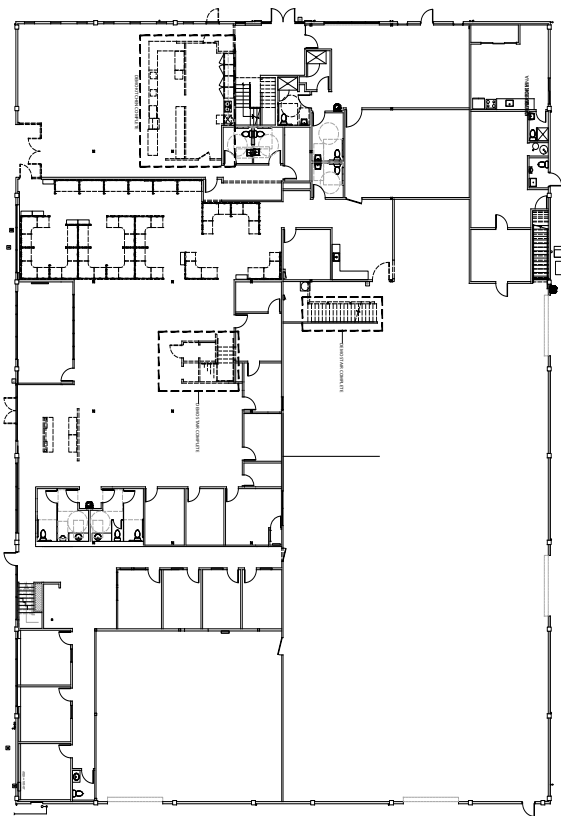
Spec Type	Spec Details
Total Structures:	±26,830 SF
Warehouse/Shop:	±8,140 SF
Office - 1st Floor:	±16,290 SF
Office - 2nd Floor:	±16,290SF
Canopy:	±2,400 SF
Yard:	±31,806SF
Land Size:	±2.27 Acres (±98,881 SF)
Clear Height:	20'
Construction Type:	Concrete Tilt-Up
Power:	600 amps, 277/480V, 3 phase (estimated)
Loading:	Grade Level Loading (12' x 14')
Zoning:	M-2(S) zoning, City of Sacramento
Sprinklers:	Wet
Other Features:	Skylights



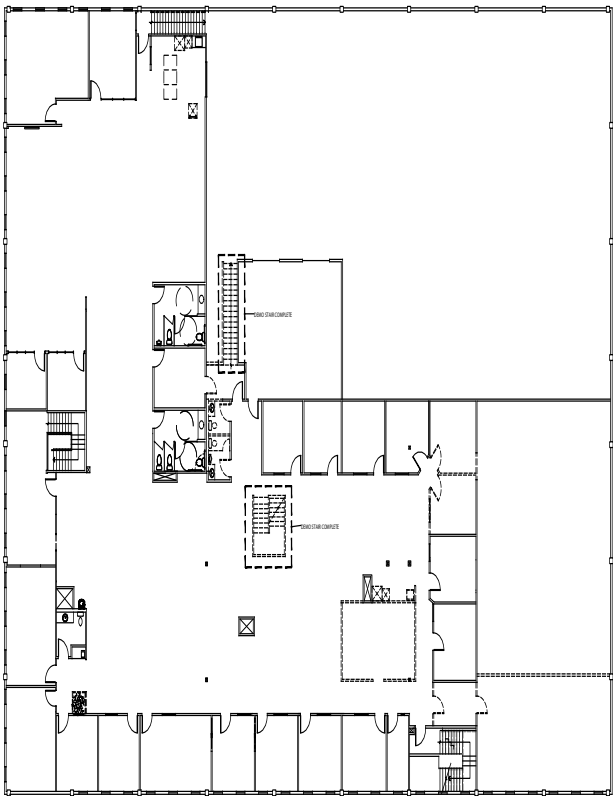
FLOOR PLAN



First Floor Office



Second Floor Office



Not to Scale



**5101 FLORIN PERKINS ROADS
SACRAMENTO, CA**

**±26,830 SF ON ±2.27
ACRES
FOR LEASE**



SEAN MEROLD, SIOR

Senior Vice President
+1 916 446 8701
sean.merold@cbre.com
Lic. 01803204

MIKE ZIMMERMAN, SIOR

Senior Vice President
+1 916 446 8702
mike.zimmerman1@cbre.com
Lic. 01514055

RYAN DEANGELIS, SIOR

Executive Vice President
+1 916 871 3714
ryan.deangelis@cbre.com
Lic. 01280330

JIMMY LANDIS

Senior Associate
+1 916 446 8280
jimmy.landis@cbre.com
Lic. 02130311

© 2025 CBRE, Inc. All rights reserved. This information has been obtained from sources believed reliable but has not been verified for accuracy or completeness. CBRE, Inc. makes no guarantee, representation or warranty and accepts no responsibility or liability as to the accuracy, completeness, or reliability of the information contained herein. You should conduct a careful, independent investigation of the property and verify all information. Any reliance on this information is solely at your own risk. CBRE and the CBRE logo are service marks of CBRE, Inc. All other marks displayed on this document are the property of their respective owners, and the use of such marks does not imply any affiliation with or endorsement of CBRE. Photos herein are the property of their respective owners. Use of these images without the express written consent of the owner is prohibited.