

19785 CRYSTAL ROCK DR

Germantown, MD 20874

FOR LEASE

LAST SUITE REMAINING

- 3,399 SF
- OFFICE OR MEDICAL USE
- 24/7 ACCESS
- CORNER SUITE AMAZING WINDOWLINE
- CLOSE TO MANY AMENITIES, RESTAURANTS & HOLY CROSS HOSPITAL
- PLENTY OF PARKING
- IMMEDIATE ACCESS TO I-270



3,399 SF

IMMEDIATE OCCUPANCY!!



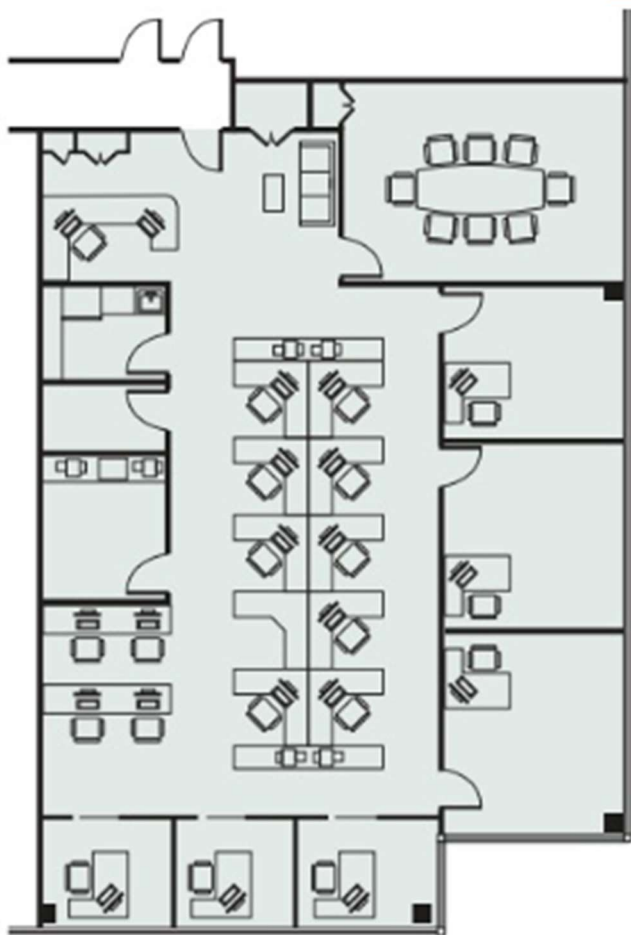
CAPSTAR
COMMERCIAL REALTY

438 N. Frederick Ave, Suite 450
Gaithersburg, MD 20877
Office: 301-738-7777

LUCAS GLAESER

Lglaeser@capstarco.com

1+ 240 505 9331



SUITE 307 | 3,399 SF



CRYSTAL ROCK PLACE

ACVS FOUNDATION	GUL CHABLANI, M.D.
AMERICAN COLLEGE OF VETERINARY SURGEONS	KLINGER INSURANCE GROUP AUTO • HOME • LIFE • BUSINESS INSURANCE
AMI HEALTHCARE MANAGEMENT, INC.	LABCORP HOURS: MON. - FRI. 7 AM - 4PM
BROKERAGE SERVICES INTERNATIONAL, INC.	SKYPOINT FEDERAL CREDIT UNION
CAPITAL ALLERGY ASTHMA & IMMUNOLOGY Y. HOWARD PUNG, M.D.	PIVOT PHYSICAL THERAPY
MONTGOMERY FAMILY CHIROPRACTIC, LLC NORMAN HAENDLER, D.C.	SMILE DENTAL CARE CHANDRIKA BHUT, D.D.S.
DESAI & SHAH, PC, CPAs	SKYPOINT FCU 24 HOUR ATM - DRIVE THRU - BRANCH
DOCTORS FIRST	
EAMAN PHYSICAL THERAPY	





CONTACT
LUCAS GLAESER
 +1 240 505 9331
Lglaeser@capstarco.com

© 2023 CapStar Commercial Realty All rights reserved. This information has been obtained from sources believed reliable, but has not been verified for accuracy or completeness. Any reliance on this information is solely at your own risk. All marks displayed on this document are the property of their respective owners, and the use of such logos does not imply any affiliation with or endorsement of CapStar. Photos herein are the property of their respective owners. Use of these images without the express written consent of the owner is prohibited.