

REALTY
CONCEPTS

THE FAMILY COMPANY

FOR SALE

1191 E Alluvial Ave

Fresno, CA 93720

4.4 Acres

*Incredible office and opportunity located in
Northeast Fresno.*

JASON HIGTON

559.978.8586

jh@realtyconcepts.com

REALTOR® DRE 01978135

RYAN HIGTON

559.978.8586

jh@realtyconcepts.com

REALTOR® DRE 01978135

1191 E Alluvial Ave

Fresno, CA 93720

Incredible office land opportunity, located in Northeast Fresno. This 4.4 AC parcel is located within the highly desirable medical and general office market, which sits between North Millbrook and North Cedar Avenues. Freeway access is close by for both 41 and 168. The site has excellent signage and visibility from both Alluvial and Spalding Avenues. 3 parcels are included in this offering, with one that has a SFR with possible rental income as development ensues.



JASON HIGTON

559.978.8586

jh@realtyconcepts.com

REALTOR® DRE 01978135

RYAN HIGTON

559.978.8586

jh@realtyconcepts.com

REALTOR® DRE 01978135

Location Alluvial and Spalding Ave

Address 1191 E Alluvial Ave,
Fresno, CA 93720

APN 404-030-05, 404-030-06,
404-030-06

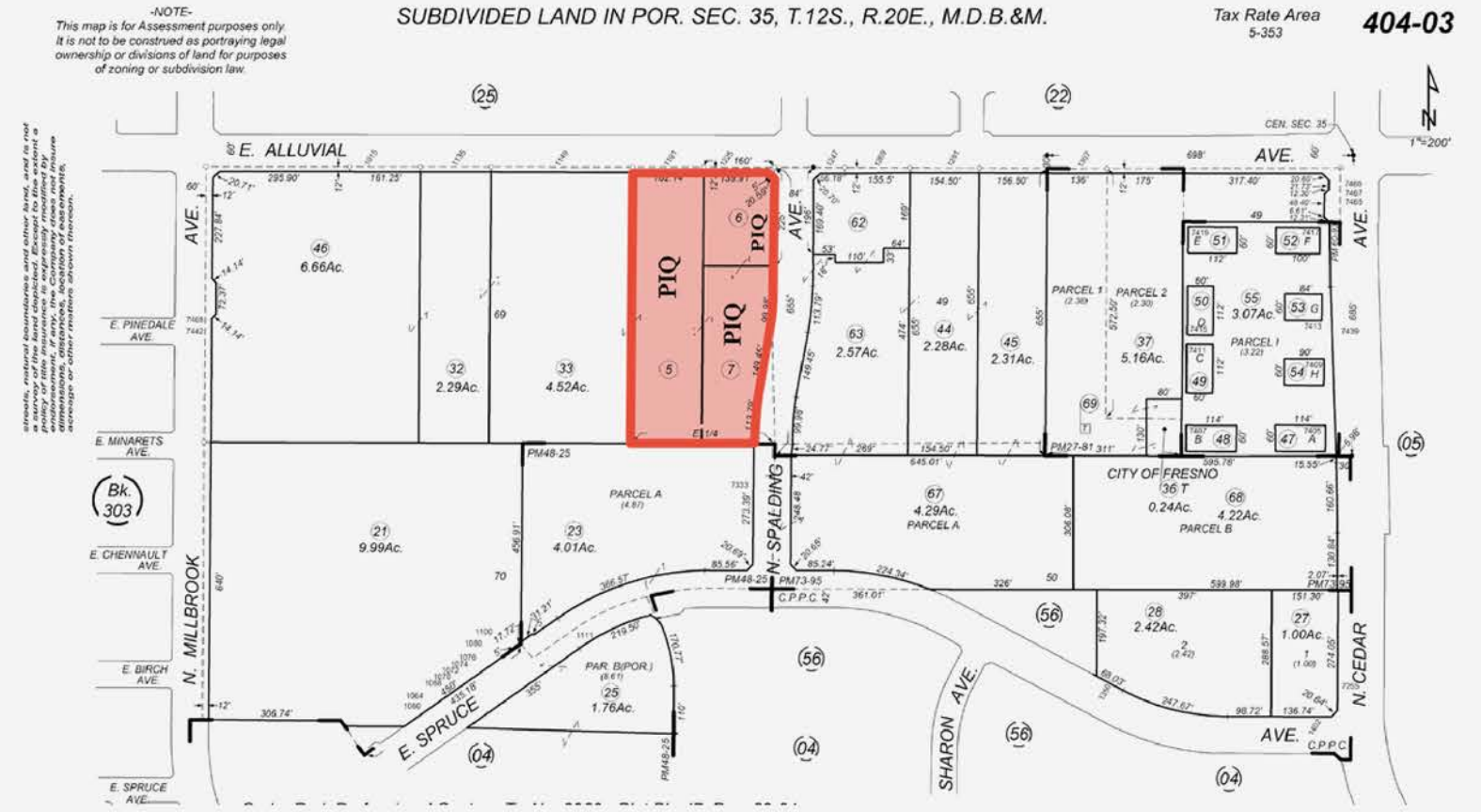
Lot Size 4.4 Acres



Asking Price
\$3,475,000

JASON HIGTON
559.978.8586
jh@realtyconcepts.com
REALTOR® DRE 01978135

RYAN HIGTON
559.978.8586
jh@realtyconcepts.com
REALTOR® DRE 01978135



Surrounding Area



Herndon

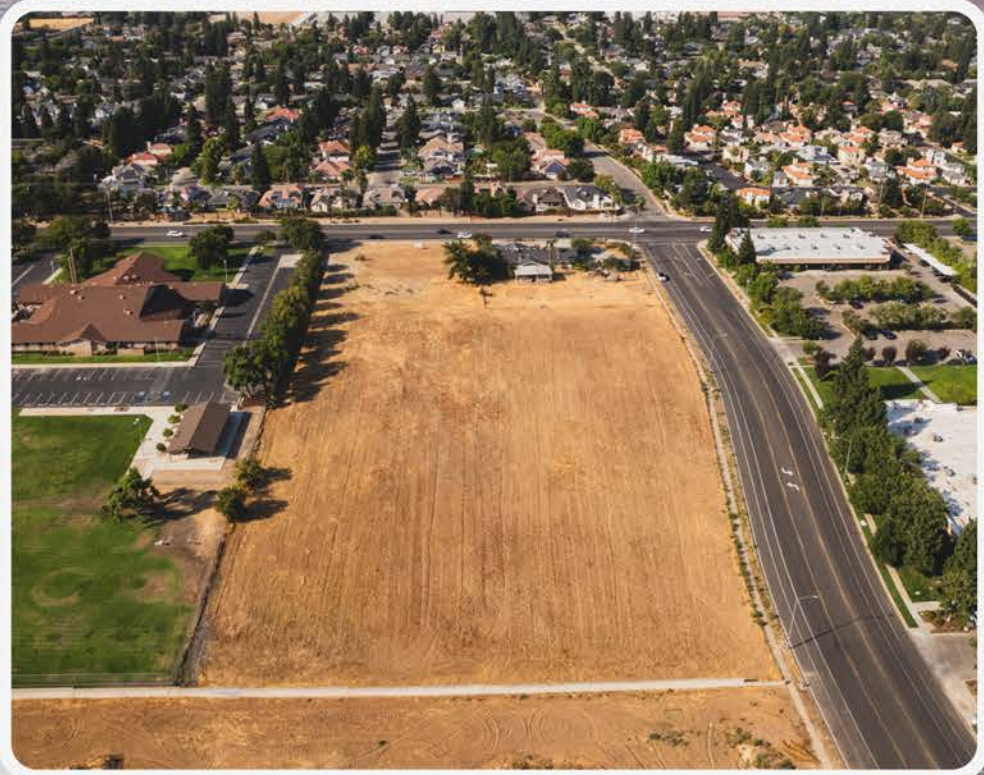


Alluvial



EYE-Q

Cedar



Let us know if you have any questions.

Call either agent for information. Two entities own the three parcels and are likely to sell together. Corner parcel has longtime tenant. Showings on the house are not available.

Call today!



JASON HIGTON
559.978.8586
jh@realtyconcepts.com
REALTOR® DRE 01978135

RYAN HIGTON
559.978.8586
jh@realtyconcepts.com
REALTOR® DRE 01978135