

High Growth Area, 3.71 acres

Presented By:
eXp Realty Associates, LLC.

7965 Spence Rd, Fairburn, GA 30213



High Growth Area, 3.71 acres, South Fulton

7965 Spence Rd, Fairburn, GA 30213

Property Details

This parcel is well-suited for a variety of uses, including Office-Institutional, Light Commercial, Townhomes, or Mixed Uses. It offers a strong corner presence due to its extensive road frontage: 535 feet on Spence Road (Highway 92) and 656 feet on Harris Road, totaling a combined frontage of over 1,190 feet.

Additionally, the corner location allows for the potential installation of a traffic signal, which could enhance accessibility and visibility.

Currently zoned Office - Institutional, recently approved with daycare conditons. Zoning modification for conditions and site plan can be done administratively. Many O-I uses in support of Senior Housing, Assisted Living, Health Care Centers as well as rezoning for Townhomes, Light Commercial, Mixed Use.

Price: \$699,000

- Proximity to High Growth Cooridors of I-85 Exiit 61 (Fairburn) and Exit 64 (Union City).
- 22 miles south of Downtown Atlanta, and 13 miles south of the Airport.
- Property has dual frontage on Hwy 92 (Spence) and Harris Roads allowing for multiple access points.

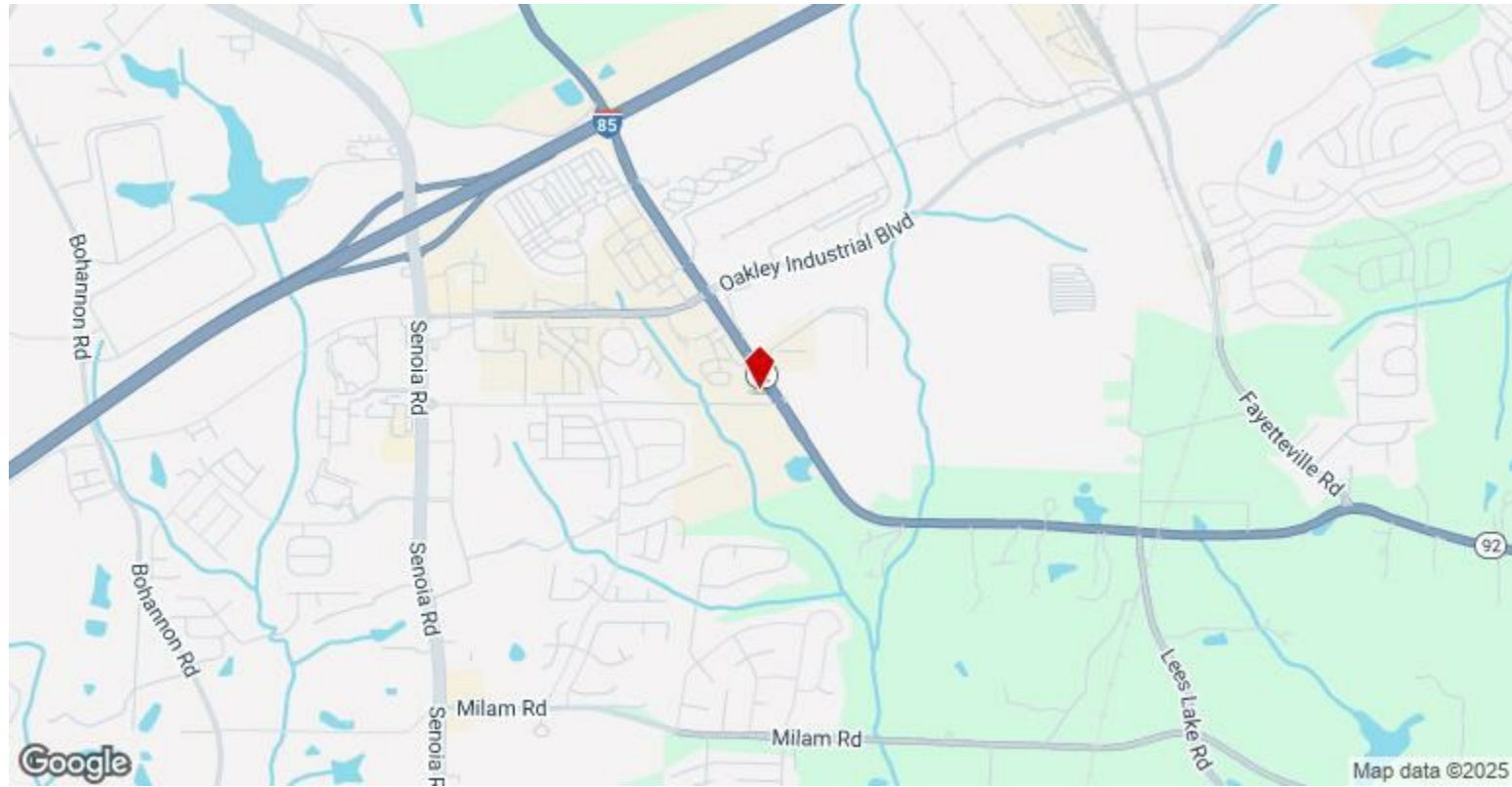
View the full listing here: <https://www.loopnet.com/Listing/7965-Spence-Rd-Fairburn-GA/33907371/>

Price:	\$699,000
Property Type:	Land
Property Subtype:	Commercial
Proposed Use:	Retail
Sale Type:	Investment or Owner User
Total Lot Size:	3.71 AC
Sale Conditions:	Redevelopment Project
No. Lots:	1
Zoning Description:	O-I
APN / Parcel ID:	09F-0600-0025-040-6

High Growth Area, 3.71 acres, South Fulton

7965 Spence Rd, Fairburn, GA 30213

Location



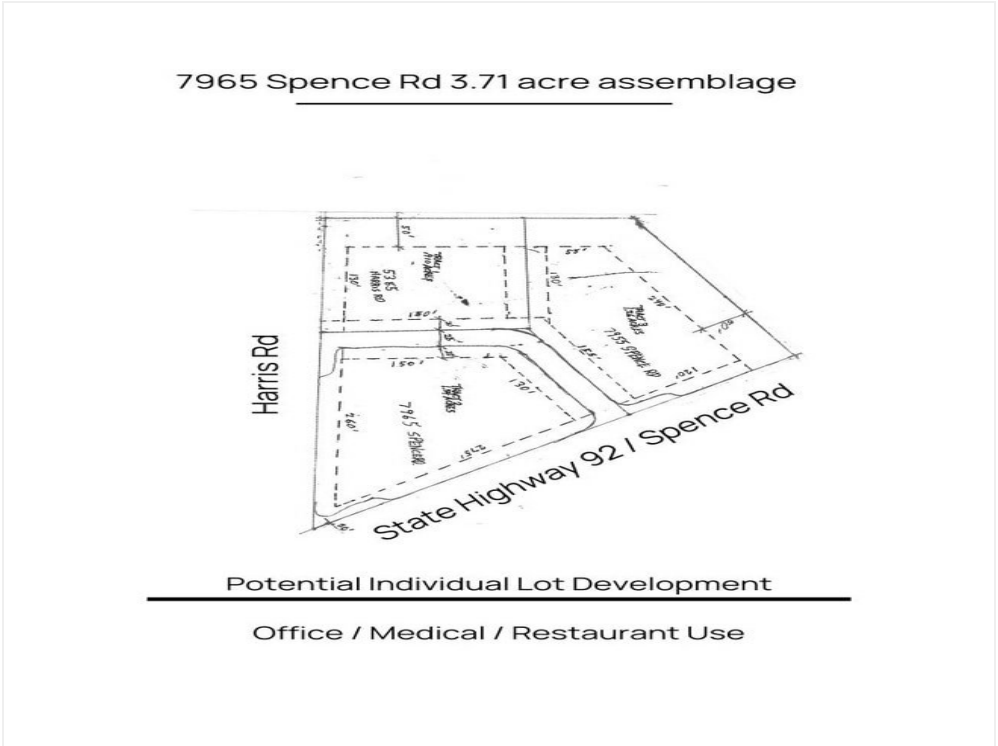
High Growth Area, 3.71 acres, South Fulton

7965 Spence Rd, Fairburn, GA 30213

Property Photos



Corner satelittle closeup

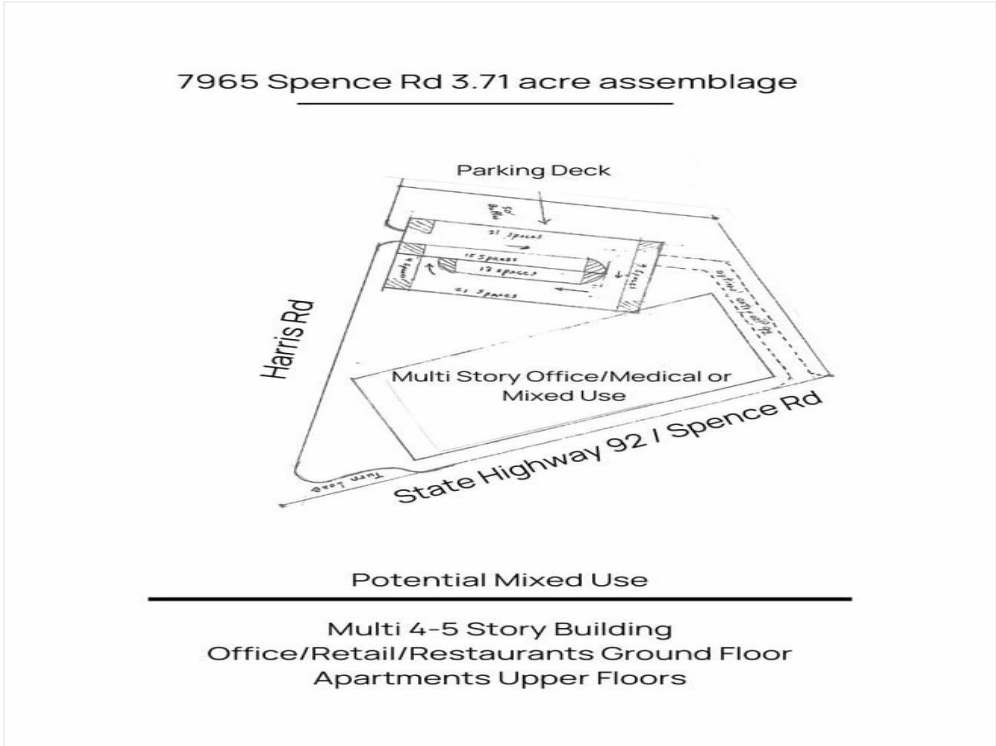


Building Photo

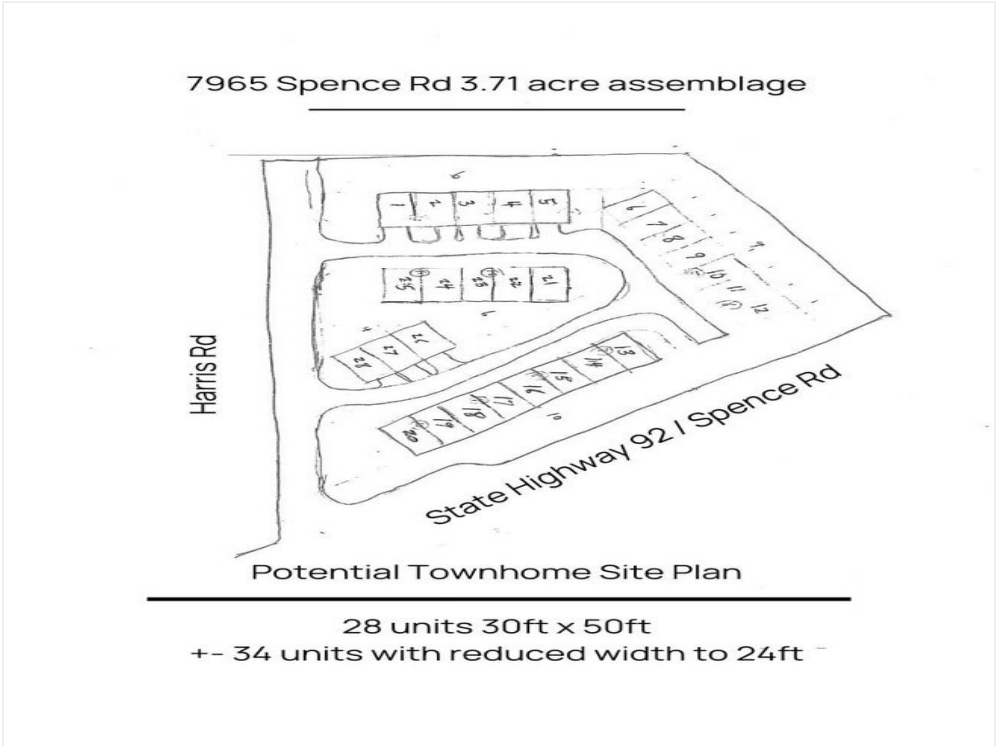
High Growth Area, 3.71 acres, South Fulton

7965 Spence Rd, Fairburn, GA 30213

Property Photos



Building Photo



Building Photo

High Growth Area, 3.71 acres, South Fulton

7965 Spence Rd, Fairburn, GA 30213

Property Photos



Signage



Traffic West

High Growth Area, 3.71 acres, South Fulton

7965 Spence Rd, Fairburn, GA 30213

Property Photos



Traffic East - Corner



Corner Satellite Larger

High Growth Area, 3.71 acres, South Fulton

7965 Spence Rd, Fairburn, GA 30213

Property Photos



Plat Cropped

High Growth Area, 3.71 acres, South Fulton

7965 Spence Rd, Fairburn, GA 30213



Beverly Chandler
chandler.bev@gmail.com
(770) 330-5597

**eXp Realty Associates,
LLC.**

1230 Peachtree St NE
Atlanta, GA 30309