

±5,636 SF 2ND FLOOR CREATIVE OFFICE LOFT

5528B PACHECO BLVD, SUITE B, PACHECO, CA 94553

LOCATED IN PACHECO, BETWEEN MARTINEZ AND CONCORD



Matt Hatfield

Senior Director

925.296.3310

matt.hatfield@tricommercial.com

LIC: #01937755

John Sechser

Managing Director

East Bay Retail Services

925.296.3368

john.sechser@tricommercial.com

LIC: #00829597

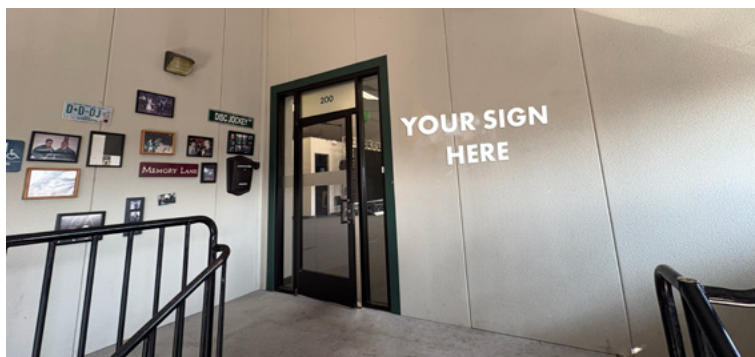
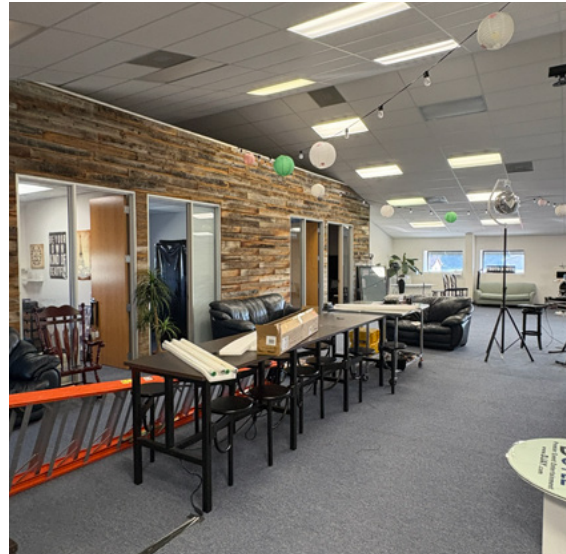


5528B PACHECO BLVD

PROFESSIONAL OFFICE CREATIVE LOFT FOR LEASE

The Offering

- Available: 30 days
- ±5,636 SF
- Lease Rate: \$1.85 psf MG (net of janitorial)
- Must see creative space!
- High Ceilings
- 8 Private offices
- Open space with stage area
- Living room space
- Conference room
- Unmatched cool factor space!
- Former DJ space

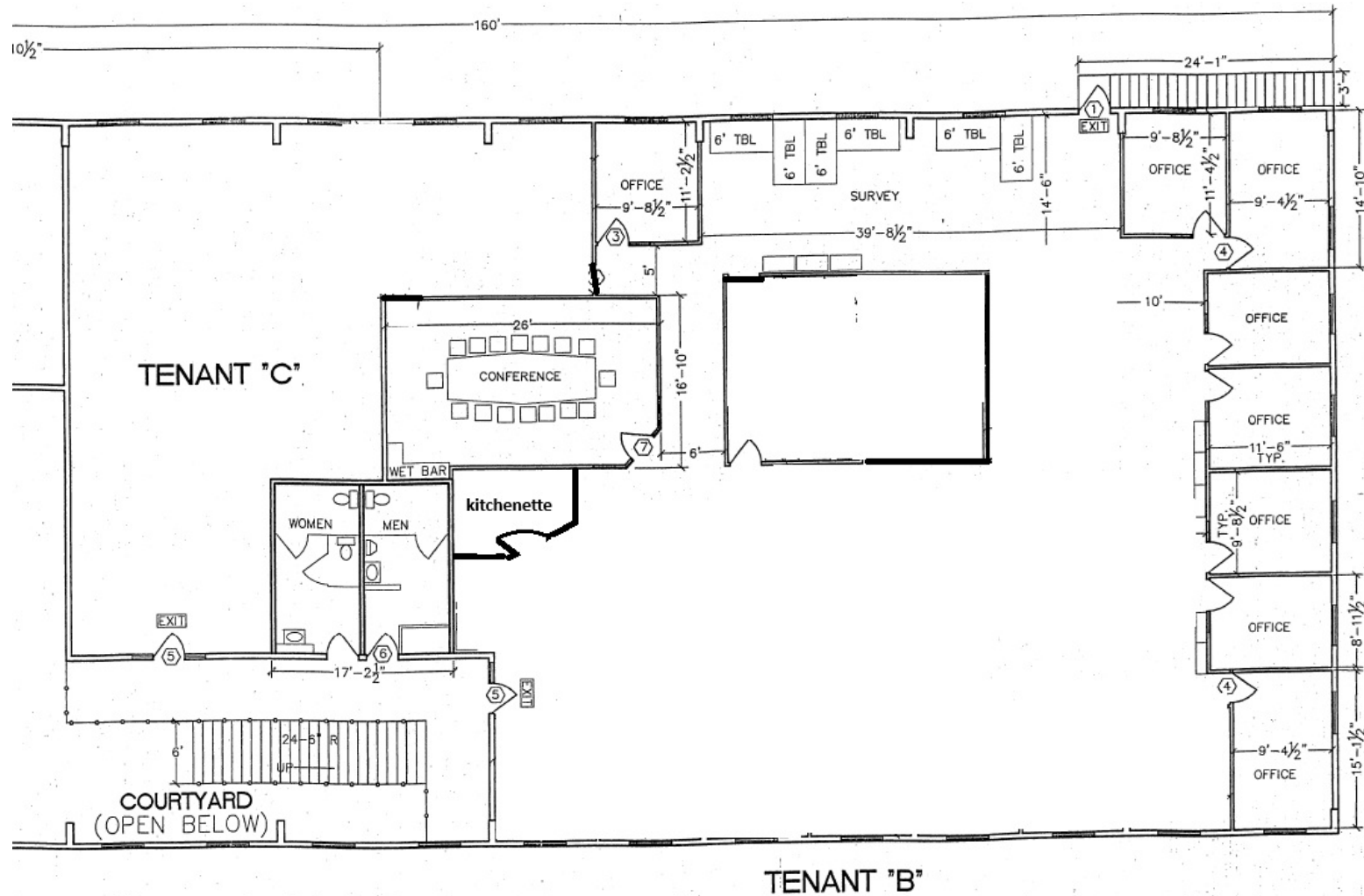


Matt Hatfield
925-296-3310
matt.hatfield@tricommercial.com
LIC: #01937755

John Sechser
925.296.3368
john.sechser@tricommercial.com
LIC: #00829597

5528B PACHECO BLVD

PROFESSIONAL OFFICE
CREATIVE LOFT FOR LEASE



*All measurements not to be relied upon.

Matt Hatfield
925-296-3310
matt.hatfield@tricommercial.com
LIC: #01937755

John Sechser
925.296.3368
john.sechser@tricommercial.com
LIC: #00829597

TRI CORFAC
INTERNATIONAL
COMMERCIAL
www.tricommercial.com

5528B PACHECO BLVD

PROFESSIONAL OFFICE
CREATIVE LOFT FOR LEASE



Matt Hatfield

925-296-3310
matt.hatfield@tricommercial.com
LIC: #01937755

John Sechser

925.296.3368
john.sechser@tricommercial.com
LIC: #00829597



www.tricommercial.com

5528B PACHECO BLVD

PROFESSIONAL OFFICE
CREATIVE LOFT FOR LEASE



Matt Hatfield

925-296-3310
matt.hatfield@tricommercial.com
LIC: #01937755

John Sechser

925.296.3368
john.sechser@tricommercial.com
LIC: #00829597



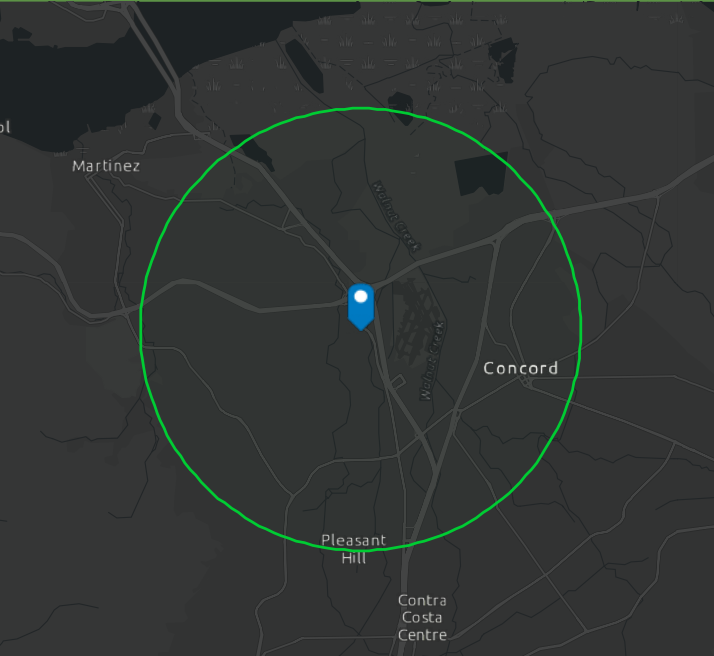
www.tricommercial.com

5528B PACHECO BLVD

PROFESSIONAL OFFICE CREATIVE LOFT FOR LEASE

DEMOGRAPHIC PROFILE

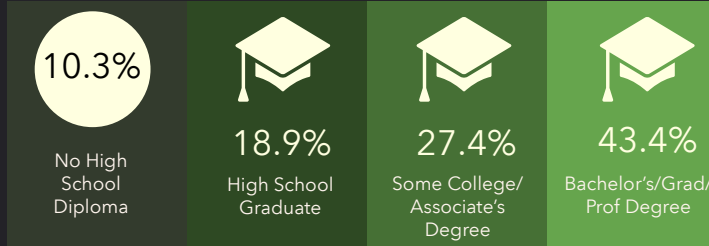
5528 Pacheco Blvd, Pacheco, California, 94553 2
Ring of 3 miles



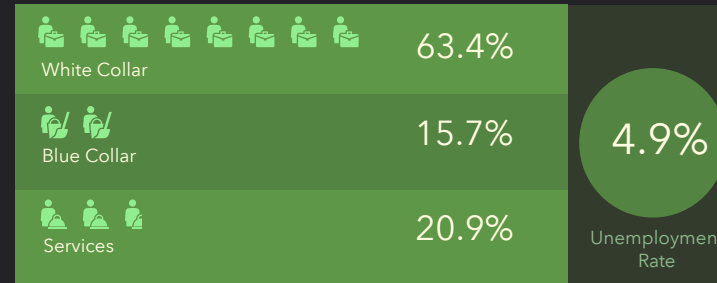
Source: This infographic contains data provided by Esri (2025, 2030).

© 2026 Esri

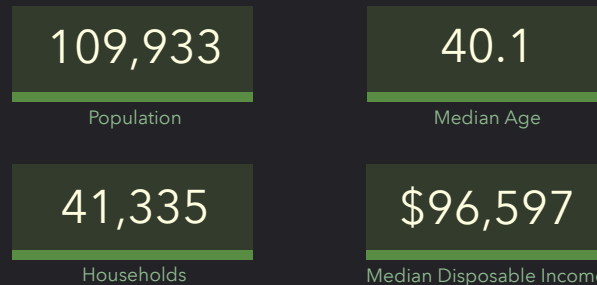
EDUCATION



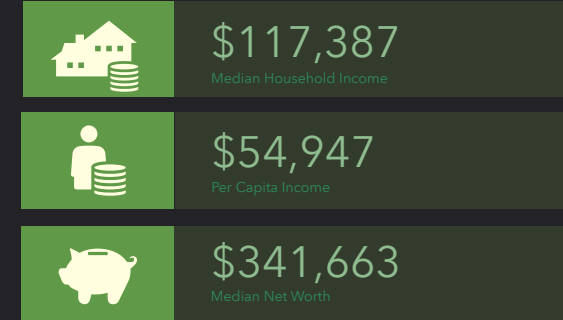
EMPLOYMENT



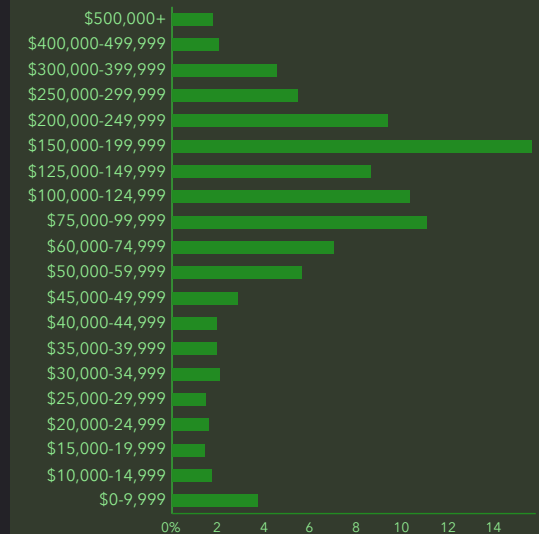
KEY FACTS



INCOME



HOUSEHOLD INCOME



Matt Hatfield
925-296-3310
matt.hatfield@tricommercial.com
LIC: #01937755

John Sechser
925.296.3368
john.sechser@tricommercial.com
LIC: #00829597

