

FOR SALE

PRIME INDUSTRIAL SITE

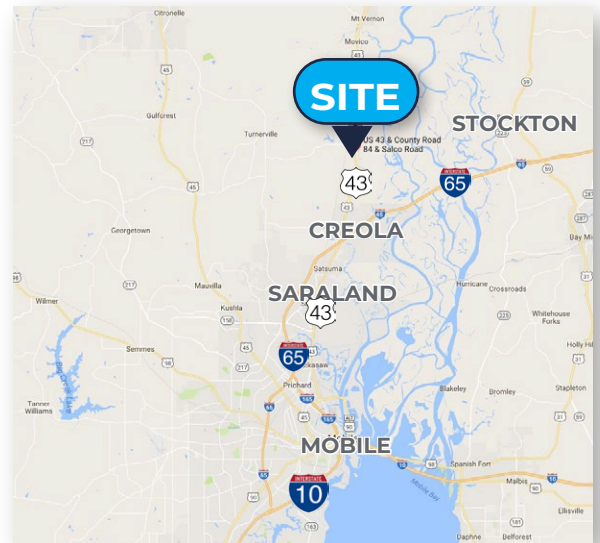
NWC Salco Rd. & HWY 43 | Axis, AL



Property Features

- Available: 170± AC— DIVISIBLE!
- 2,750'± frontage of Highway 43
- Rare cross street hard corner with a traffic light in AM/NS Calvert corridor
- 22 miles from Port of Mobile
- Rail service directly into Port
- Sewer, water, gas & power in place
- AT&T Fiber Ready
- Brand new CEFCO at the corner of Highway 43 & Salco Road
- One of two cross streets to Celeste Road
- Flat & Dry

CALL BROKER FOR PRICING



Demographics: Drive-Times

2024	5 Min.	10 Min.	15 Min.
Total Businesses	13	49	307
Total Employees	820	1,923	4,333
Population	115	1,594	13,751

Source: U.S. Census Bureau via © 2025 ESRI

Allan R. Cameron, Jr., SIOR
 251.751.9553 | acameron@cre-mobile.com





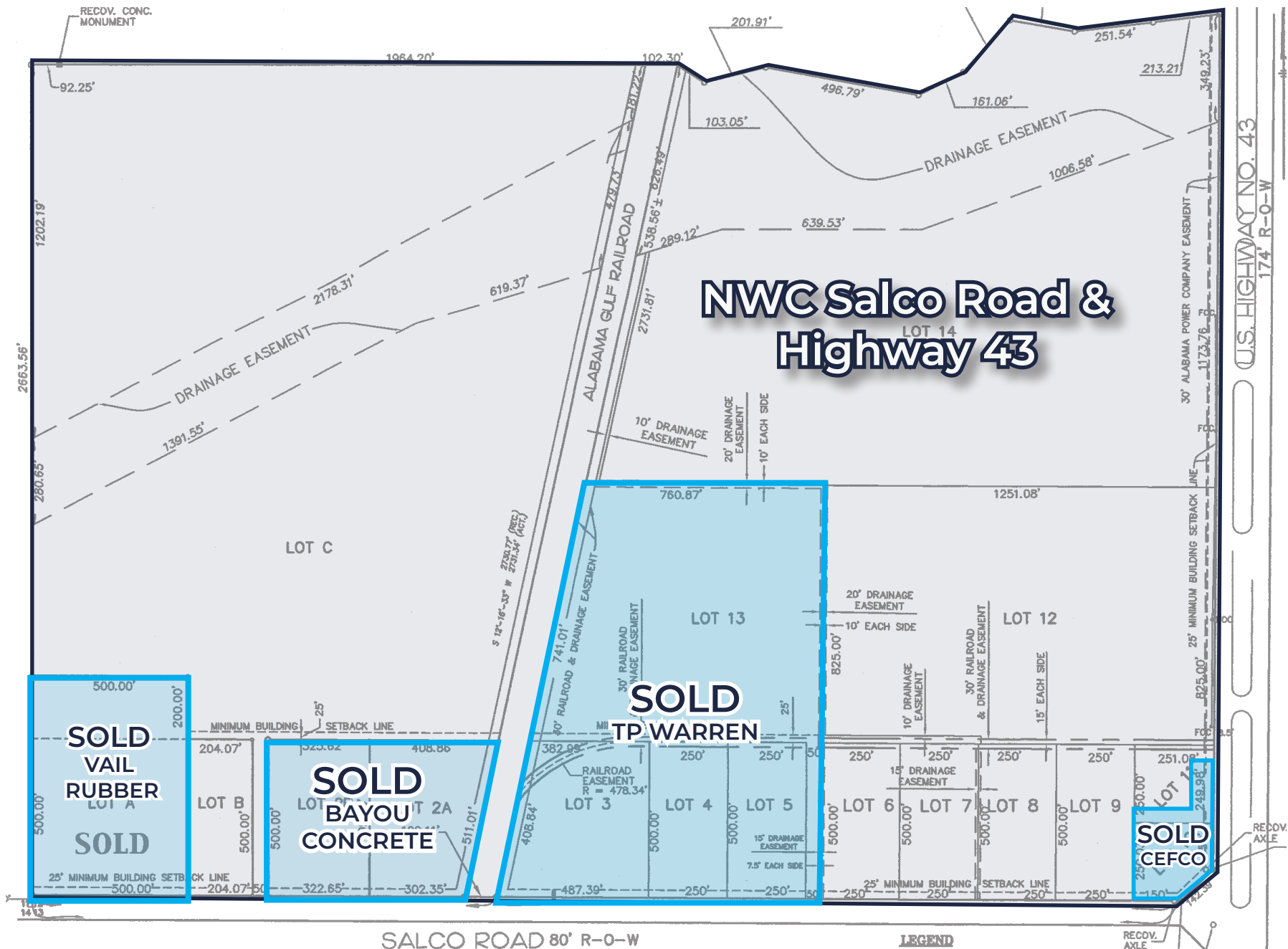
Location Description

Up to 227± AC available at the NWC of Salco Rd. (CR 84) and US Highway 43. The US Highway 43 corridor between the I-65 junction and Washington County limits is known as a prime area for industrial, chemical and manufacturing facilities, such as Lenzing Fibers, who recently announced a \$291mm expansion, and AM/NS Calvert, formerly known as Thyssenkrupp on a 1,500 acre site with 1,525 employees. The subject site is ideal for industrial.

Lenzing Fibers	0.5 miles
Celeste Rd.	6.2 miles
I-65	6.8 miles
AM/NS Calvert	14.1 miles
I-165	16.6 miles
Port of Mobile	22.1 miles
I-10	22.6 miles
Pascagoula, MS	55 miles
Pensacola, FL	72 miles



NO WARRANTY OR REPRESENTATION, EXPRESS OR IMPLIED, IS MADE AS TO THE ACCURACY OF THE INFORMATION CONTAINED HEREIN, AND THE SAME IS SUBMITTED SUBJECT TO ERRORS, OMISSIONS, CHANGE OF PRICE, RENTAL OR OTHER CONDITIONS, PRIOR SALE, LEASE OR FINANCING, OR WITHDRAWAL WITHOUT NOTICE, AND OF ANY SPECIAL LISTING CONDITIONS IMPOSED BY OUR PRINCIPALS. NO WARRANTIES OR REPRESENTATIONS ARE MADE AS TO THE CONDITION OF THE PROPERTY NOR ANY HAZARDS CONTAINED THEREIN ARE ANY TO BE IMPLIED.



NO WARRANTY OR REPRESENTATION, EXPRESS OR IMPLIED, IS MADE AS TO THE ACCURACY OF THE INFORMATION CONTAINED HEREIN, AND THE SAME IS SUBMITTED SUBJECT TO ERRORS, OMISSIONS, CHANGE OF PRICE, RENTAL OR OTHER CONDITIONS, PRIOR SALE, LEASE OR FINANCING, OR WITHDRAWAL WITHOUT NOTICE, AND OF ANY SPECIAL LISTING CONDITIONS IMPOSED BY OUR PRINCIPALS. NO WARRANTIES OR REPRESENTATIONS ARE MADE AS TO THE CONDITION OF THE PROPERTY NOR ANY HAZARDS CONTAINED THEREIN ARE ANY TO BE IMPLIED.