

39415

EIGHTH STREET

380,410 SF FOR SALE OR LEASE (DIVISIBLE)
STATE-OF-THE-ART INDUSTRIAL
WITH RAIL POTENTIAL



CBRE

Project Highlights

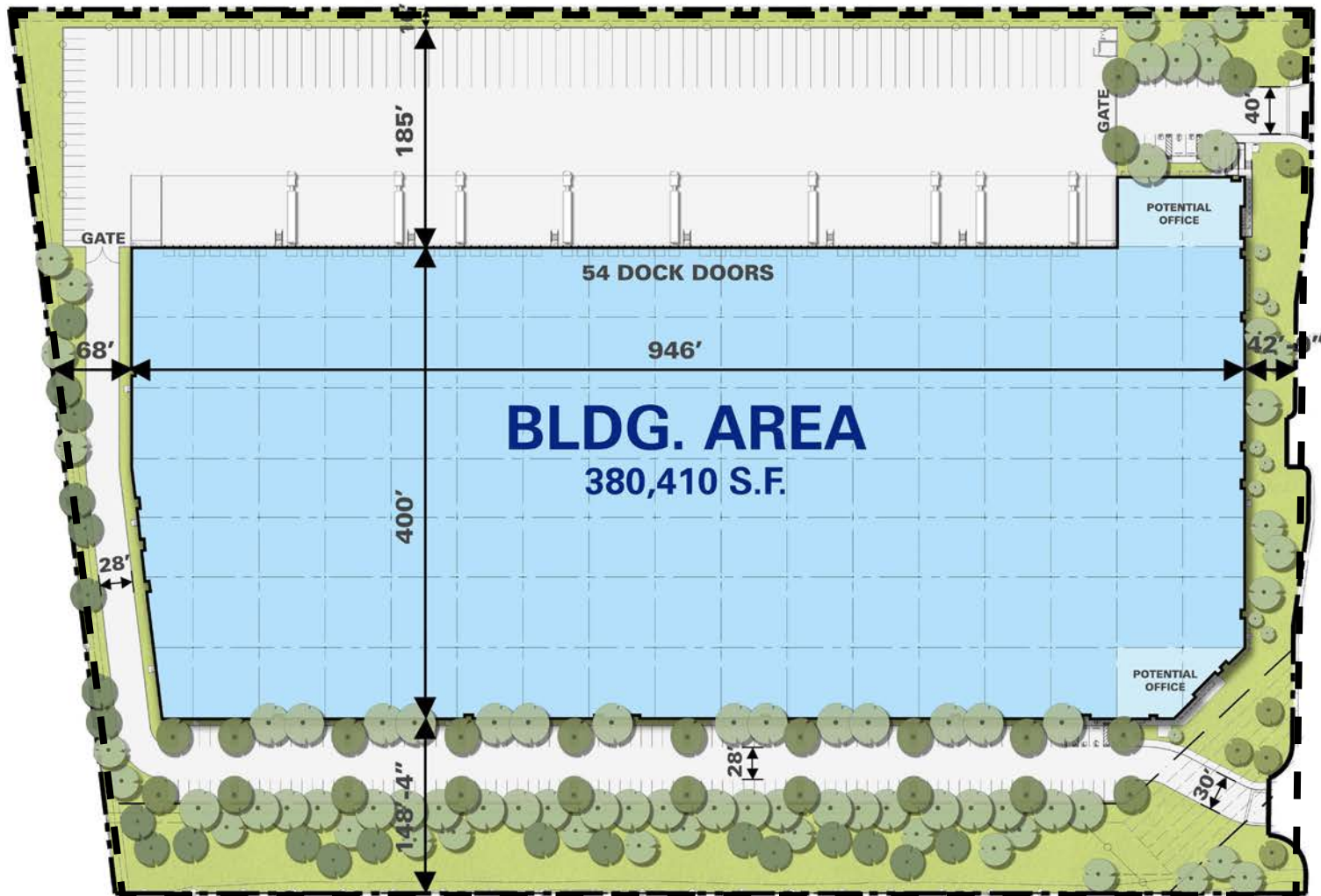
- 380,410 SF
- Lease Rate: TBD
- Sale Price: TBD
- Office: 6,000 SF
- 54 Dock High Loading Positions
- 2 Grade Level Loading Doors
- 36' Clear Height
- 204 Parking Spaces
- HI Zoning (Heavy Industrial)
- Divisible
- Potential Rail Service (Union Pacific)

State-of-the-Art
Industrial

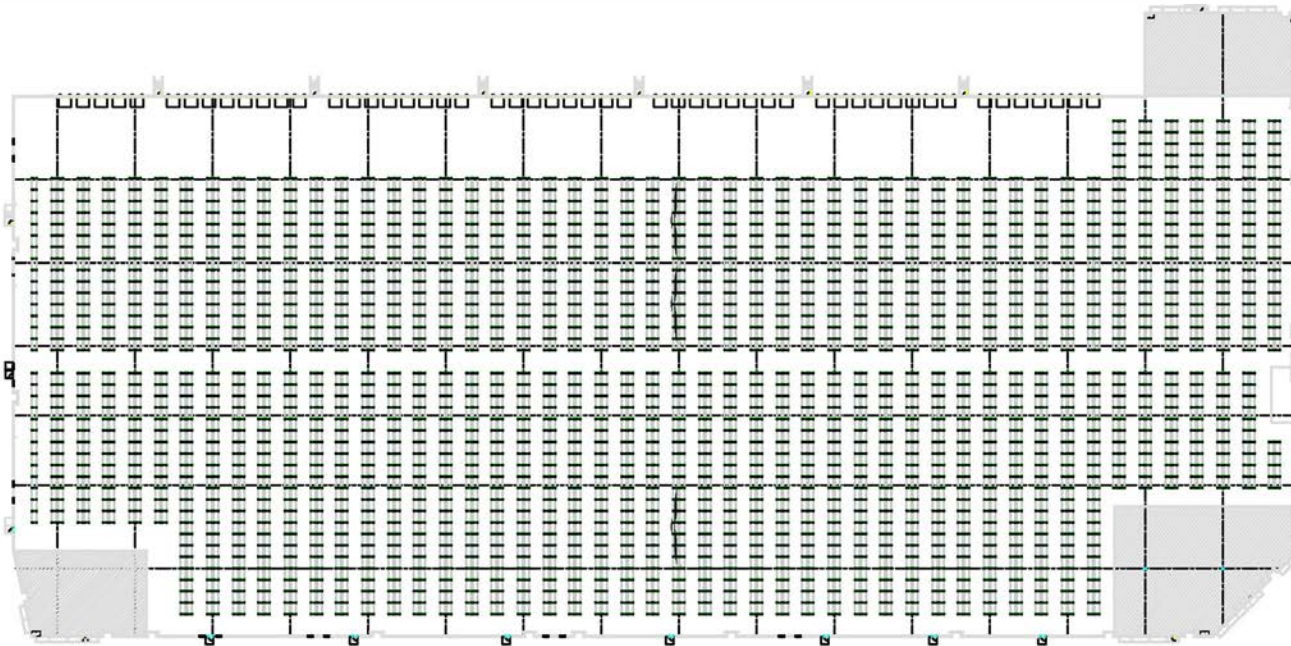
380,410 SF



Site Plan



Racking Design



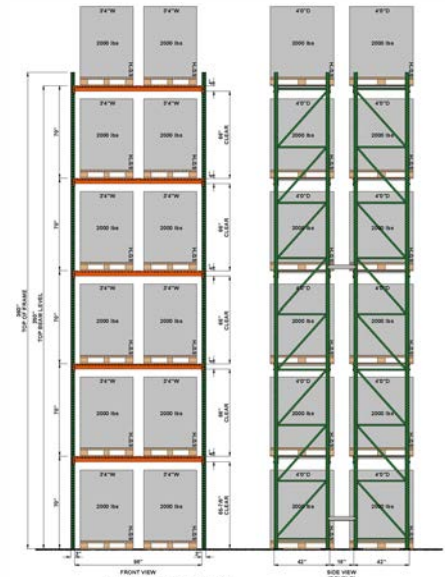
Total Pallet Positions (as shown)

- Approximately 45,000 Pallet Positions (56" Tall Pallet)
- Approximately 39,000 Pallet Positions (64" Tall Pallet)
- Approximately 32,600 Pallet Positions (72" Tall Pallet)

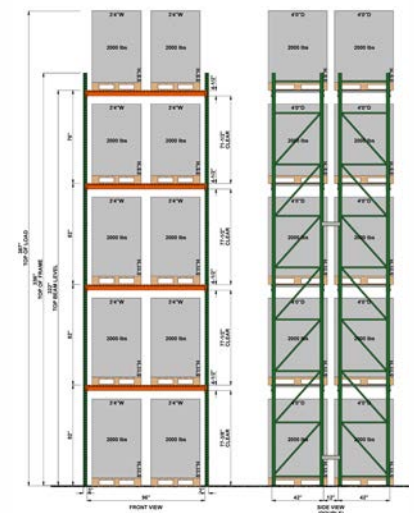
RAYMOND | **WEST**
INTRALOGISTICS SOLUTIONS

No warranty or representation is made to the accuracy of the conceptual racking plan or rendering racking plan. No liability of any kind is to be imposed on the broker or owner herein and shall not be held responsible for any decisions made based on such information.

60" TALL PALLET



72" TALL PALLET



City of Palmdale

LAEDC'S Most Business Friendly City

- Readily Available Skilled & Motivated Work Force
- Established Aerospace, Industrial, Distribution & Manufacturing User Base
- Easily Accessible Regional Highway Infrastructure
- Growing & Developing Region of LA County

Antelope Valley Facts & Demographics



Total Population:

541,511 (2021)

561,336 (2026 Projection)



Median Age

33.9



Education

High School / GED 95,661 (27.4%)

Some College 92,873 (26.60%)

Bachelor's Degree 39,444 (11.30%)

Master's Degree 16,368 (4.69%)



Average Household Size

3.2



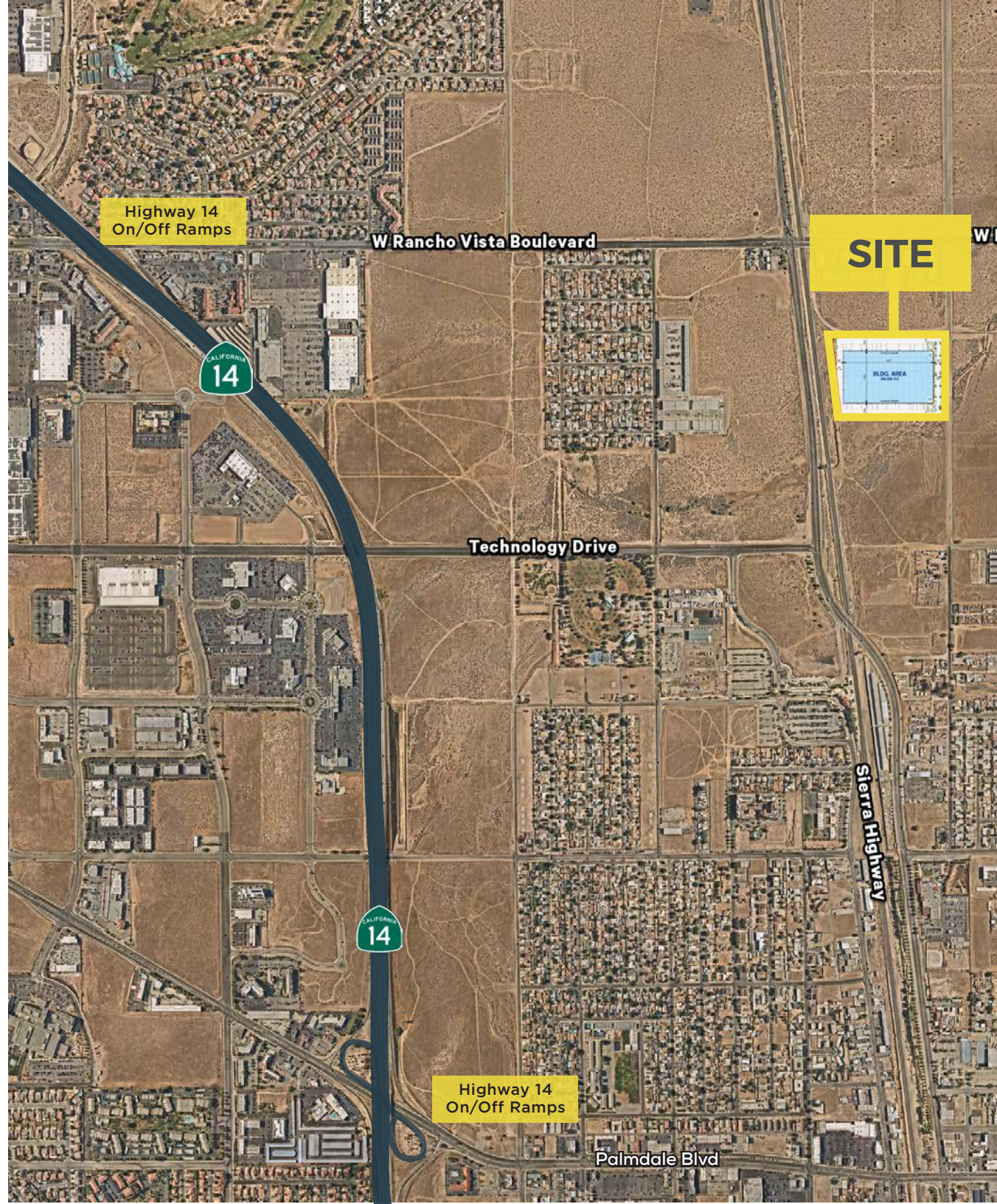
Average Household Income

\$82,790



LOCATION IS
EVERYTHING

**39415 EIGHTH
STREET** OFFERS
IMMEDIATE ACCESS
TO REGIONAL
HIGHWAY
INFRASTRUCTURE

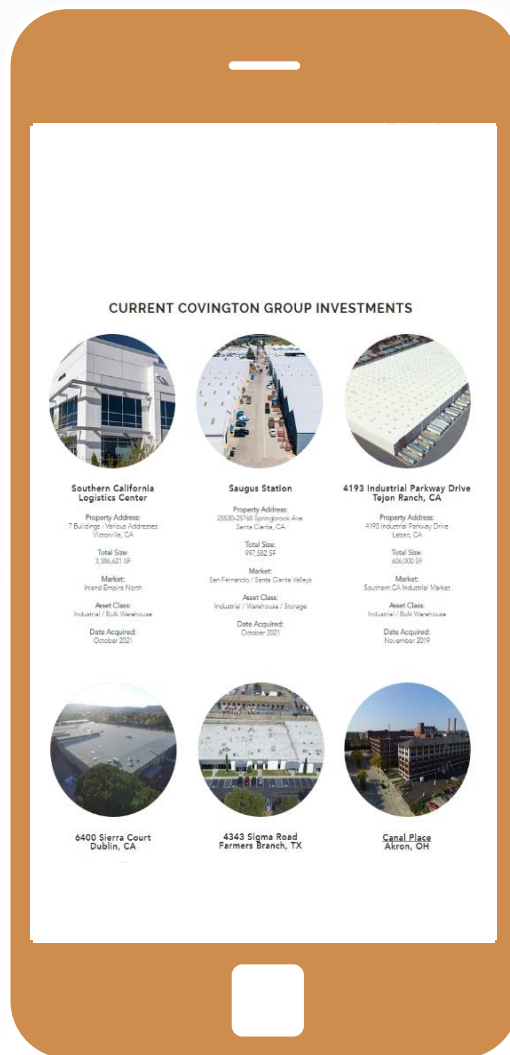


Covington Group

Experienced Team. Nationwide Reach.

Covington Group, Inc. is a privately held, Dallas based real estate development and investment company that specializes in redeveloping and repositioning distressed property across the United States. We are a value-add, opportunistic investor committed to creating superior returns on investment by mitigating risk and preserving capital through innovation, persistence, creativity and focus on core competencies.

Throughout the last 30 years, Covington Group, Inc. has focused on the acquisition of corporate dispositions, REOs, and other types of vacant or distressed properties, with the intent of recycling and re-tenanting these properties. Our partners have over 80 years of combined experience and have successfully developed and redeveloped over 25 million square feet of commercial and industrial property, including build-to-suit and spec warehouses, hotels, and master planned communities. Covington Group, Inc. and our affiliate companies/partners currently own over 8,500,000 SF of commercial/industrial space across the U.S.



Covington Development Partners (“CDP”) is the development arm of Covington Group’s fully integrated industrial real estate platform. Founded in 1989, Covington Group specializes in the acquisition, development and management of warehouse, distribution, manufacturing and e-commerce facilities across the nation.

For More Information

For more information on Covington Group, visit their website at <https://www.covingtongroupinc.com>.

39415

EIGHTH STREET

39415 8th Street East Corporate Neighbors

39415 8th Street East enjoys a strategic location in the City of Palmdale, placing your business at the center of a prominent and growing corporate community. Corporate neighbors include, but not limited to:

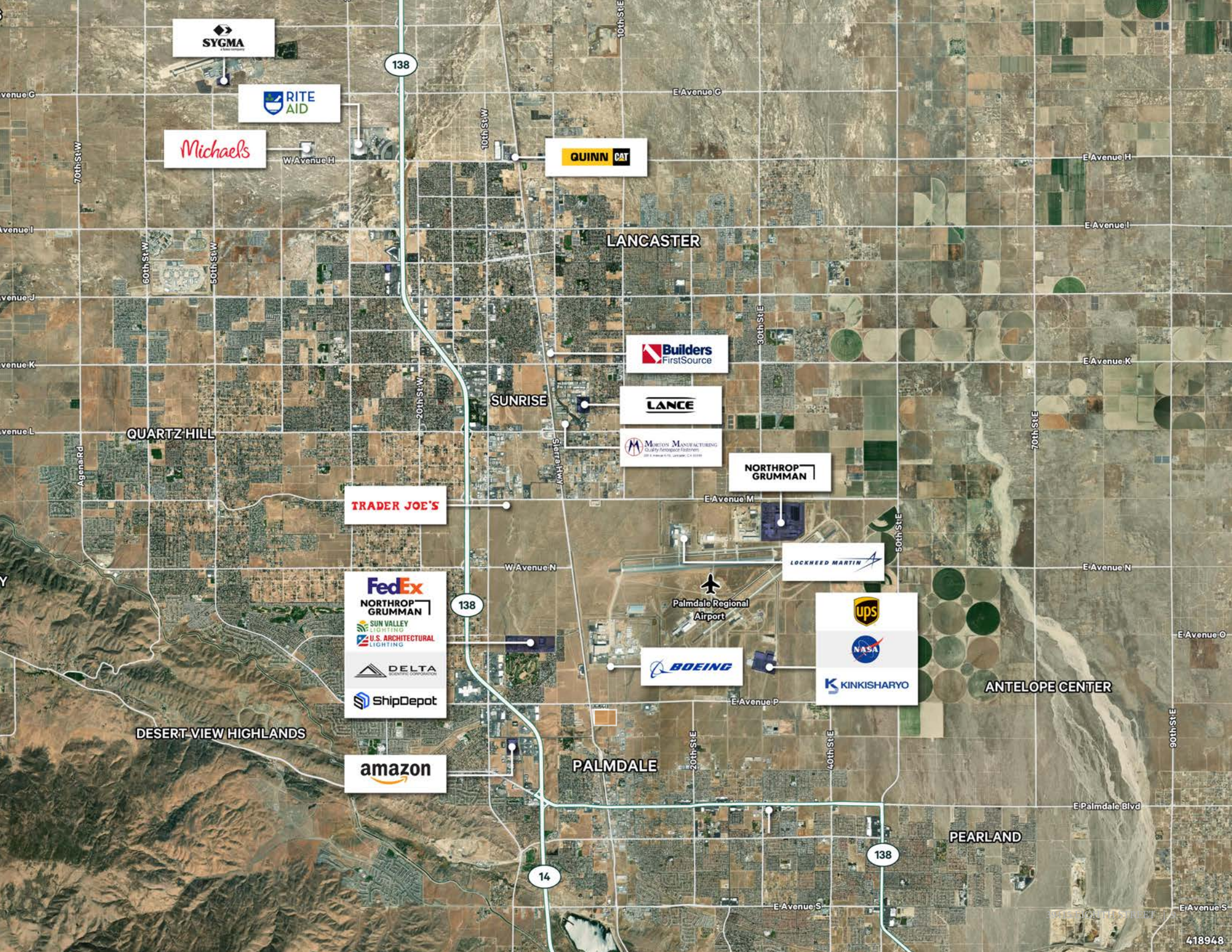
Distribution Centers

- Trader Joes
- Rite Aid
- Michaels
- Sygma

Aerospace & Defense

- Northrop Grumman
- Lockheed Martin
- Boeing
- NASA
- Delta Scientific
- BAE Systems
- Airo Industries





SYGMA

RITE
AID

Michaels

QUINN CAT

LANCASTER

Builders
FirstSource

LANCE

MORTON MANUFACTURING
Quality Aerospace Fasteners
800-4-AEROSPACE • 661-255-1111

NORTHROP
GRUMMAN

TRADER JOE'S

FedEx
NORTHROP
GRUMMAN
SUN VALLEY
LIGHTING
U.S. ARCHITECTURAL
LIGHTING

DELTA
SCIENTIFIC CORPORATION
ShipDepot

amazon

Palmdale Regional
Airport

BOEING

LOCKHEED MARTIN

ups
NASA
KINKISHARYO

ANTELOPE CENTER

PALMDALE

PEARLAND

39415

EIGHTH
STREET

For more information, please contact:

CRAIG PETERS

Vice Chairman
Lic. 00906542
+1 818 907 4616
craig.peters@cbre.com

RICHARD RAMIREZ

First Vice President
Lic. 01792270
T: +1 818 907 4639
richard.ramirez@cbre.com

CBRE

© 2025 CBRE, Inc. This information has been obtained from sources believed reliable. We have not verified it and make no guarantee, warranty or representation about it. Any projections, opinions, assumptions or estimates used are for example only and do not represent the current or future performance of the property. You and your advisors should conduct a careful, independent investigation of the property to determine to your satisfaction the suitability of the property for your needs. Photos herein are the property of their respective owners and use of these images without the express written consent of the owner is prohibited. CBRE and the CBRE logo are service marks of CBRE, Inc. and/or its affiliated or related companies in the United States and other countries. All other marks displayed on this document are the property of their respective owners.