



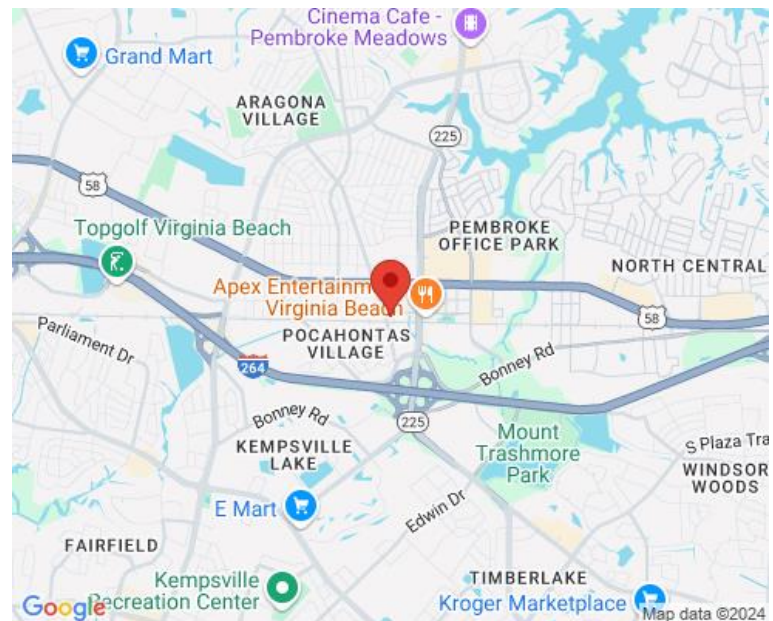
PROPERTY OVERVIEW

AREA MAP

Columbus 4705 is a three-story, brick and glass, professional office building located in the Virginia Beach Central Business District.

- Immediate access to I-264 at Independence/Pembroke
- Secure access 24/7

AVAILABLE: Professional 1,200 SF office space located on the third floor



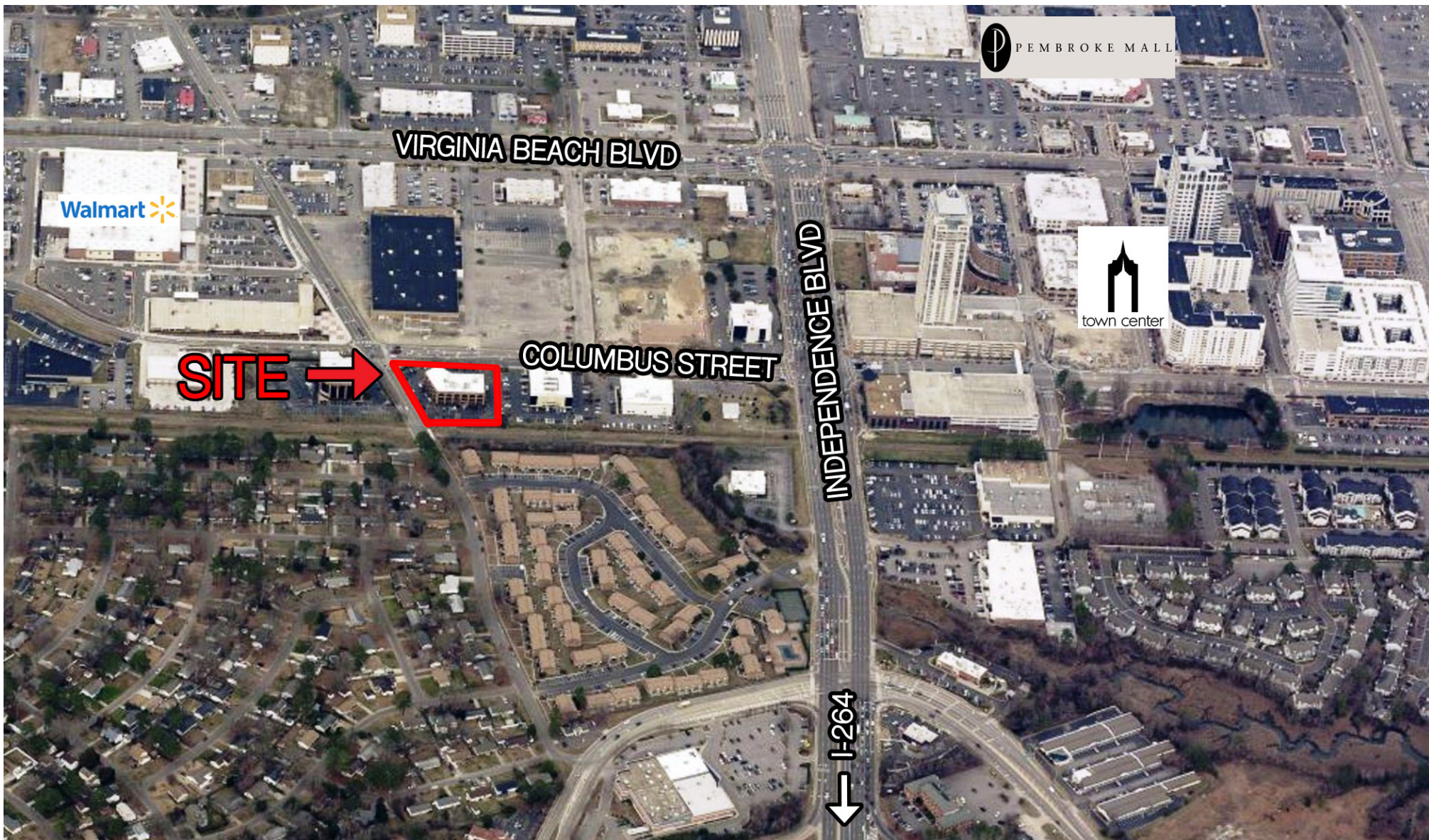
FOR MORE INFORMATION, PLEASE CONTACT:

COLE WERKHEISER
(757) 490-3141
cwerkheiser@pembrokerealty.com

Pembroke Realty Group
4433 Corporation Lane, Suite 250
Virginia Beach, VA 23462
www.pembrokerealty.com

Columbus 4705

± 1,200 SF AVAILABLE



FOR MORE INFORMATION, PLEASE CONTACT:

COLE WERKHEISER

(757) 490-3141

cwerkheiser@pembrokerealty.com

Pembroke Realty Group

4433 Corporation Lane, Suite 250

Virginia Beach, VA 23462

www.pembrokerealty.com