

Office | For Sublease

CBRE

75 Port City Landing

3,700 SF Available, Suite 420

75 Port City Landing
Mt Pleasant, SC 29464

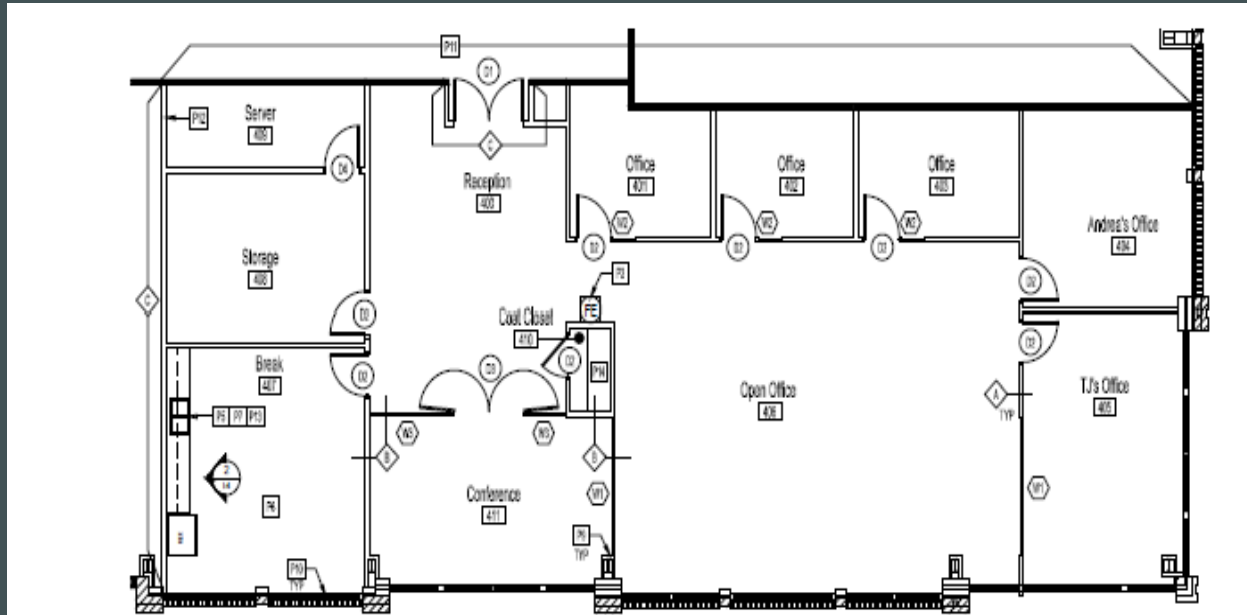
Beautiful Views of the Wando River and the Arthur Ravenel Bridge



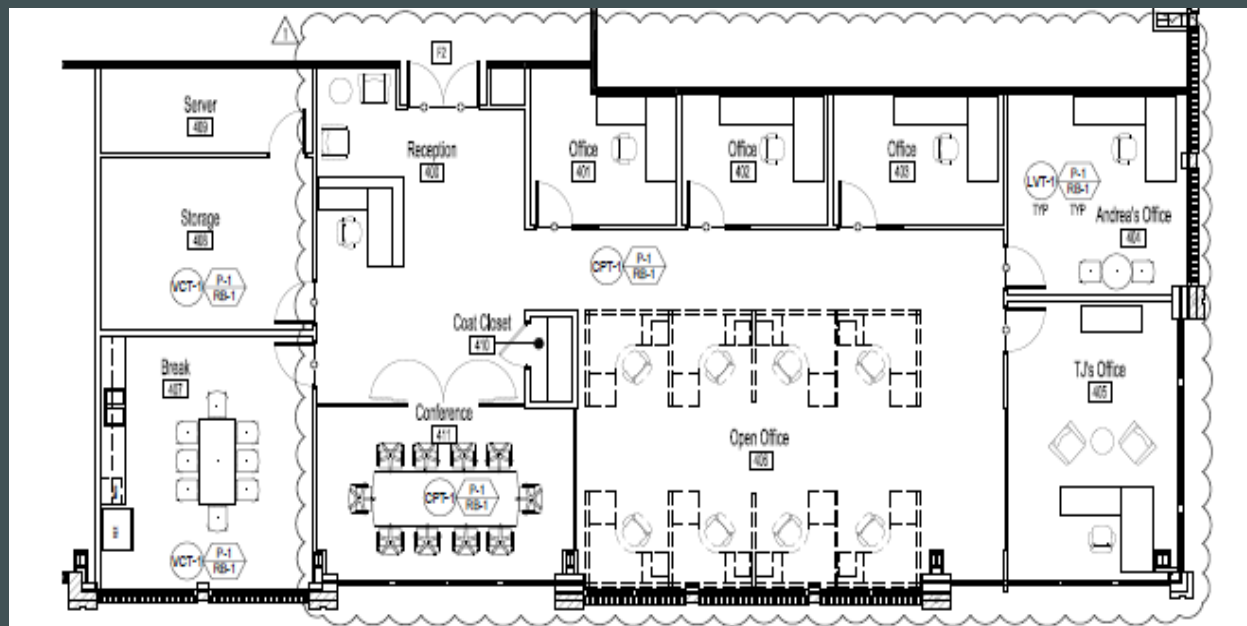
Interior Photos



Floor Plan



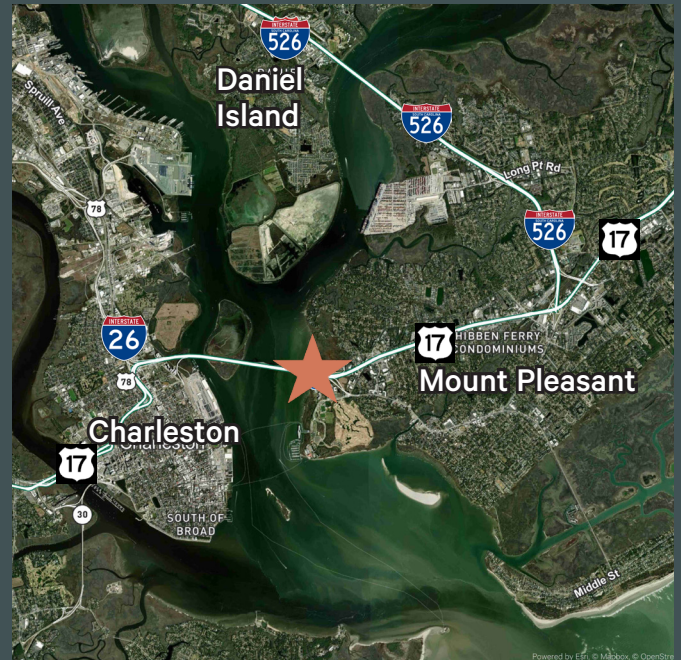
Optional Floorplan with Cubes:



Highlights

Portside at Ferry Wharf is a 5-story Class A Office Building located just over the Arthur Ravenel Jr Bridge in Mount Pleasant. Ferry Wharf is a master planned, mixed use development consisting of office, retail, and residential projects.

- + Beautiful views of the Wando River and Arthur Ravenel Bridge
- + 24 Hour Access with Property Manager on-site
- + Close proximity to various shopping, lodging and dining locations
- + Great access to Downtown Charleston, I-26, and I-526
- + Abundant Natural Light
- + Full Service Sublease
- + Lease Expires 10/31/30
- + Can be subleased fully furnished
- + Eleven parking cards for adjacent parking garage included at no additional cost
- + Provides 5 private offices, 8 cubes, reception area, conference room, IT room, storage room, and large kitchen/breakroom
- + \$54.00/SF
- + Tenant to pay increases in OPEX over base year amount
- + 3,700 SF, Suite 420



\$54.00

Per Square Foot

3,700

SF, Suite 420

Contact Us

Charles Carmody
Senior Vice President
+1 843 577 1155
charles.carmody@cbre.com

Ryan Carmody
Vice President
+1 843 577 1162
ryan.carmody@cbre.com

© 2025 CBRE, Inc. All rights reserved. This information has been obtained from sources believed reliable, but has not been verified for accuracy or completeness. You should conduct a careful, independent investigation of the property and verify all information. Any reliance on this information is solely at your own risk. CBRE and the CBRE logo are service marks of CBRE, Inc. All other marks displayed on this document are the property of their respective owners, and the use of such logos does not imply any affiliation with or endorsement of CBRE. Photos herein are the property of their respective owners. Use of these images without the express written consent of the owner is prohibited.