

1329 HURFFVILLE ROAD

DEPTFORD, NJ 08096



FOR LEASE



FLEX

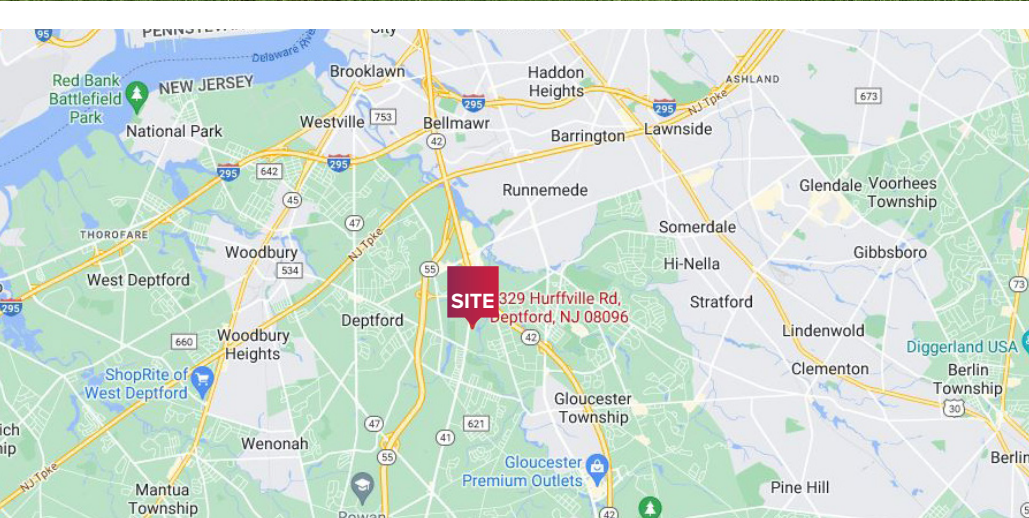


7,237+/- SF



PROPERTY DESCRIPTION

- 7,237+/- SF unit available
- 13' ceiling height
- Ample employee parking
- 965+/- SF office area, Two warehouse restrooms, one office restroom
- Less than 1 mile to Route 42, 1.2 miles to Route 55 (Exit 58), 3.0 miles to the NJ Turnpike (Exit 3), 5.1 miles to I-295 (Exit 25), 6.5 miles to the Walt Whitman Bridge to Philadelphia



FOR MORE INFORMATION

Jonathan Klear

+1 856 433 1801

jonathan.klear@naimertz.com

NAI Mertz

NAI Mertz | 21 Roland Avenue
Mount Laurel, NJ 08054

+1 856 234 9600 | naimertz.com



1329 HURFFVILLE ROAD

DEPTFORD, NJ 08096

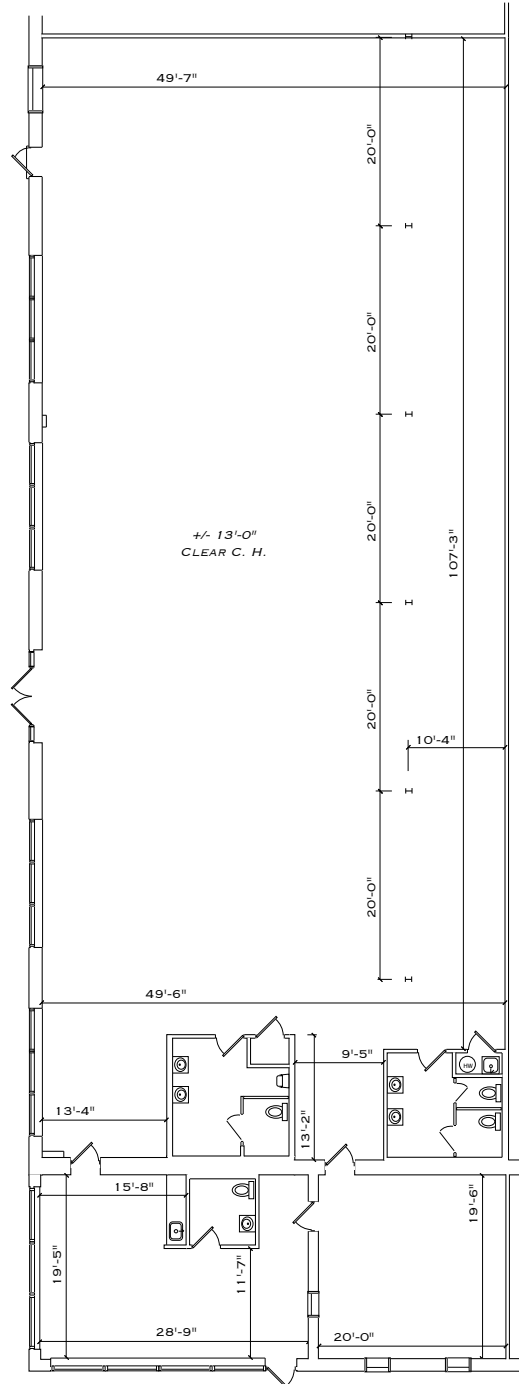


FOR LEASE

FLEX

7,237+/- SF

FLOORPLAN



FOR MORE INFORMATION

Jonathan Klear

+1 856 433 1801

jonathan.klear@naimertz.com

NAIMertz

NAI Mertz | 21 Roland Avenue
Mount Laurel, NJ 08054

+1 856 234 9600 | naimertz.com

