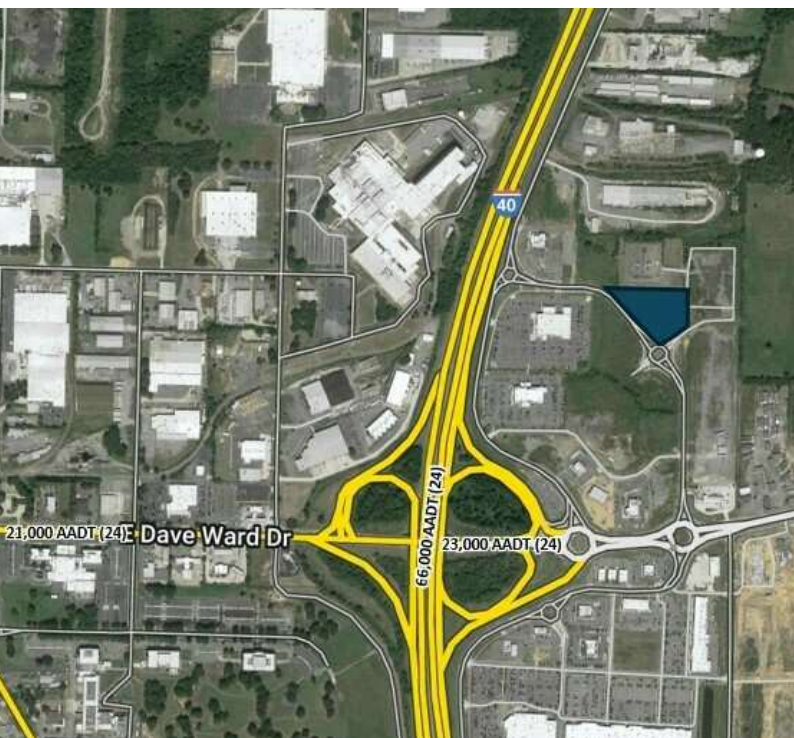


LEWIS RANCH PARCEL 3

CONWAY, AR 72032



PROPERTY DESCRIPTION

Located in the heart of Conway's bustling retail corridor, this 2.2-acre commercial property offers exceptional visibility and easy access from major highways, making it an ideal site for retail, dining, and service-oriented businesses. With a steady flow of local residents and visitors, this prime location ensures high foot traffic and exposure for any establishment. Whether you're looking to expand your business or invest in a growing market, this property offers tremendous potential in a highly sought-after area.

PROPERTY HIGHLIGHTS

- Surrounded by new developments and potential growth opportunities
- Local residents, commuters, and three colleges make for a large target audience
- For the second year in a row, Conway is the fastest growing city in Arkansas with a population over 50,000
- Convenient access from major highways such as I-40 and US 64
- Traffic Counts: Amity Road (8,000 AADT), Dave Ward (36,000 AADT), I-40 (66,000 AADT)

DEMOGRAPHICS	1 MILE	3 MILES	5 MILES
Total Households	583	12,714	27,021
Total Population	1,502	33,599	68,033
Average HH Income	\$71,563	\$61,364	\$72,894

KEVIN MCCOLLUM

501.912.7620

kmccollum@jonesaur.com

JACOB SPEARS

501.940.7204

jspears@jonesaur.com

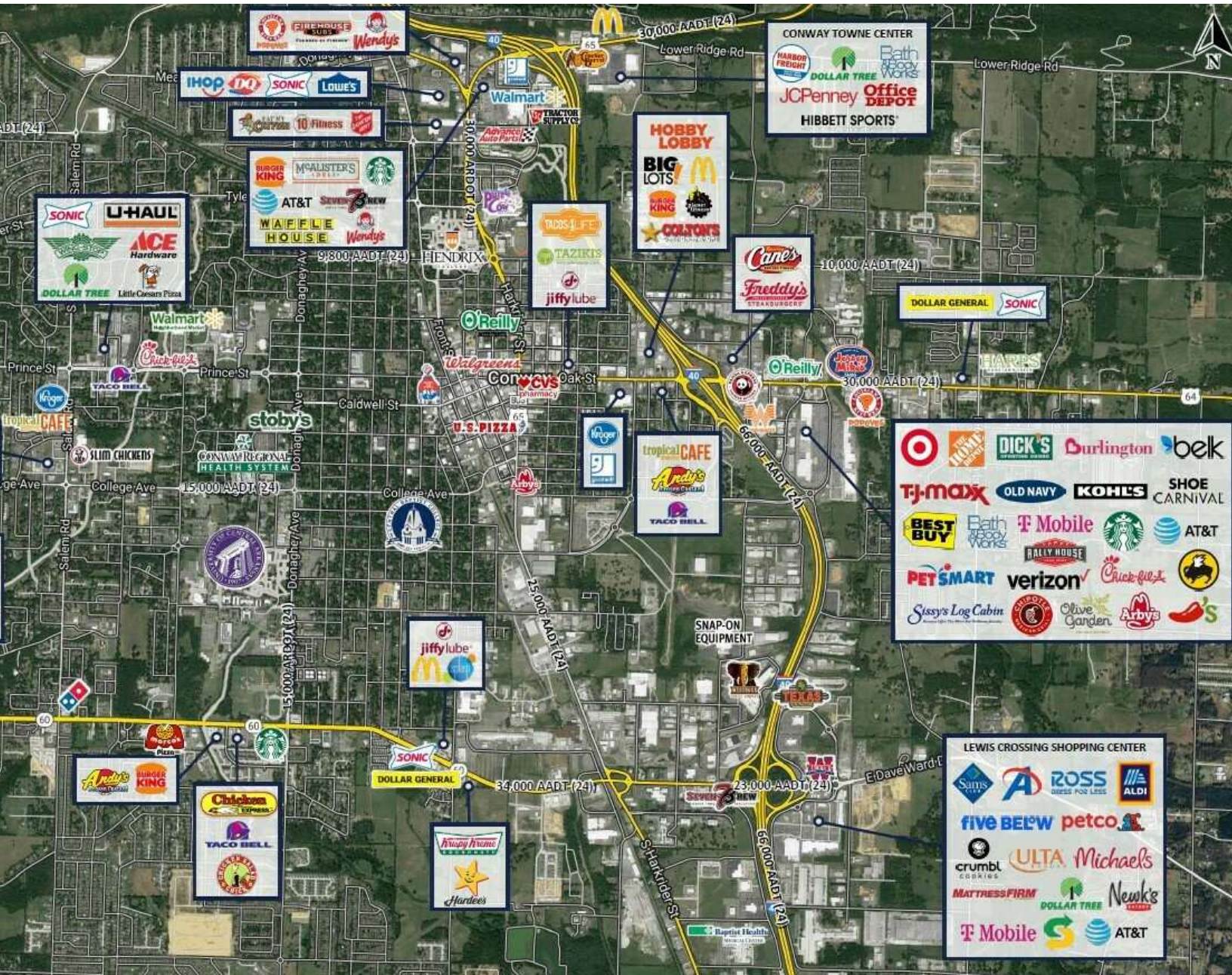
BRITT STROTH

501.301.0113

bstroth@jonesaur.com

LEWIS RANCH PARCEL 3

CONWAY, AR 72032



KEVIN MCCOLLUM

501.912.7620

kmccollum@jonesaur.com

JACOB SPEARS

501.940.7204

jspears@jonesaur.com

BRITT STROTH

501.301.0113

bstroth@jonesaur.com