



# For lease

206 N Longstreet Street,  
Kingstree, SC 29556

± 2,300 SF / ±0.692 AC Available

 **JLL** SEE A BRIGHTER WAY

206 N Longstreet Street, Kingstree, SC 29556

## Property Information

- ± 2,300 SF / 0.692 AC
- Newly constructed Burger King (2020)
- Ample parking with 30 spaces
- Frontage and full access on both Longstreet Street & Mill Street
- Double drive-thru



Estimated population		
1-miles	3-miles	5-miles
<b>2,630</b>	<b>6,587</b>	<b>9,457</b>

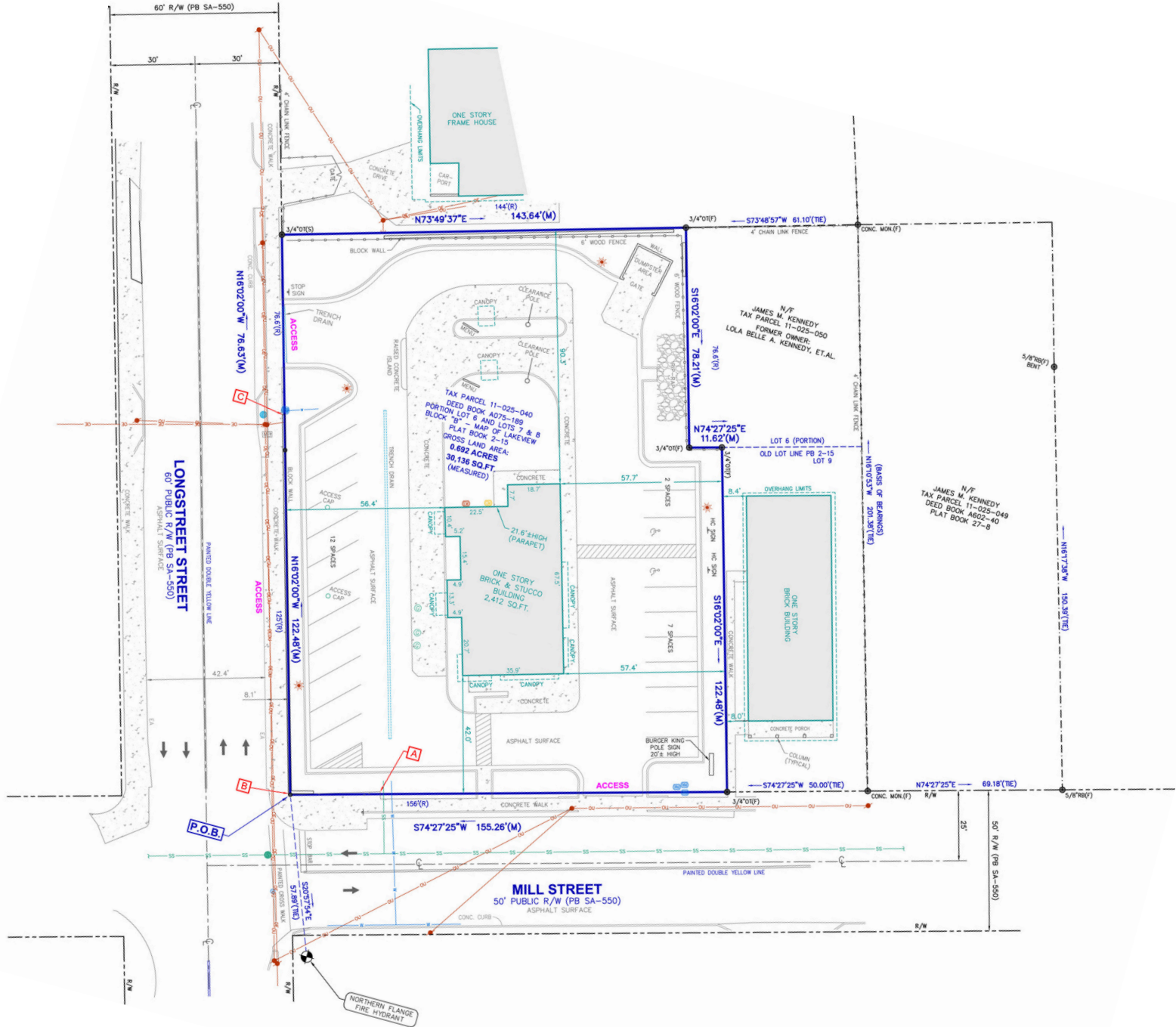
Number of households		
1-miles	3-miles	5-miles
<b>1,197</b>	<b>2,789</b>	<b>4,063</b>

Average household income		
1-miles	3-miles	5-miles
<b>\$58,263</b>	<b>\$59,329</b>	<b>\$60,420</b>

Median age		
1-miles	3-miles	5-miles
<b>43.3</b>	<b>43.1</b>	<b>44.2</b>



# Site Survey





# Area Overview



DENSE  
RESIDENTIAL  
AREA



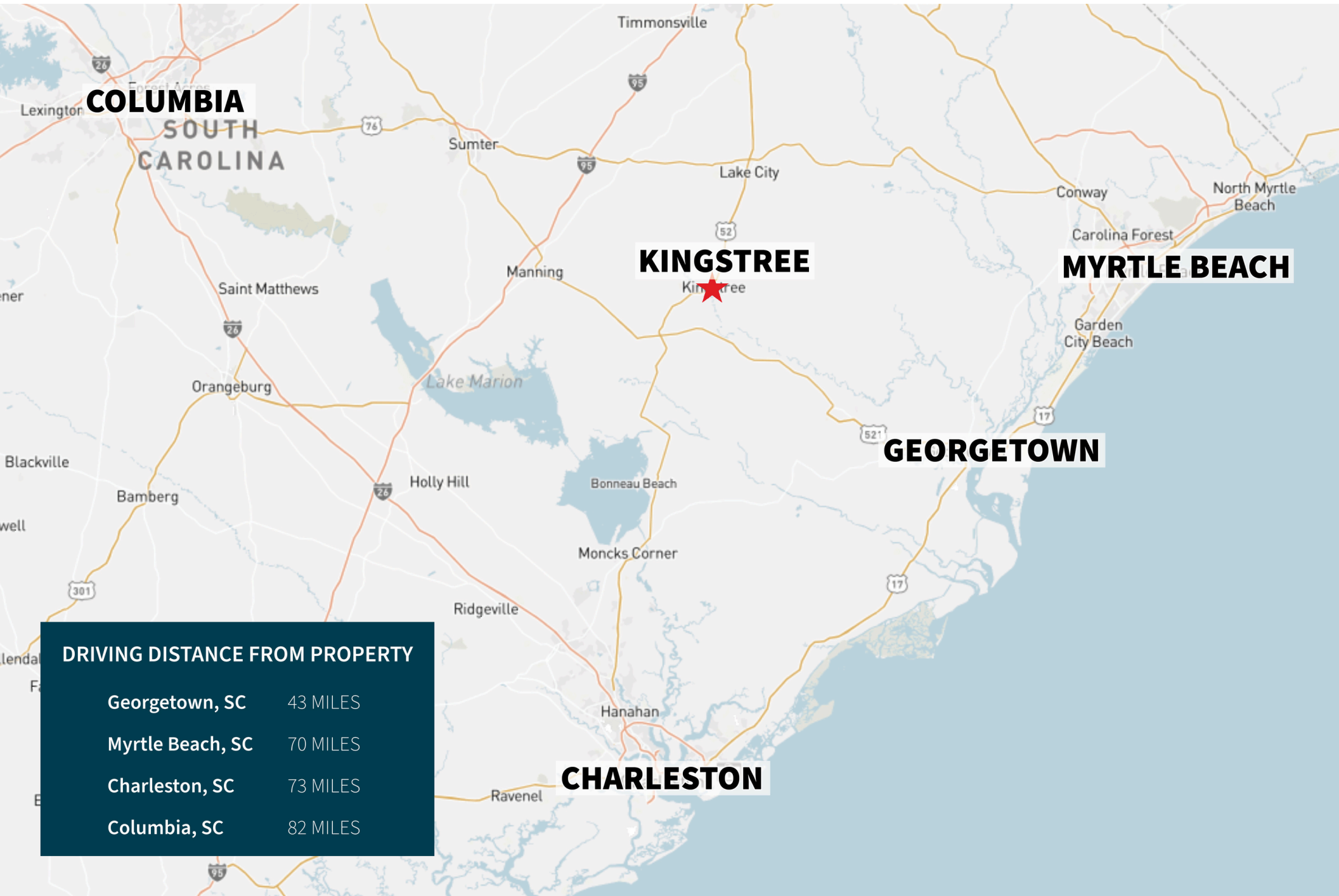
SITE





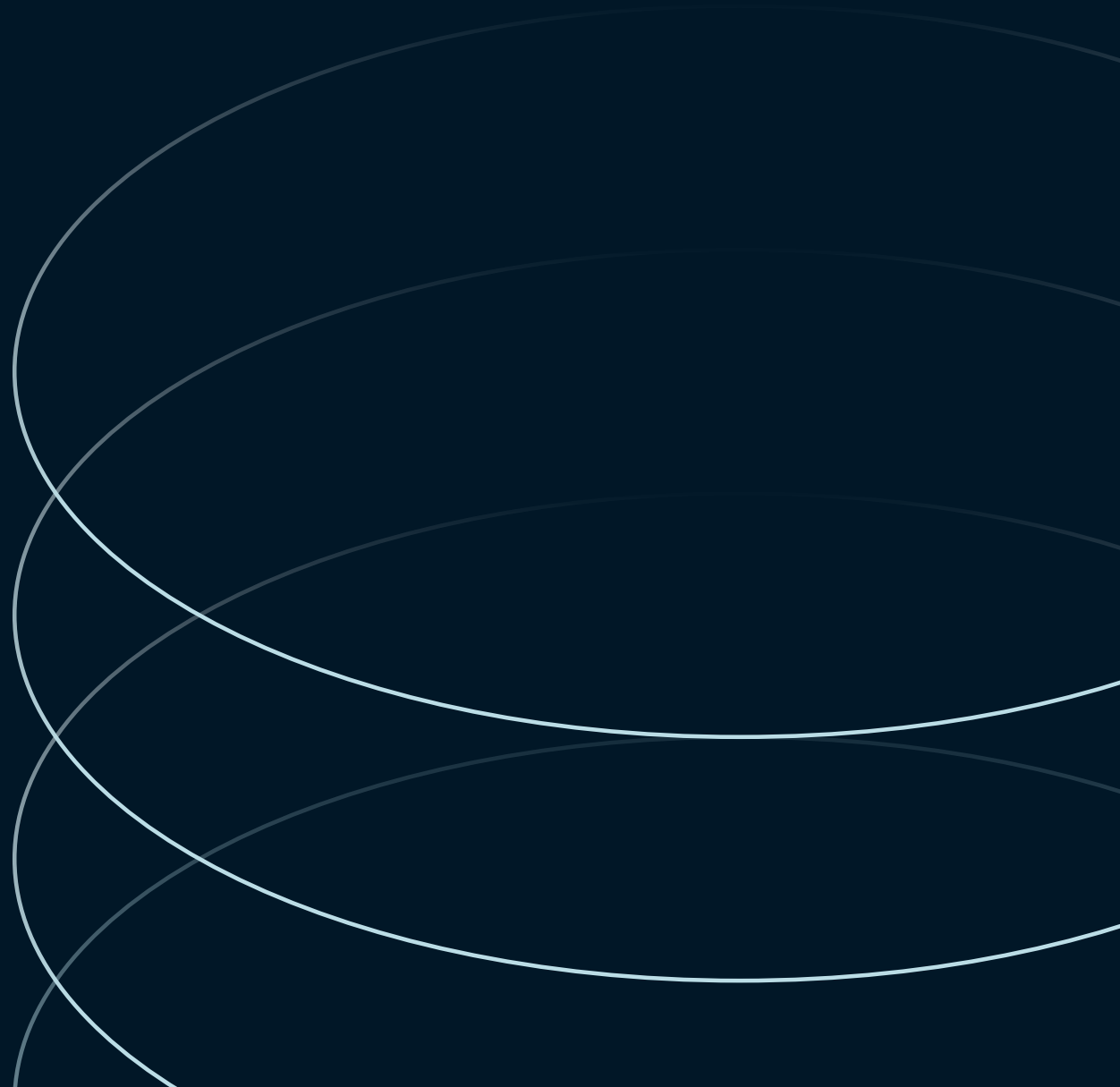
# Regional Overview



## DRIVING DISTANCE FROM PROPERTY

Georgetown, SC	43 MILES
Myrtle Beach, SC	70 MILES
Charleston, SC	73 MILES
Columbia, SC	82 MILES





**Reeves Major**

Reeves.Major@jll.com

+1 864 608 8960

[jll.com](http://jll.com)