

4295-4395 ORCHARD LAKE RD.
WEST BLOOMFIELD, MICHIGAN

RETAIL/MEDICAL FOR LEASE
1,890 Square Feet Available



**SIGNATURE
ASSOCIATES**
KNOW SIGNATURE | KNOW RESULTS

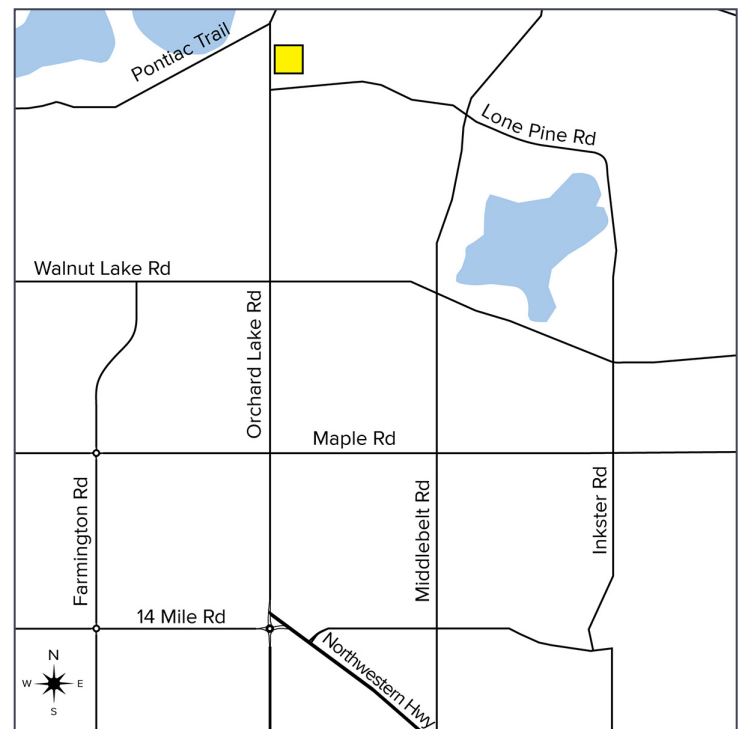
CROSSWINDS MALL



REASONABLE AND AFFORDABLE LEASE RATES

PROPERTY FEATURES

- 1,890 square feet available – Unit #250
- Excellent main road frontage
- Tremendous main road visibility with ample parking
- Diverse tenant mix – great opportunity to start or expand your own business
- Excellent opportunity for retail or medical in a high-profile neighborhood center
- Join Kroger, CVS, Secretary of State, Cosmo Salon, and more
- Lease Rate: \$25.00/sq. ft. NNN



For more information, please contact:

MARVIN PETROUS
(248) 359 0647
mpetrous@signatureassociates.com

SIGNATURE ASSOCIATES
One Towne Square, Suite 1200
Southfield, MI 48076
www.signatureassociates.com

4295-4395 Orchard Lake Rd. – West Bloomfield, MI
Retail/Office For Lease

1,890
Square Feet
AVAILABLE

Unit 250



For more information, please contact:

MARVIN PETROUS
(248) 359 0647
mpetrous@signatureassociates.com

SIGNATURE ASSOCIATES
One Towne Square, Suite 1200
Southfield, MI 48076
www.signatureassociates.com

Information is subject to verification and no liability for errors or omissions is assumed. Price is subject to change and listing withdrawal.

4295-4395 Orchard Lake Rd. – West Bloomfield, MI

Retail/Office For Lease

1,890
Square Feet
AVAILABLE



For more information, please contact:

MARVIN PETROUS
(248) 359 0647
mpetrous@signatureassociates.com

SIGNATURE ASSOCIATES
One Towne Square, Suite 1200
Southfield, MI 48076
www.signatureassociates.com

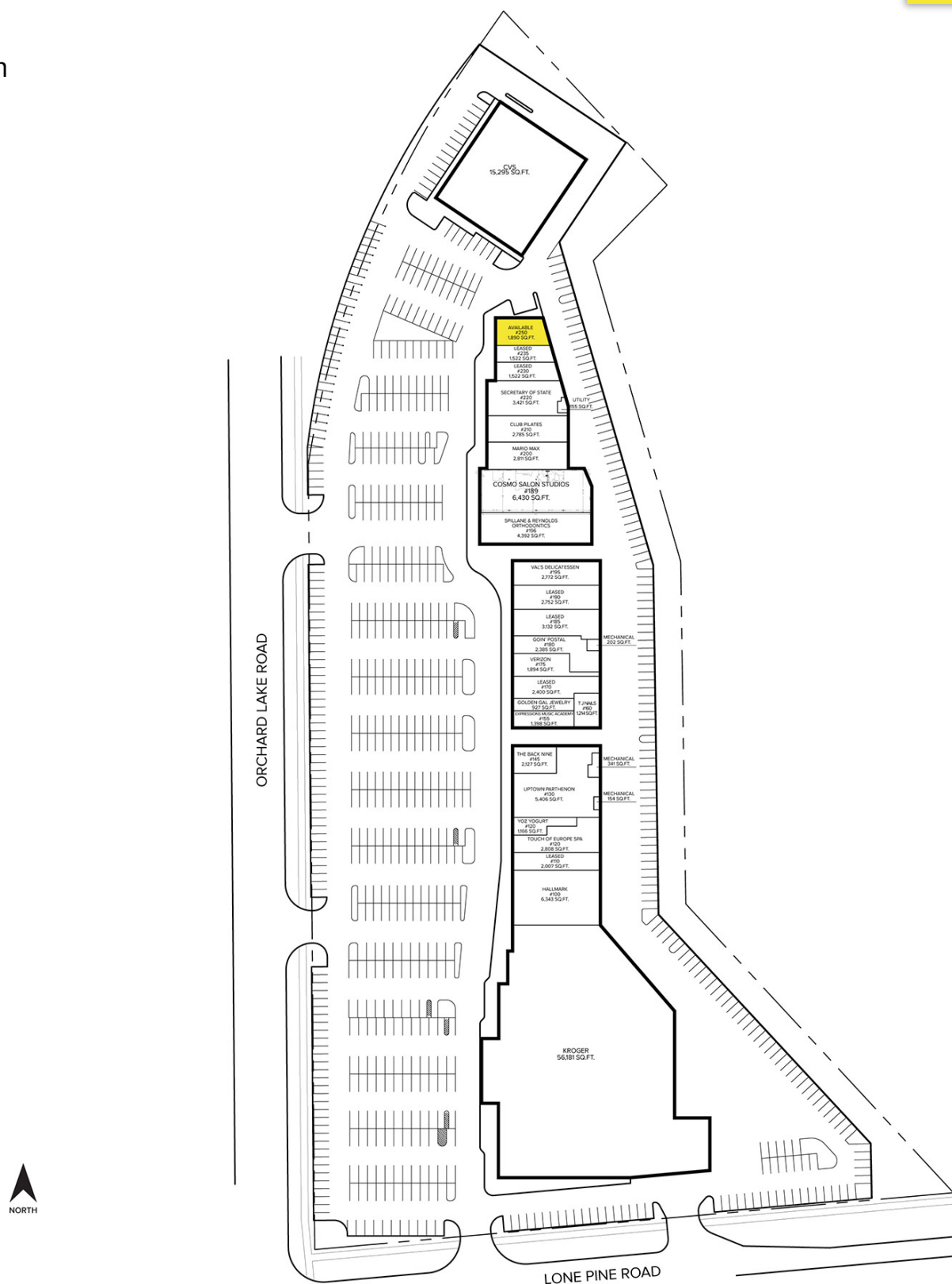
Information is subject to verification and no liability for errors or omissions is assumed. Price is subject to change and listing withdrawal.

4295-4395 Orchard Lake Rd. – West Bloomfield, MI

Retail/Office For Lease

1,890
Square Feet
AVAILABLE

Site Plan



For more information, please contact:

MARVIN PETROUS

(248) 359 0647

mpetrous@signatureassociates.com

SIGNATURE ASSOCIATES
One Towne Square, Suite 1200
Southfield, MI 48076
www.signatureassociates.com

4295-4395 Orchard Lake Rd. – West Bloomfield, MI

Retail/Office For Lease

1,890
Square Feet
AVAILABLE



DEMOGRAPHICS

	POPULATION	MED. HH INCOME
1 MILE	5,708	\$178,113
3 MILE	52,307	\$145,341
5 MILE	158,402	\$122,050

TRAFFIC COUNTS (TWO-WAY)

25,173	Orchard Lake Rd. N of Lone Pine Rd.
26,130	Orchard Lake Rd. S of Lone Pine Rd.
8,646	Lone Pine Rd. E of Orchard Lake Rd.
24,125	Pontiac Trail & Orchard Lake Rd.



For more information, please contact:

MARVIN PETROUS

(248) 359 0647

mpetrous@signatureassociates.com

SIGNATURE ASSOCIATES

One Towne Square, Suite 1200

Southfield, MI 48076

www.signatureassociates.com