



Corporate Campus in Westshore's Eisenhower Corridor

- Sunforest Corporate Campus includes on-site day care, deli and 360 apartment units
- Suites from 3,866 RSF available - several move-in ready options
- 5.00/1,000 parking
- Building and monument signage opportunities
- Convenient access and visibility from both Veterans Expressway and Hillsborough Avenue
- Ease of commute from growing residential neighborhoods in Pasco County
- Minutes from Tampa International Airport
- Long-term, stable Ownership



Get more information

Clay Witherspoon

Managing Director | Principal

+1 813 444 0626

clay.witherspoon@avisonyoung.com

Laurie Hynes

Sr. Client Services Coordinator

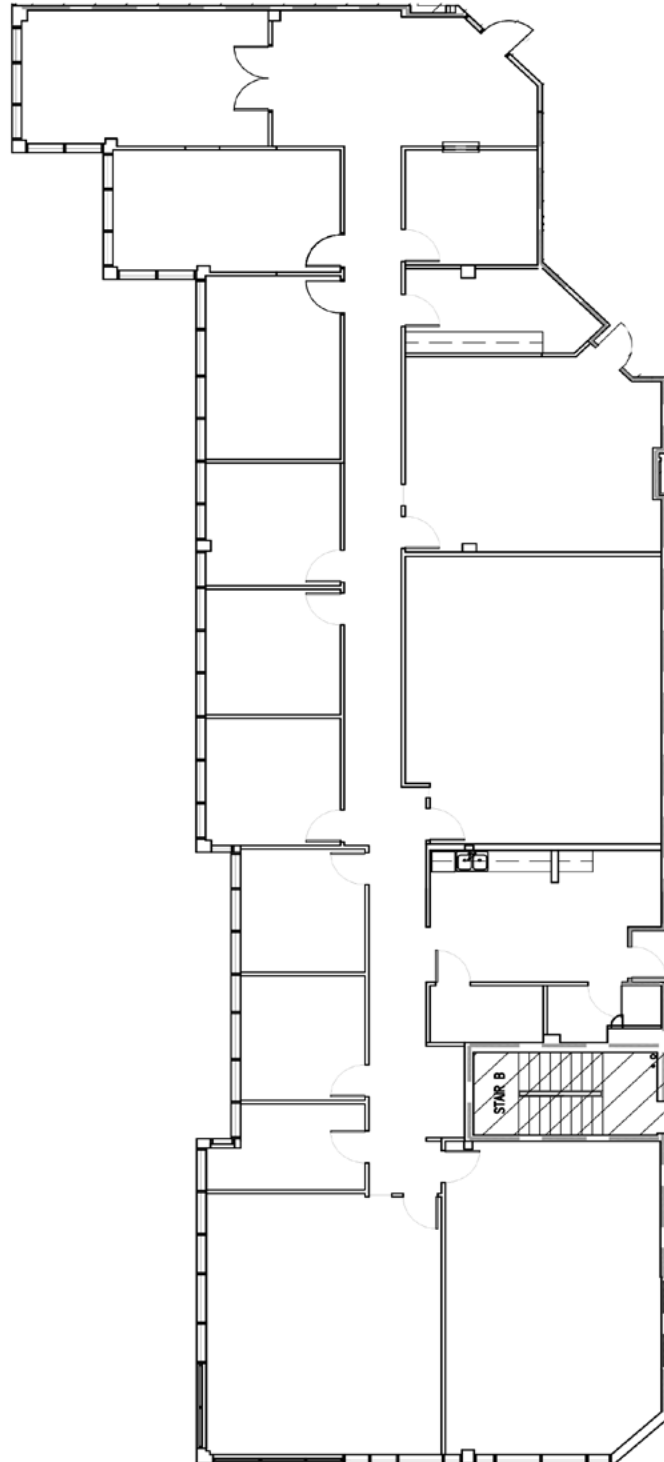
+1 813 444 0621

laurie.hynes@avisonyoung.com

avisonyoung.com

Suite 102
6,162 sf

Sunforest II
5110 Sunforest Drive
Tampa, FL 33634



**Get more
information**

Clay Witherspoon
Managing Director | Principal
+1 813 444 0626

Laurie Hynes
Sr. Client Services Coordinator
+1 813 444 0621

**AVISON
YOUNG**

Suite 105

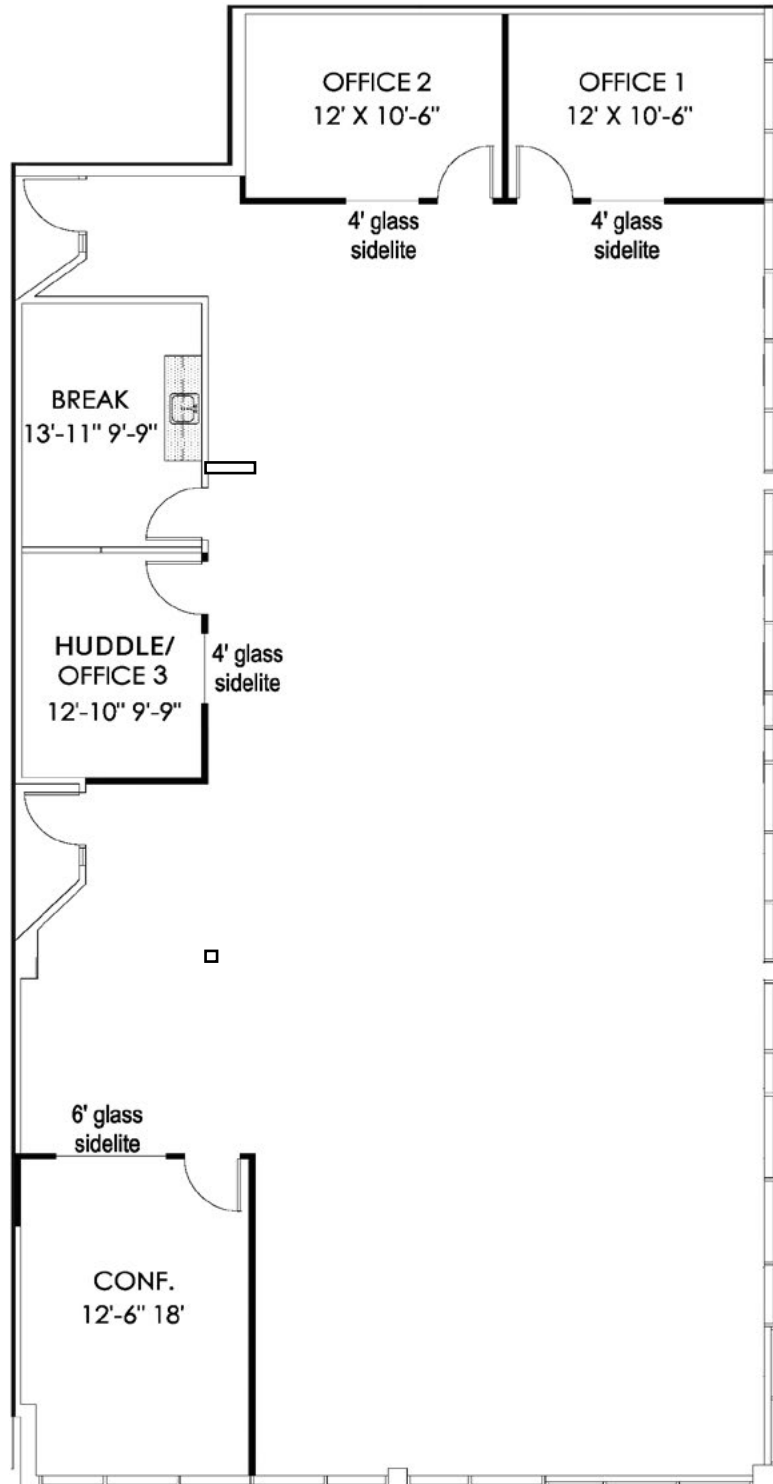
3,866 sf

Sunforest II
5110 Sunforest Drive
Tampa, FL 33634

Move-in Ready

Newly renovated
spec suite:

- New ceiling
- LED lights
- New flooring
- Freshly painted



**Get more
information**

Clay Witherspoon
Managing Director | Principal
+1 813 444 0626

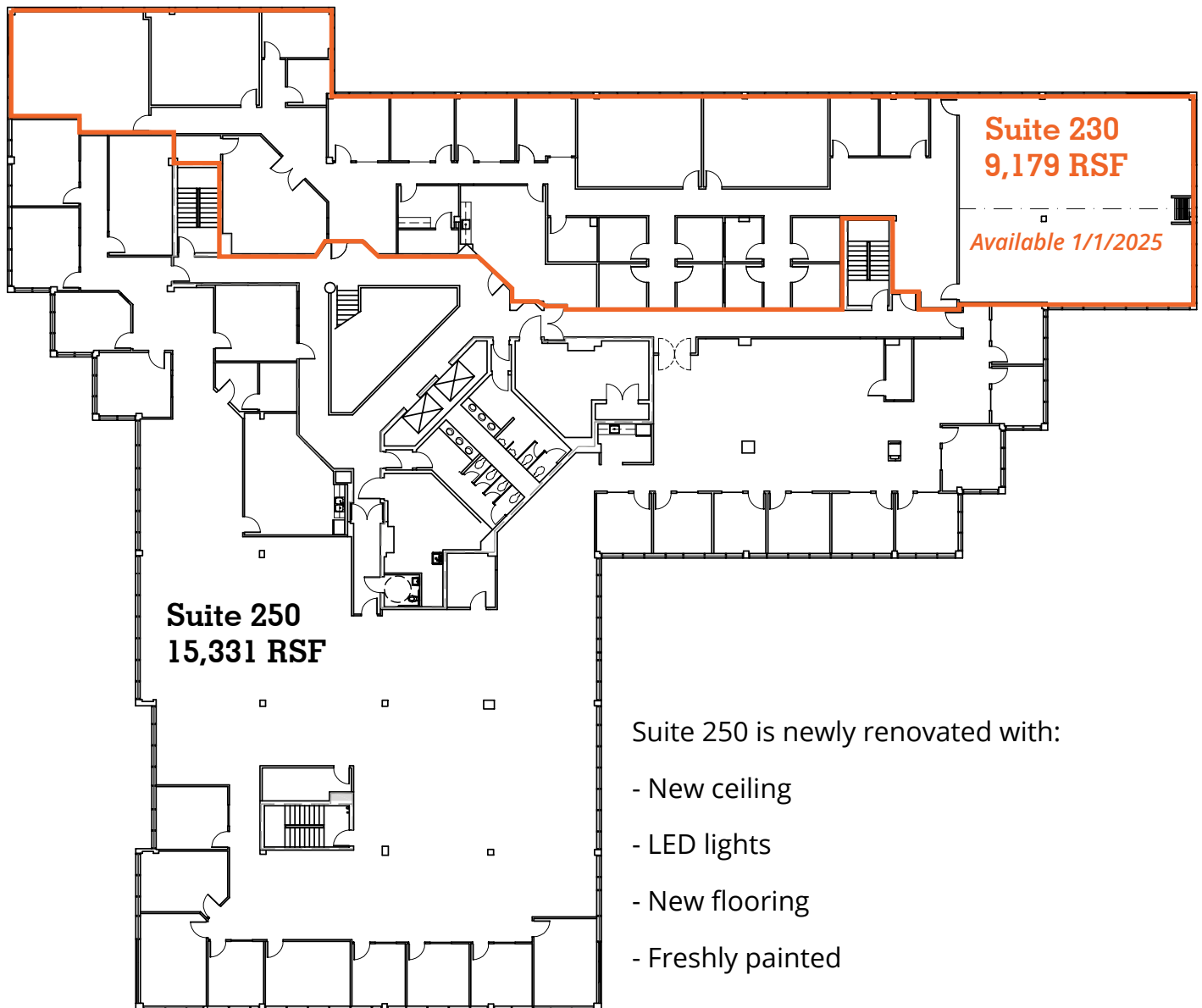
Laurie Hynes
Sr. Client Services Coordinator
+1 813 444 0621

**AVISON
YOUNG**

2nd Floor Full Floor - 24,510 sf

will demise

Sunforest II
5110 Sunforest Drive
Tampa, FL 33634



Suite 250 is newly renovated with:

- New ceiling
- LED lights
- New flooring
- Freshly painted

**Get more
information**

Clay Witherspoon
Managing Director | Principal
+1 813 444 0626

Laurie Hynes
Sr. Client Services Coordinator
+1 813 444 0621

**AVISON
YOUNG**

Location Map

Sunforest II
5110 Sunforest Drive
Tampa, FL 33634



**Get more
information**

Clay Witherspoon
Managing Director | Principal
+1 813 444 0626

Laurie Hynes
Sr. Client Services Coordinator
+1 813 444 0621

**AVISON
YOUNG**