



For lease

32,693 SF

329 Speedwell Avenue
Morris Plains, NJ

jll.com

Property overview

- Located off of Route 202 and East Hanover Avenue
- In close proximity to downtown Morristown

-
- 32,693 SF available for lease
 - 3.39 acres
 - Former Acme space
 - 191 car parking spaces
 - Located in a B-2 zone
 - 3 exterior loading docks
 - Asking rent: \$25.00 PSF
 - Taxes: \$156,177.00 (2023)



Click or scan QR code to view interior of the space



Demographics

Population

1-miles	3-miles	5-miles
9,119	67,976	131,402

Med. HH Income

1-miles	3-miles	5-miles
\$128,269	\$126,655	\$133,417

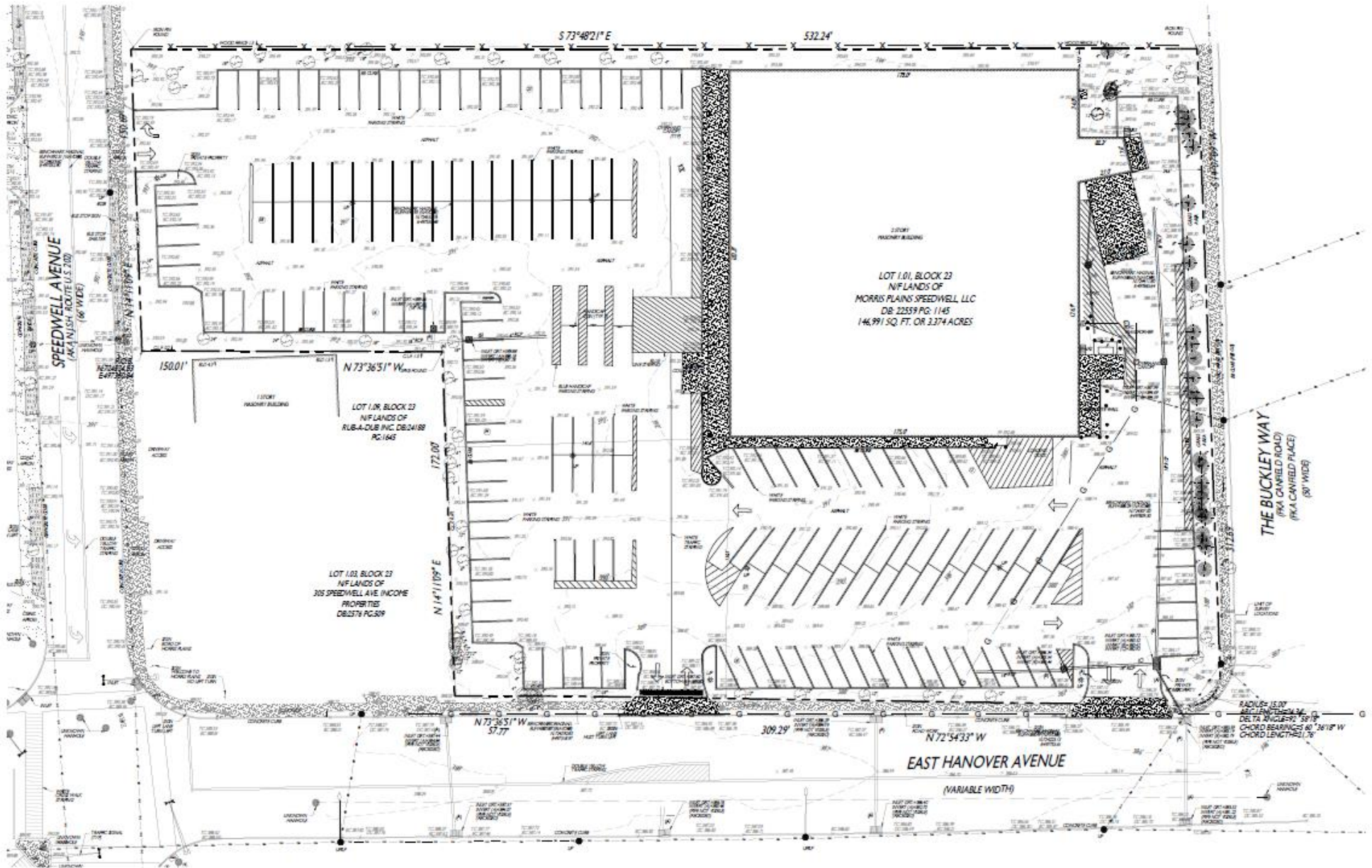
Employees

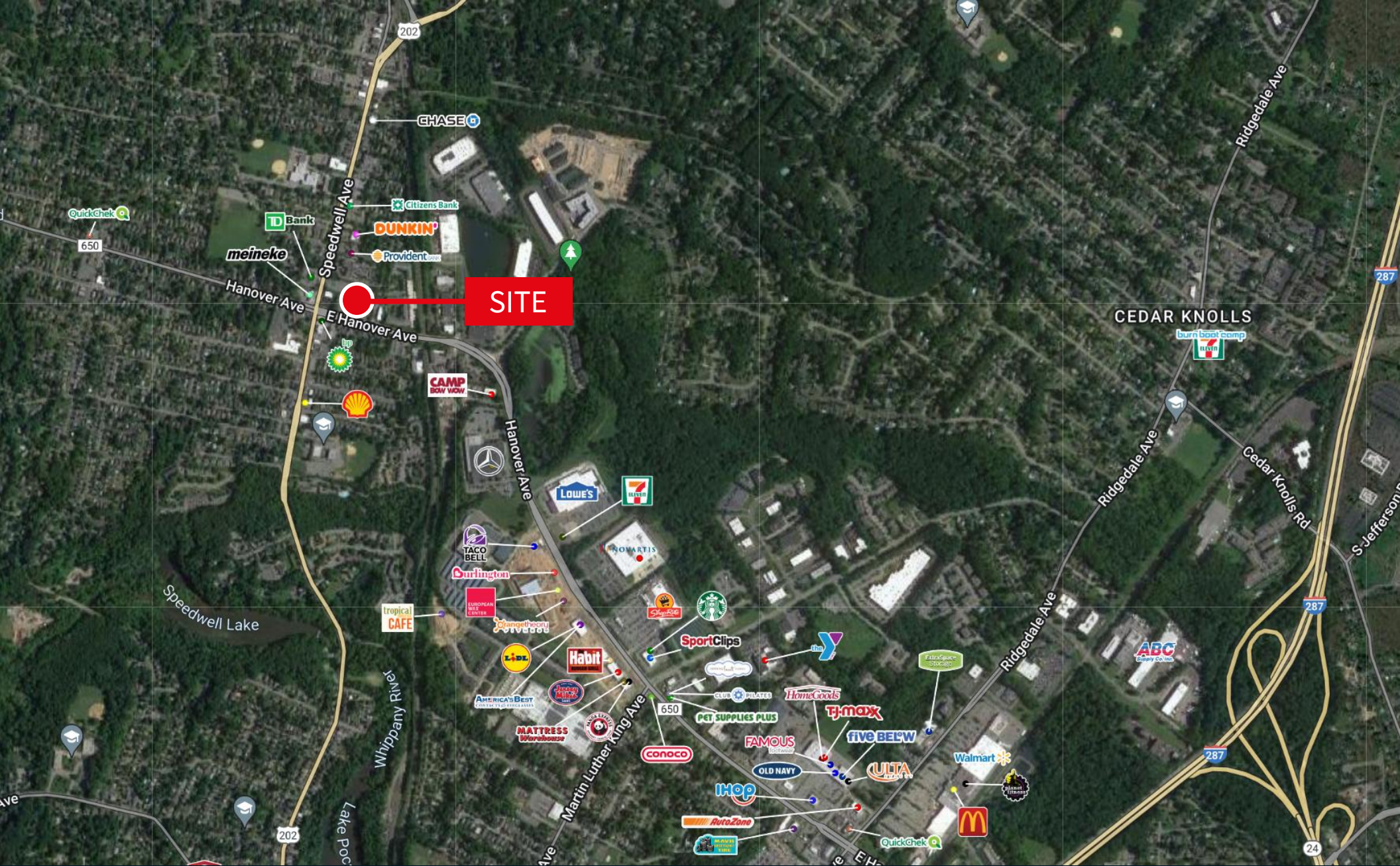
1-miles	3-miles	5-miles
3,669	67,790	143,329

Businesses

1-miles	3-miles	5-miles
486	5,832	10,698

Site plan





Craig Parcels
Vice President
craig.parcels@jll.com
M: +1 201 618 7223

