

2387

Clements
Ferry Road

± 33,492 SF SUBLEASE
SUBDIVIDABLE TO ± 6,470 SF

[Click Here to
Tour the Space!](#)

CHARLESTON, SC



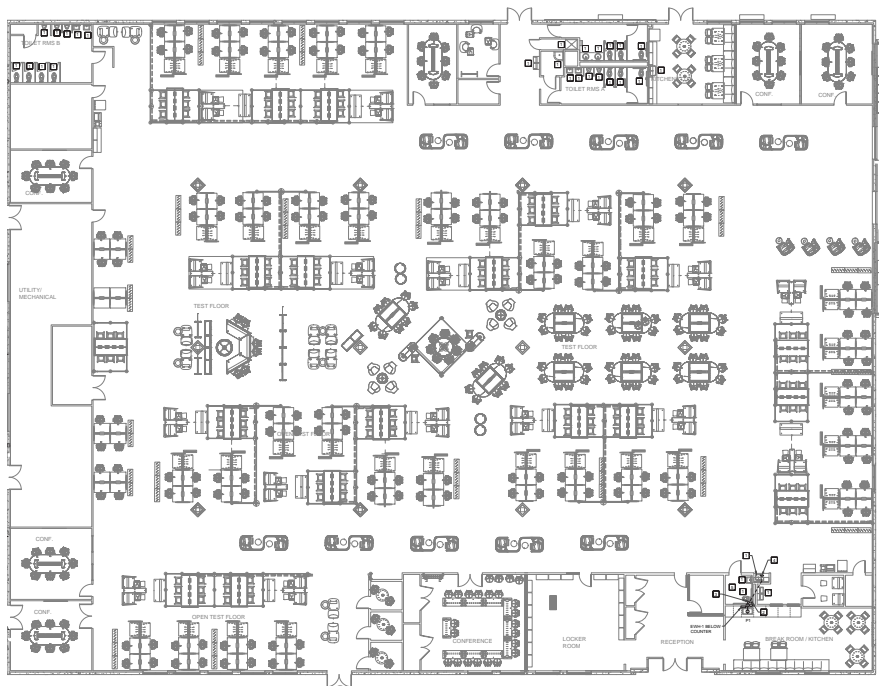
CBRE



HIGHLIGHTS

Amazing sublease opportunity in a high tech office space with lots of natural light and plenty of parking. Located in the rapidly expanding Clements Ferry Corridor on Daniel Island.

- May be leased fully furnished
- Provides a close circuit surveillance and badge entry system
- Building is ISO/IEC 27001 certified
- Subdivisible ±6,470 SF - ±33,492 SF
- Available for sublease though December 31, 2029 with option to terminate on November 30, 2027
- Rate: \$26.95/sf including CAMTI. Tenant pays utilities and janitorial



ABUNDANT
PARKING

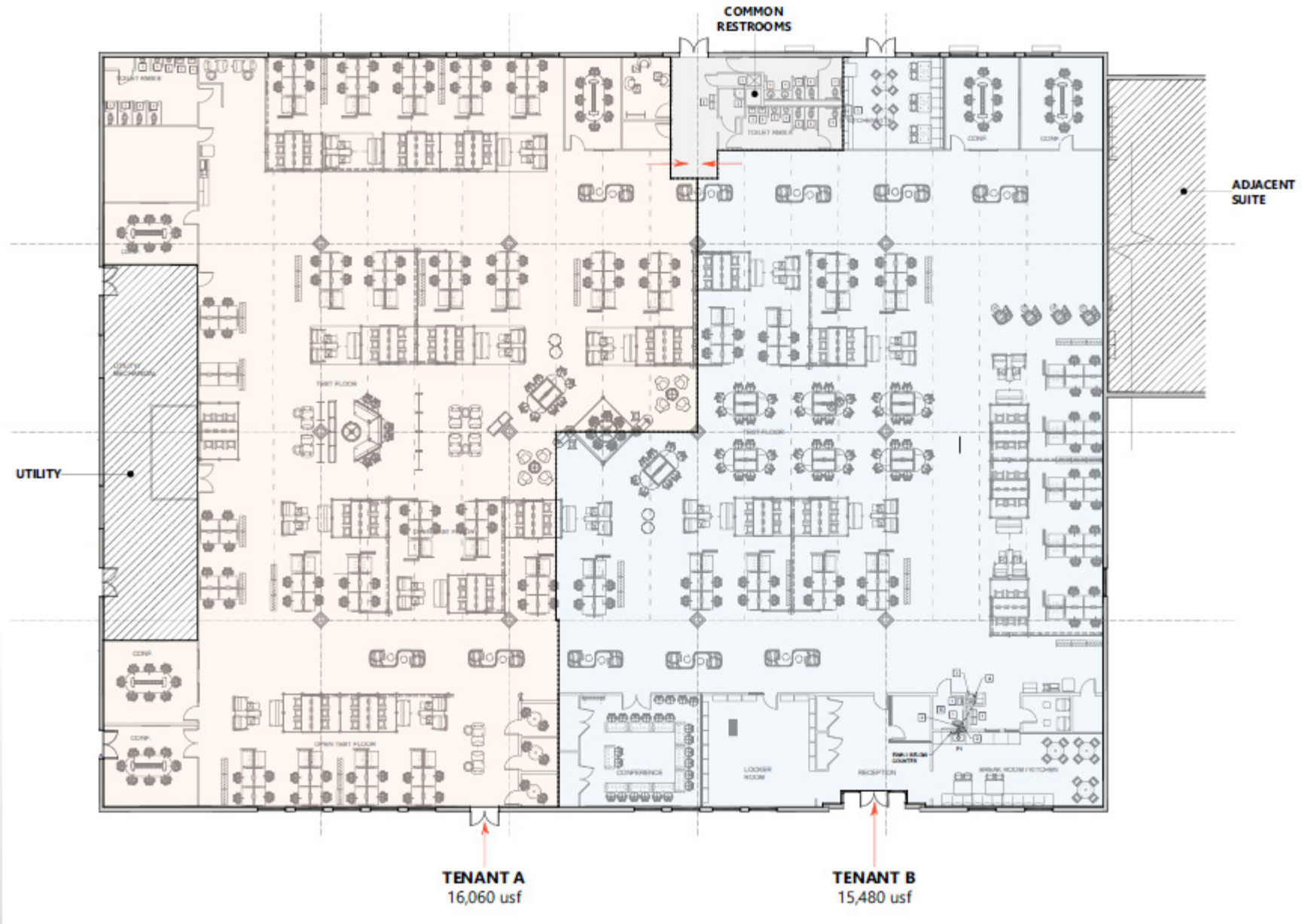


NEARBY DINING/
SHOPPING

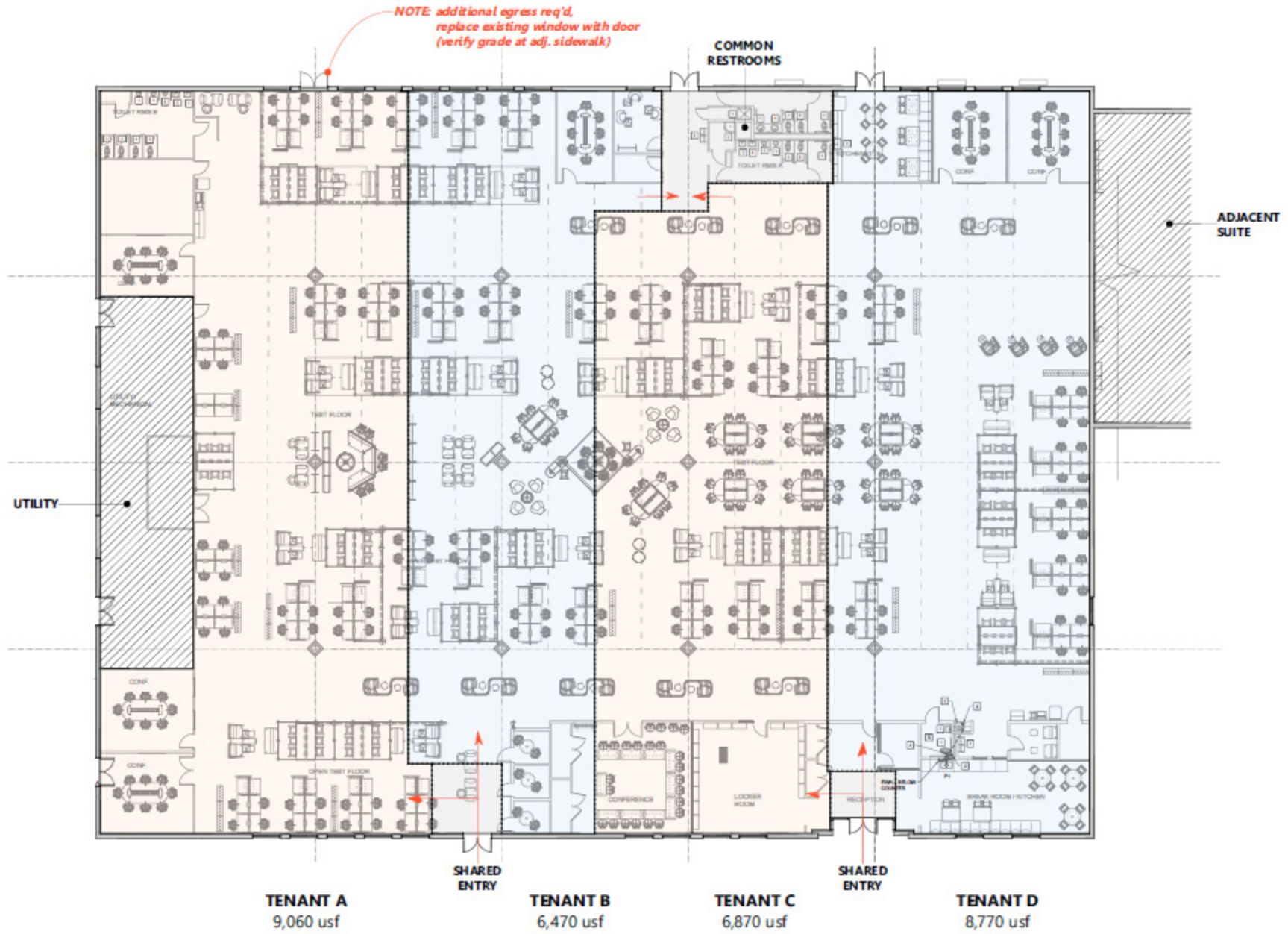


EASY ACCESS TO
I-526

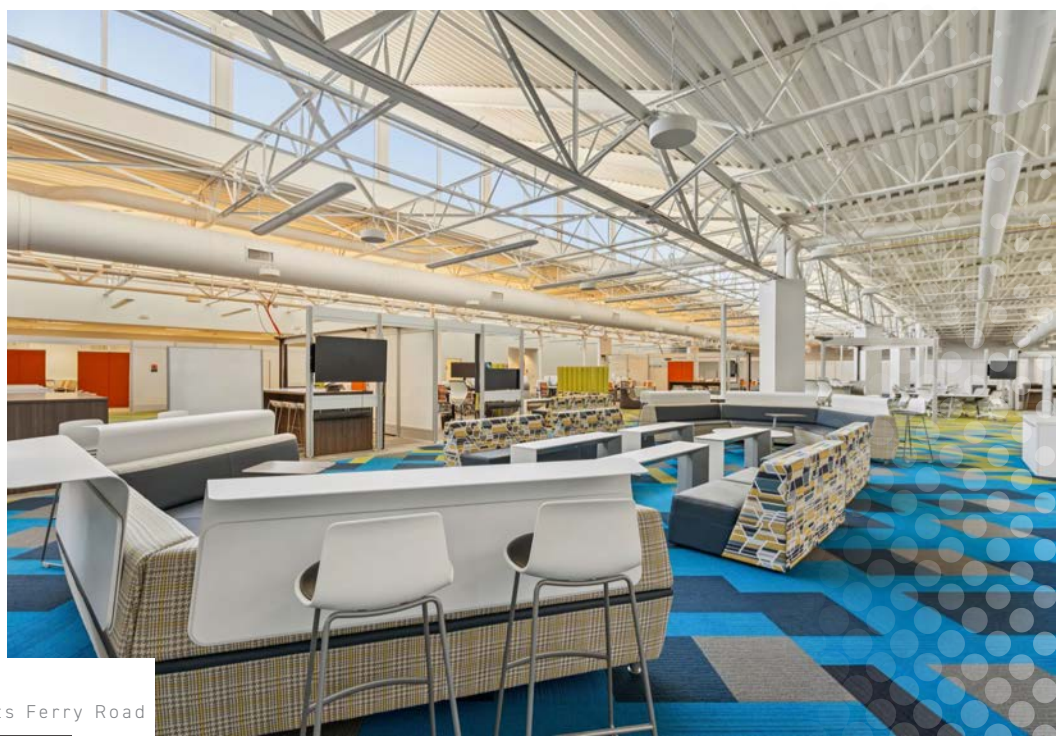
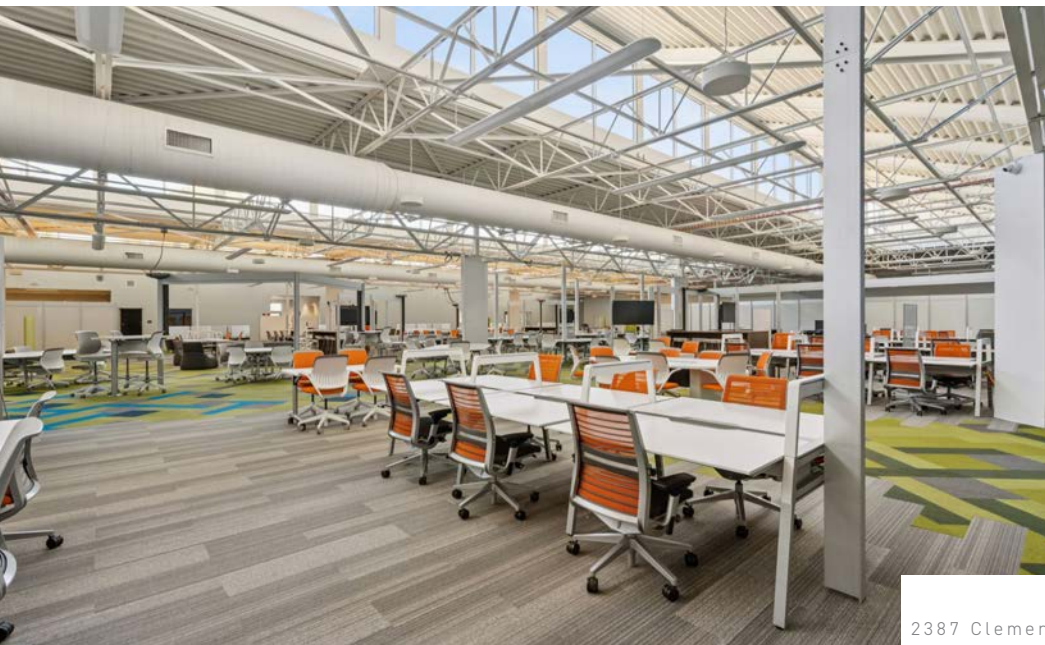
OPTIONAL SUBDIVIDED FLOORPLAN A



OPTIONAL SUBDIVIDED FLOORPLAN B



2387 Clements Ferry Road

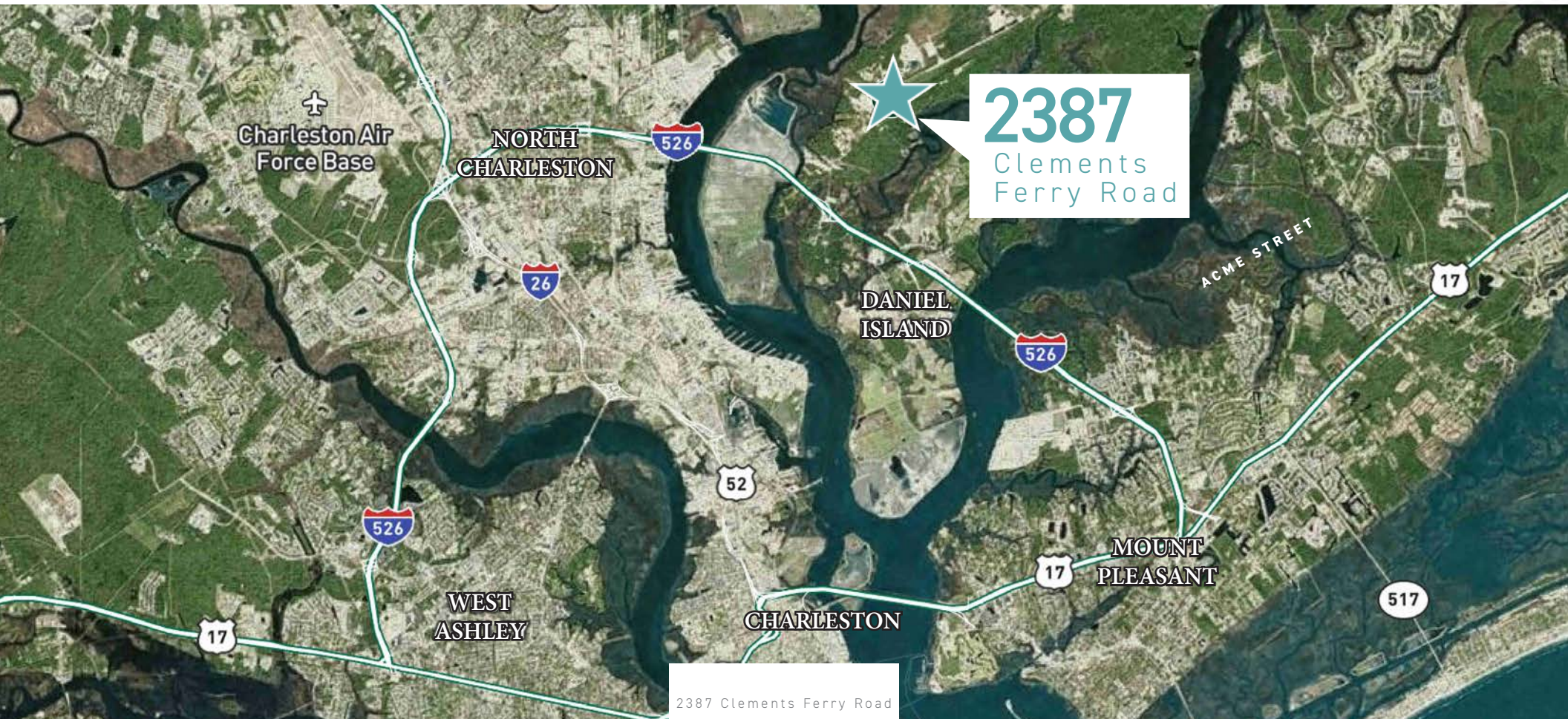


2387 Clements Ferry Road



LOCATION

2387 Clements Ferry Road is located on Daniel Island, a master-planned 4,000 acre community in Berkeley County situated between the Cooper and Wando Rivers just across from downtown Charleston. It is connected by land and easily accessible to I-26, North Charleston and Mount Pleasant. Daniel Island promotes a vibrant, walkable community with local events and year-round recreation.



2387

Clements Ferry Road

Charleston, SC

CONTACT US

Charles Carmody

Senior Vice President

+1 843 577 1155

charles.carmody@cbre.com

Ryan Carmody

Vice President

+1 843 577 1162

ryan.carmody@cbre.com

© 2026 CBRE, Inc. All rights reserved. This information has been obtained from sources believed reliable, but has not been verified for accuracy or completeness. You should conduct a careful, independent investigation of the property and verify all information. Any reliance on this information is solely at your own risk. CBRE and the CBRE logo are service marks of CBRE, Inc. All other marks displayed on this document are the property of their respective owners, and the use of such logos does not imply any affiliation with or endorsement of CBRE. Photos herein are the property of their respective owners. Use of these images without the express written consent of the owner is prohibited.



CBRE