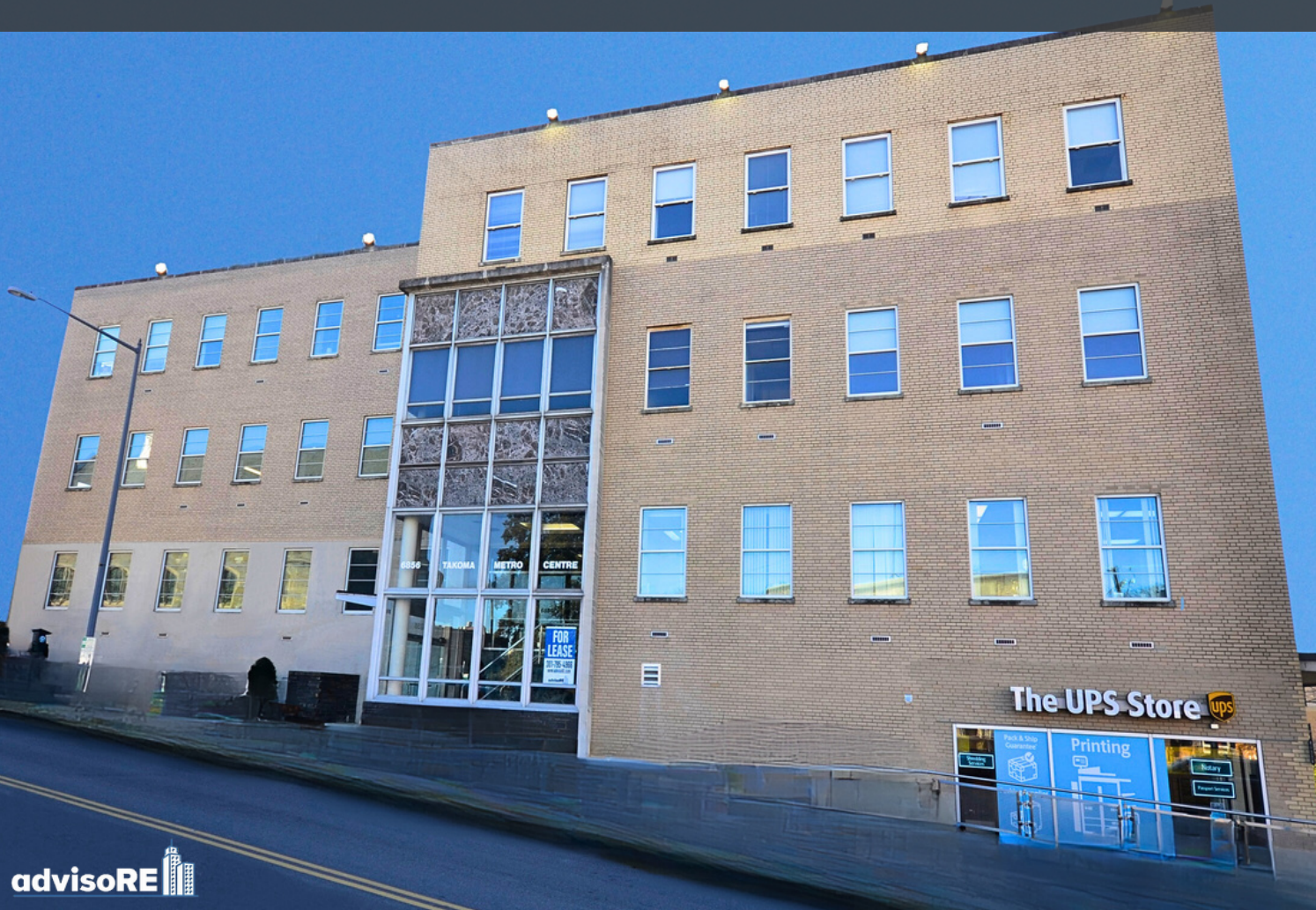


6856 EASTERN AVENUE

TAKOMA METRO CENTER



# FOR LEASE

## 6856 EASTERN AVENUE, NW

### OFFICE SUITES

Historic Takoma Park's premier office property.

Located in Washington, DC on the border of Maryland.

A five minute walk from the Takoma Park Metro, Red Line.

Amenities include the Takoma Park Streeter, restaurants, and retail within one block of the property.

Ample neighborhood parking.

Please see our available suites below and contact us for a virtual or in-person tour.

### HIGHLIGHTS

- Move-In-Ready Office Suites
- Available Immediately
- Prime Lease 3-10 years



# FOR LEASE

**6856 EASTERN AVENUE, NW**

**OFFICE SUITES | TAKOMA PARK DC**

## AVAILABILITIES

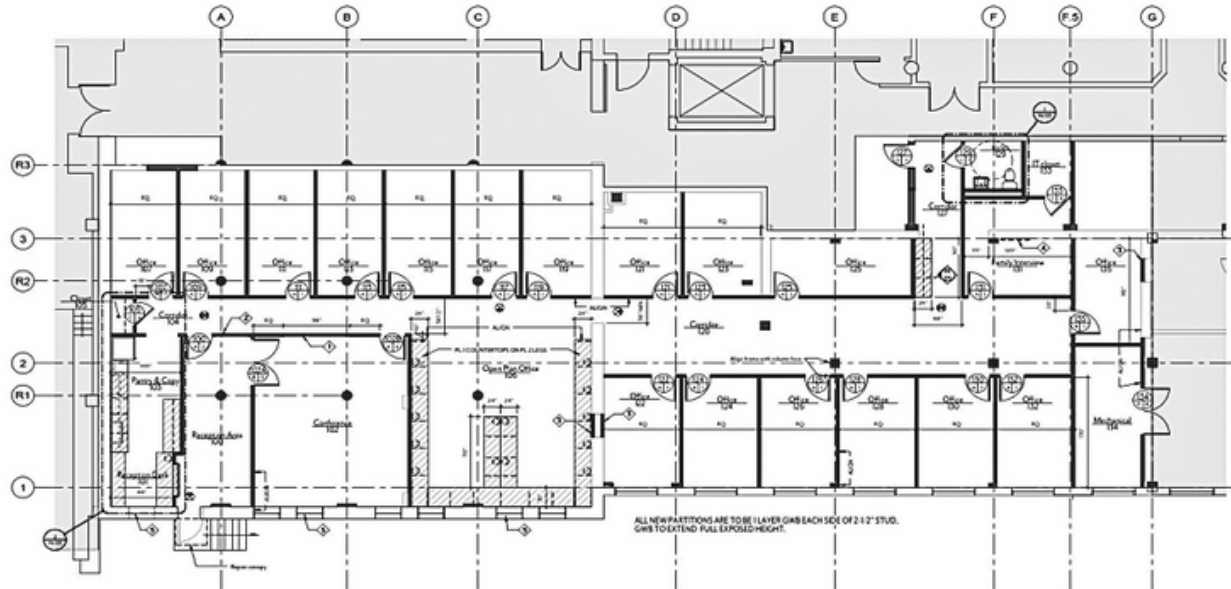
FLOOR	SUITE	SF
1st	1A	5,481
2nd	212	2,178
2nd	221	1,291
2nd	225	4,277
3rd	311	4,185

## FEATURES

- Lobby Directory
- Abundant Neighborhood Parking
- Walk to Takoma Park Metro - Red Line
- Heart of Takoma Park Restaurant Scene



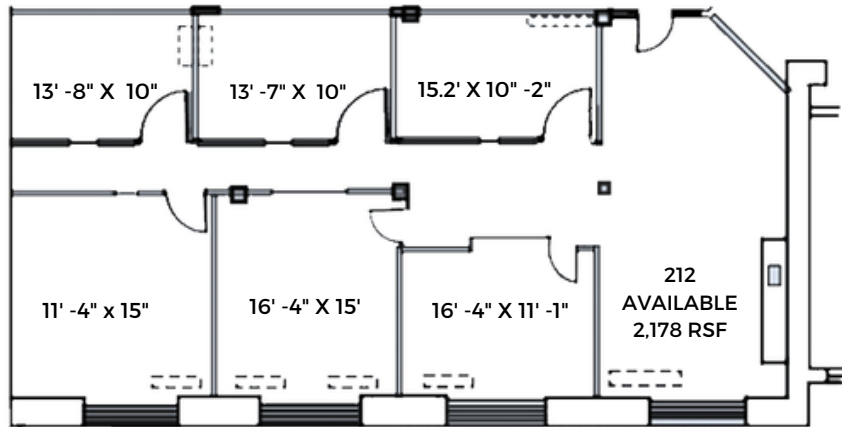
## 5,481 Square Feet



### LAYOUT

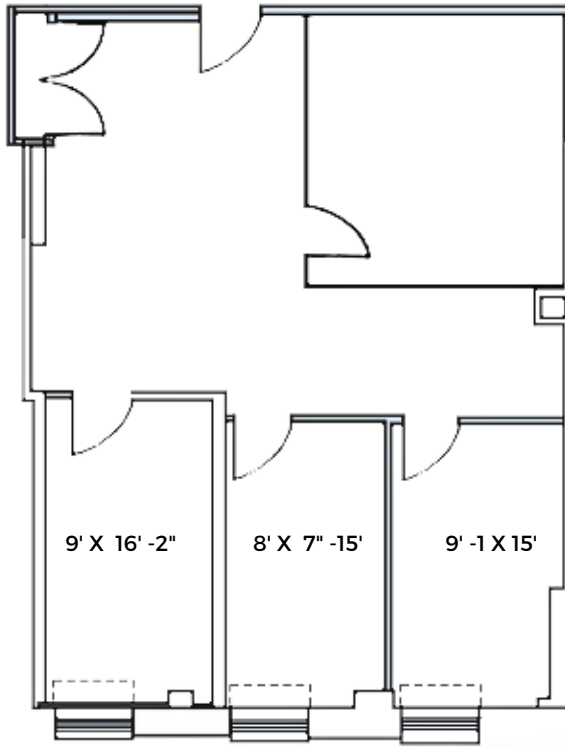
- Available Immediately
- Private Street Level Suite Entry
- Reception
- 11 Internal Offices
- Large Conference Room
- Breakout Room
- Private Restroom
- Kitchenette & Work Room
- 6 Windowed Offices
- Area for 14 Plus Workstations

## 2,178 SQUARE FEET

LAYOUT

- Available Immediately
- 6 Spacious Private Offices
- Full Wall Window Line
- Kitchenette

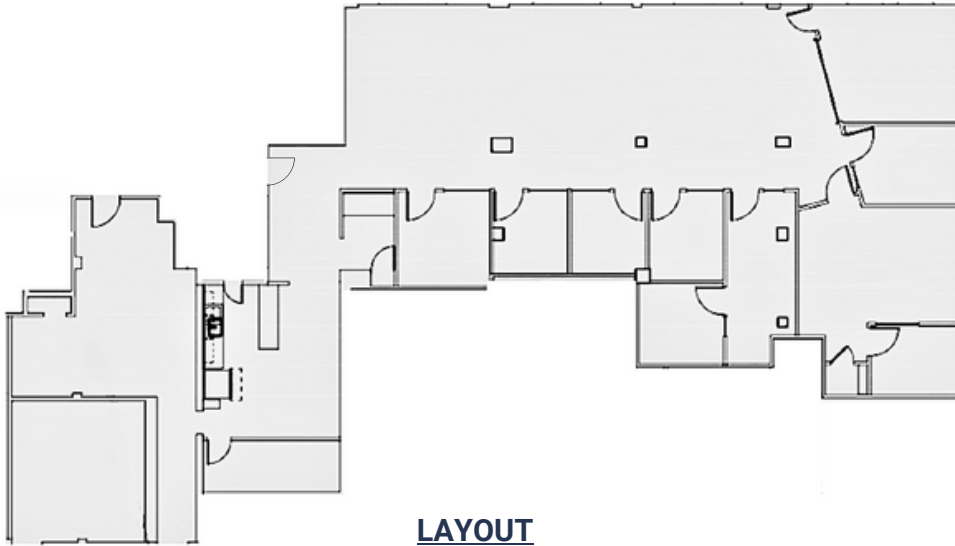
1,291 SQUARE FEET



LAYOUT

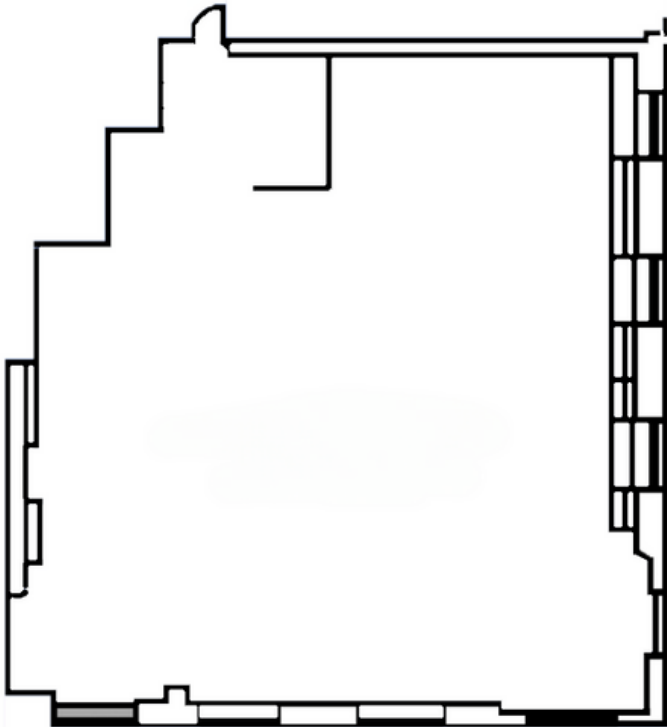
- 3 Windowed Offices
- 1 Meeting Room
- Close Proximity to Elevators and Stairs

4,277 Square Feet



- 4 Windowed Offices
- 6 Interior Offices
- Group Work Area
- Large Kitchen
- Large Conference Room
- Open Space for Cubicles

4,185 Square Feet



LAYOUT

- Open Plan
- Corner Suite
- Great Window Line
- Built to Suit