



University Park Professional Center

938 University Park Blvd, Clearfield, UT 84015



Brett Mills

Utah Professional Offices, LLC

5668 Silver Mountain Cv, Mountain Green, UT 84050

utahprofessionaloffices@gmail.com

(801) 628-6771

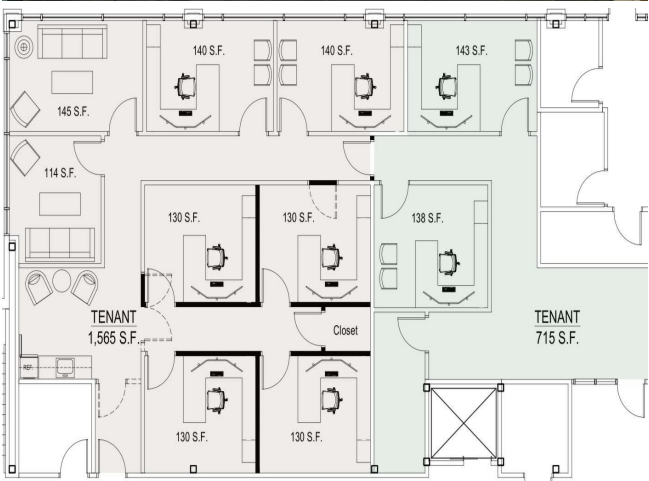


University Park Professional Center

Upon Request

- Fully Remodeled and Move-In Ready: Start working immediately in a modern, updated space.
- Janitorial Services: Keep your workspace clean and professional.
- High-Speed Internet: Stay connected and productive.
- Flexible Lease Terms: Tailor your lease to fit your needs.
- Networking Opportunities: Collaborate and expand your business with other tenants.
- Professional Training Room: Access to a dedicated space for training sessions.
- Electric Vehicle Charging Hookups: Convenient charging for your electric vehicles....

- Fully remodeled
- Flexible Lease Terms
- Janitorial Services and High Speed Internet Included
- Electric Vehicle Charging Hookups



Rental Rate:	Upon Request
Property Type:	Office
Building Class:	A
Rentable Building Area:	20,000 SF
Year Built:	2006
Walk Score ®:	19 (Car-Dependent)
Transit Score ®:	35 (Some Transit)
Rental Rate Mo:	Upon Request

1st Floor Ste 1

Space Available	180 SF
Rental Rate	Upon Request
Date Available	Now
Service Type	Full Service
Built Out As	Standard Office
Space Type	Relet
Space Use	Office
Lease Term	1 Years

Prime Executive Office Spaces Available in Clearfield, Utah!Are you looking for a professional and productive workspace? Look no further! Our executive office spaces are located in a fantastic location just minutes from Interstate 15, 93, and 89, ensuring easy access for your clients. • Location Highlights: • 938 S University Park Blvd, Clearfield, UT 84015 • Next to Weber State Davis Campus • Close to restaurants and Hill Air Force BaseOffice Features: • Fully Remodeled and Move-In Ready: Start working immediately in a modern, updated space. • Janitorial Services: Keep your workspace clean and professional. • High-Speed Internet: Stay connected and productive. • Flexible Lease Terms: Tailor your lease to fit your needs. • Networking Opportunities: Collaborate and expand your business with other tenants. • Professional Training Room: Access to a dedicated space for training sessions. • Electric Vehicle Charging Hookups: Convenient charging for your electric vehicles.Why Choose Our Executive Offices?: • Higher Productivity: A professional environment that boosts your efficiency. • Professional Look: Impress your clients with a polished office space. • Better Quality of Life: Stop long commutes to Salt Lake City and enjoy working closer to home.Special Offers: • Discounts for Leasing Multiple Offices: Save more when you lease multiple spaces. • Affordable Monthly Lease Rates: Ranging from \$675 to \$750 depending on office size.Don't miss this opportunity to elevate your business in a prime location! Contact us today to schedule a tour and secure your executive office space.Act Now! Spaces are filling up quickly. Secure your executive office today and take your business to the next level!

1st Floor Ste 2

Space Available	180 SF
Rental Rate	Upon Request
Date Available	Now
Service Type	Full Service
Built Out As	Standard Office
Space Type	Relet
Space Use	Office
Lease Term	1 Years

Prime Executive Office Spaces Available in Clearfield, Utah!Are you looking for a professional and productive workspace? Look no further! Our executive office spaces are located in a fantastic location just minutes from Interstate 15, 93, and 89, ensuring easy access for your clients. • Location Highlights: • 938 S University Park Blvd, Clearfield, UT 84015 • Next to Weber State Davis Campus • Close to restaurants and Hill Air Force BaseOffice Features: • Fully Remodeled and Move-In Ready: Start working immediately in a modern, updated space. • Janitorial Services: Keep your workspace clean and professional. • High-Speed Internet: Stay connected and productive. • Flexible Lease Terms: Tailor your lease to fit your needs. • Networking Opportunities: Collaborate and expand your business with other tenants. • Professional Training Room: Access to a dedicated space for training sessions. • Electric Vehicle Charging Hookups: Convenient charging for your electric vehicles.Why Choose Our Executive Offices?: • Higher Productivity: A professional environment that boosts your efficiency. • Professional Look: Impress your clients with a polished office space. • Better Quality of Life: Stop long commutes to Salt Lake City and enjoy working closer to home.Special Offers: • Discounts for Leasing Multiple Offices: Save more when you lease multiple spaces. • Affordable Monthly Lease Rates: Ranging from \$675 to \$750 depending on office size.Don't miss this opportunity to elevate your business in a prime location! Contact us today to schedule a tour and secure your executive office space.Act Now! Spaces are filling up quickly. Secure your executive office today and take your business to the next level!

1st Floor Ste 3

Space Available	180 SF
Rental Rate	Upon Request
Date Available	Now
Service Type	Full Service
Built Out As	Standard Office
Space Type	Relet
Space Use	Office
Lease Term	1 Years

Prime Executive Office Spaces Available in Clearfield, Utah!Are you looking for a professional and productive workspace? Look no further! Our executive office spaces are located in a fantastic location just minutes from Interstate 15, 93, and 89, ensuring easy access for your clients. • Location Highlights: • 938 S University Park Blvd, Clearfield, UT 84015 • Next to Weber State Davis Campus • Close to restaurants and Hill Air Force BaseOffice Features: • Fully Remodeled and Move-In Ready: Start working immediately in a modern, updated space. • Janitorial Services: Keep your workspace clean and professional. • High-Speed Internet: Stay connected and productive. • Flexible Lease Terms: Tailor your lease to fit your needs. • Networking Opportunities: Collaborate and expand your business with other tenants. • Professional Training Room: Access to a dedicated space for training sessions. • Electric Vehicle Charging Hookups: Convenient charging for your electric vehicles.Why Choose Our Executive Offices?: • Higher Productivity: A professional environment that boosts your efficiency. • Professional Look: Impress your clients with a polished office space. • Better Quality of Life: Stop long commutes to Salt Lake City and enjoy working closer to home.Special Offers: • Discounts for Leasing Multiple Offices: Save more when you lease multiple spaces. • Affordable Monthly Lease Rates: Ranging from \$675 to \$750 depending on office size.Don't miss this opportunity to elevate your business in a prime location! Contact us today to schedule a tour and secure your executive office space.Act Now! Spaces are filling up quickly. Secure your executive office today and take your business to the next level!

1st Floor Ste 4

Space Available	180 SF
Rental Rate	Upon Request
Date Available	Now
Service Type	Full Service
Built Out As	Standard Office
Space Type	Relet
Space Use	Office
Lease Term	1 Years

Prime Executive Office Spaces Available in Clearfield, Utah!Are you looking for a professional and productive workspace? Look no further! Our executive office spaces are located in a fantastic location just minutes from Interstate 15, 93, and 89, ensuring easy access for your clients. • Location Highlights: • 938 S University Park Blvd, Clearfield, UT 84015 • Next to Weber State Davis Campus • Close to restaurants and Hill Air Force BaseOffice Features: • Fully Remodeled and Move-In Ready: Start working immediately in a modern, updated space. • Janitorial Services: Keep your workspace clean and professional. • High-Speed Internet: Stay connected and productive. • Flexible Lease Terms: Tailor your lease to fit your needs. • Networking Opportunities: Collaborate and expand your business with other tenants. • Professional Training Room: Access to a dedicated space for training sessions. • Electric Vehicle Charging Hookups: Convenient charging for your electric vehicles.Why Choose Our Executive Offices?: • Higher Productivity: A professional environment that boosts your efficiency. • Professional Look: Impress your clients with a polished office space. • Better Quality of Life: Stop long commutes to Salt Lake City and enjoy working closer to home.Special Offers: • Discounts for Leasing Multiple Offices: Save more when you lease multiple spaces. • Affordable Monthly Lease Rates: Ranging from \$675 to \$750 depending on office size.Don't miss this opportunity to elevate your business in a prime location! Contact us today to schedule a tour and secure your executive office space.Act Now! Spaces are filling up quickly. Secure your executive office today and take your business to the next level!

1st Floor Ste 5

Space Available	180 SF
Rental Rate	Upon Request
Date Available	Now
Service Type	Full Service
Built Out As	Standard Office
Space Type	Relet
Space Use	Office
Lease Term	1 Years

Prime Executive Office Spaces Available in Clearfield, Utah!Are you looking for a professional and productive workspace? Look no further! Our executive office spaces are located in a fantastic location just minutes from Interstate 15, 93, and 89, ensuring easy access for your clients. • Location Highlights: • 938 S University Park Blvd, Clearfield, UT 84015 • Next to Weber State Davis Campus • Close to restaurants and Hill Air Force BaseOffice Features: • Fully Remodeled and Move-In Ready: Start working immediately in a modern, updated space. • Janitorial Services: Keep your workspace clean and professional. • High-Speed Internet: Stay connected and productive. • Flexible Lease Terms: Tailor your lease to fit your needs. • Networking Opportunities: Collaborate and expand your business with other tenants. • Professional Training Room: Access to a dedicated space for training sessions. • Electric Vehicle Charging Hookups: Convenient charging for your electric vehicles.Why Choose Our Executive Offices?: • Higher Productivity: A professional environment that boosts your efficiency. • Professional Look: Impress your clients with a polished office space. • Better Quality of Life: Stop long commutes to Salt Lake City and enjoy working closer to home.Special Offers: • Discounts for Leasing Multiple Offices: Save more when you lease multiple spaces. • Affordable Monthly Lease Rates: Ranging from \$675 to \$750 depending on office size.Don't miss this opportunity to elevate your business in a prime location! Contact us today to schedule a tour and secure your executive office space.Act Now! Spaces are filling up quickly. Secure your executive office today and take your business to the next level!

1st Floor Ste 6

Space Available	180 SF
Rental Rate	Upon Request
Date Available	Now
Service Type	Full Service
Built Out As	Standard Office
Space Type	Relet
Space Use	Office
Lease Term	1 Years

Prime Executive Office Spaces Available in Clearfield, Utah!Are you looking for a professional and productive workspace? Look no further! Our executive office spaces are located in a fantastic location just minutes from Interstate 15, 93, and 89, ensuring easy access for your clients. • Location Highlights: • 938 S University Park Blvd, Clearfield, UT 84015 • Next to Weber State Davis Campus • Close to restaurants and Hill Air Force BaseOffice Features: • Fully Remodeled and Move-In Ready: Start working immediately in a modern, updated space. • Janitorial Services: Keep your workspace clean and professional. • High-Speed Internet: Stay connected and productive. • Flexible Lease Terms: Tailor your lease to fit your needs. • Networking Opportunities: Collaborate and expand your business with other tenants. • Professional Training Room: Access to a dedicated space for training sessions. • Electric Vehicle Charging Hookups: Convenient charging for your electric vehicles.Why Choose Our Executive Offices?: • Higher Productivity: A professional environment that boosts your efficiency. • Professional Look: Impress your clients with a polished office space. • Better Quality of Life: Stop long commutes to Salt Lake City and enjoy working closer to home.Special Offers: • Discounts for Leasing Multiple Offices: Save more when you lease multiple spaces. • Affordable Monthly Lease Rates: Ranging from \$675 to \$750 depending on office size.Don't miss this opportunity to elevate your business in a prime location! Contact us today to schedule a tour and secure your executive office space.Act Now! Spaces are filling up quickly. Secure your executive office today and take your business to the next level!

1st Floor Ste 7

Space Available	180 SF
Rental Rate	Upon Request
Date Available	Now
Service Type	Full Service
Built Out As	Standard Office
Space Type	Relet
Space Use	Office
Lease Term	1 Years

Prime Executive Office Spaces Available in Clearfield, Utah!Are you looking for a professional and productive workspace? Look no further! Our executive office spaces are located in a fantastic location just minutes from Interstate 15, 93, and 89, ensuring easy access for your clients. • Location Highlights: • 938 S University Park Blvd, Clearfield, UT 84015 • Next to Weber State Davis Campus • Close to restaurants and Hill Air Force BaseOffice Features: • Fully Remodeled and Move-In Ready: Start working immediately in a modern, updated space. • Janitorial Services: Keep your workspace clean and professional. • High-Speed Internet: Stay connected and productive. • Flexible Lease Terms: Tailor your lease to fit your needs. • Networking Opportunities: Collaborate and expand your business with other tenants. • Professional Training Room: Access to a dedicated space for training sessions. • Electric Vehicle Charging Hookups: Convenient charging for your electric vehicles.Why Choose Our Executive Offices?: • Higher Productivity: A professional environment that boosts your efficiency. • Professional Look: Impress your clients with a polished office space. • Better Quality of Life: Stop long commutes to Salt Lake City and enjoy working closer to home.Special Offers: • Discounts for Leasing Multiple Offices: Save more when you lease multiple spaces. • Affordable Monthly Lease Rates: Ranging from \$675 to \$750 depending on office size.Don't miss this opportunity to elevate your business in a prime location! Contact us today to schedule a tour and secure your executive office space.Act Now! Spaces are filling up quickly. Secure your executive office today and take your business to the next level!

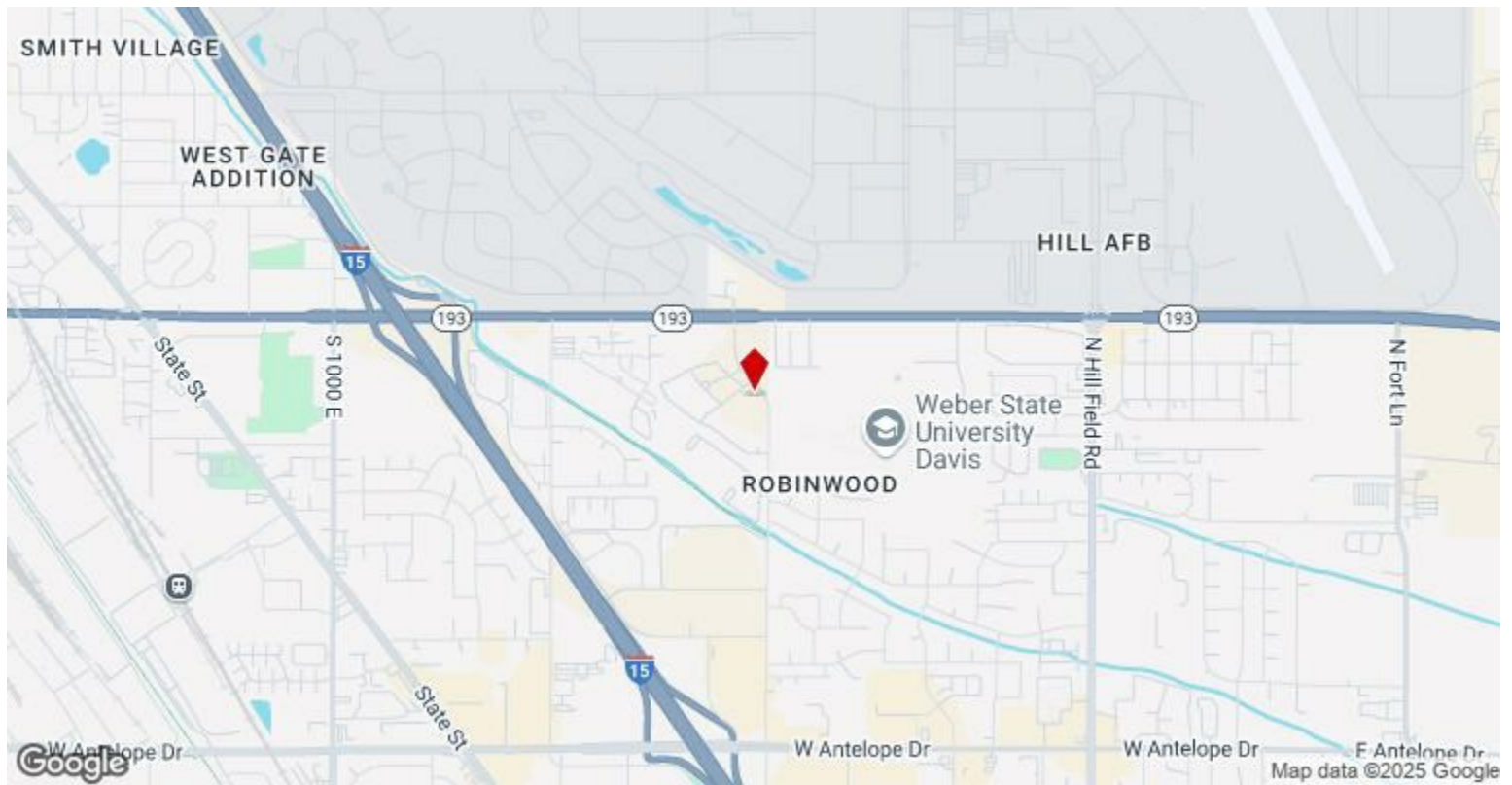
1st Floor Ste 8

Space Available	180 SF
Rental Rate	Upon Request
Date Available	Now
Service Type	Full Service
Built Out As	Standard Office
Space Type	Relet
Space Use	Office
Lease Term	1 Years

Prime Executive Office Spaces Available in Clearfield, Utah!Are you looking for a professional and productive workspace? Look no further! Our executive office spaces are located in a fantastic location just minutes from Interstate 15, 93, and 89, ensuring easy access for your clients. • Location Highlights: • 938 S University Park Blvd, Clearfield, UT 84015 • Next to Weber State Davis Campus • Close to restaurants and Hill Air Force BaseOffice Features: • Fully Remodeled and Move-In Ready: Start working immediately in a modern, updated space. • Janitorial Services: Keep your workspace clean and professional. • High-Speed Internet: Stay connected and productive. • Flexible Lease Terms: Tailor your lease to fit your needs. • Networking Opportunities: Collaborate and expand your business with other tenants. • Professional Training Room: Access to a dedicated space for training sessions. • Electric Vehicle Charging Hookups: Convenient charging for your electric vehicles.Why Choose Our Executive Offices?: • Higher Productivity: A professional environment that boosts your efficiency. • Professional Look: Impress your clients with a polished office space. • Better Quality of Life: Stop long commutes to Salt Lake City and enjoy working closer to home.Special Offers: • Discounts for Leasing Multiple Offices: Save more when you lease multiple spaces. • Affordable Monthly Lease Rates: Ranging from \$675 to \$750 depending on office size.Don't miss this opportunity to elevate your business in a prime location! Contact us today to schedule a tour and secure your executive office space.Act Now! Spaces are filling up quickly. Secure your executive office today and take your business to the next level!

Major Tenant Information

Tenant	SF Occupied	Lease Expired
Guild Mortgage	-	
Oral & Facial Surgery Center	-	November 2017
Richards Brown PC	-	
Stantec	-	



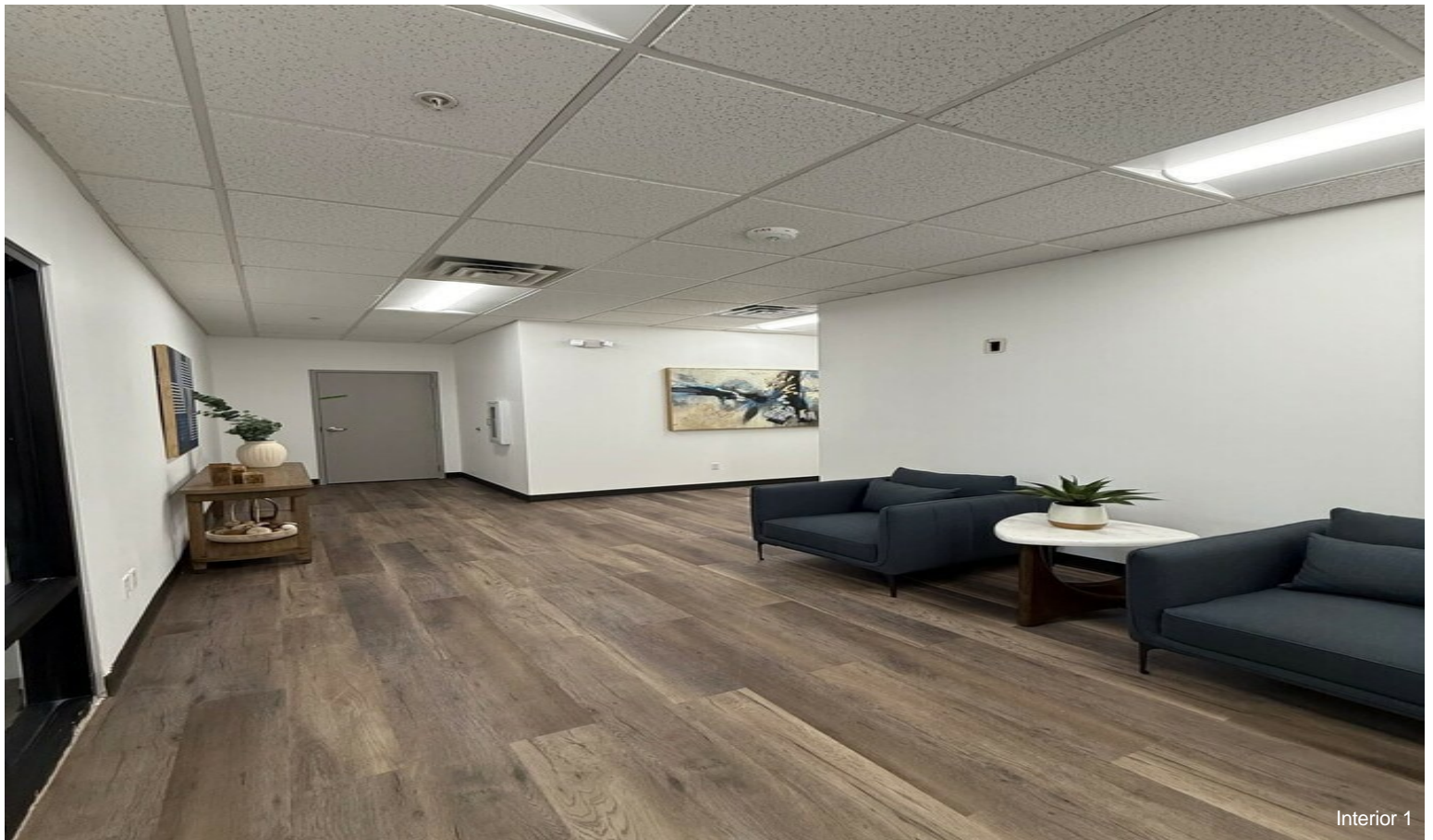
938 University Park Blvd, Clearfield, UT 84015

- Fully Remodeled and Move-In Ready: Start working immediately in a modern, updated space.
- Janitorial Services: Keep your workspace clean and professional.
- High-Speed Internet: Stay connected and productive.
- Flexible Lease Terms: Tailor your lease to fit your needs.
- Networking Opportunities: Collaborate and expand your business with other tenants.
- Professional Training Room: Access to a dedicated space for training sessions.
- Electric Vehicle Charging Hookups: Convenient charging for your electric vehicles.

Property Photos



Interior



Interior 1

Property Photos



Building Photo



Interior 2

Property Photos



Interior 4



Interior 5

Property Photos



Property Photos

