

# Baldwin East

## Medical/ Professional Office

**EquityPartners**  
we provide Office Space

**Summer Promotion – Up to 5 Months Free  
Call about our Broker Incentives!**



## PROPERTY HIGHLIGHTS:

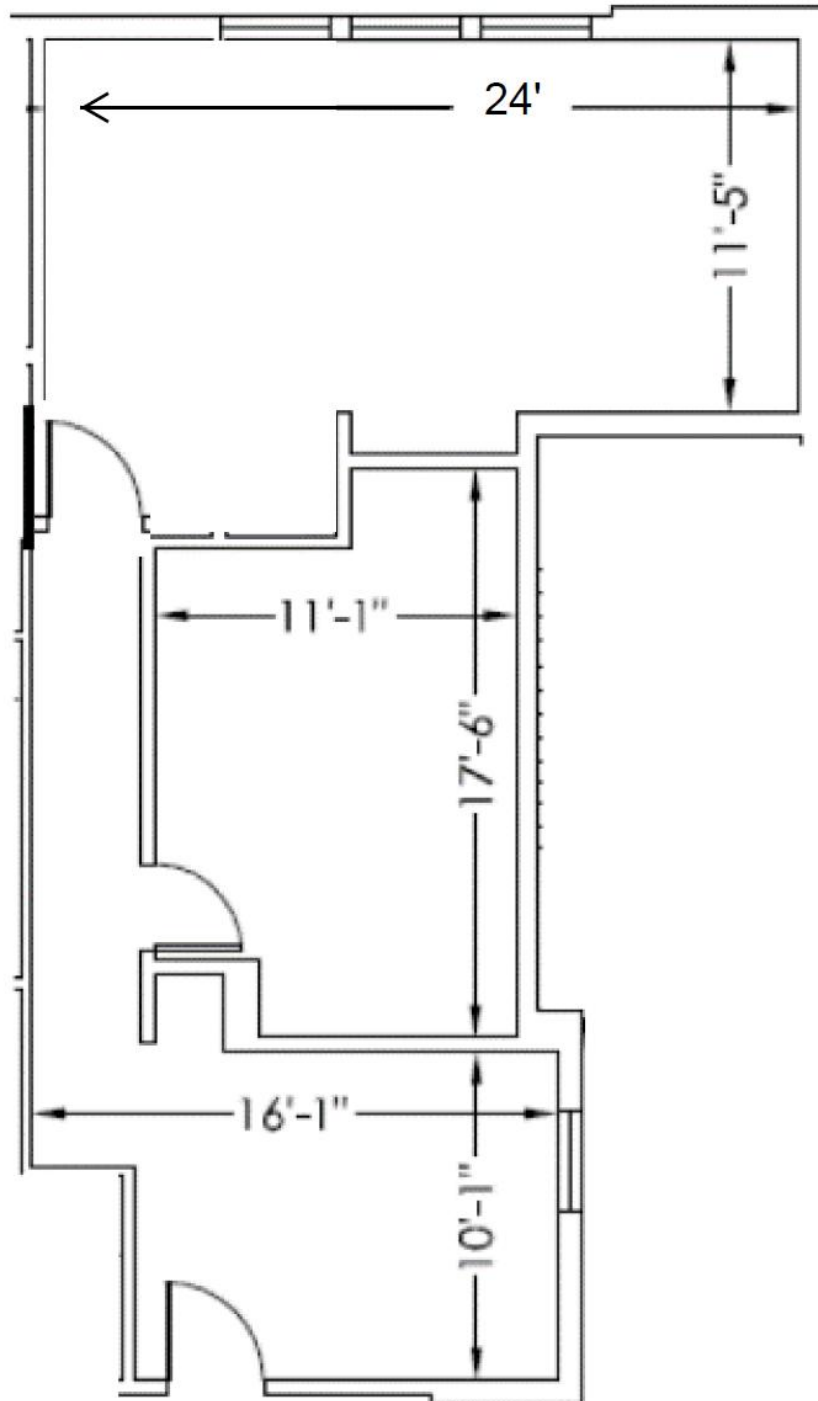
- 1320 North Semoran Blvd. Suite 101 Orlando, FL 32807
- 814 Rentable Square Feet – Available September
- Semoran Blvd. Monument Signage Available (Approx. 50,000 cars/day)
- Ample Parking Available
- Ideal for independent contractor, attorney, accountant, etc.
- Excellent Access, adjacent SR 408, SR 417 and SR 50
- Close proximity to Orlando International Airport and Downtown Orlando
- Full Service Lease, Janitorial Included
- Professionally Managed & Onsite Ownership

For additional information, please contact:

O: 407.660.4949

[Leasing@equitypartners.net](mailto:Leasing@equitypartners.net)

Kristen Fess  
Michael G. Fess  
Faith Pamplin  
Mike Fess



For additional information, please contact:

O: 407.660.4949

[Leasing@equitypartners.net](mailto:Leasing@equitypartners.net)

Kristen Fess

Michael G. Fess

Faith Pamplin

Mike Fess