

# MEMORIAL MEDICAL

100 East 33rd Street | Vancouver, WA



For leasing information contact:

**LAEL CROMPTON, Senior Director, Leasing**

310.293.2231 | [LCrompton@pmbres.com](mailto:LCrompton@pmbres.com) | CA Lic. 01871298

[PMBRES.COM](http://PMBRES.COM)

# PROPERTY HIGHLIGHTS

## MEMORIAL MEDICAL

100 East 33rd Street | Vancouver, WA 98660

- 2,818 SF move-in ready spec suite to be delivered 4Q-2026
- Brand new development planned next door for future in-patient rehab facility
- Ample surface parking for patient and staff
- Easy access to freeways and public transportation lines
- Conveniently located in downtown Vancouver - 1.9 miles to Vancouver Waterfront
- Active management team with dedicated maintenance staff



For leasing information contact:

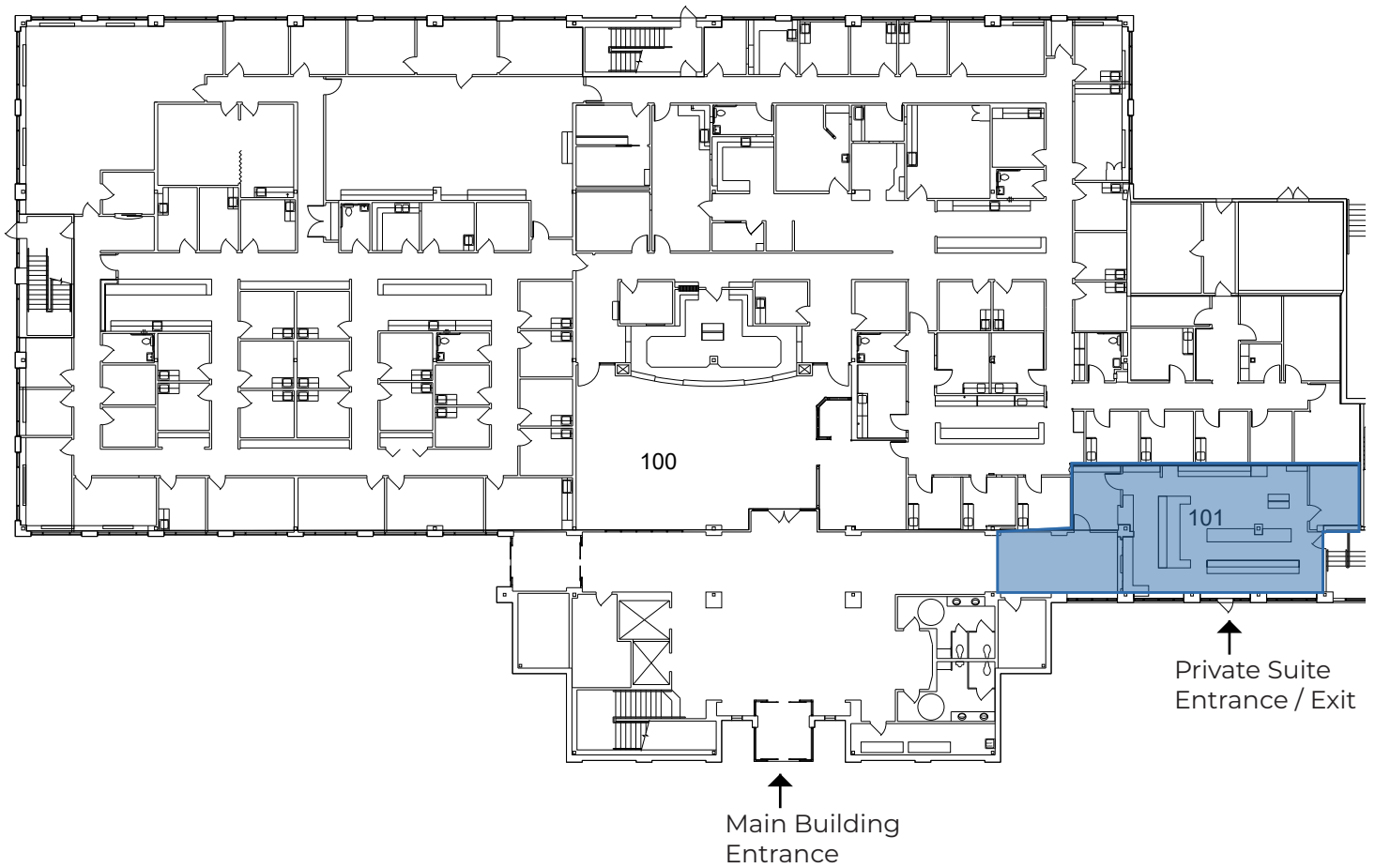
**LAEL CROMPTON, Senior Director, Leasing**

310.293.2231 | [LCrompton@pmbres.com](mailto:LCrompton@pmbres.com) | CA Lic. 01871298

[PMBRES.COM](http://PMBRES.COM)

# AVAILABLE SPACE

**1<sup>ST</sup> FLOOR**  
**SUITE 101: ± 1,938 RSF**



For leasing information contact:

**LAEL CROMPTON, Senior Director, Leasing**

310.293.2231 | LCrompton@pmbres.com | CA Lic. 01871298

# AVAILABLE SPACE

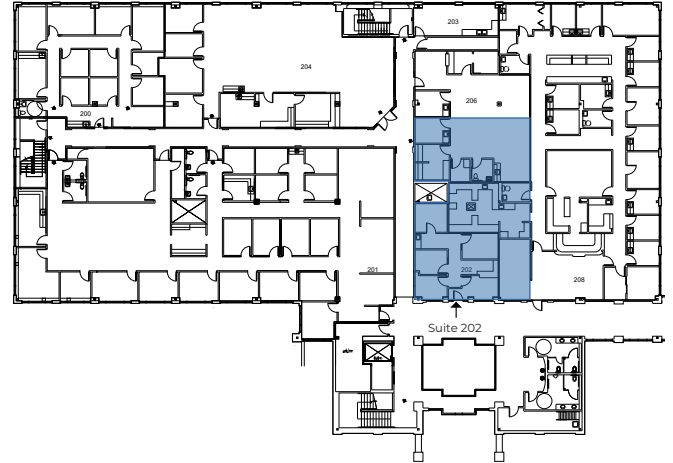
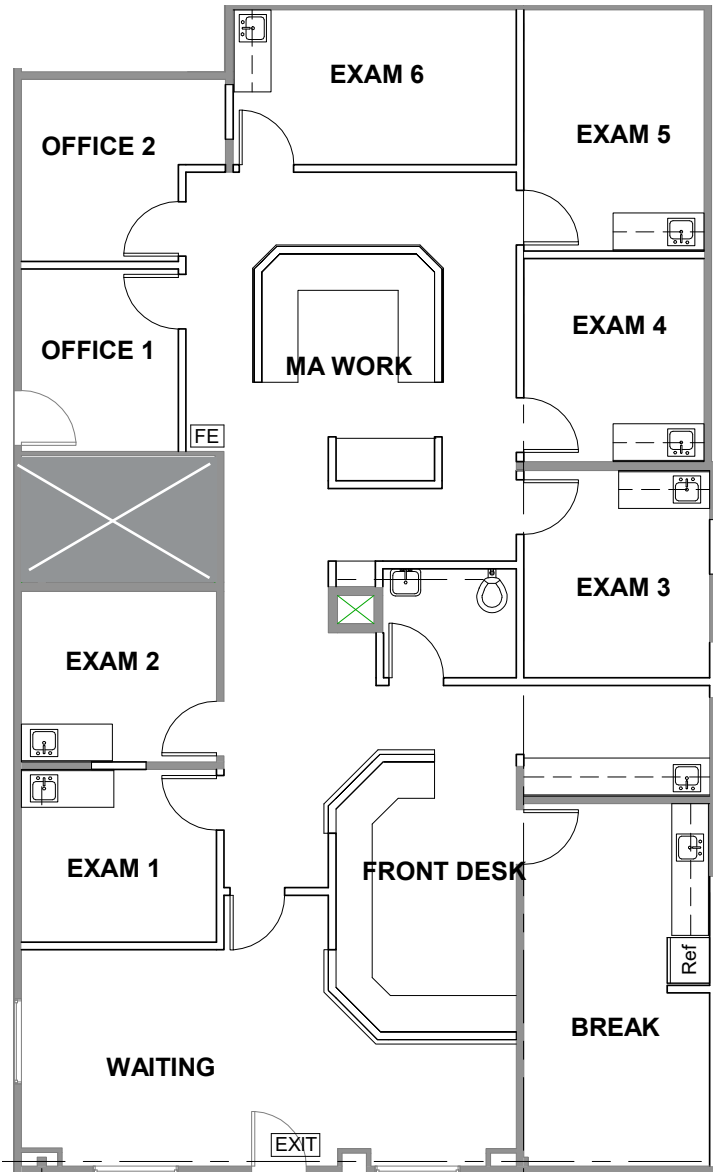
## 2<sup>ND</sup> FLOOR

### PROPOSED SPEC SUITE

**SUITE 202: ± 2,819 RSF**

*Estimated Completion : 4Q-2026*

*Can be further expanded up to ± 5,636 RSF*



For leasing information contact:

**LAEL CROMPTON, Senior Director, Leasing**

310.293.2231 | LCrompton@pmbres.com | CA Lic. 01871298

# AVAILABLE SPACE

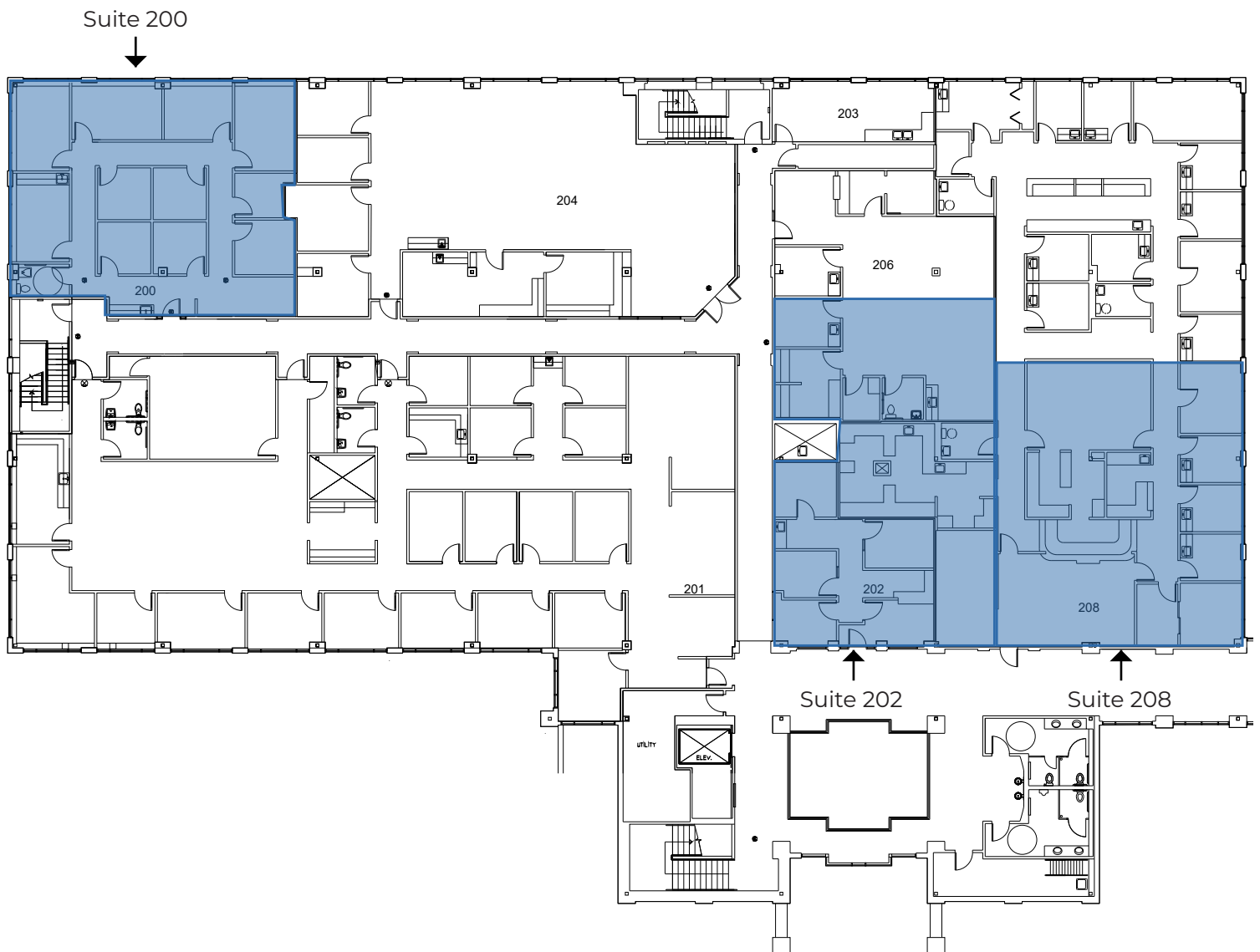
## 2<sup>ND</sup> FLOOR

**SUITE 200:** ± 2,357 RSF

**\*SUITE 202:** ± 2,819 RSF

**\*SUITE 208:** ± 2,817 RSF

*\*Contiguous to ± 5,636 RSF*



For leasing information contact:

**LAEL CROMPTON, Senior Director, Leasing**

310.293.2231 | LCrompton@pmbres.com | CA Lic. 01871298